



329 B EAST OXFORD ST.
 PONTOTOC, MS 38863
 662-200-2564 FAX 662-200-2587

www.flagstarconstruction.com


Transmittal

To: Dale Bailey an Association Date: 0822/2022
 One Jackson Place 250, 188 East Capital Street Attn: Paul Purser, Architect, AIA, NCARB,
 Jackson, MS 39201 LEED AP BD+C

Re: SUBMITTAL 038 CC:
 PN: 21064, Pontotoc City Schools ESSER 2&3

WE ARE SENDING YOU ATTACHED:

Shop Drawings Prints/Plans Specifications Copy of Letter Samples Other:

COPIES	SECTION	DESCRIPTION
1	Division 05	Jr. High School ADA Ramp Hand Rails
		Handrail Shop Drawings
<div style="border: 1px solid black; padding: 5px;"> <input type="checkbox"/> Reviewed <input checked="" type="checkbox"/> Reviewed As Noted <input type="checkbox"/> Reviewed, Not Approved <input type="checkbox"/> Revise & Resubmit Reviewed for the limited purpose of checking for conformance with information given and the design concept expressed in the Contract Documents. This review was not conducted for the purpose of determining the accuracy and completeness of other quantities or for substantiating instructions for installation, assembly, performance of materials, equipment, systems, or construction means and methods - all of which remain the responsibility of the Contractor. Dale Partners Architects, P.A. By:  Date: 8/24/22 </div>		

THESE ARE TRANSMITTED FOR THE FOLLOWING ACTION:

- For Approval For Your Use As Requested For Review For Bid Due:
 Approved as Submitted Approved as Noted Returned for Corrections/Resubmittals
 Resubmit copies for approval Return corrected sets

Remarks:

From: Mike Parker

Received by: _____

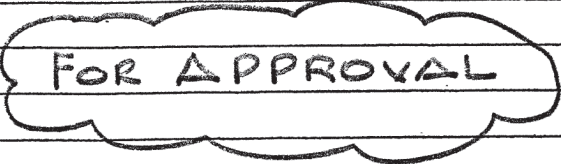
PAUL BOX
196 STRONG ROAD
CANTON, MS 39046

LETTER OF TRANSMITTAL

DATE	8-22-22	JOB NO.	9036
ATTENTION	MIKE		
REF.			
PONTOTOC CITY SCHOOLS			
UPPER SITE RAMP			

TO STEELWORKS LLC
5217 GREENWAY DR. EXT.
JACKSON, MS. 39204

WE ARE SENDING YOU ATTACHED UNDER SEPARATE COVER VIA E-MAIL THE FOLLOWING ITEMS:
 SHOP DRAWINGS PRINTS PLANS SAMPLES CHANGE ORDER
 COPY OF LETTER ORIGINALS INVOICE ENCLOSED _____

QTY	ORIG/COPY	DESCRIPTION
1		E5, E6, 14 THRU 24.
		

THESE ARE TRANSMITTED AS CHECKED BELOW:

- | | | |
|--|---|---|
| <input checked="" type="checkbox"/> FOR APPROVAL (1ST) | <input type="checkbox"/> REVISED DRAWINGS | <input type="checkbox"/> FOR REVIEW AND COMMENT |
| <input type="checkbox"/> FOR APPROVAL (2ND) | <input type="checkbox"/> AS REQUESTED | <input type="checkbox"/> RETURNED FOR CORRECTIONS |
| <input type="checkbox"/> READY FOR SHOP | <input type="checkbox"/> FOR YOUR USE | <input type="checkbox"/> BID SET |
| <input type="checkbox"/> FILE & FIELD DRAWINGS | <input type="checkbox"/> _____ | |

REMARKS E-MAIL THIS DATE TO:

PAUL BOX DETAILING @ COMCAST. NET
MIKE @ STEELWORKS LLC. COM

COPY TO _____

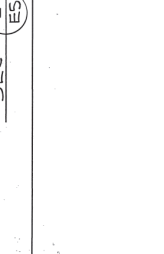
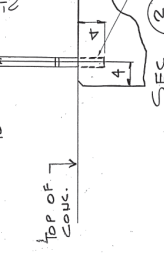
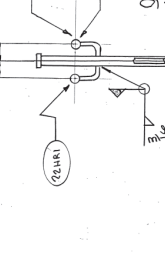
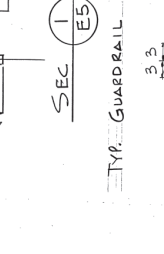
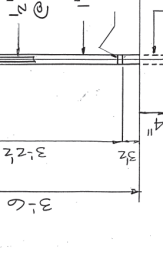
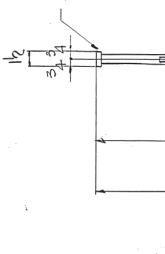
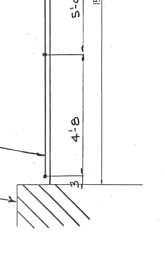
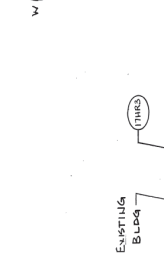
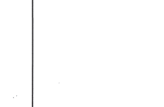
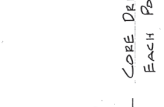
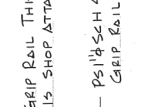
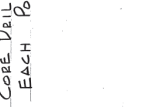
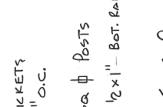
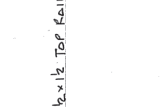
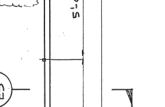
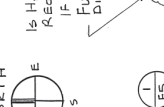
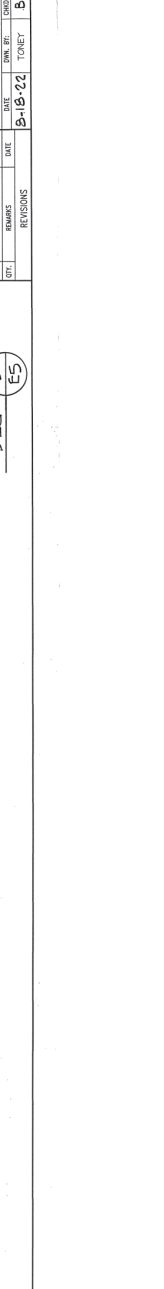
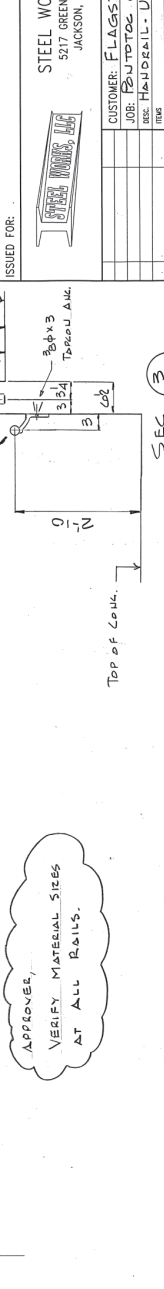
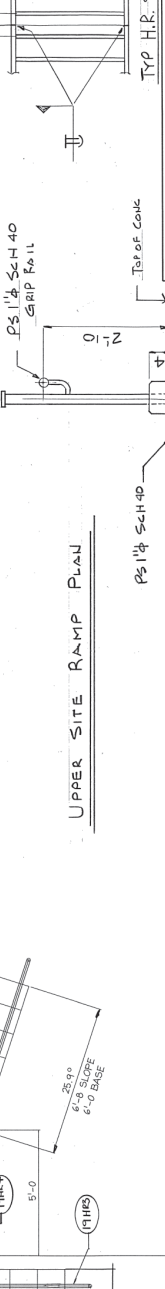
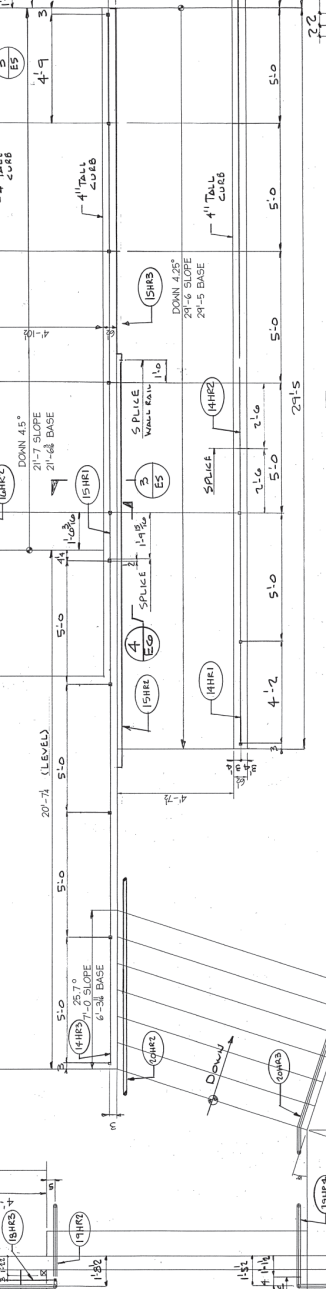
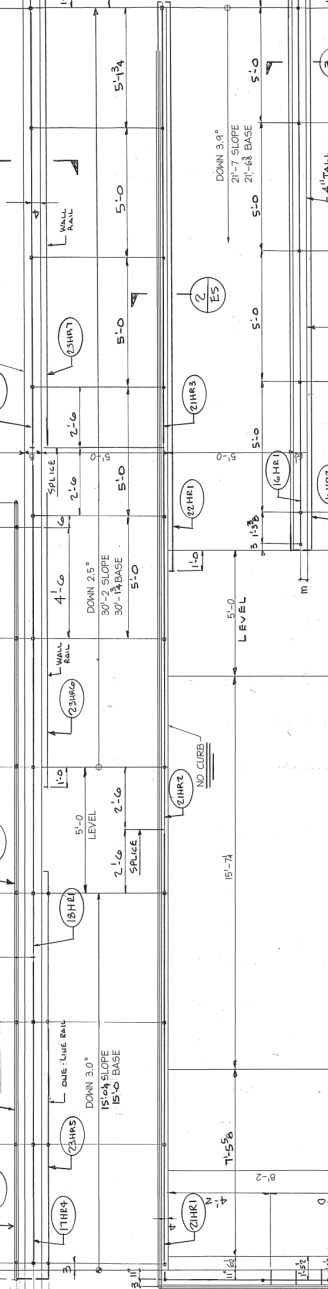
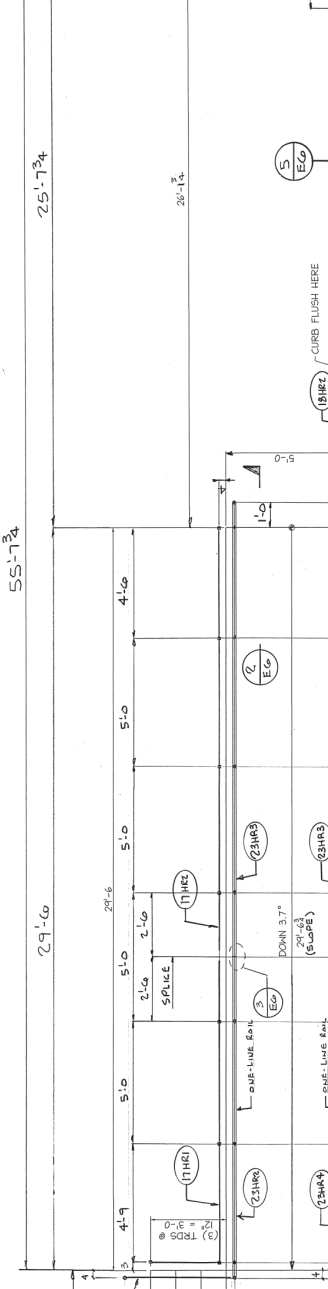
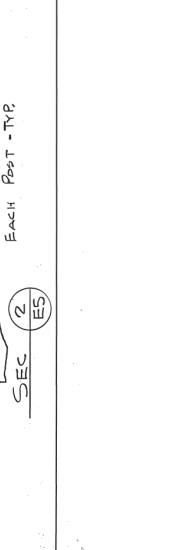
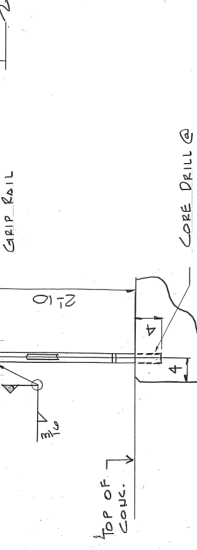
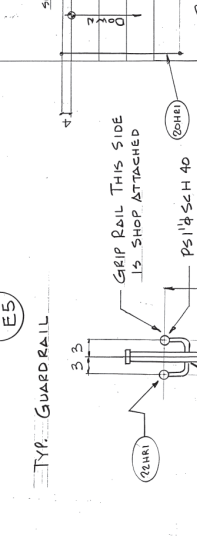
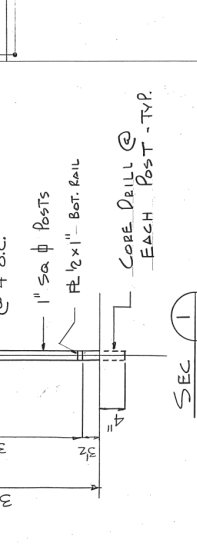
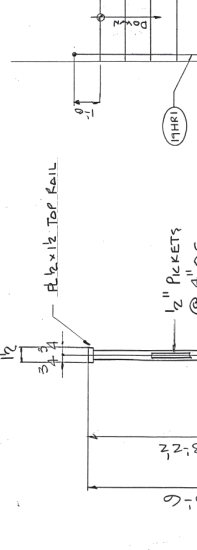
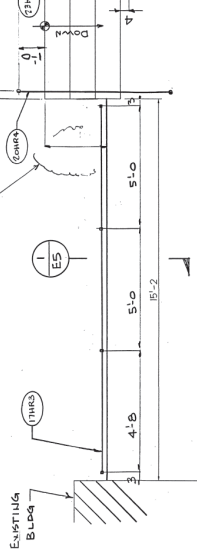
SIGNED _____

PAUL BOX

NORTH



IS H.R. READ HERE IF SO FURNISH DIM.



APPROVE, VERIFY MATERIAL SIZES AT ALL RAILS.

UPPER SITE RAMP PLAN

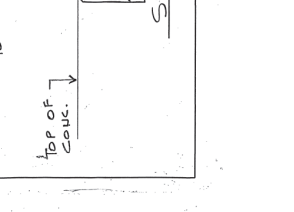
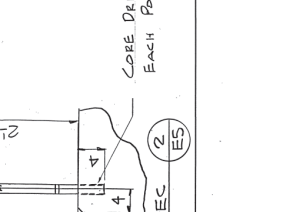
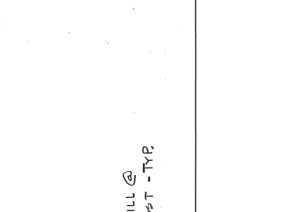
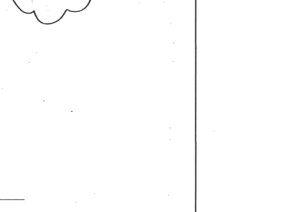
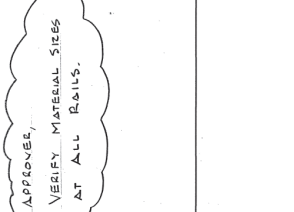
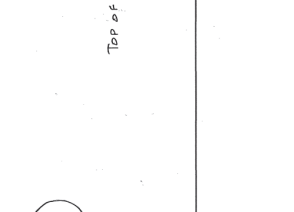
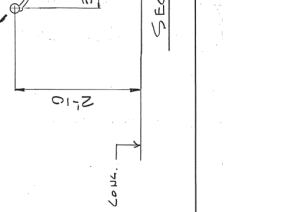
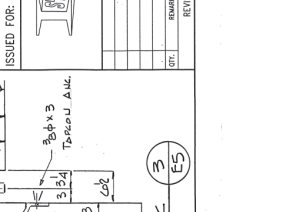
DATE	
REVISIONS	
REV.	DESCRIPTION
1	
2	
3	
4	
5	
6	
7	
8	
9	
10	
11	
12	
13	
14	
15	
16	
17	
18	
19	
20	

ISSUED FOR:

STEEL WORKS, L.L.C.
5217 GREENWAY DRIVE
JACKSON, MS 39242

CUSTOMER: FLAGSTAR CONST.
JOB: BENTON CITY SCHOOLS
DESC: HANDRAIL - UPPER SITE RAMP

DATE: 08/13/2013
DRAWN BY: J.B. BROWN
CHECKED BY: J.B. BROWN
DATE: 08/13/2013
SCALE: AS SHOWN
JOB NO: 10336
TOWER: B-18-20
REVISED BY: J.B. BROWN



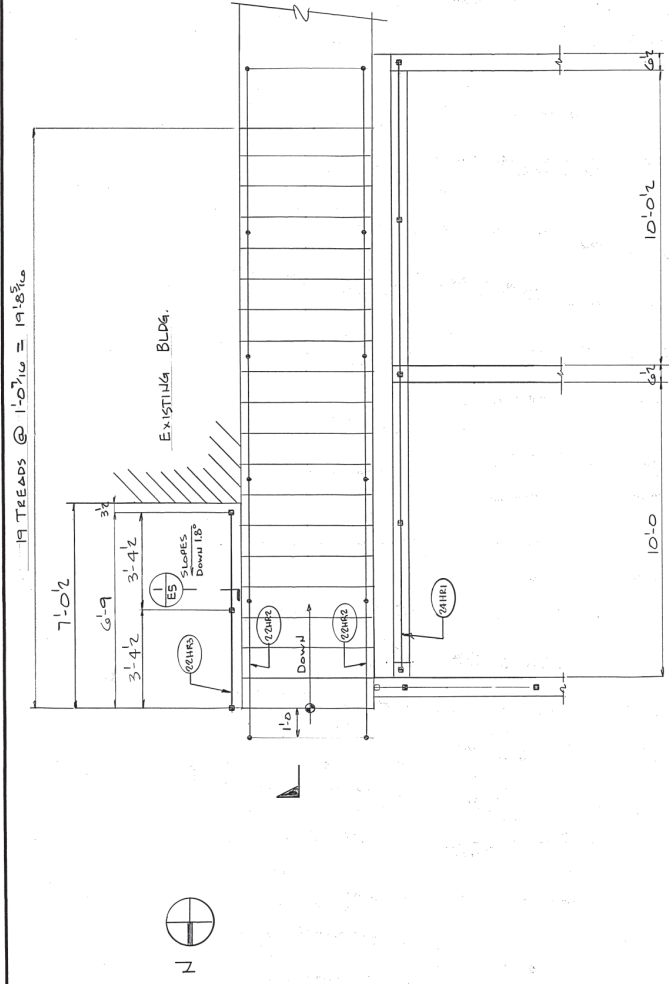
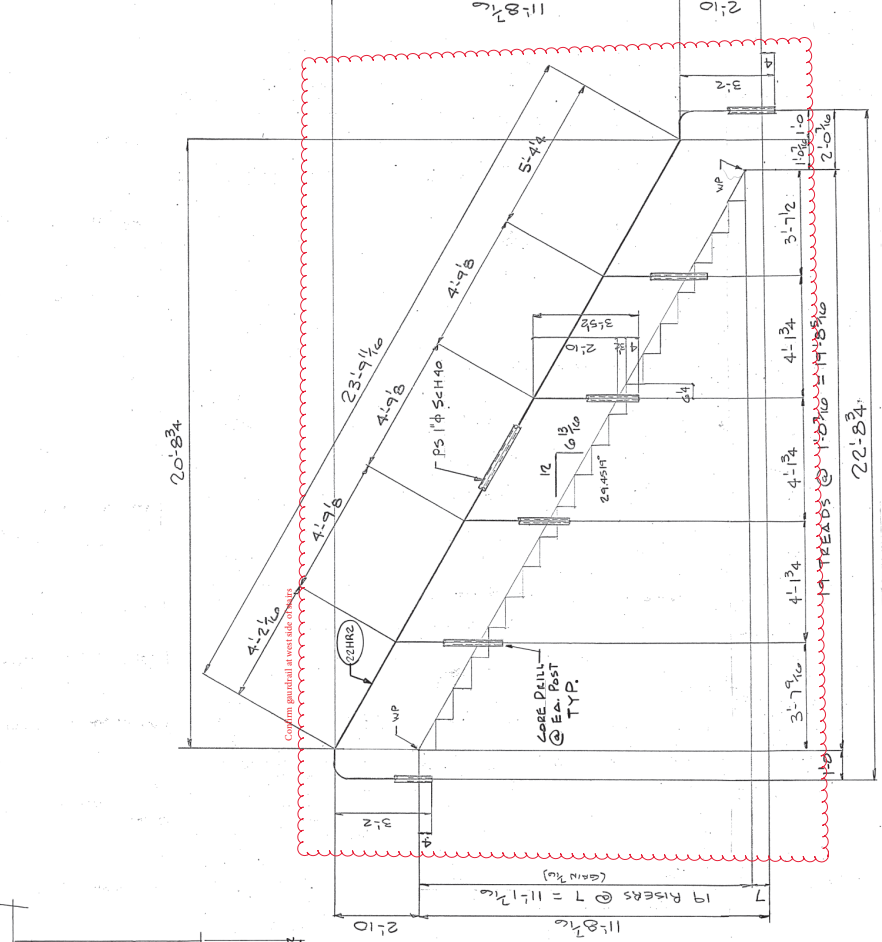
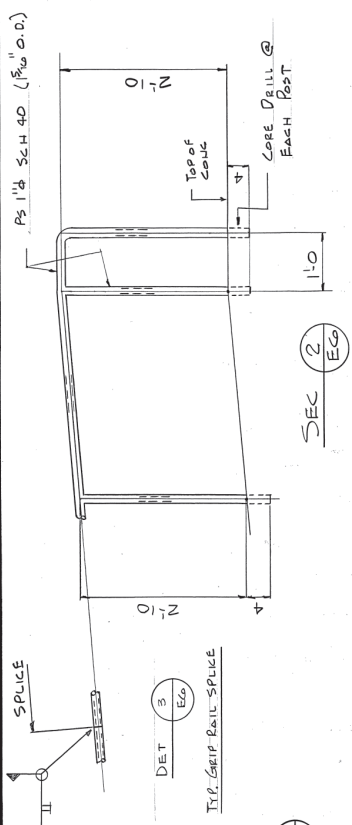


JOB NO. 9036
DRAWING NO. EGO

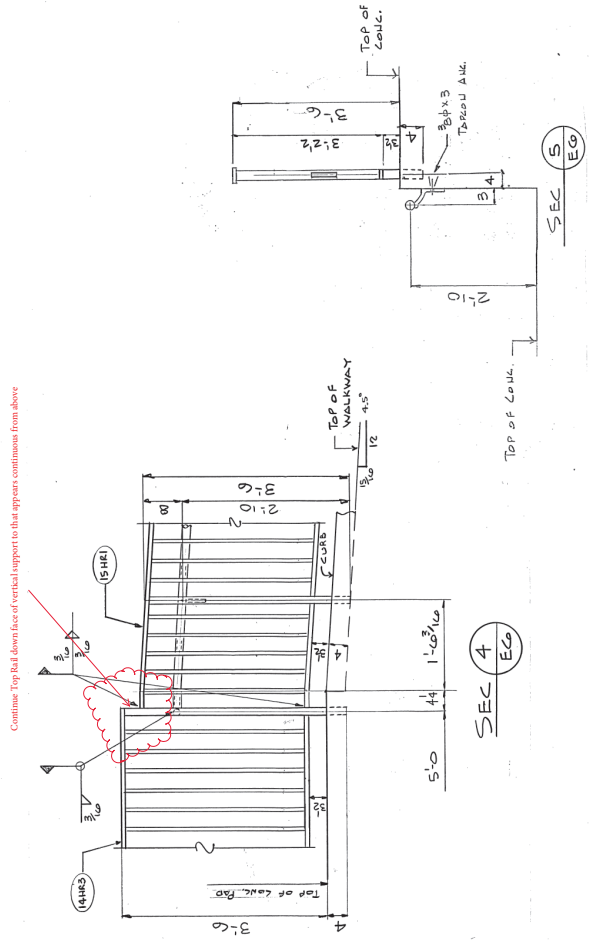
PROJECT: POUTOOC CITY SCHOOLS
LOCATION: POUTOOC, MS
MATERIAL FOR: HANDRAIL UPPER-SITE RAMP & STAIRS
DRAWN BY: DOX
CHECKED BY: D. TONEY

CONTRACTOR: FLAGSTAR CONST.
ARCHITECT: DALE BAILEY - BA ASSOC.
REVISIONS

NOTE - IMPORTANT - NOTE
WE WILL NOT ACCEPT BACK CHARGES FOR LABOR, MATERIALS, OR CORRECTIVE WORK UNLESS AUTHORIZED IN WRITING BY OUR OFFICE



PARTIAL PLAN @ EAST STAIR



SEC 4 EGO

SEC 5 EGO

SEC 1 EGO

SEC 2 EGO

SEC 3 EGO

SEC 4 EGO

SEC 5 EGO

SEC 6 EGO

SEC 7 EGO

SEC 8 EGO

SEC 9 EGO

SEC 10 EGO

SEC 11 EGO

SEC 12 EGO

SEC 13 EGO

SEC 14 EGO

SEC 15 EGO

SEC 16 EGO

SEC 17 EGO

SEC 18 EGO

SEC 19 EGO

SEC 20 EGO

SEC 21 EGO

SEC 22 EGO

SEC 23 EGO

SEC 24 EGO

SEC 25 EGO

SEC 26 EGO

SEC 27 EGO

SEC 28 EGO

SEC 29 EGO

SEC 30 EGO

SEC 31 EGO

SEC 32 EGO

SEC 33 EGO

SEC 34 EGO

SEC 35 EGO

SEC 36 EGO

SEC 37 EGO

SEC 38 EGO

SEC 39 EGO

SEC 40 EGO

SEC 41 EGO

SEC 42 EGO

SEC 43 EGO

SEC 44 EGO

SEC 45 EGO

SEC 46 EGO

SEC 47 EGO

SEC 48 EGO

SEC 49 EGO

SEC 50 EGO

SEC 51 EGO

SEC 52 EGO

SEC 53 EGO

SEC 54 EGO

SEC 55 EGO

SEC 56 EGO

SEC 57 EGO

SEC 58 EGO

SEC 59 EGO

SEC 60 EGO

SEC 61 EGO

SEC 62 EGO

SEC 63 EGO

SEC 64 EGO

SEC 65 EGO

SEC 66 EGO

SEC 67 EGO

SEC 68 EGO

SEC 69 EGO

SEC 70 EGO

SEC 71 EGO

SEC 72 EGO

SEC 73 EGO

SEC 74 EGO

SEC 75 EGO

SEC 76 EGO

SEC 77 EGO

SEC 78 EGO

SEC 79 EGO

SEC 80 EGO

SEC 81 EGO

SEC 82 EGO

SEC 83 EGO

SEC 84 EGO

SEC 85 EGO

SEC 86 EGO

SEC 87 EGO

SEC 88 EGO

SEC 89 EGO

SEC 90 EGO

SEC 91 EGO

SEC 92 EGO

SEC 93 EGO

SEC 94 EGO

SEC 95 EGO

SEC 96 EGO

SEC 97 EGO

SEC 98 EGO

SEC 99 EGO

SEC 100 EGO

SHOP BILL

NO.	DESCRIPTION	ASSEMBLY	LENGTH FT. IN.	MARK	SHIPPING MARK	REMARKS	WEIGHT
1	HANDRAIL	M14	12 1/2	M14	14HR1		
2	"	M14	11	M14			
3	"	M14	90	M14			
4	"	M14	10	M14			
5	"	M14	12 1/2	M14			
6	"	M14	12 1/2	M14			
7	"	M14	12 1/2	M14			
8	"	M14	12 1/2	M14			
9	"	M14	12 1/2	M14			
10	"	M14	12 1/2	M14			
11	"	M14	12 1/2	M14			
12	"	M14	12 1/2	M14			
13	"	M14	12 1/2	M14			
14	"	M14	12 1/2	M14			
15	"	M14	12 1/2	M14			
16	"	M14	12 1/2	M14			
17	"	M14	12 1/2	M14			
18	"	M14	12 1/2	M14			
19	"	M14	12 1/2	M14			
20	"	M14	12 1/2	M14			
21	"	M14	12 1/2	M14			
22	"	M14	12 1/2	M14			
23	"	M14	12 1/2	M14			
24	"	M14	12 1/2	M14			
25	"	M14	12 1/2	M14			
26	"	M14	12 1/2	M14			
27	"	M14	12 1/2	M14			
28	"	M14	12 1/2	M14			
29	"	M14	12 1/2	M14			
30	"	M14	12 1/2	M14			
31	"	M14	12 1/2	M14			
32	"	M14	12 1/2	M14			
33	"	M14	12 1/2	M14			
34	"	M14	12 1/2	M14			
35	"	M14	12 1/2	M14			
36	"	M14	12 1/2	M14			
37	"	M14	12 1/2	M14			
38	"	M14	12 1/2	M14			
39	"	M14	12 1/2	M14			
40	"	M14	12 1/2	M14			
41	"	M14	12 1/2	M14			
42	"	M14	12 1/2	M14			
43	"	M14	12 1/2	M14			
44	"	M14	12 1/2	M14			
45	"	M14	12 1/2	M14			
46	"	M14	12 1/2	M14			
47	"	M14	12 1/2	M14			
48	"	M14	12 1/2	M14			
49	"	M14	12 1/2	M14			
50	"	M14	12 1/2	M14			
51	"	M14	12 1/2	M14			
52	"	M14	12 1/2	M14			
53	"	M14	12 1/2	M14			
54	"	M14	12 1/2	M14			
55	"	M14	12 1/2	M14			
56	"	M14	12 1/2	M14			
57	"	M14	12 1/2	M14			
58	"	M14	12 1/2	M14			
59	"	M14	12 1/2	M14			
60	"	M14	12 1/2	M14			
61	"	M14	12 1/2	M14			
62	"	M14	12 1/2	M14			
63	"	M14	12 1/2	M14			
64	"	M14	12 1/2	M14			
65	"	M14	12 1/2	M14			
66	"	M14	12 1/2	M14			
67	"	M14	12 1/2	M14			
68	"	M14	12 1/2	M14			
69	"	M14	12 1/2	M14			
70	"	M14	12 1/2	M14			
71	"	M14	12 1/2	M14			
72	"	M14	12 1/2	M14			
73	"	M14	12 1/2	M14			
74	"	M14	12 1/2	M14			
75	"	M14	12 1/2	M14			
76	"	M14	12 1/2	M14			
77	"	M14	12 1/2	M14			
78	"	M14	12 1/2	M14			
79	"	M14	12 1/2	M14			
80	"	M14	12 1/2	M14			
81	"	M14	12 1/2	M14			
82	"	M14	12 1/2	M14			
83	"	M14	12 1/2	M14			
84	"	M14	12 1/2	M14			
85	"	M14	12 1/2	M14			
86	"	M14	12 1/2	M14			
87	"	M14	12 1/2	M14			
88	"	M14	12 1/2	M14			
89	"	M14	12 1/2	M14			
90	"	M14	12 1/2	M14			
91	"	M14	12 1/2	M14			
92	"	M14	12 1/2	M14			
93	"	M14	12 1/2	M14			
94	"	M14	12 1/2	M14			
95	"	M14	12 1/2	M14			
96	"	M14	12 1/2	M14			
97	"	M14	12 1/2	M14			
98	"	M14	12 1/2	M14			
99	"	M14	12 1/2	M14			
100	"	M14	12 1/2	M14			

REVISIONS

NO.	DATE	DESCRIPTION

FIELD NOTES

DATE: 8/22
 BY: [Signature]
 CHECKED: D.T.
 DATE: 8/22

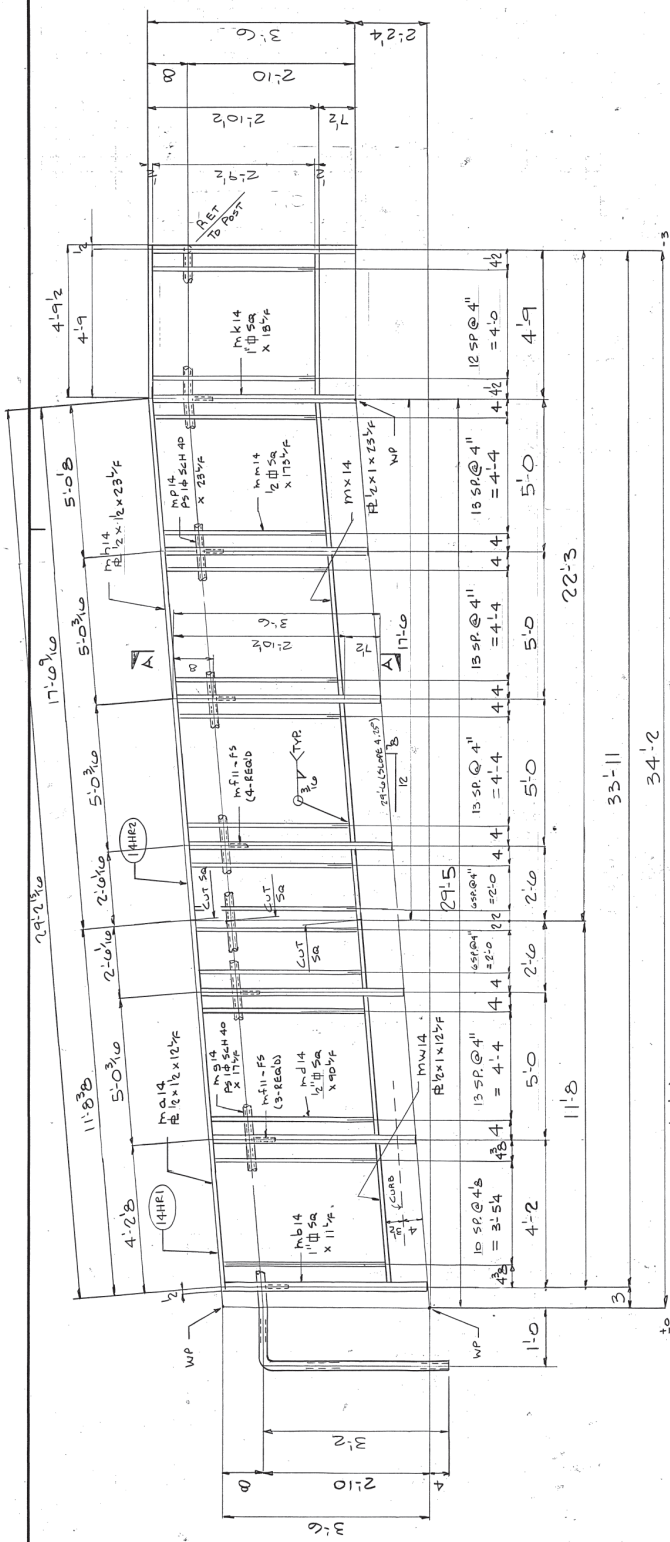
PROJECT: STRUCTURAL & MISCELLANEOUS ERECTION
CUSTOMER: FLAGSTAR CONST.
PROJECT: HANDBAIL - UPPER SITE RAMP
DATE: 8/22
CHECKED: D.T.
DATE: 8/22

MATERIALS:
 PRIMER: [Blank]
 PAINT: [Blank]

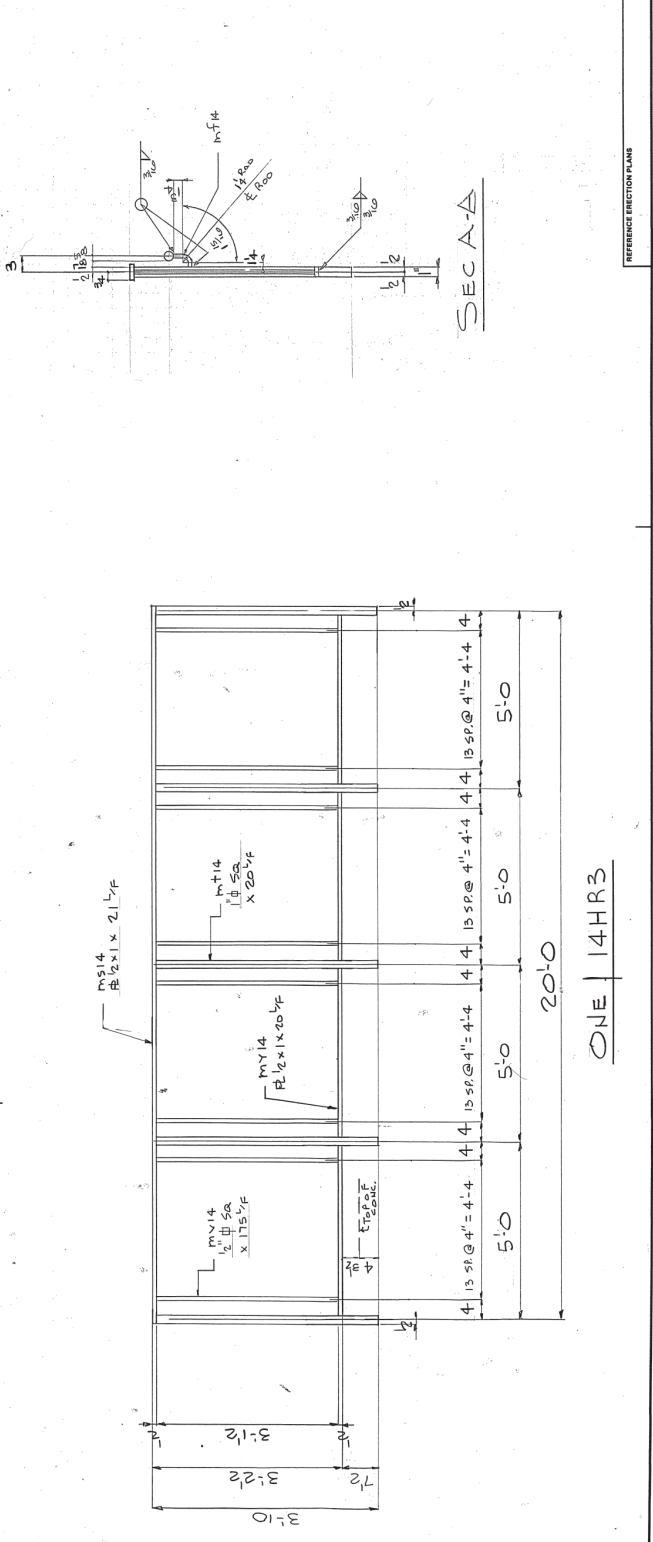
SHOP ORDER: 9030

SHEET: 14

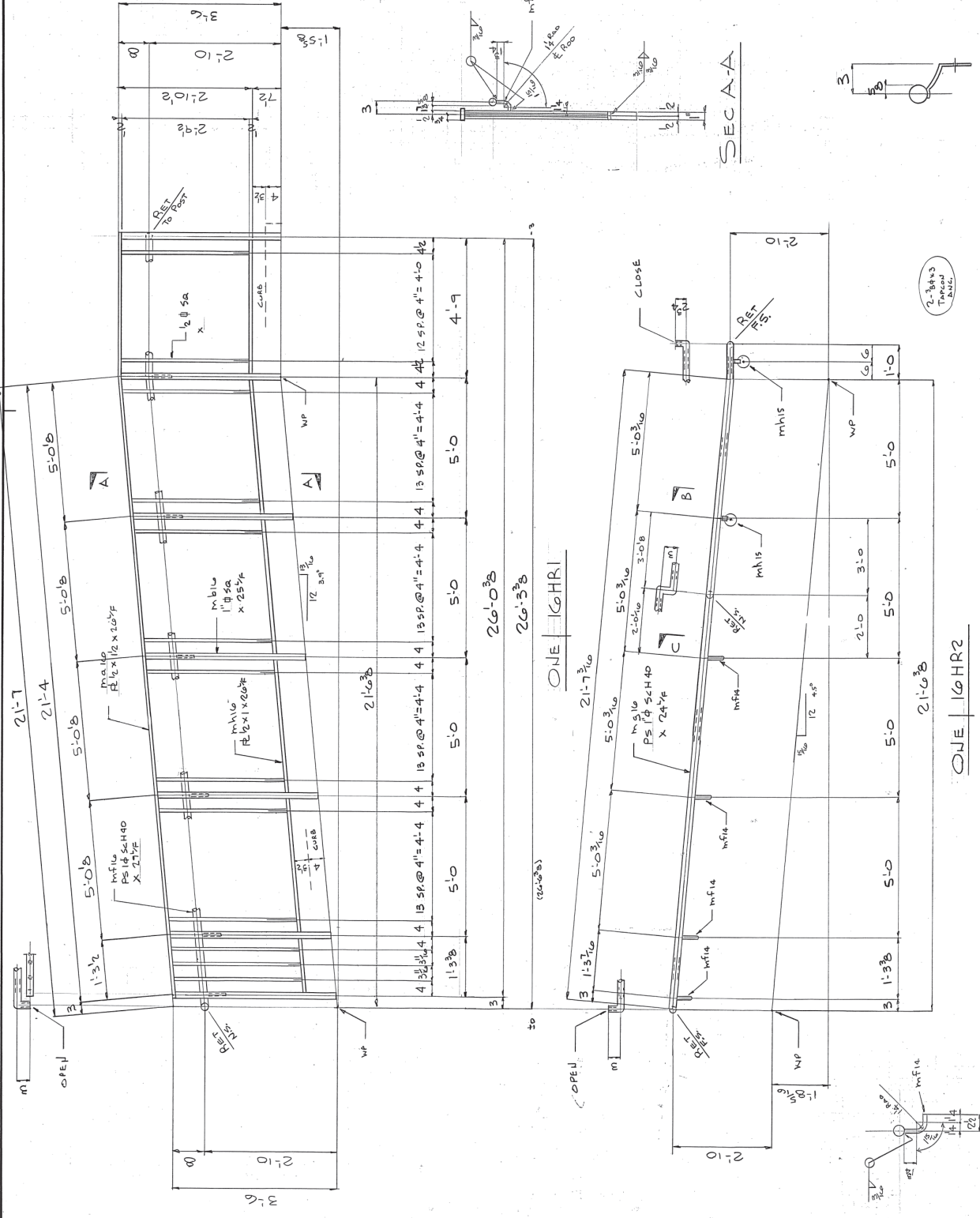
REFERENCE ERECTION PLANS: ONE 14HR1



ONE 14HR1



ONE 14HR3



NO.	DESCRIPTION	ASSEM.	LENGTH	MARK	SHIPPING	REMARKS	WEIGHT
			FT. IN.		MARK		
1	HANDRAIL		21		16HR1		
1	1/2" x 1/2"		25		m.f.10		
1	1/2" x 1/2"		25		m.f.11		
1	1/2" x 1/2"		25		m.f.12		
1	1/2" x 1/2"		25		m.f.13		
1	1/2" x 1/2"		25		m.f.14		
1	1/2" x 1/2"		25		m.f.15		
1	1/2" x 1/2"		25		m.f.16		
1	1/2" x 1/2"		25		m.f.17		
1	1/2" x 1/2"		25		m.f.18		
1	1/2" x 1/2"		25		m.f.19		
1	1/2" x 1/2"		25		m.f.20		
1	1/2" x 1/2"		25		m.f.21		
1	1/2" x 1/2"		25		m.f.22		
1	1/2" x 1/2"		25		m.f.23		
1	1/2" x 1/2"		25		m.f.24		
1	1/2" x 1/2"		25		m.f.25		
1	1/2" x 1/2"		25		m.f.26		
1	1/2" x 1/2"		25		m.f.27		
1	1/2" x 1/2"		25		m.f.28		
1	1/2" x 1/2"		25		m.f.29		
1	1/2" x 1/2"		25		m.f.30		
1	1/2" x 1/2"		25		m.f.31		
1	1/2" x 1/2"		25		m.f.32		
1	1/2" x 1/2"		25		m.f.33		
1	1/2" x 1/2"		25		m.f.34		
1	1/2" x 1/2"		25		m.f.35		
1	1/2" x 1/2"		25		m.f.36		
1	1/2" x 1/2"		25		m.f.37		
1	1/2" x 1/2"		25		m.f.38		
1	1/2" x 1/2"		25		m.f.39		
1	1/2" x 1/2"		25		m.f.40		
1	1/2" x 1/2"		25		m.f.41		
1	1/2" x 1/2"		25		m.f.42		
1	1/2" x 1/2"		25		m.f.43		
1	1/2" x 1/2"		25		m.f.44		
1	1/2" x 1/2"		25		m.f.45		
1	1/2" x 1/2"		25		m.f.46		
1	1/2" x 1/2"		25		m.f.47		
1	1/2" x 1/2"		25		m.f.48		
1	1/2" x 1/2"		25		m.f.49		
1	1/2" x 1/2"		25		m.f.50		
1	1/2" x 1/2"		25		m.f.51		
1	1/2" x 1/2"		25		m.f.52		
1	1/2" x 1/2"		25		m.f.53		
1	1/2" x 1/2"		25		m.f.54		
1	1/2" x 1/2"		25		m.f.55		
1	1/2" x 1/2"		25		m.f.56		
1	1/2" x 1/2"		25		m.f.57		
1	1/2" x 1/2"		25		m.f.58		
1	1/2" x 1/2"		25		m.f.59		
1	1/2" x 1/2"		25		m.f.60		
1	1/2" x 1/2"		25		m.f.61		
1	1/2" x 1/2"		25		m.f.62		
1	1/2" x 1/2"		25		m.f.63		
1	1/2" x 1/2"		25		m.f.64		
1	1/2" x 1/2"		25		m.f.65		
1	1/2" x 1/2"		25		m.f.66		
1	1/2" x 1/2"		25		m.f.67		
1	1/2" x 1/2"		25		m.f.68		
1	1/2" x 1/2"		25		m.f.69		
1	1/2" x 1/2"		25		m.f.70		
1	1/2" x 1/2"		25		m.f.71		
1	1/2" x 1/2"		25		m.f.72		
1	1/2" x 1/2"		25		m.f.73		
1	1/2" x 1/2"		25		m.f.74		
1	1/2" x 1/2"		25		m.f.75		
1	1/2" x 1/2"		25		m.f.76		
1	1/2" x 1/2"		25		m.f.77		
1	1/2" x 1/2"		25		m.f.78		
1	1/2" x 1/2"		25		m.f.79		
1	1/2" x 1/2"		25		m.f.80		
1	1/2" x 1/2"		25		m.f.81		
1	1/2" x 1/2"		25		m.f.82		
1	1/2" x 1/2"		25		m.f.83		
1	1/2" x 1/2"		25		m.f.84		
1	1/2" x 1/2"		25		m.f.85		
1	1/2" x 1/2"		25		m.f.86		
1	1/2" x 1/2"		25		m.f.87		
1	1/2" x 1/2"		25		m.f.88		
1	1/2" x 1/2"		25		m.f.89		
1	1/2" x 1/2"		25		m.f.90		
1	1/2" x 1/2"		25		m.f.91		
1	1/2" x 1/2"		25		m.f.92		
1	1/2" x 1/2"		25		m.f.93		
1	1/2" x 1/2"		25		m.f.94		
1	1/2" x 1/2"		25		m.f.95		
1	1/2" x 1/2"		25		m.f.96		
1	1/2" x 1/2"		25		m.f.97		
1	1/2" x 1/2"		25		m.f.98		
1	1/2" x 1/2"		25		m.f.99		
1	1/2" x 1/2"		25		m.f.100		

PROJECT: **POHITOC CITY SCHOOLS**
 CUSTOMER: **FLAGSTAR CONST.**
 DETAIL: **HANDRAIL - UPPER SITE RAMP**
 DRAWING NO.: **9036**
 CHECKED BY: **DATE 8/2/22**
 SHOP ORDER: **10**
 SHEET: **10**

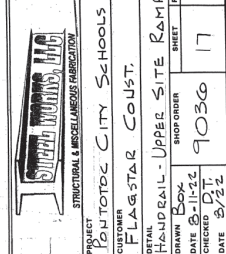
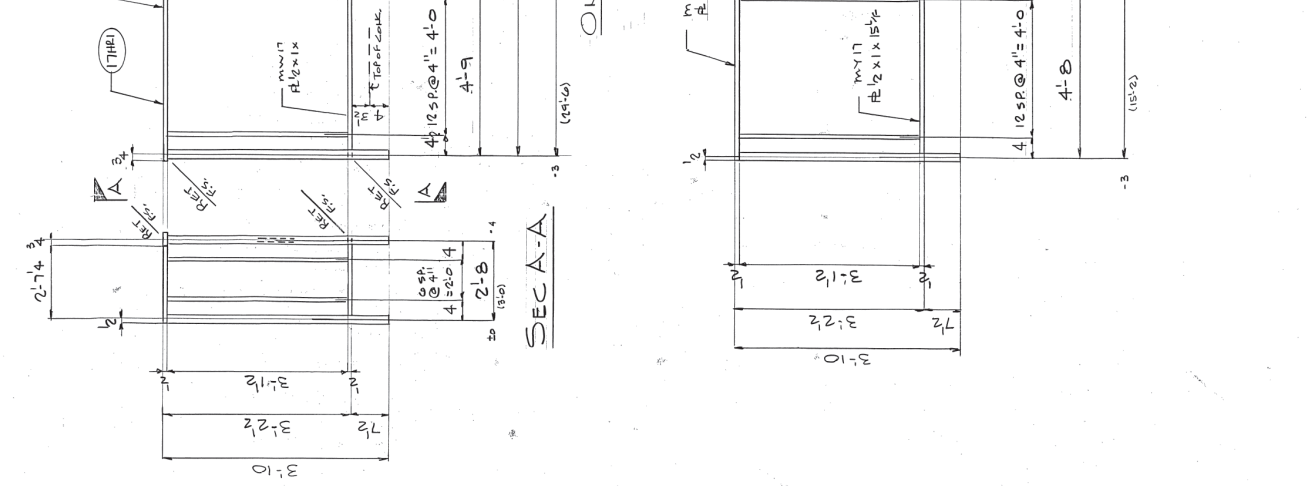
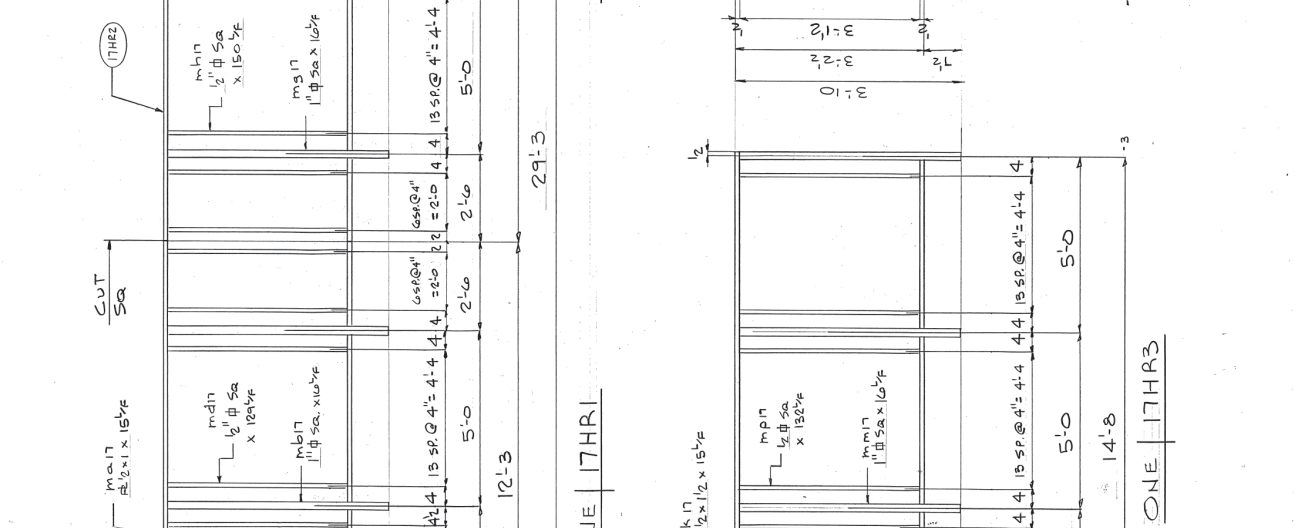
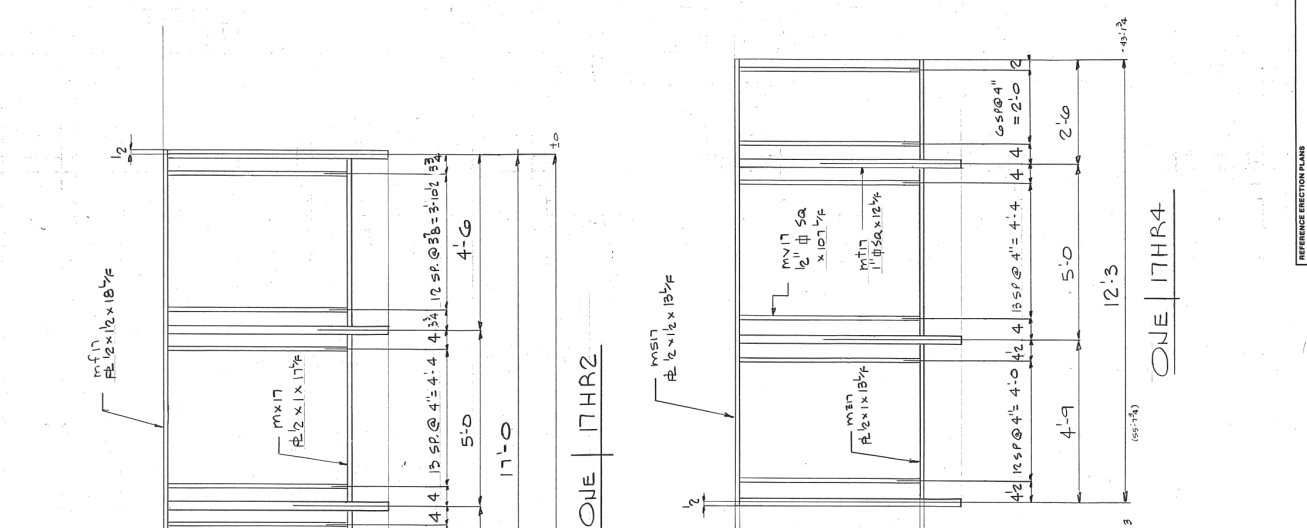
PROJECT: **POHITOC CITY SCHOOLS**
 CUSTOMER: **FLAGSTAR CONST.**
 DETAIL: **HANDRAIL - UPPER SITE RAMP**
 DRAWING NO.: **9036**
 CHECKED BY: **DATE 8/2/22**
 SHOP ORDER: **10**
 SHEET: **10**

PROJECT: **POHITOC CITY SCHOOLS**
 CUSTOMER: **FLAGSTAR CONST.**
 DETAIL: **HANDRAIL - UPPER SITE RAMP**
 DRAWING NO.: **9036**
 CHECKED BY: **DATE 8/2/22**
 SHOP ORDER: **10**
 SHEET: **10**

SHOP BILL

NO.	DESCRIPTION	LENGTH FT. IN.	ASSEMBLY MARK	SHIPPING MARK	REMARKS	WEIGHT
1	HAUDRAIL R 1/2 x 1 1/2	15 1/2	M317	T1HR2		
1	1" x 1/2 SA	60	M317			
1	1" x 1/2 SA	60	M317			
1	R 1/2 x 1 1/2	15 1/2	M317			
1	HAUDRAIL R 1/2 x 1 1/2	15 1/2	M317	T1HR2		
1	1" x 1/2 SA	60	M317			
1	1" x 1/2 SA	60	M317			
1	R 1/2 x 1 1/2	15 1/2	M317			
1	HAUDRAIL R 1/2 x 1 1/2	15 1/2	M317	T1HR3		
1	1" x 1/2 SA	60	M317			
1	1" x 1/2 SA	60	M317			
1	R 1/2 x 1 1/2	15 1/2	M317			
1	HAUDRAIL R 1/2 x 1 1/2	15 1/2	M317	T1HR4		
1	1" x 1/2 SA	60	M317			
1	1" x 1/2 SA	60	M317			
1	R 1/2 x 1 1/2	15 1/2	M317			

REVISIONS	DATE	DESCRIPTION
1	10/11/22	FIELD BOLT SUMMARY THIS SHEET
2	10/11/22	FIELD BOLT SUMMARY THIS SHEET
3	10/11/22	FIELD BOLT SUMMARY THIS SHEET



SHOP BILL

NO.	DESCRIPTION	LENGTH FT. IN.	ASSEM. MARK	SHIPPING MARK	REMARKS	WEIGHT
1	HAUDRAIL PS 1 1/2 SCH 40 X 8' X 8'	17	19HR2		1 1/2" O.D.	
1	HAUDRAIL PS 1 1/2 SCH 40 X 8' X 8'	17	19HR2		1 1/2" O.D.	
1	HAUDRAIL PS 1 1/2 SCH 40 X 8' X 8'	17	19HR2		1 1/2" O.D.	
1	HAUDRAIL PS 1 1/2 SCH 40 X 8' X 8'	17	19HR2		1 1/2" O.D.	
1	HAUDRAIL PS 1 1/2 SCH 40 X 8' X 8'	17	19HR2		1 1/2" O.D.	
1	HAUDRAIL PS 1 1/2 SCH 40 X 8' X 8'	17	19HR2		1 1/2" O.D.	

PROJECT
COUNTY
CITY SCHOOLS

CONTRACTOR
FLAGSTAR CONST.

RETAIL
HAUDRAIL - UPPER SITE RAMP

DRAWN BY
BOB

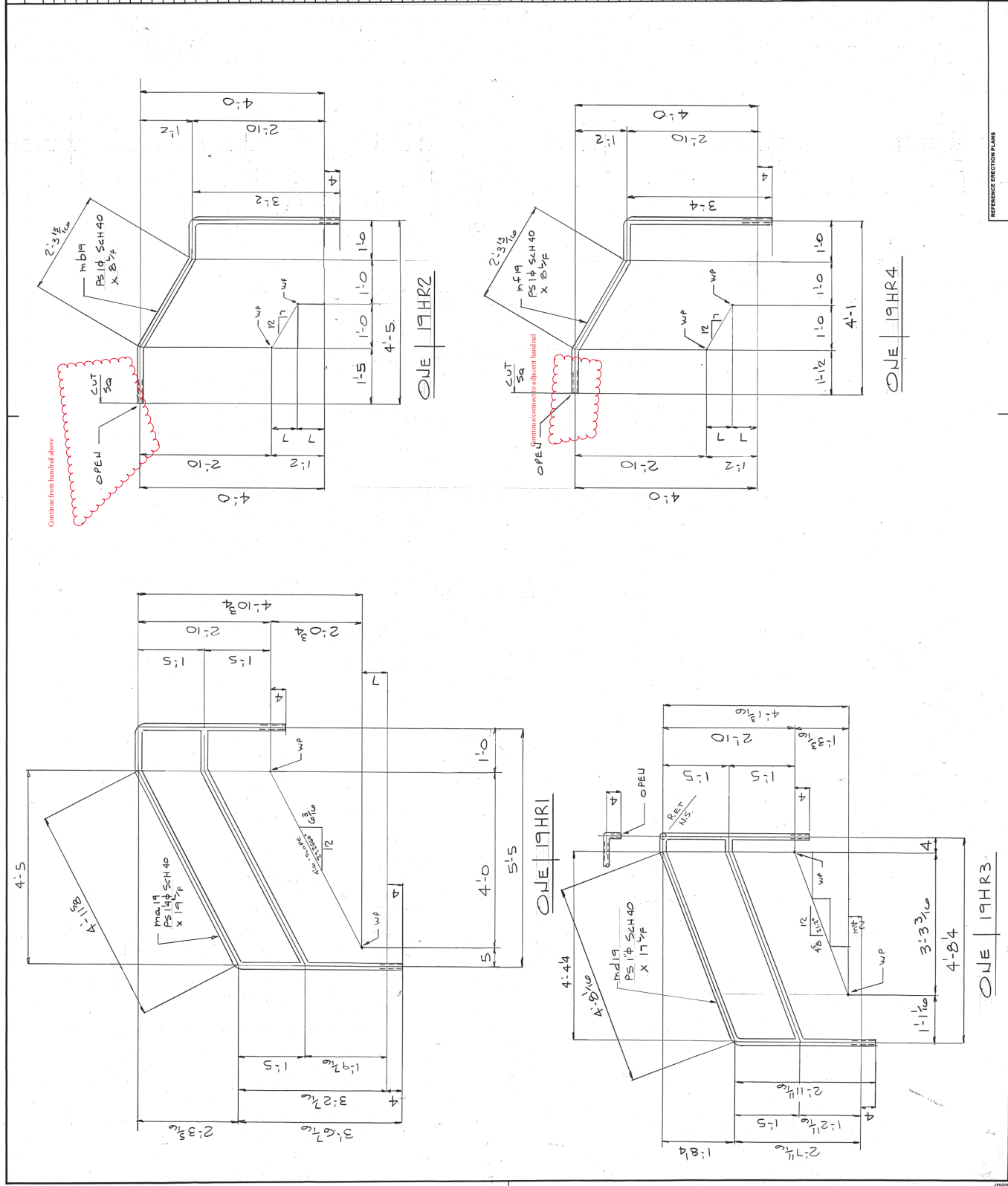
CHECKED BY
D.T.

DATE
8-15-22

DATE
8-22

9036

19



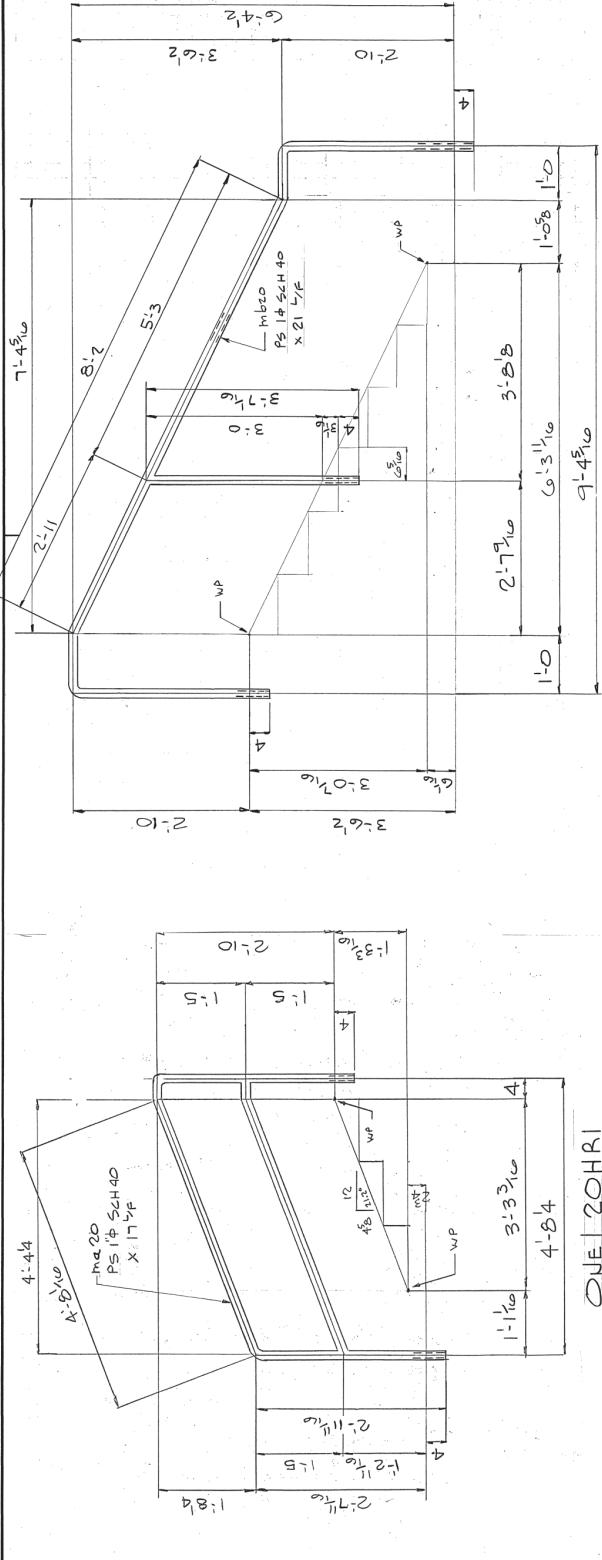
REFERENCE ERECTION PLANS

NOTE

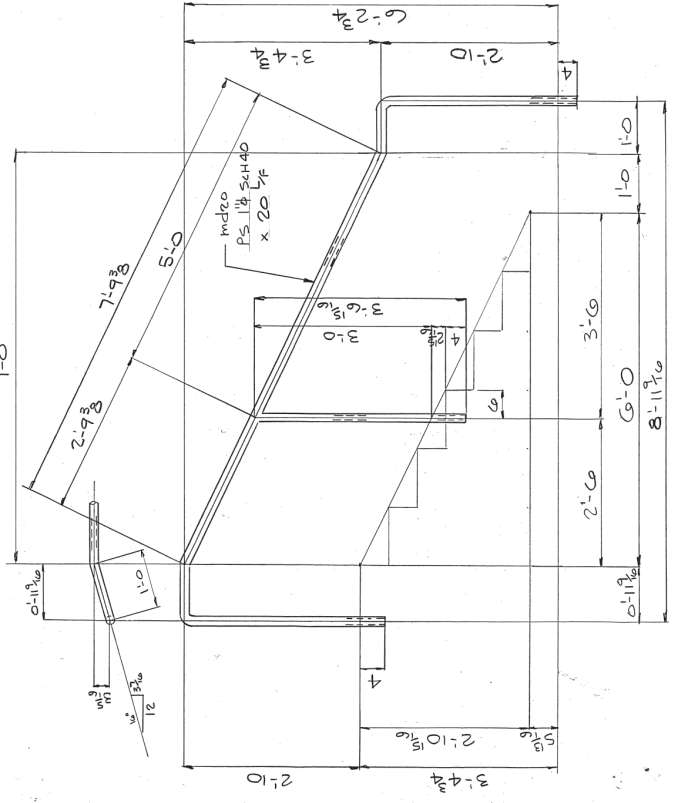
HOLE NUMBER

DATE

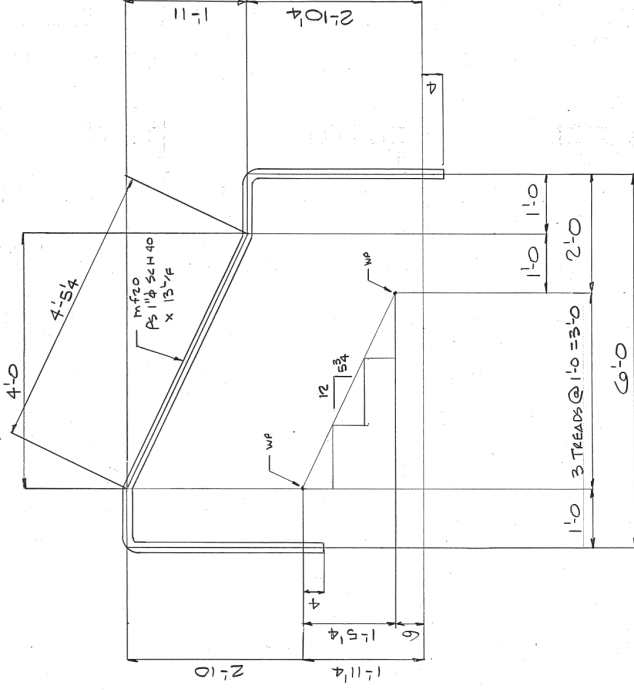
BY



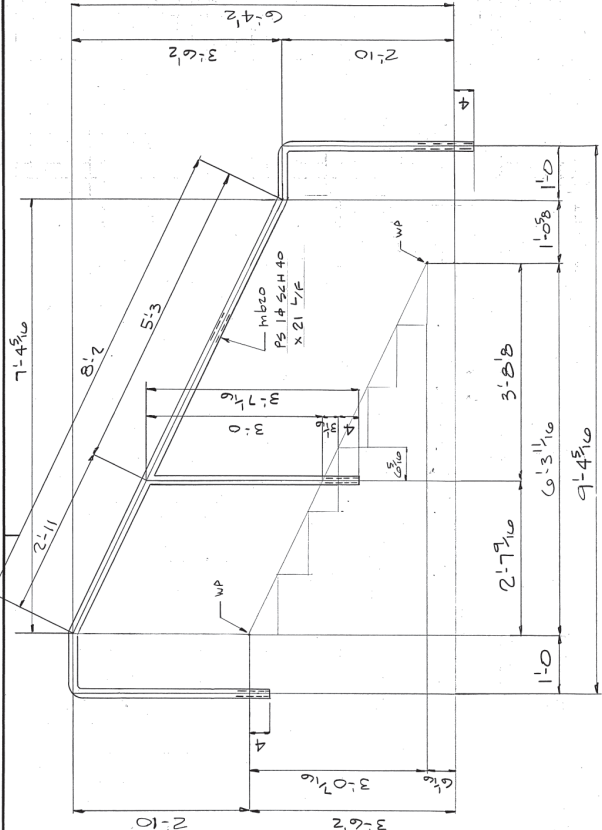
ONE 20HR1



ONE 20HR3



ONE 20HR2



ONE 20HR4

NO.	DESCRIPTION	LENGTH FT. IN.	ASSEMBLY MARK	SHIPPING MARK	REMARKS	WEIGHT
1	HANDRAIL	13'-0 1/2	1/2	20HR1		
1	HANDRAIL	13'-0 1/2	1/2	20HR2		
1	HANDRAIL	13'-0 1/2	1/2	20HR3		
1	HANDRAIL	13'-0 1/2	1/2	20HR4		

NO.	DESCRIPTION	DATE	BY
1	FIELD BOAT SUMMARY THIS SHEET		

REVISIONS	DATE	DESCRIPTION
1		

PROJECT: PORTSIDE CITY SCHOOLS
 DRAWN: BOB
 CHECKED: D.T.
 DATE: 5/22

STRUCTURAL & MISCELLANEOUS FABRICATOR

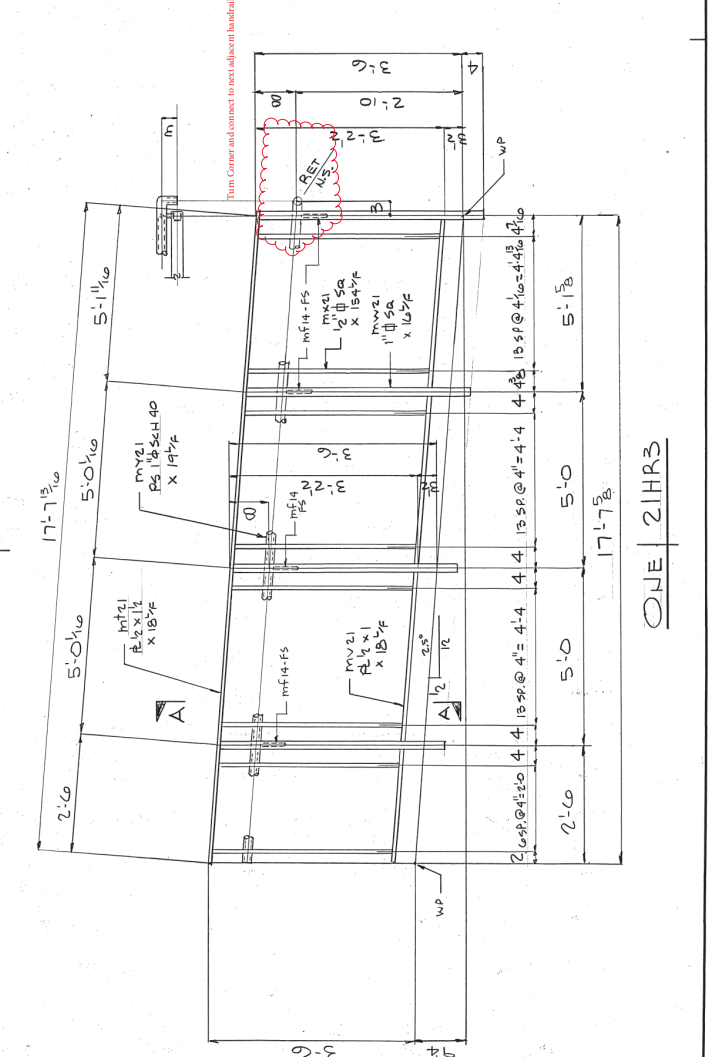
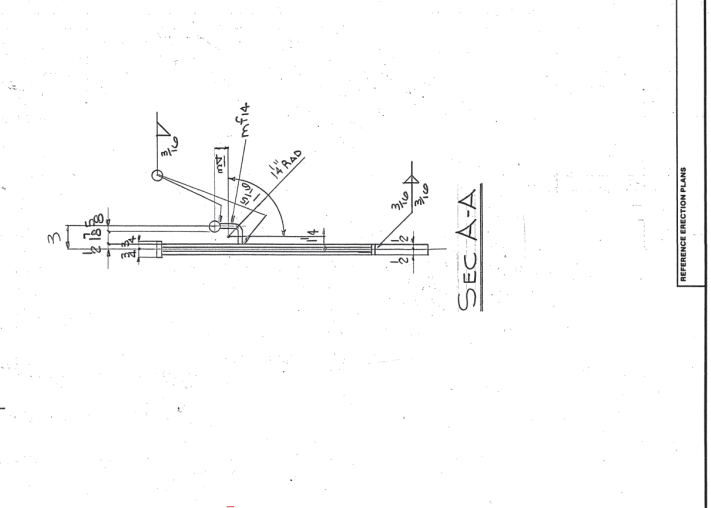
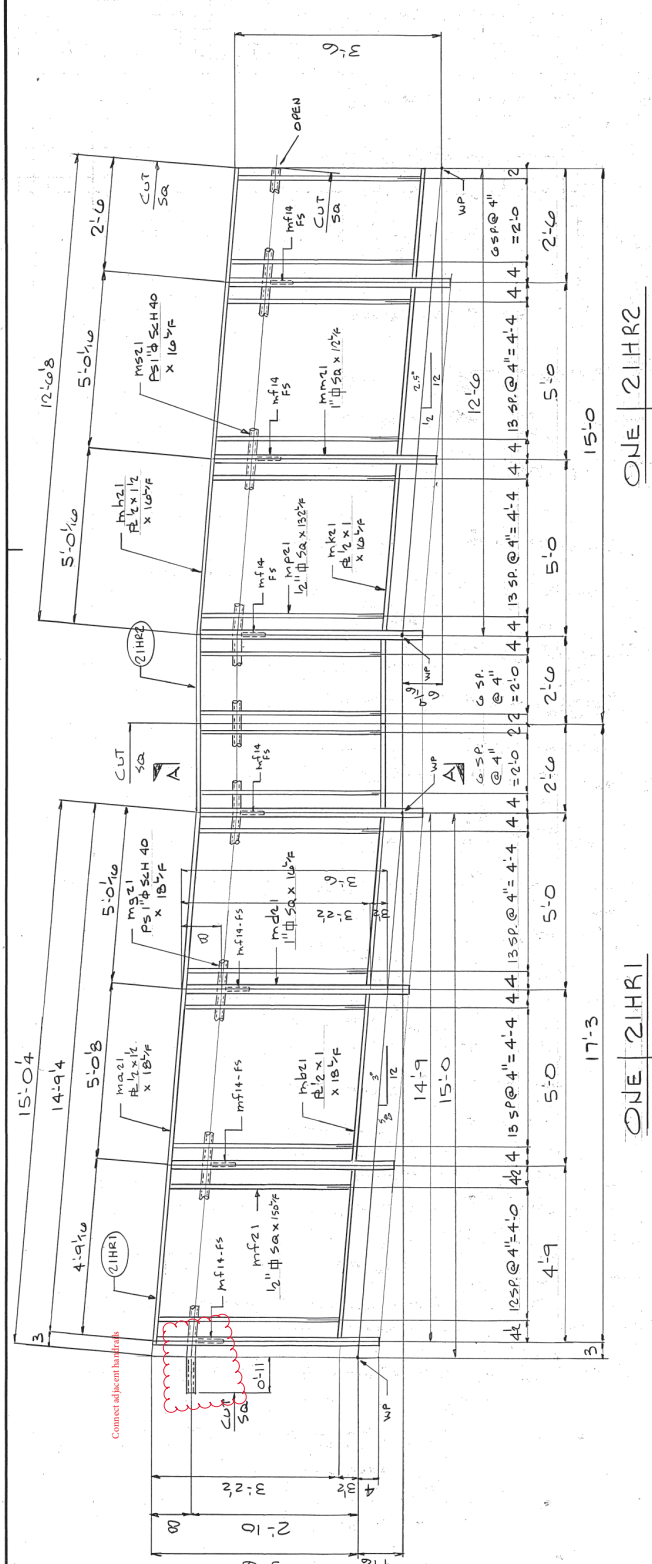
PART NAME: SHIP CAB
 PRIMER PAINT

MATERIAL GRADE:
 NONE

HOLES:
 NONE

PAGE: 20
 SHEET: 20

NO	DESCRIPTION	LENGTH FT.	ASSEMBLY MARK	SHIPPING MARK	REMARKS	WEIGHT
1	HALF GAL.	15	1/2			
1	RE 1/2 x 1/2	18	1/2			
1	RE 1/2 x 1/2	18	1/2			
1	RE 1/2 x 1/2	18	1/2			
1	PS 1/8 x 1/2	150	1/2			
1	PS 1/8 x 1/2	150	1/2			
1	PS 1/8 x 1/2	150	1/2			
4	ROD 1/2"	12	1/2		BEUT	
21HR2						
1	RE 1/2 x 1/2	18	1/2			
1	RE 1/2 x 1/2	18	1/2			
1	RE 1/2 x 1/2	18	1/2			
1	PS 1/8 x 1/2	150	1/2			
1	PS 1/8 x 1/2	150	1/2			
1	PS 1/8 x 1/2	150	1/2			
1	PS 1/8 x 1/2	150	1/2			
4	ROD 1/2"	12	1/2		BEUT	
21HR3						
1	RE 1/2 x 1/2	18	1/2			
1	RE 1/2 x 1/2	18	1/2			
1	RE 1/2 x 1/2	18	1/2			
1	PS 1/8 x 1/2	150	1/2			
1	PS 1/8 x 1/2	150	1/2			
1	PS 1/8 x 1/2	150	1/2			
1	PS 1/8 x 1/2	150	1/2			
4	ROD 1/2"	12	1/2		BEUT	



REVISONS		DATE	DESCRIPTION
1			
2			

FIELD NO.	1	2	3
DATE			
DESCRIPTION			

NO.	1	2	3	4	5	6	7	8	9	10	11	12	13	14	15
DATE															
DESCRIPTION															

PROJECT	FOURTEEN CITY SCHOOLS
DRAWN BY	FLUGSTAR CONST.
CHECKED BY	HANDRAIL - UPPER SITE RAMP
DATE	8-16-22
SHOP ORDER NO.	9036
CHECKED BY	9036
DATE	8/22

PAIN ONE SHOP COAT
PRIMER PAINT

MATERIAL QUANTITY LIST

CLEANING

NOLES NONE

REFERENCE SECTION PLANS

SHOP BILL

NO.	DESCRIPTION	ASSEMBLY	SHIPPING MARK	REMARKS	WEIGHT
1	1" x 1/2" SCH 40	40	22HR1		
2	1" x 1/2" SCH 40	40	22HR2		
3	1" x 1/2" SCH 40	40	22HR3		
4	1" x 1/2" SCH 40	40	22HR4		
5	1" x 1/2" SCH 40	40	22HR5		
6	1" x 1/2" SCH 40	40	22HR6		
7	1" x 1/2" SCH 40	40	22HR7		
8	1" x 1/2" SCH 40	40	22HR8		
9	1" x 1/2" SCH 40	40	22HR9		
10	1" x 1/2" SCH 40	40	22HR10		
11	1" x 1/2" SCH 40	40	22HR11		
12	1" x 1/2" SCH 40	40	22HR12		
13	1" x 1/2" SCH 40	40	22HR13		
14	1" x 1/2" SCH 40	40	22HR14		
15	1" x 1/2" SCH 40	40	22HR15		
16	1" x 1/2" SCH 40	40	22HR16		
17	1" x 1/2" SCH 40	40	22HR17		
18	1" x 1/2" SCH 40	40	22HR18		
19	1" x 1/2" SCH 40	40	22HR19		
20	1" x 1/2" SCH 40	40	22HR20		
21	1" x 1/2" SCH 40	40	22HR21		
22	1" x 1/2" SCH 40	40	22HR22		
23	1" x 1/2" SCH 40	40	22HR23		
24	1" x 1/2" SCH 40	40	22HR24		
25	1" x 1/2" SCH 40	40	22HR25		
26	1" x 1/2" SCH 40	40	22HR26		
27	1" x 1/2" SCH 40	40	22HR27		
28	1" x 1/2" SCH 40	40	22HR28		
29	1" x 1/2" SCH 40	40	22HR29		
30	1" x 1/2" SCH 40	40	22HR30		
31	1" x 1/2" SCH 40	40	22HR31		
32	1" x 1/2" SCH 40	40	22HR32		
33	1" x 1/2" SCH 40	40	22HR33		
34	1" x 1/2" SCH 40	40	22HR34		
35	1" x 1/2" SCH 40	40	22HR35		
36	1" x 1/2" SCH 40	40	22HR36		
37	1" x 1/2" SCH 40	40	22HR37		
38	1" x 1/2" SCH 40	40	22HR38		
39	1" x 1/2" SCH 40	40	22HR39		
40	1" x 1/2" SCH 40	40	22HR40		

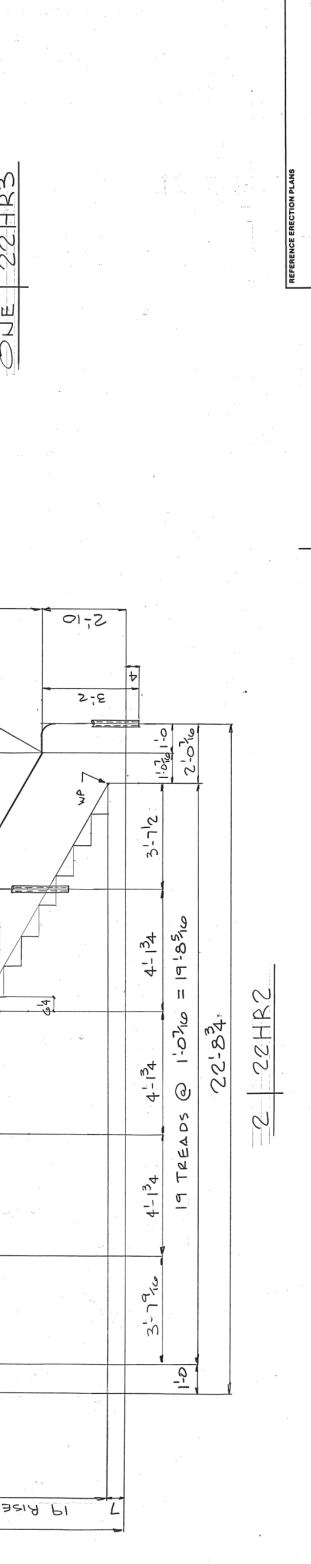
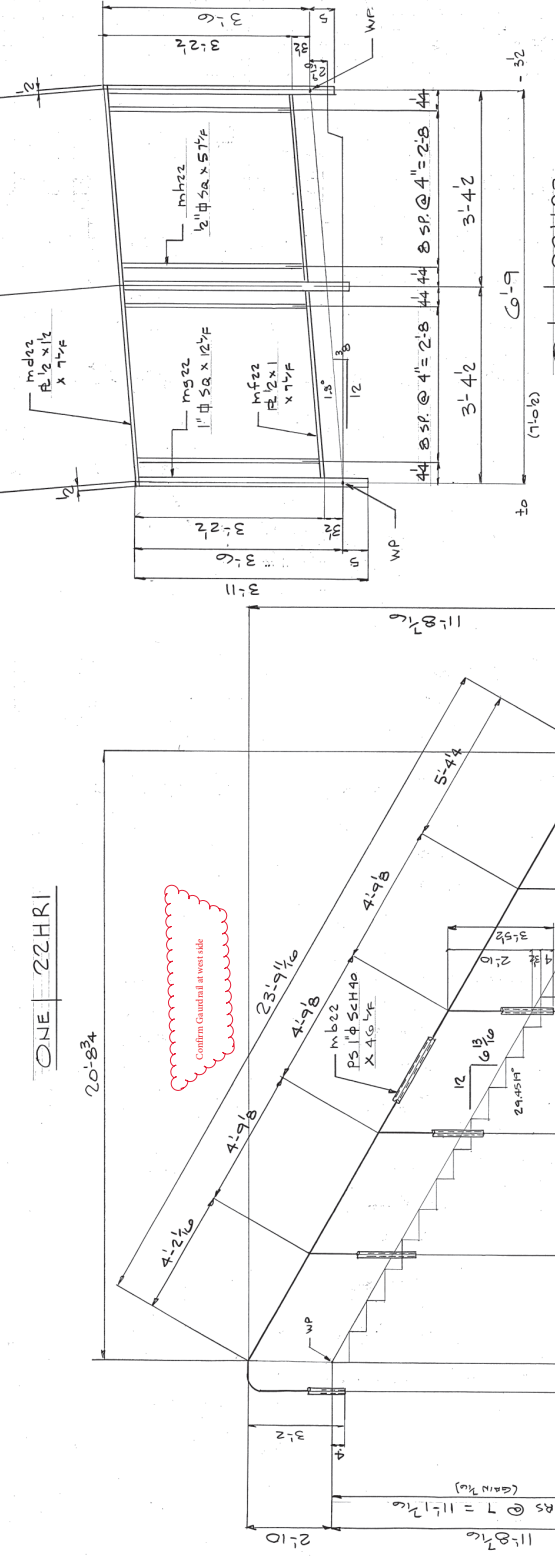
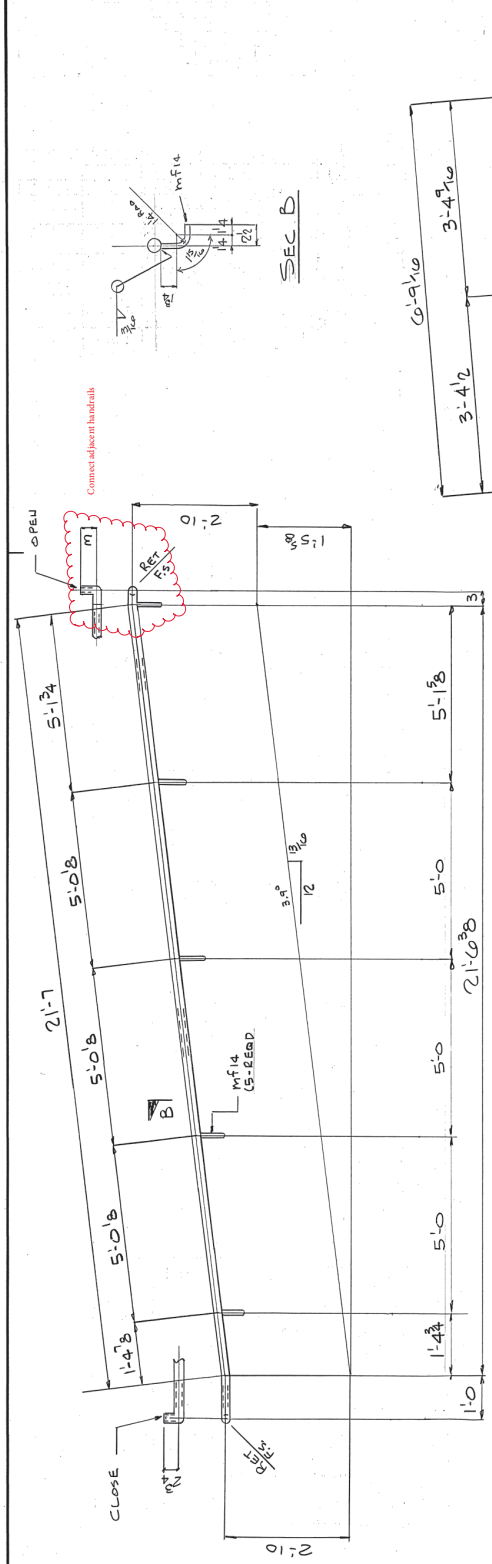
REVISIONS

NO.	DATE	DESCRIPTION
1		
2		
3		
4		
5		
6		
7		
8		
9		
10		
11		
12		
13		
14		
15		
16		
17		
18		
19		
20		
21		
22		
23		
24		
25		
26		
27		
28		
29		
30		
31		
32		
33		
34		
35		
36		
37		
38		
39		
40		

FIELD BOLT SUMMARY THIS SHEET

NO.	DATE	DESCRIPTION
1		
2		
3		
4		
5		
6		
7		
8		
9		
10		
11		
12		
13		
14		
15		
16		
17		
18		
19		
20		
21		
22		
23		
24		
25		
26		
27		
28		
29		
30		
31		
32		
33		
34		
35		
36		
37		
38		
39		
40		

PROJECT: BUNDTAC CITY SCHOOLS
DETAIL: FLAGSTAR CONST.
DRAWN BY: [Signature]
CHECKED BY: [Signature]
DATE: 8/22
SHOP ORDER NO.: 9036
SHEET NO.: 22



STRUCTURAL & MISCELLANEOUS FABRICATOR

PROJECT: BUNDTAC CITY SCHOOLS
DETAIL: FLAGSTAR CONST.
DRAWN BY: [Signature]
CHECKED BY: [Signature]
DATE: 8/22
SHOP ORDER NO.: 9036
SHEET NO.: 22

NO.	DESCRIPTION	LENGTH FT. IN.	ASSEMBLY MARK	SHIPPING MARK	REMARKS	WEIGHT
1	HANDRAIL PS 1 1/8 SCH 40	12	mf23	23HR1	186.00	
1	HANDRAIL PS 1 1/8 SCH 40	23	mf23	23HR2		
1	HANDRAIL PS 1 1/8 SCH 40	34	mf23	23HR5		
1	HANDRAIL PS 1 1/8 SCH 40	23	mf23	23HR4		
1	HANDRAIL PS 1 1/8 SCH 40	30	mf23	23HR5		
1	WALL RAIL PS 1 1/8 SCH 40	14	mf23	23HR6		
1	WASHER M18x1.5	4	mf23	23HR7		

REVISIONS

NO.	DATE	DESCRIPTION
1	12/28/23	ISSUE
2	1/10/24	REVISED
3	1/10/24	REVISED

PROJECT SUMMARY SHEET

PROJECT: PONTIAC CITY SCHOOLS
 CUSTOMER: FLAGSTAR CONST.
 SHEET: 23
 DATE: 8/21

DETAIL: HANDRAIL - UPPER SITE RAMP

PROJECT: PONTIAC CITY SCHOOLS
 CUSTOMER: FLAGSTAR CONST.
 SHEET: 23
 DATE: 8/21

MATERIALS

PS 1 1/8 SCH 40
 M18x1.5
 M18x1.5

PAINT

PRIMER PAINT
 SHOP COAT

CLEANING

WIPER

HOLES

NONE

REFERENCE ERECTION PLANS

ONE 23HR1
 ONE 23HR2
 ONE 23HR4
 ONE 23HR5

