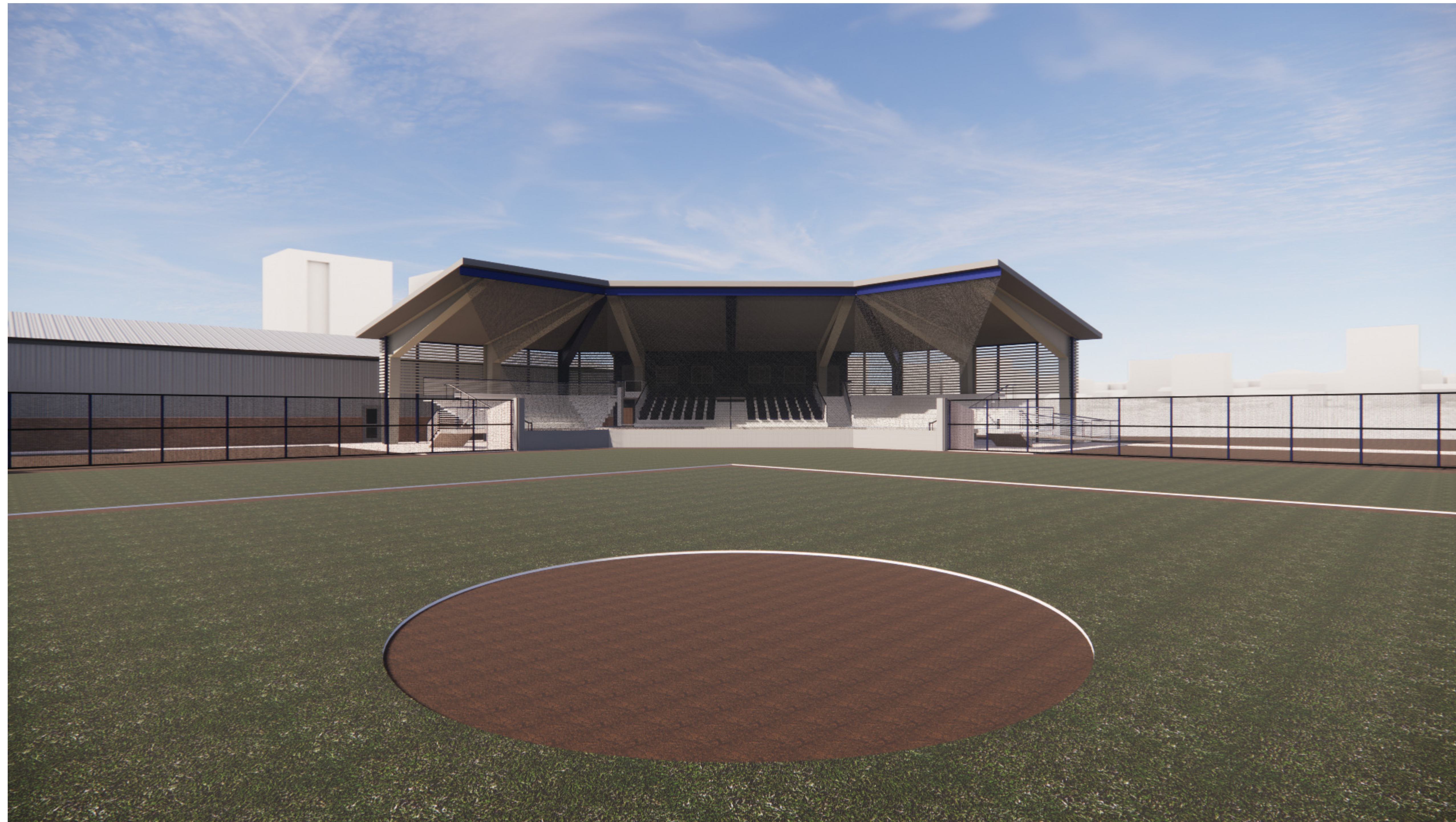


DALE | BAILEY

J a c k s o n • B i l o x i

AN ASSOCIATION

M i s s i s s i p p i



Meridian School District



Meridian, MS

DPA PN: 22034

Schematic Design
November 8, 2022

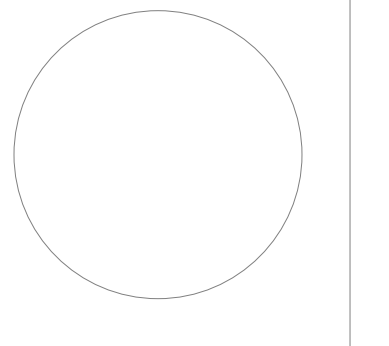
Superintendent Dr. Amy Carter

Board of Education

Board President	Mrs. Sally Gray
Board Vice-President	Mrs. Beverly Pennington
Secretary	Mr. Ron Turner, Sr.
Board Member	Ms. Gwendolyn Hardaway

Team

Owner	Meridian Public School District
Architect	Dale Bailey, an association
Structural	Structural Design Group
Mechanical	GSK Mechanical, Inc.
Electrical	The Power Source, PLLC
Civil	Carter Miller Sansing, Ltd.



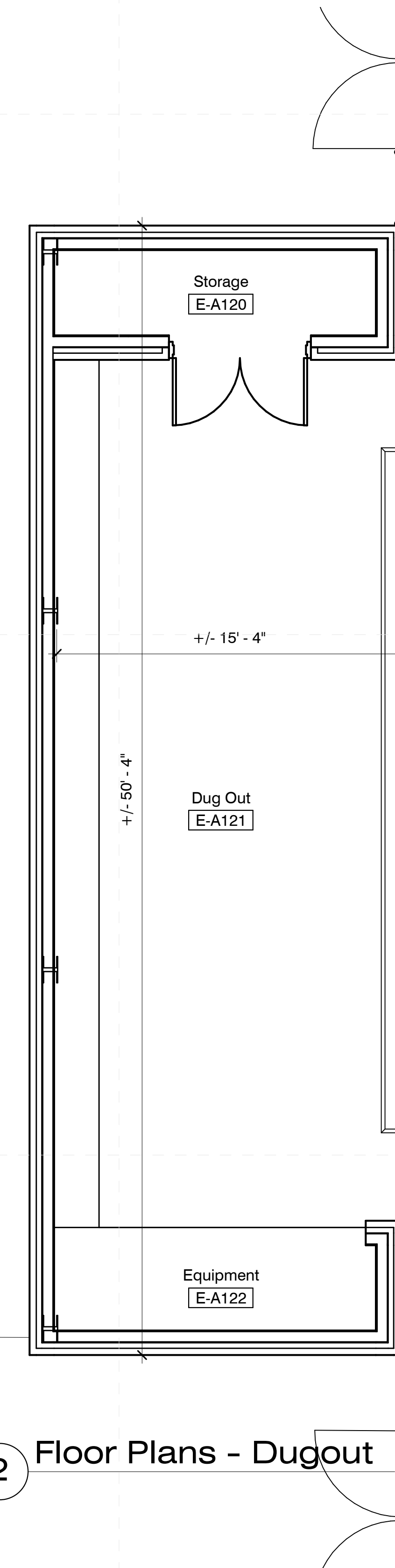
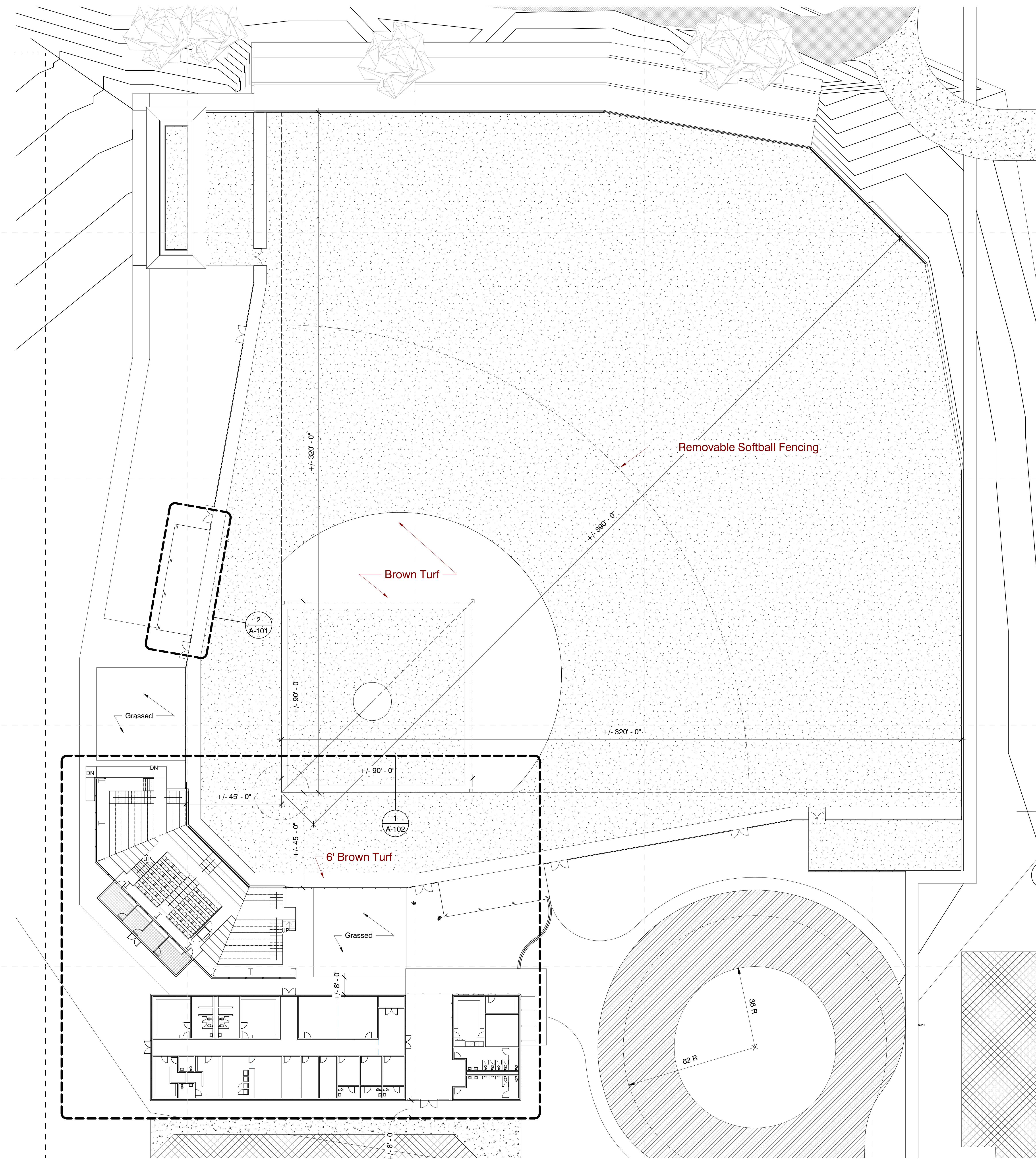
Meridian School District
Meridian, MS

Schematic
Design

Project No 22034
Date November 8, 2022
Revisions Rev Date

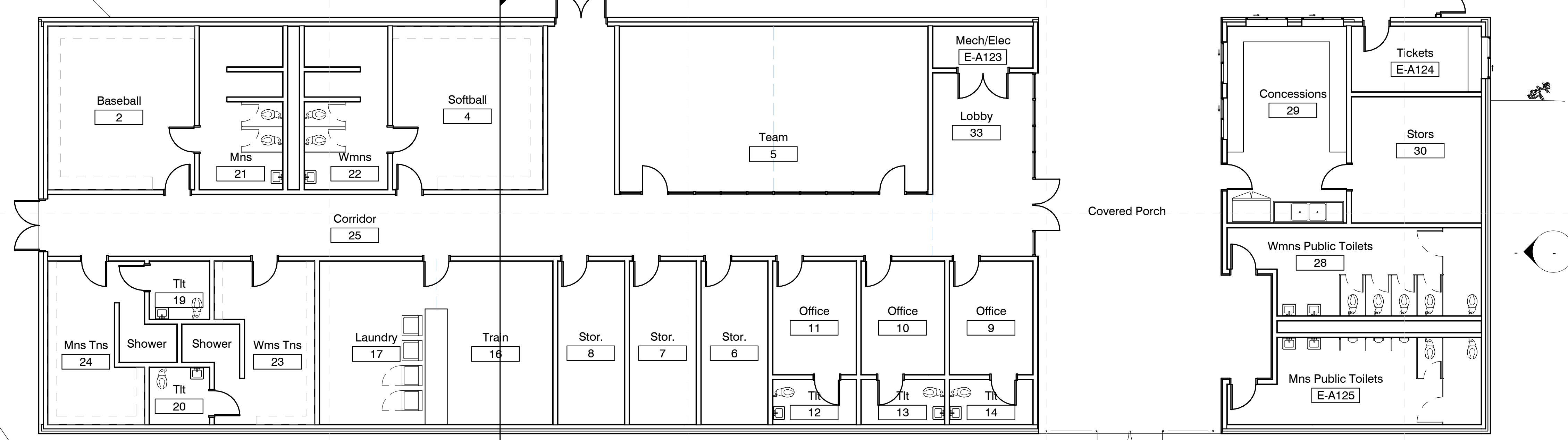
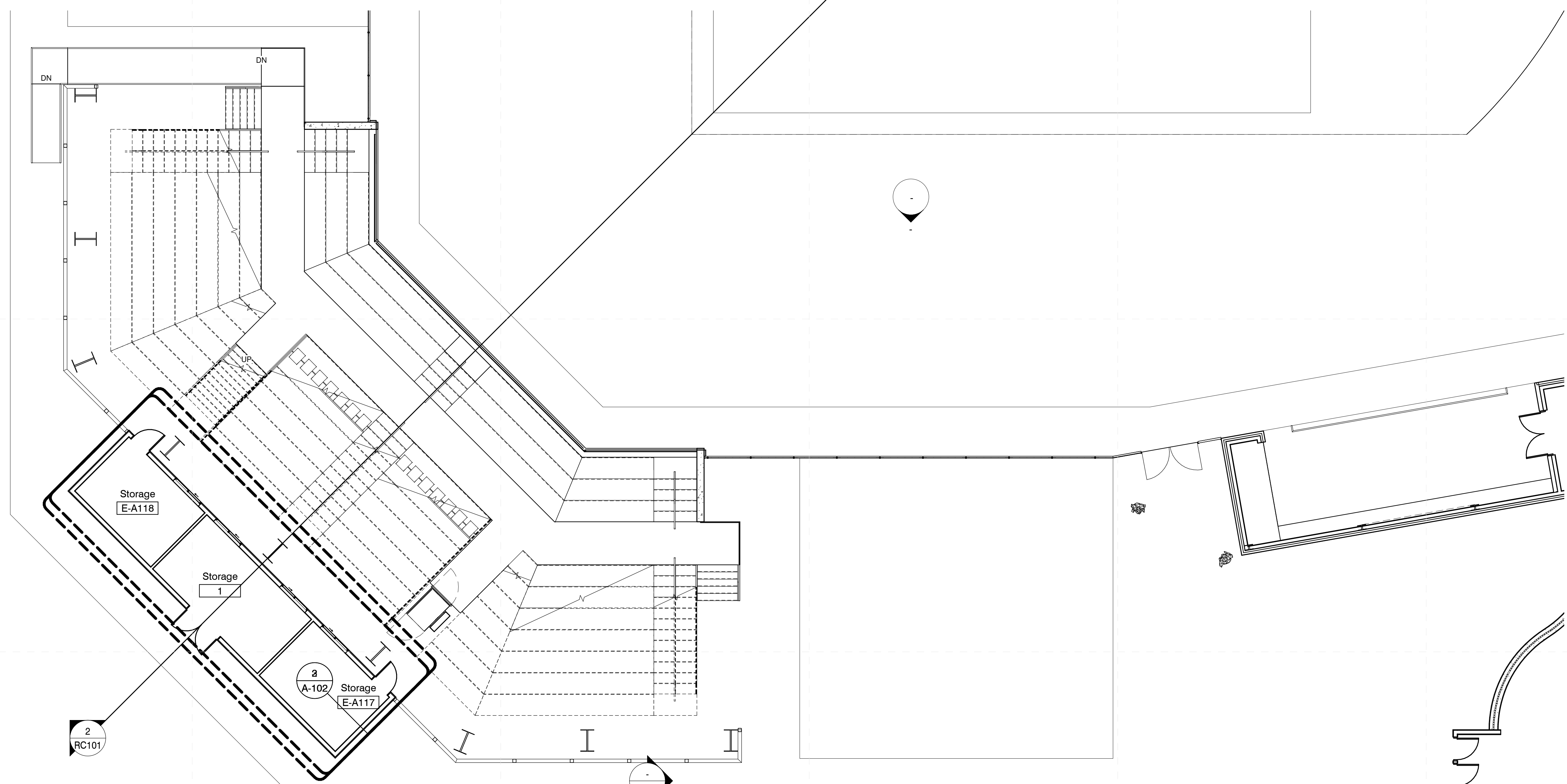
A-101

Composite Floor Plans -
Base Bid

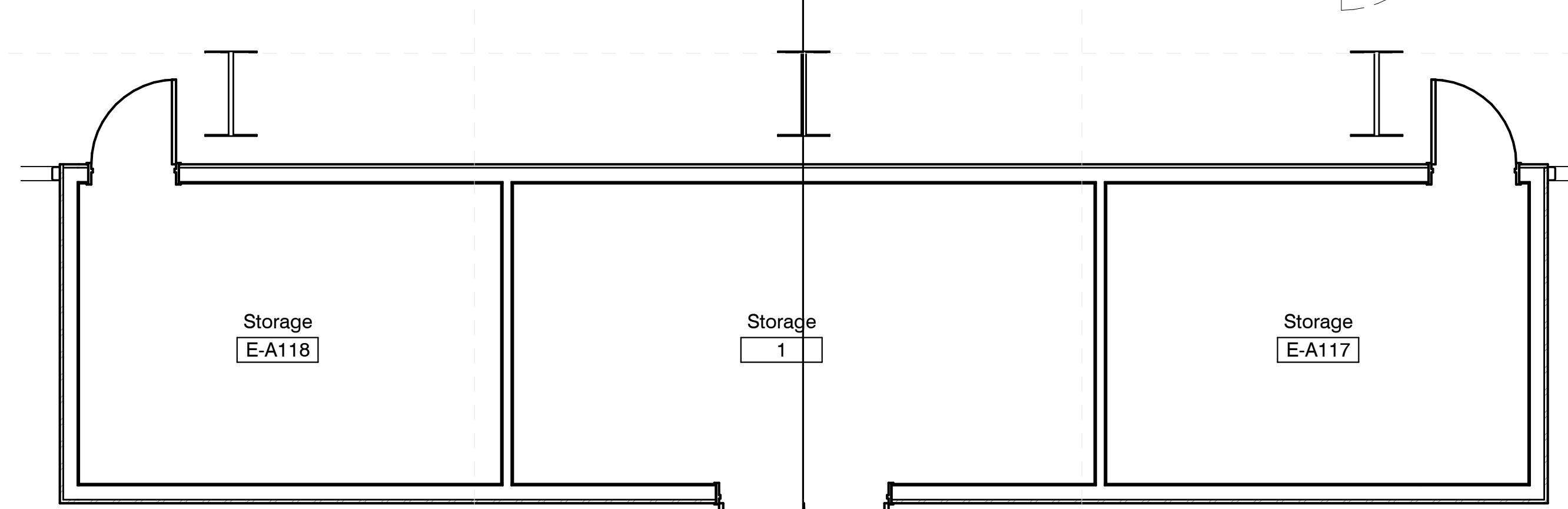


2 Floor Plans - Dugout

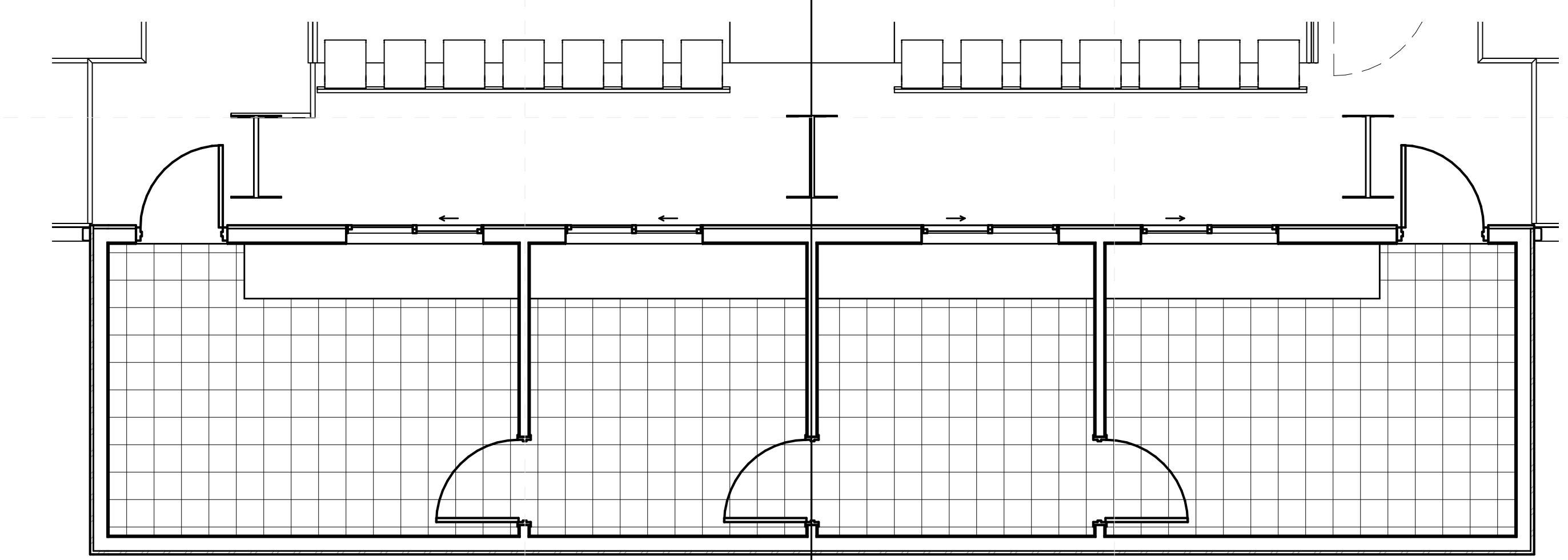
1 Stadium & Field House



1 Floor Plans - Stadium & Field House

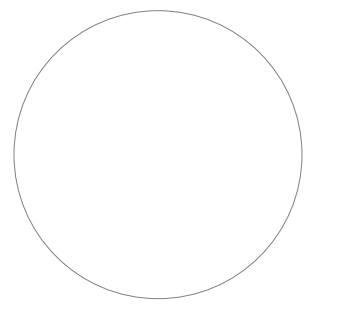


2 Floor Plans - Press Box Level 1



3 Floor Plans - Press Box Level 2

10/14/2022 1:07:34 PM C:\Users\jppur\Documents\22034_Meridian_High_Athletics_paulpurses\220HY.rvt



Meridian School District
Meridian, MS

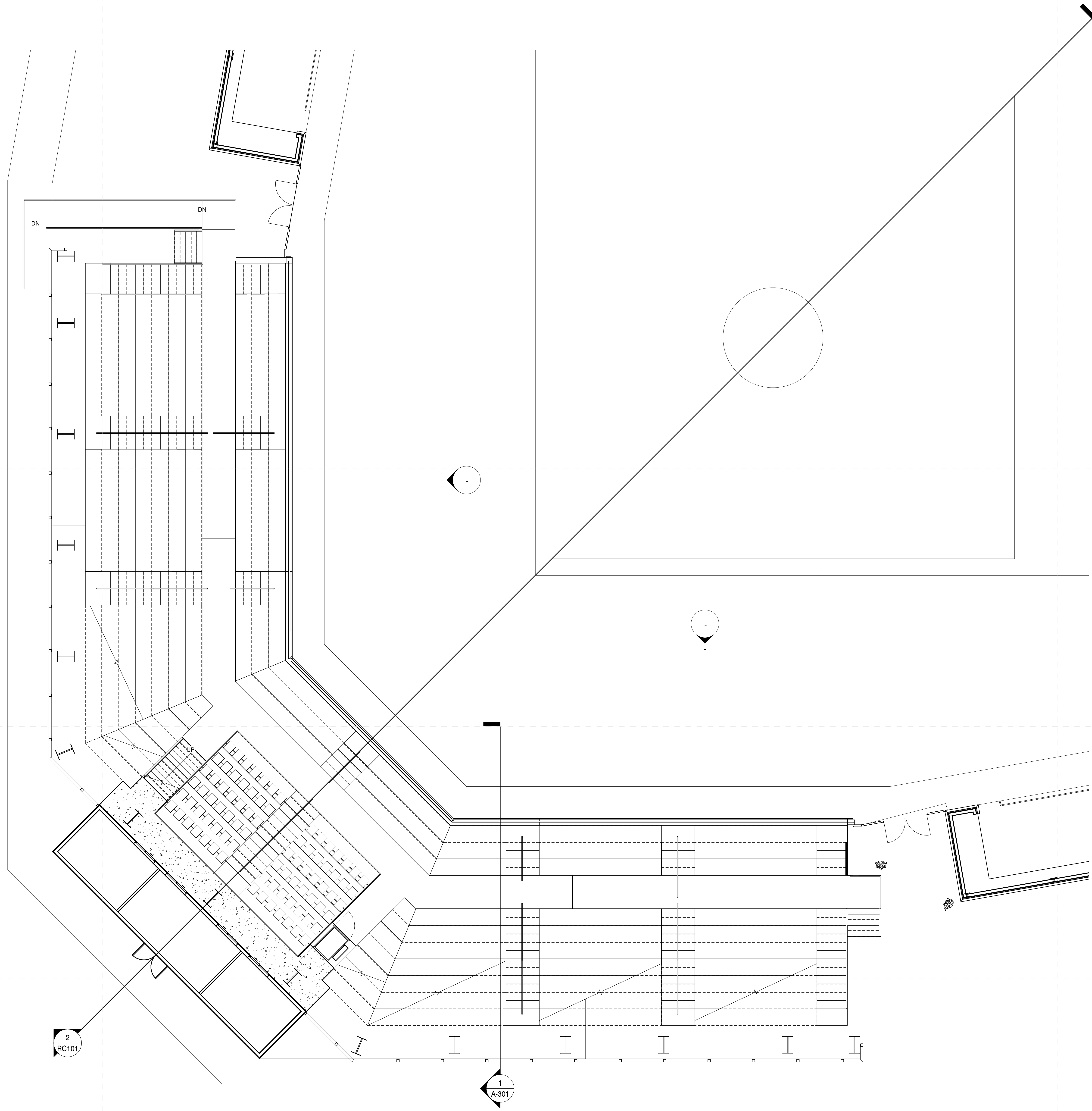
Schematic
Design

Project No 22034
Date November 8, 2022
Revisions Rev Date

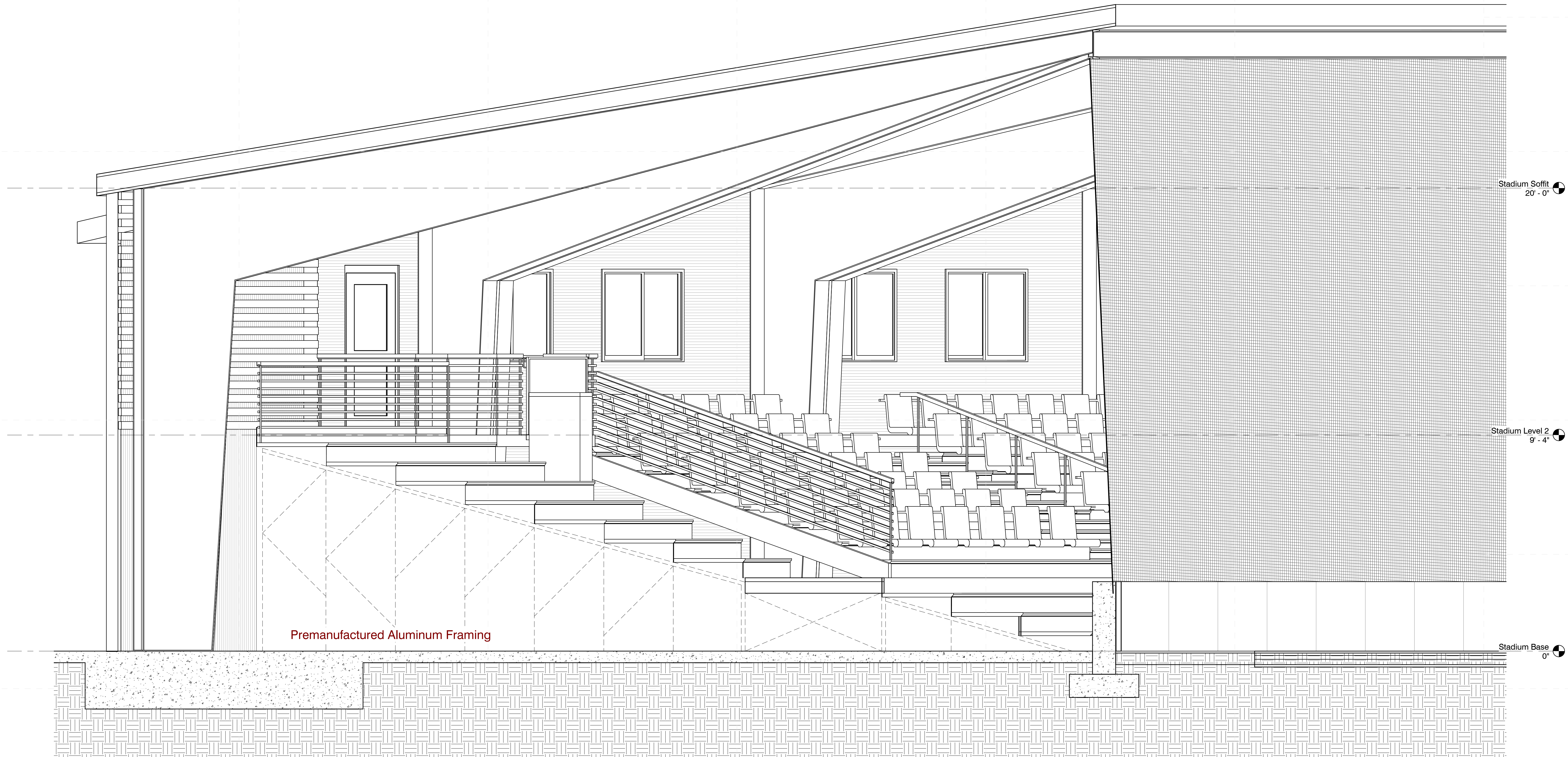
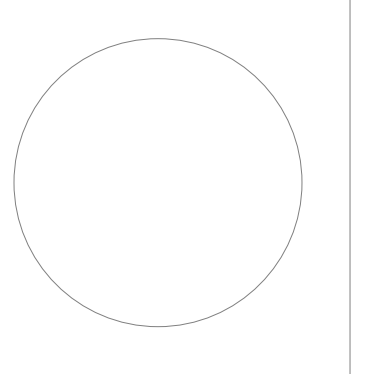
Revisions	Rev Date

A-122

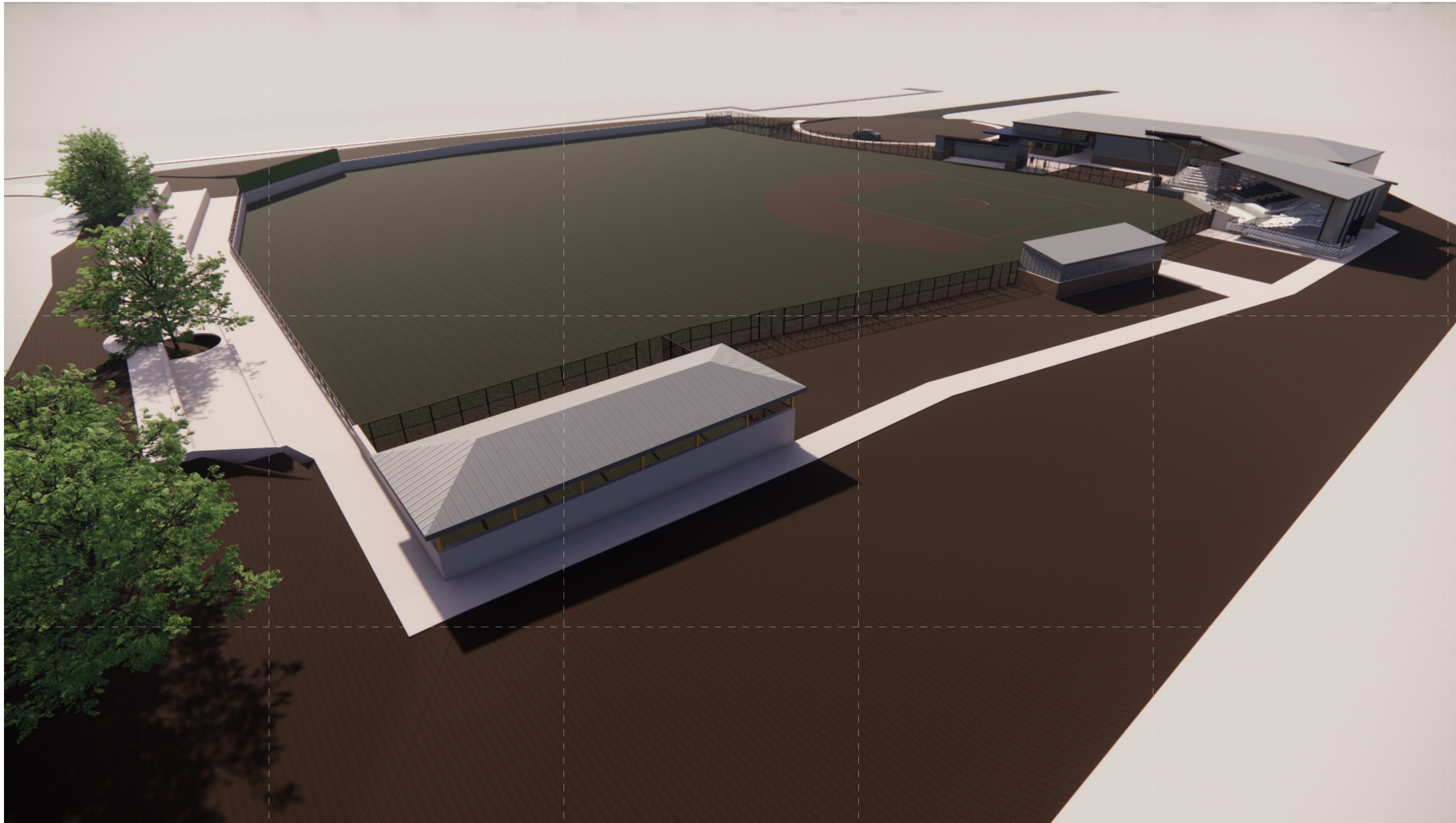
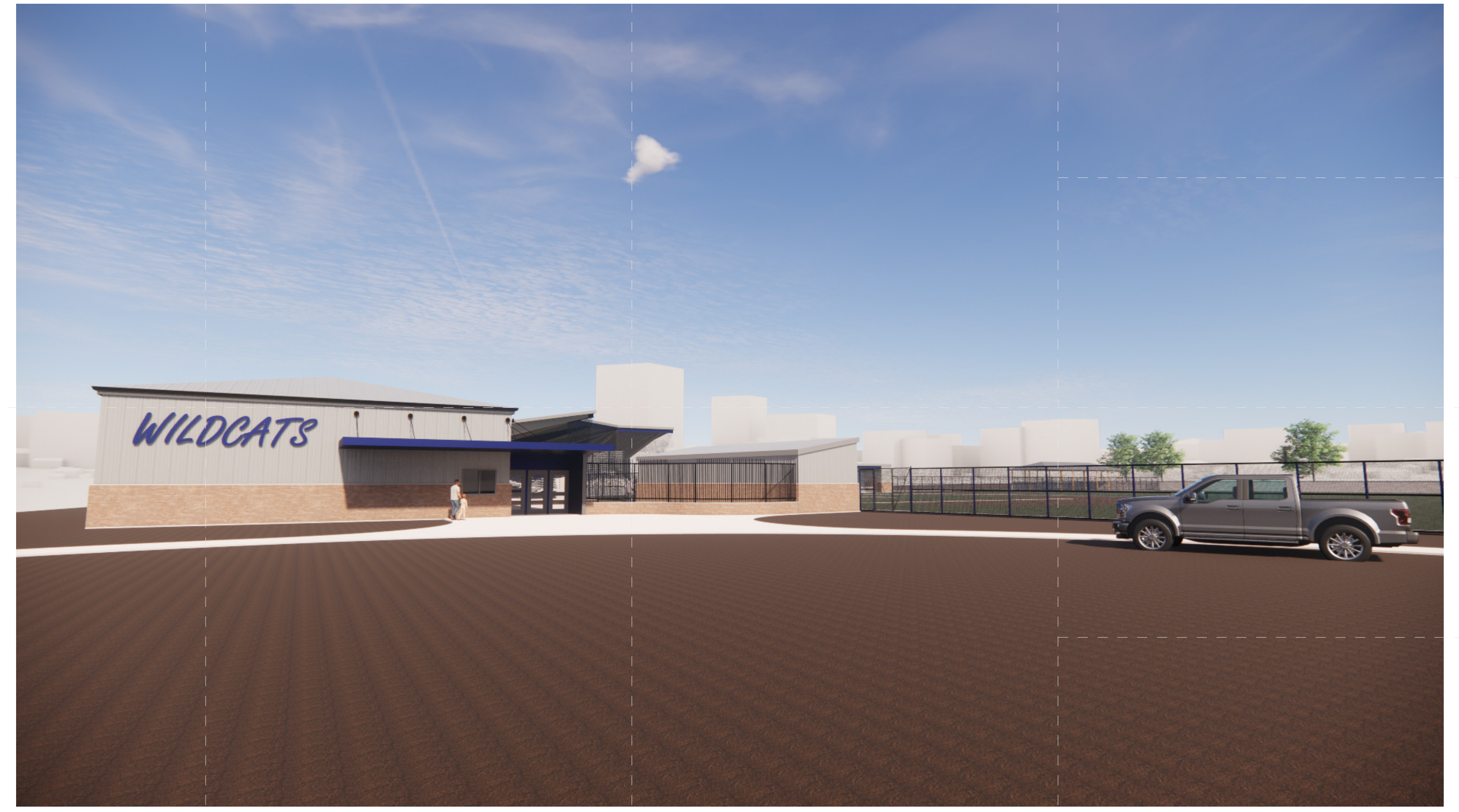
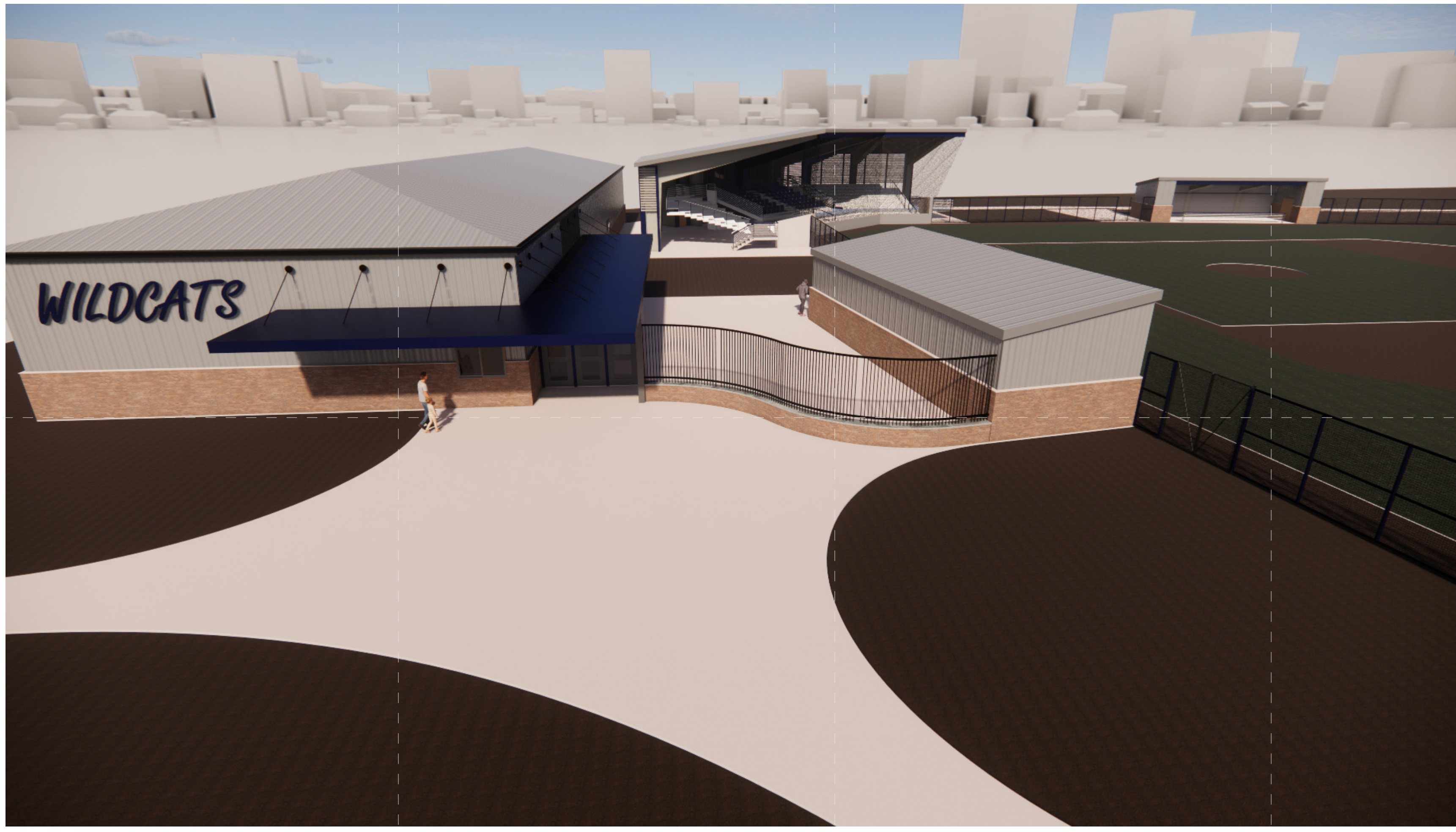
Floor Plans with Alt 001



1 Floor Plans - Stadium & Field House Alt 001

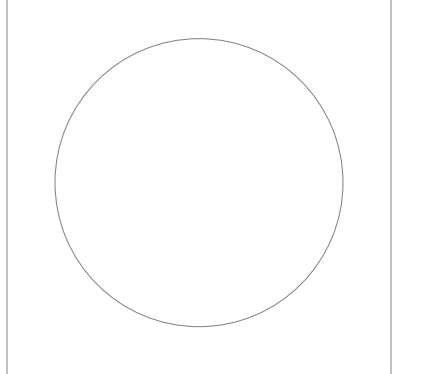


1 Stadium Cross Section



DALE BAILEY
AN ASSOCIATION

Architects
 One Jackson Place 250
 188 East Capitol Street
 Jackson, MS 39201
 p 601.352.5411
 201 Park Court Suite B
 Ridgeland, MS 39157
 p 601.790.9432
 161 Lameuse St. Suite 201
 Biloxi, MS 39530
 p 228.374.1409
 dalebaileyplans.com

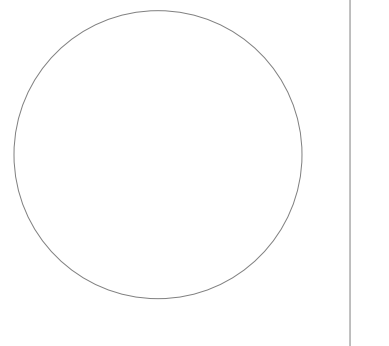


Meridian School District
Meridian, MS

Schematic Design

Project No	22034
Date	November 8, 2022
Revisions	Rev Date

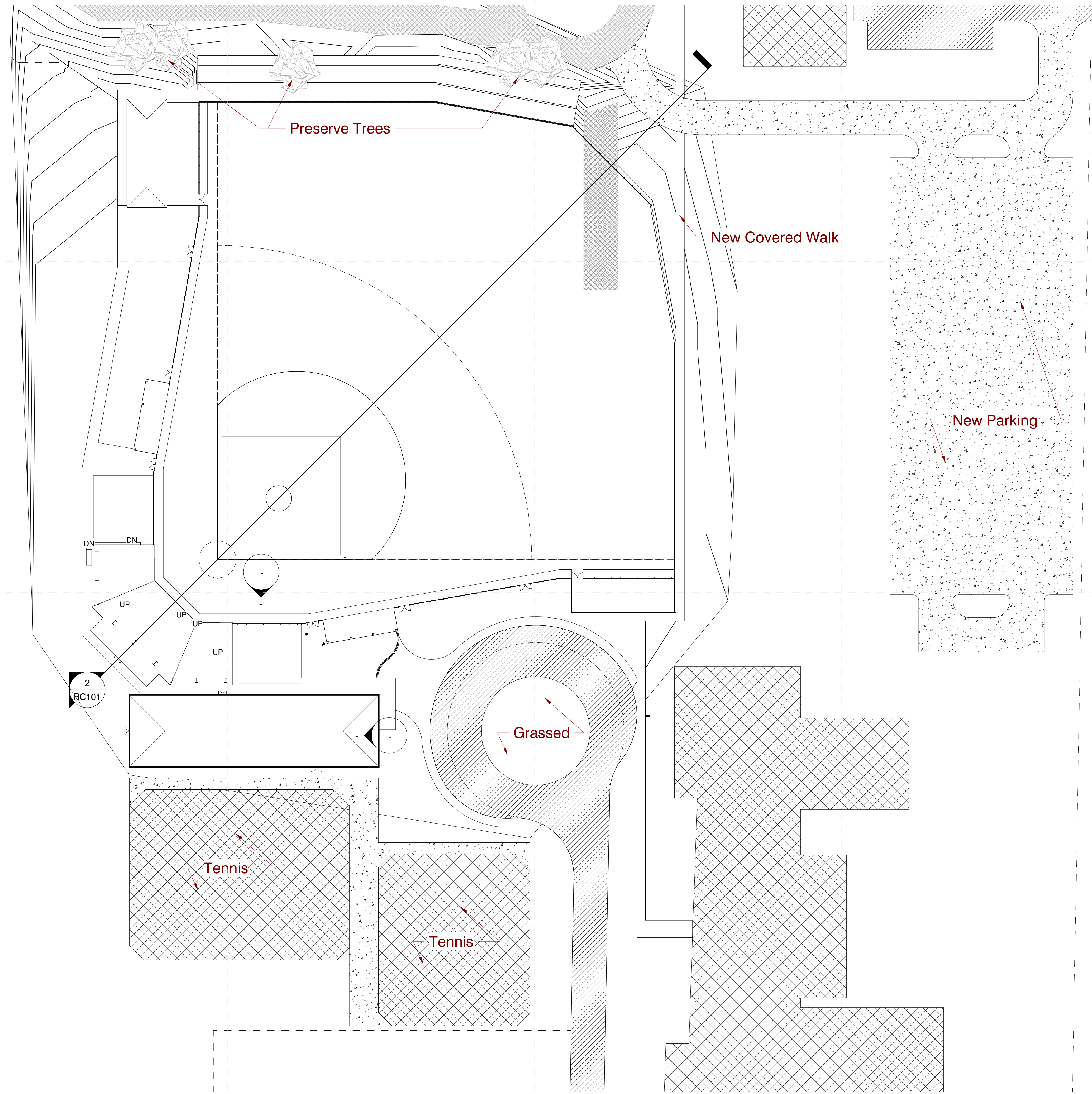
C:\Users\pmpur\Documents\22034_Meridian High Athletics_paulpusev\220HY.rvt 10/14/2022 1:07:36 PM



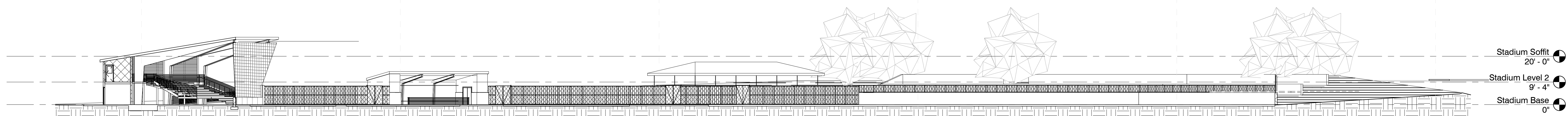
Meridian School District
Meridian, MS

Schematic
Design

Project No	22034
Date	November 8, 2022
Revisions	Rev Date



1 Site Layout
1" = 40'-0"



2 Site Cross Section