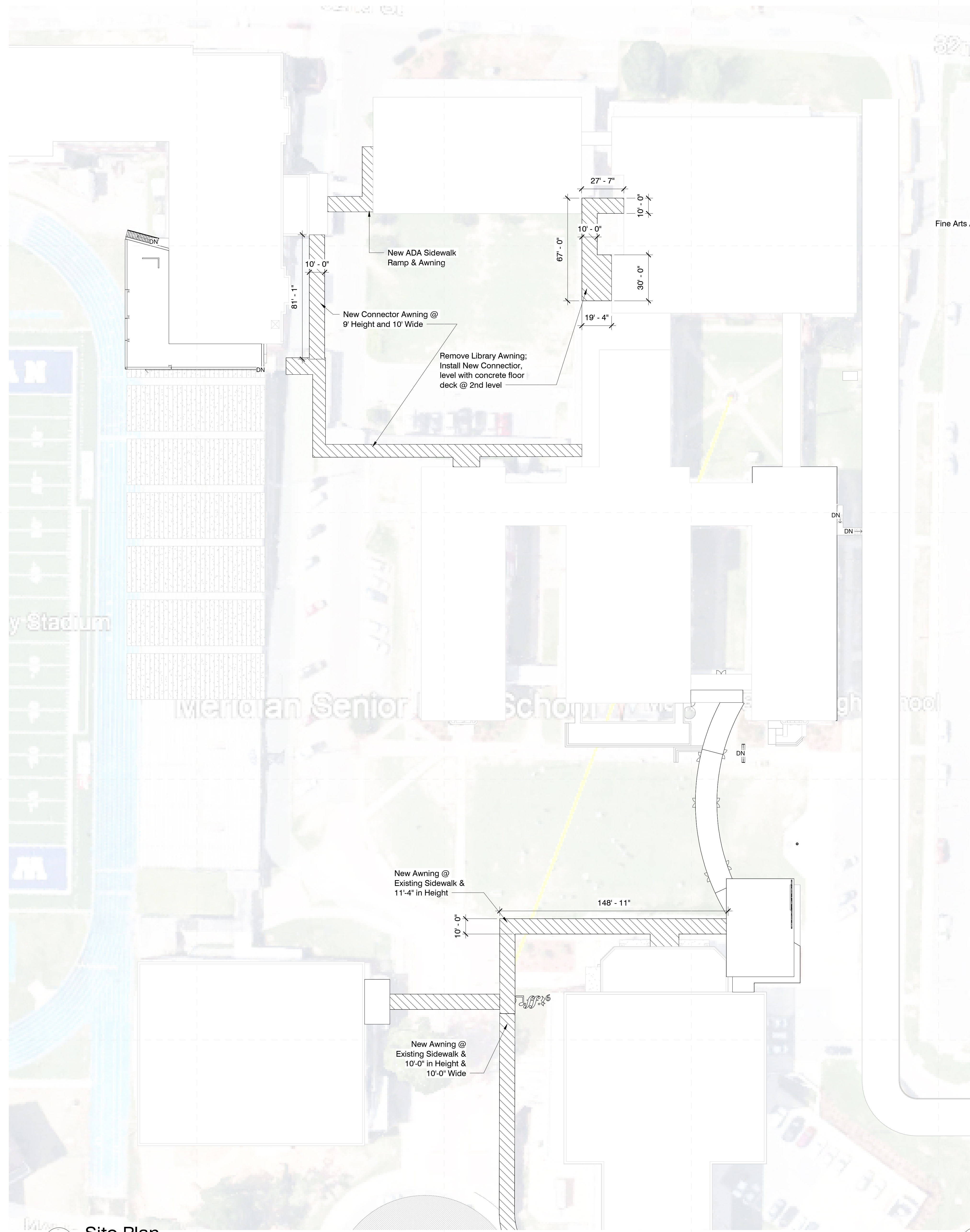


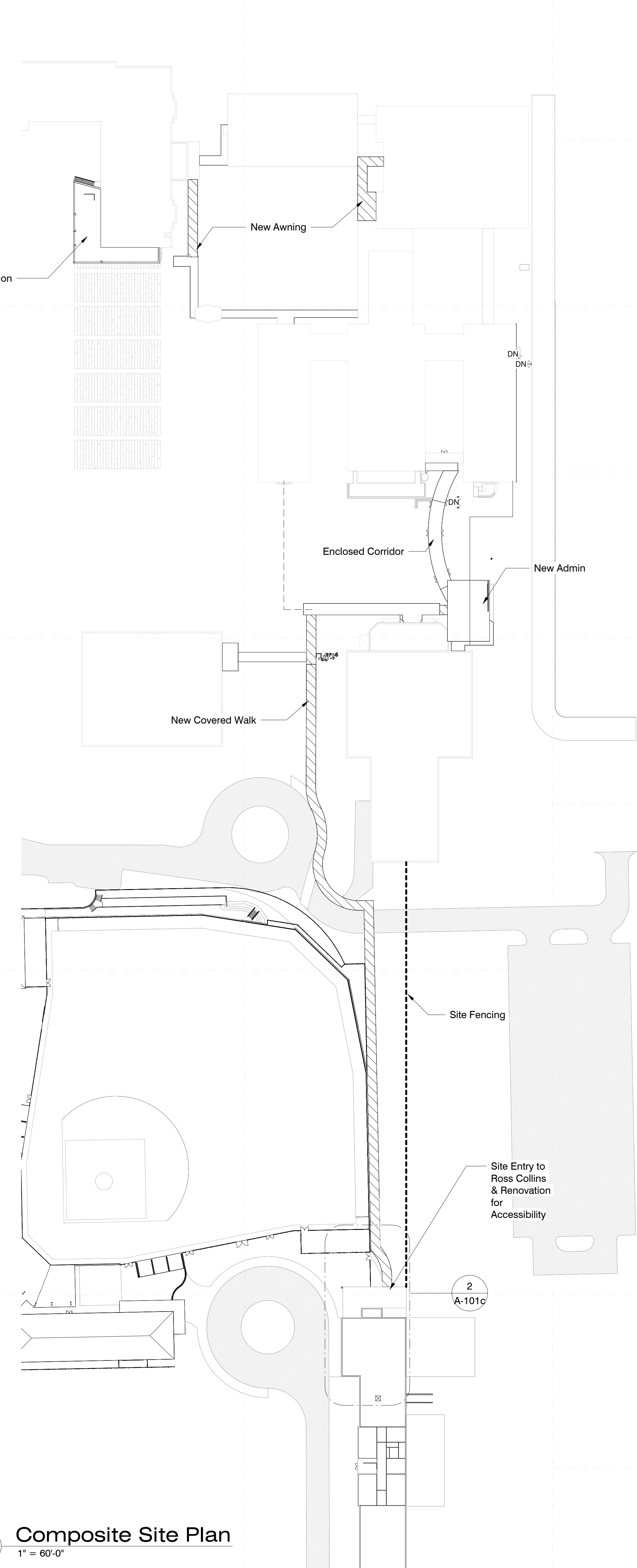
**Meridian High School**  
2320 32nd Street, Meridian, MS 39305

Design Development

Project No	22034.02
Date	November 8, 2022
Drawn	PPu
Checked	RBI
Revision #	Date
SD	1 11/8/22

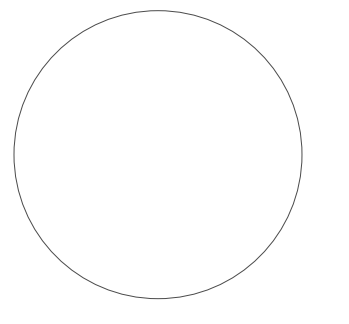


**1 Site Plan**  
1" = 30'-0"



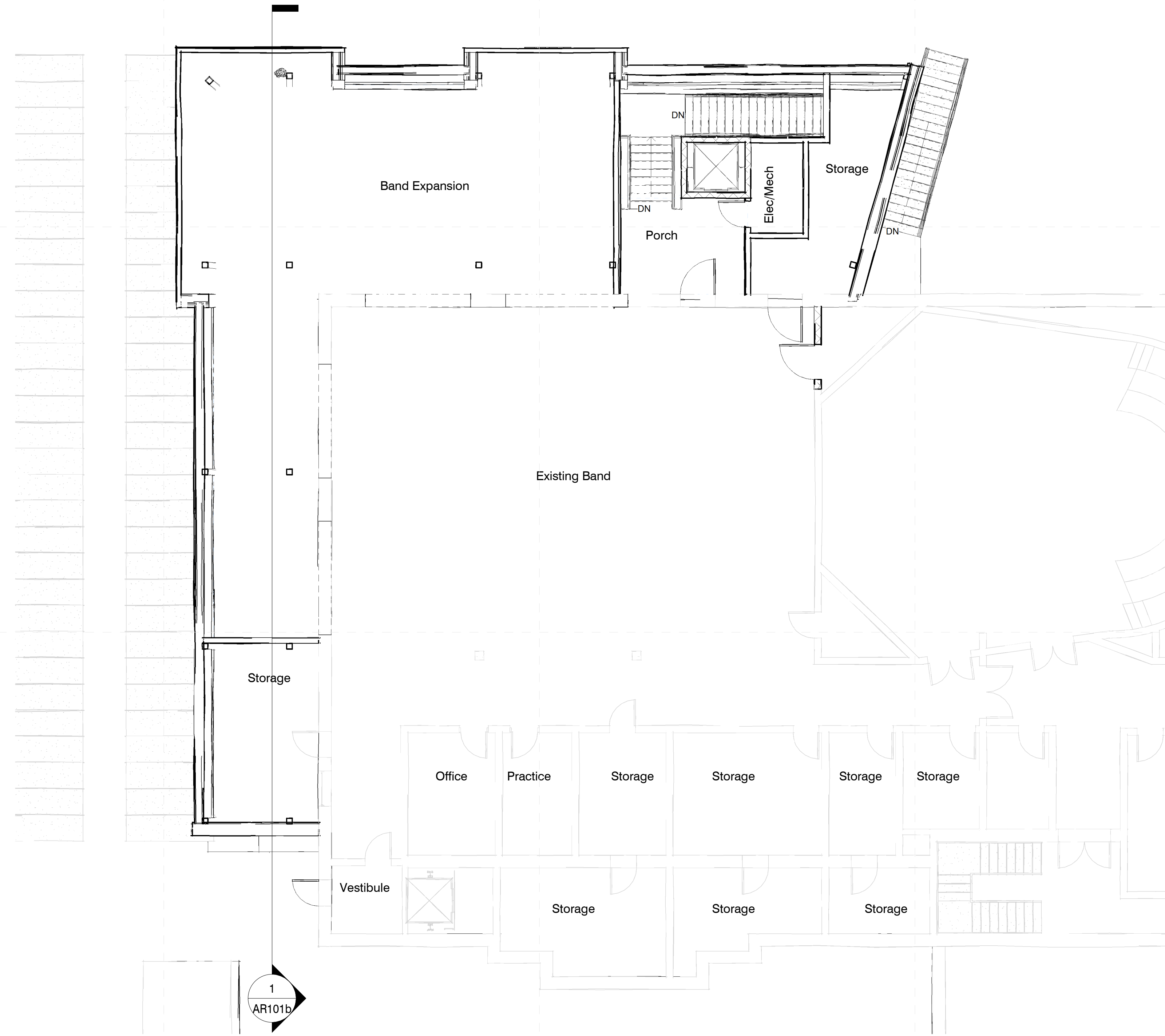
**2 Composite Site Plan**  
1" = 60'-0"





DALE BAILEY  
AN ASSOCIATION

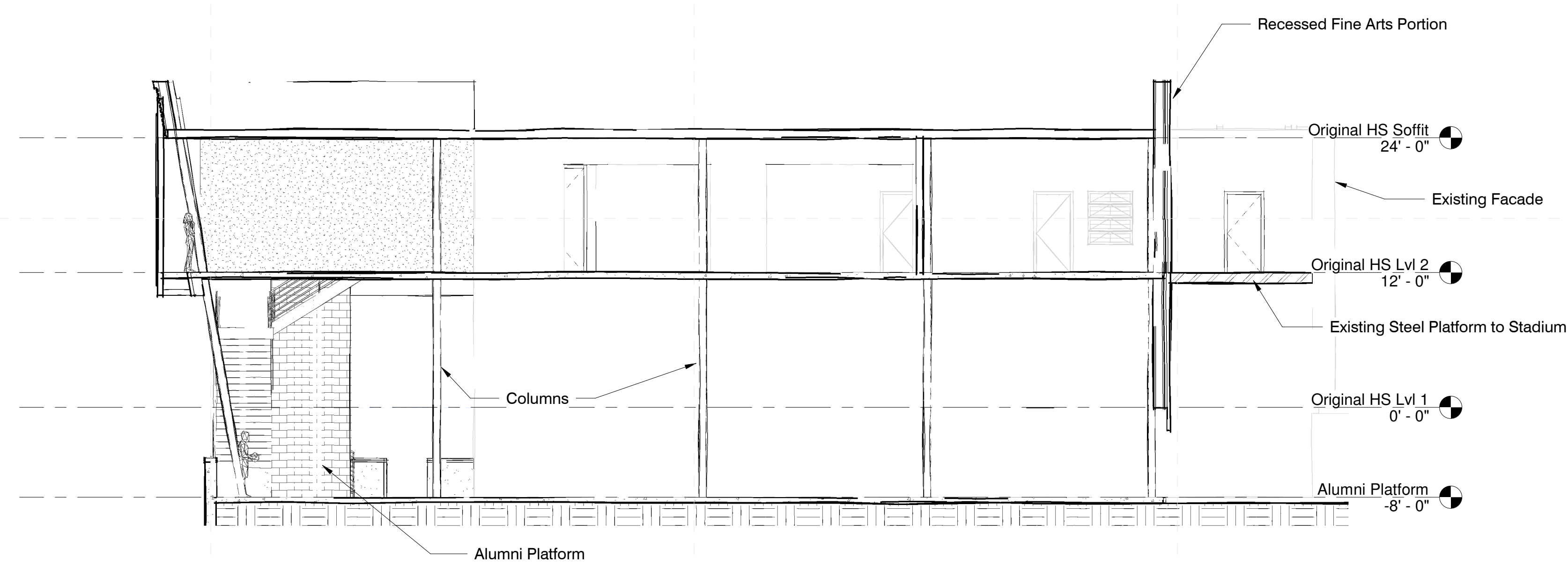
Meridian School District



2 Sketch Fine Arts Floor Plan - Level 2  
1/8" = 1'-0"



Existing View



1 Sketch - Section at Fine Arts  
1/8" = 1'-0"

Meridian High School  
2320 32nd Street, Meridian, MS 39305

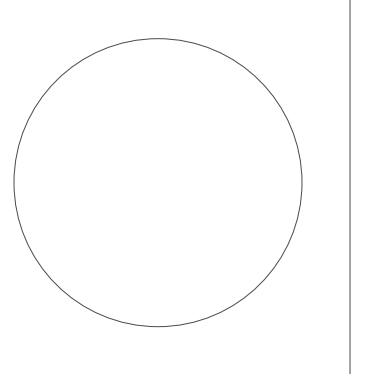
Design  
Development

Project No	22034.02
Date	February 7, 2023
Drawn	PPu
Checked	RBI
Revision	# Date

AR101b

Presentation Sheet





**Meridian School District Bond Issue**  
Northwest Middle: 32nd Street, Meridian, MS

Schematic Design

Project No	21097
Date	Nov 8, 2022
Drawn	Author
Checked	Checker
Revision #	Date

**AR101b**

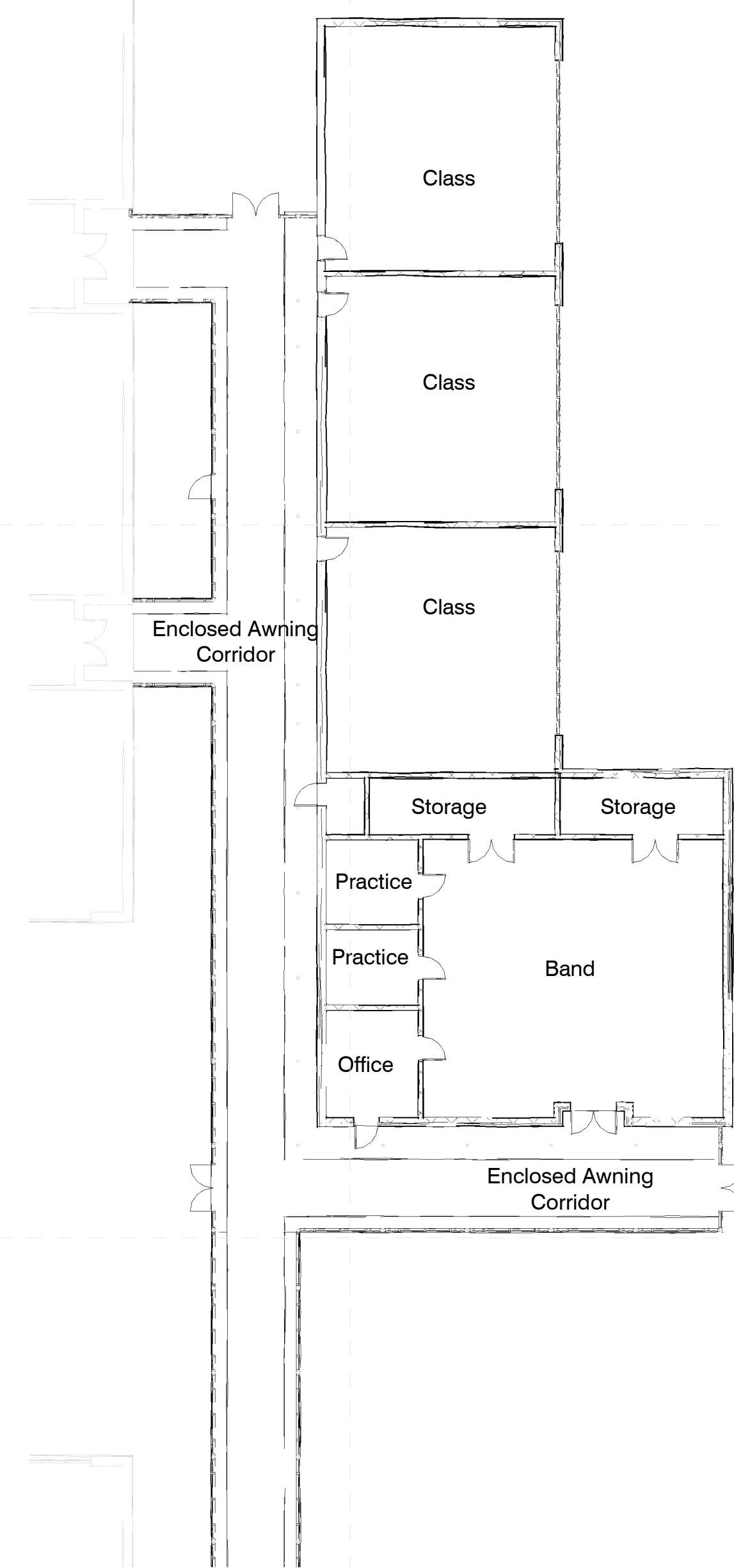
Presentation Sheet



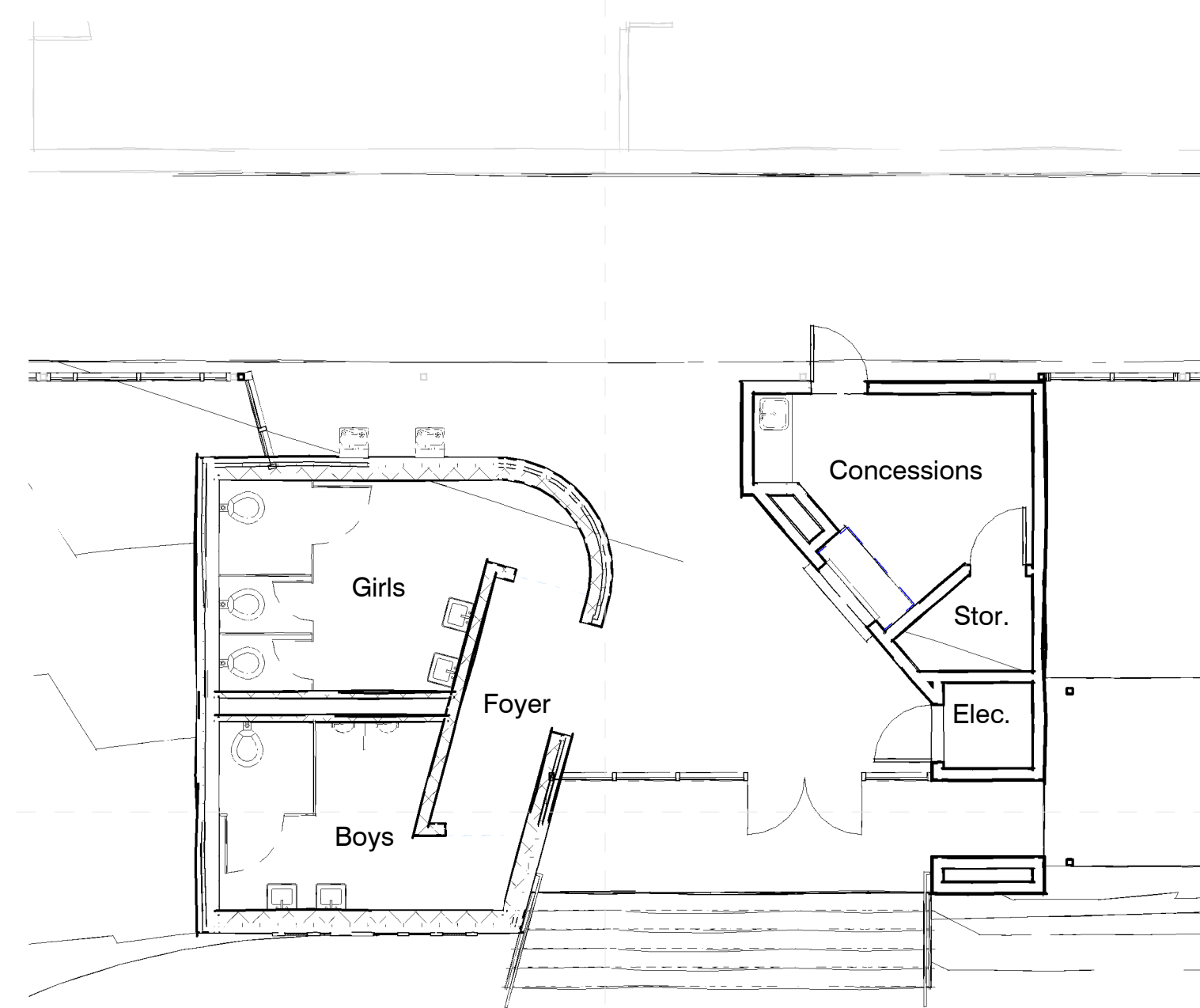
**1 Sketch - Admin Entry Floor Plan**  
1/8" = 1'-0"



1



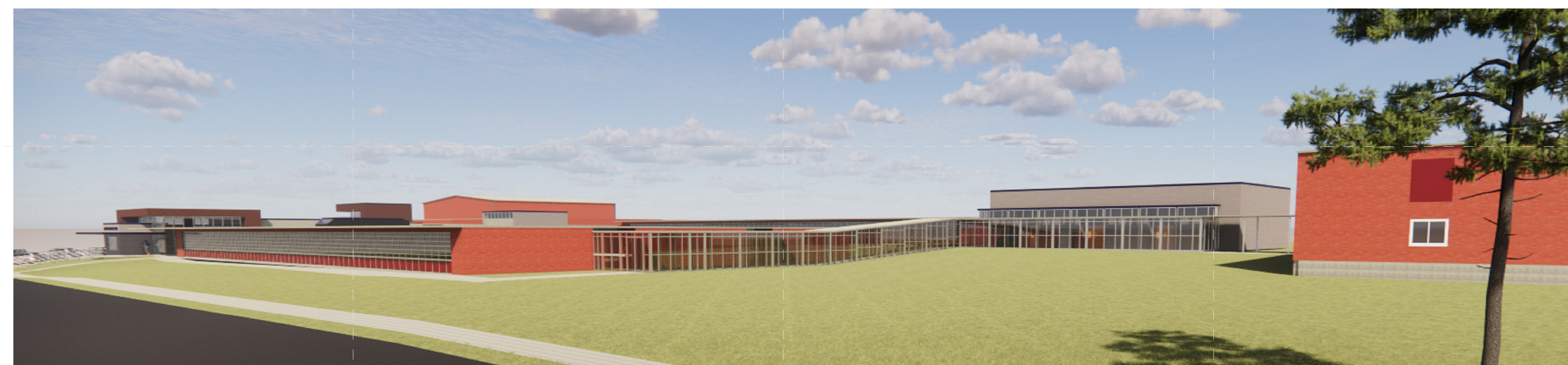
**4 Sketch - New Class Addition Floor Plan Small**  
1/16" = 1'-0"



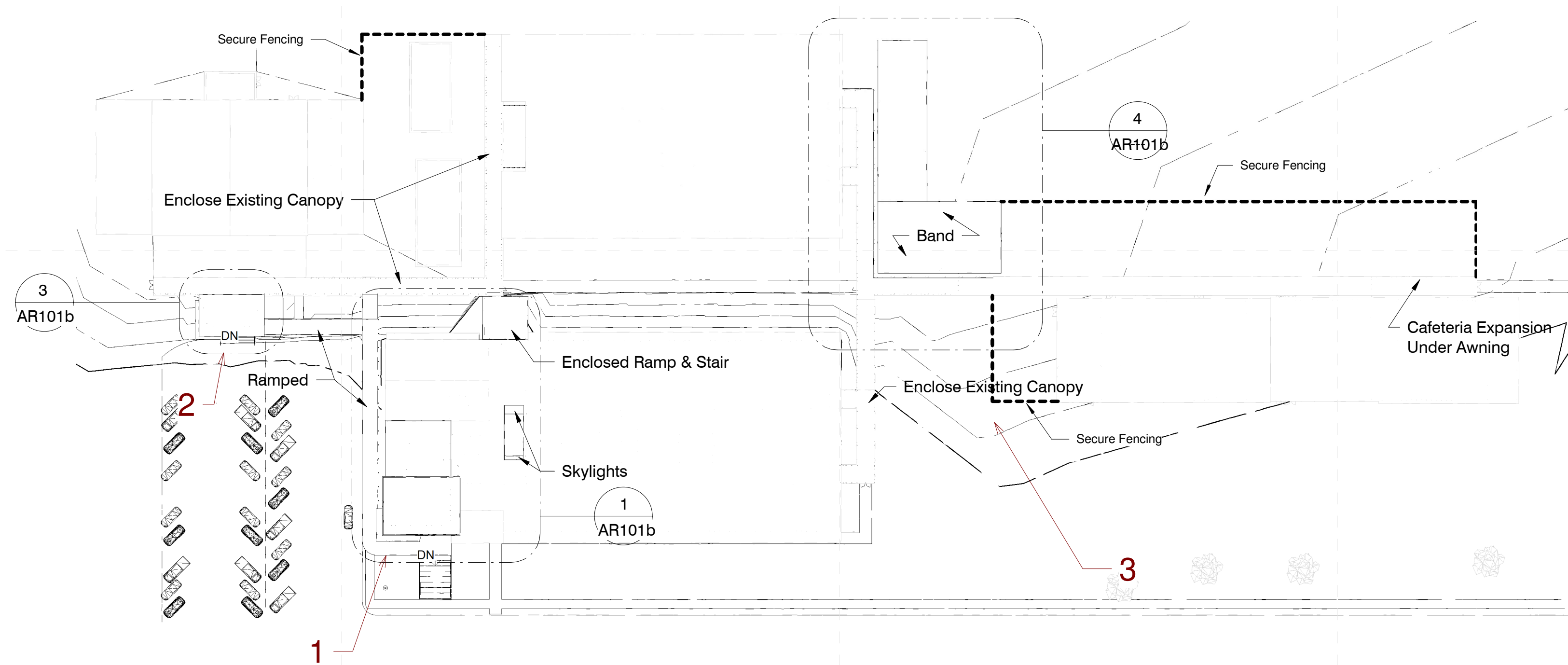
**3 Sketch - Gym Entry Floor Plan**  
1/8" = 1'-0"



2



3



**2 Sketch Composite Floor Plan - New**  
1" = 60'-0"

2/7/2023 3:37:27 PM C:\Users\pmpur\Documents\22034 Northwest Middle\_paurpuren\220HY.rvt



**Meridian School District Bond Issue**  
Magnolia Middle: 24th Street, Meridian, MS 39301

Design Development

Project No	21097
Date	May 20, 2022
Drawn	Author
Checked	Checker
Revision #	Date

RA101a

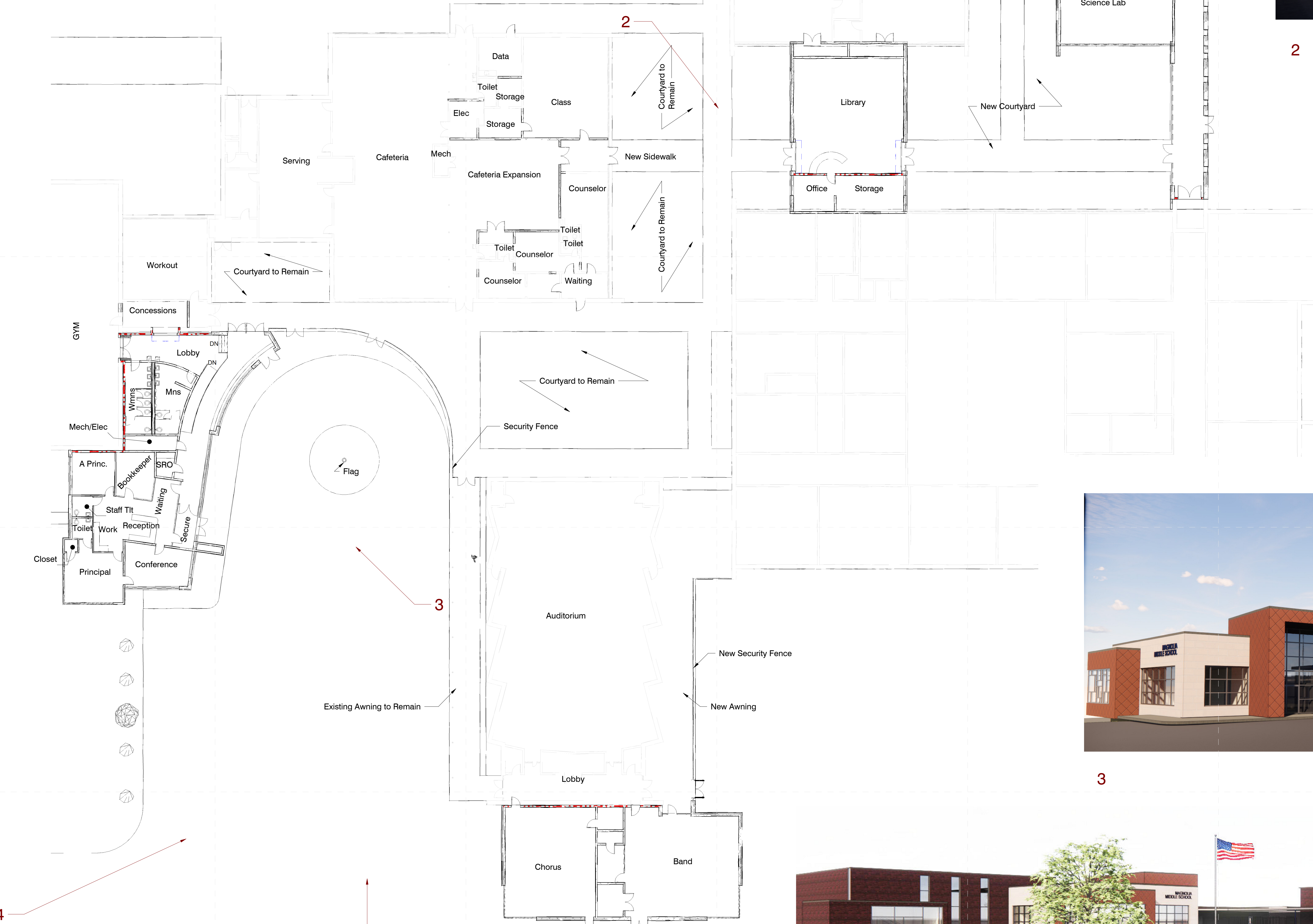
Presentation Sheet



1



2



4

**1 Sketch - Floor Plan**  
1/16" = 1'-0"

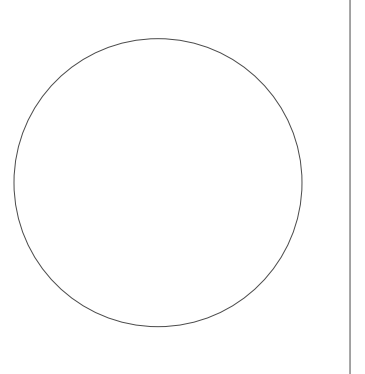


3



4





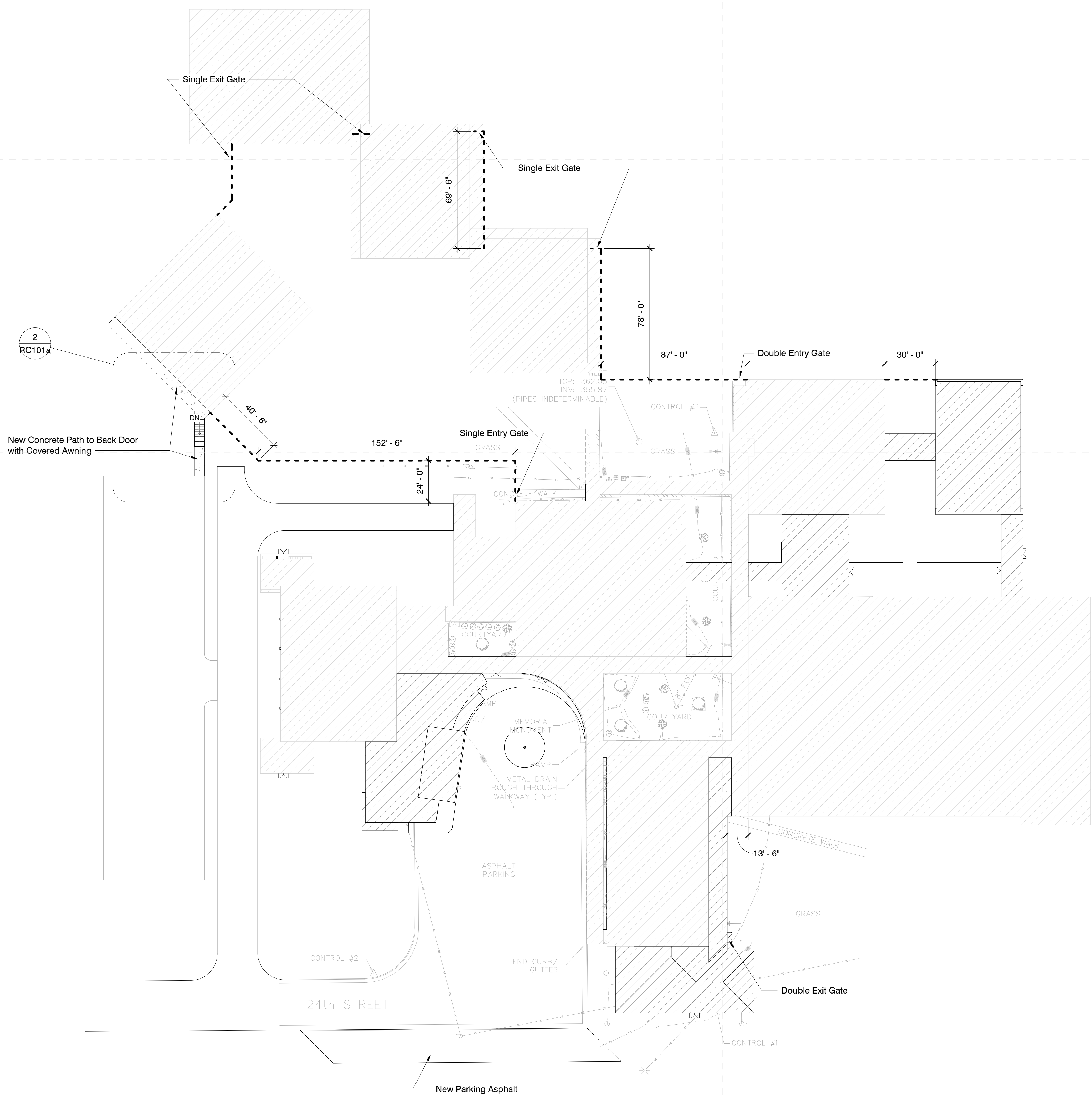
**Meridian School District Bond Issue**  
Magnolia Middle: 24th Street, Meridian, MS 39301

Design Development

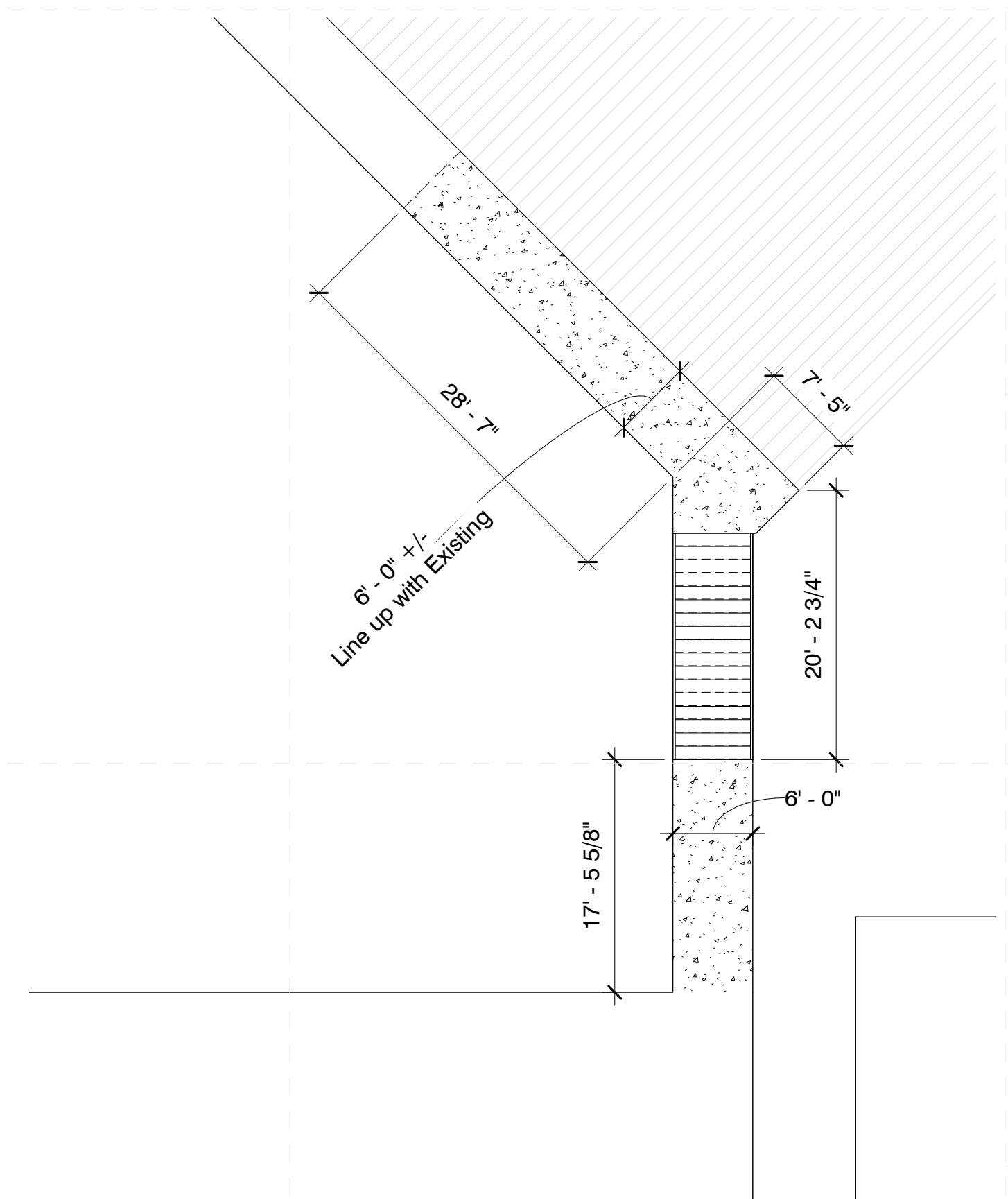
Project No	21097
Date	May 20, 2022
Drawn	PPu
Checked	RBI
Revision #	Date
SD 1	11/8/22

**General Site Notes**

1. All grassed areas shall be graded to drain to the appropriate inlet or slope to ensure positive drainage away from the building
2. All downspouts and boots to be connected to subsurface drainage. See Civil drawings.
3. Heavy Dashes lines indicate 8' Tall Vinyl Coated Chain Link Fence.
4. All Gates Shall be Equipped with panic hardware devices.



**1 Composite Site Plan**  
1" = 30'-0"



**2 Covered Walk at Parking**  
1" = 10'-0"

2/7/2023 7:36:40 AM C:\Users\pmpur\Documents\22034 Magnolia Middle\_paulpurser\220HY.rvt