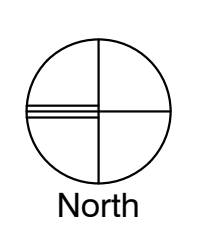


- Legend**
- Administration
  - Cafeteria Expansion
  - Circulation
  - Classrooms
  - Electrical / Mechanical
  - Restrooms
  - Storage
  - Existing Building to Remain

**1** Presentation Plan  
1" = 30'-0"



3/10/2022 10:22:36 AM C:\Users\chancestokes\Documents\21081.02 Gentry High School\_ChanceStokes.rvt

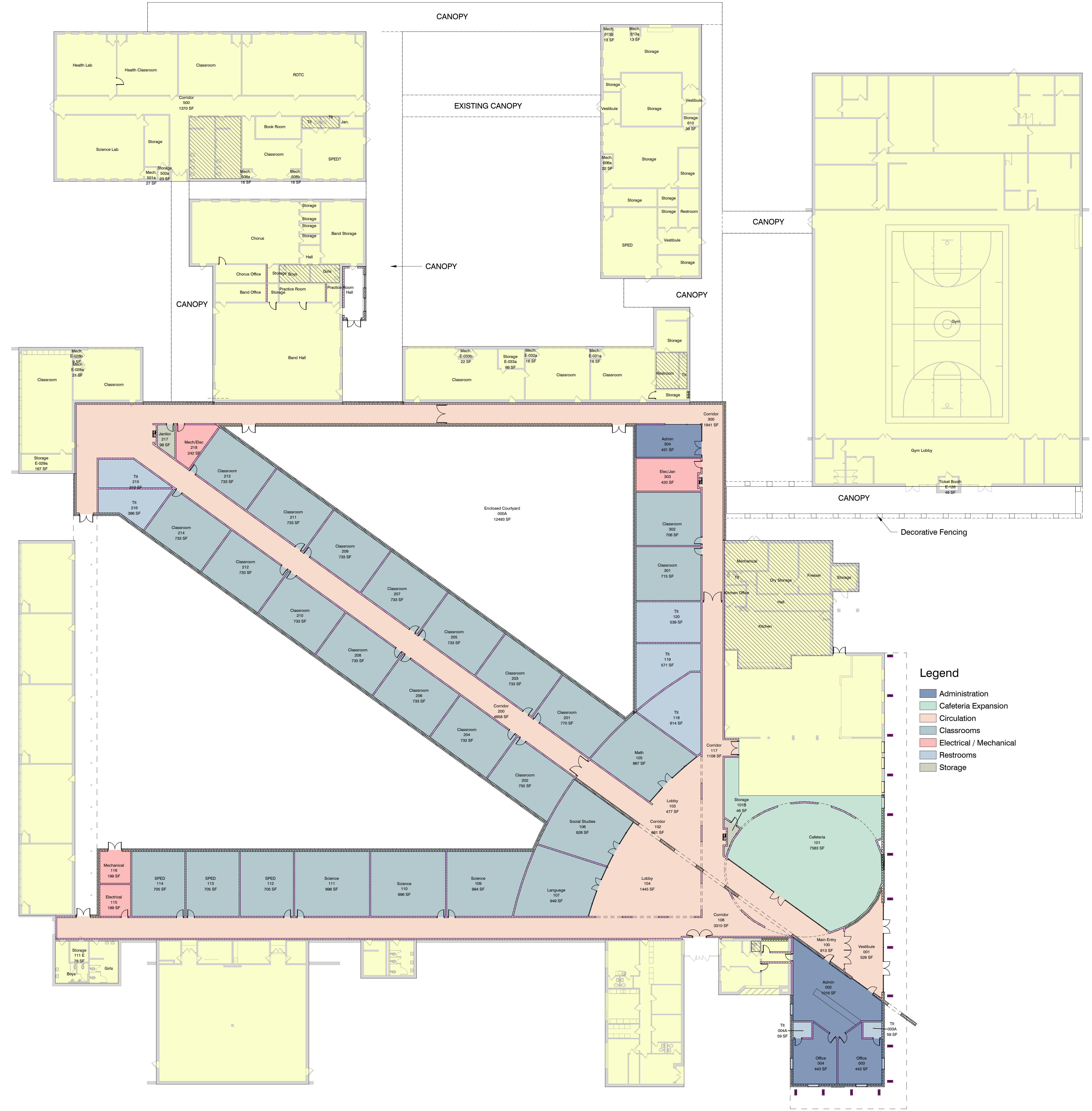
Not For Construction

Sunflower County Consolidated School District Bond Issue  
**21081.02 Gentry High School**  
Indianola, MS



Design Development  
Project No 21081.02  
Date February 1, 2021  
Revisions Rev Date

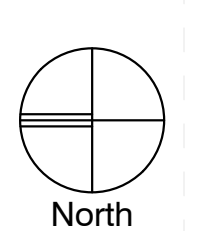
PR-2  
Composite Plan



- Legend**
- Administration
  - Cafeteria Expansion
  - Circulation
  - Classrooms
  - Classrooms
  - Electrical / Mechanical
  - Restrooms
  - Storage

3/10/2022 10:20:56 AM C:\Users\chancestokes\Documents\21081.02 Gentry High School\_ChanceStokes.rvt

**1 Presentation Composite Plan**  
1" = 20'-0"



Architects

One Jackson Place 250  
188 East Capitol Street  
Jackson, MS 39201  
p 601.352.5411

201 Park Court Suite B  
Ridgeland, MS 39157  
p 601.790.9432

161 Lameuse St. Suite 201  
Biloxi, MS 39530  
p 228.374.1409

dalebaileyplans.com

**Not For  
Construction**

Sunflower County Consolidated School District Bond Issue  
**21081.02 Gentry High School**  
Indianola, MS

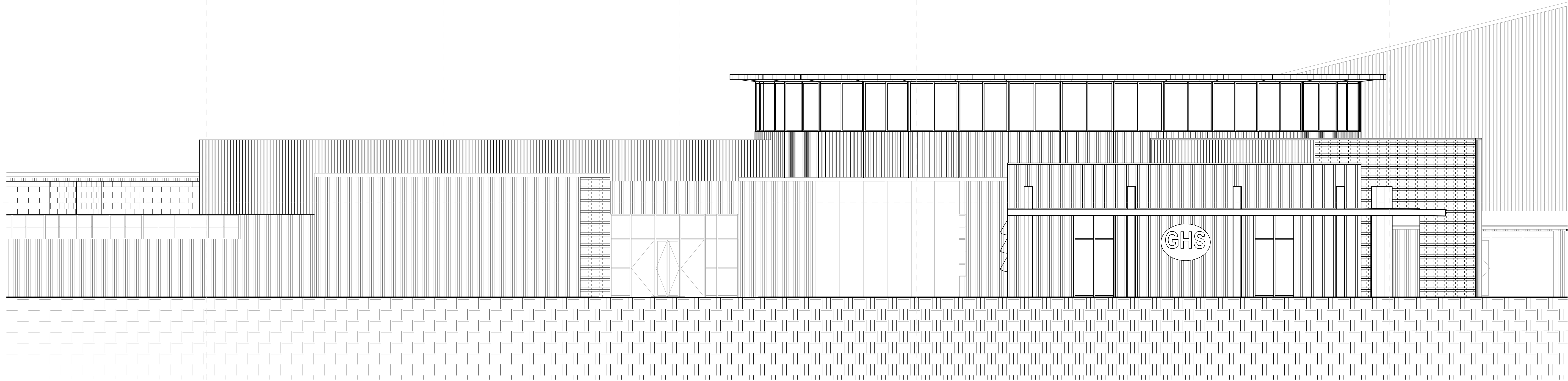


Design  
Development

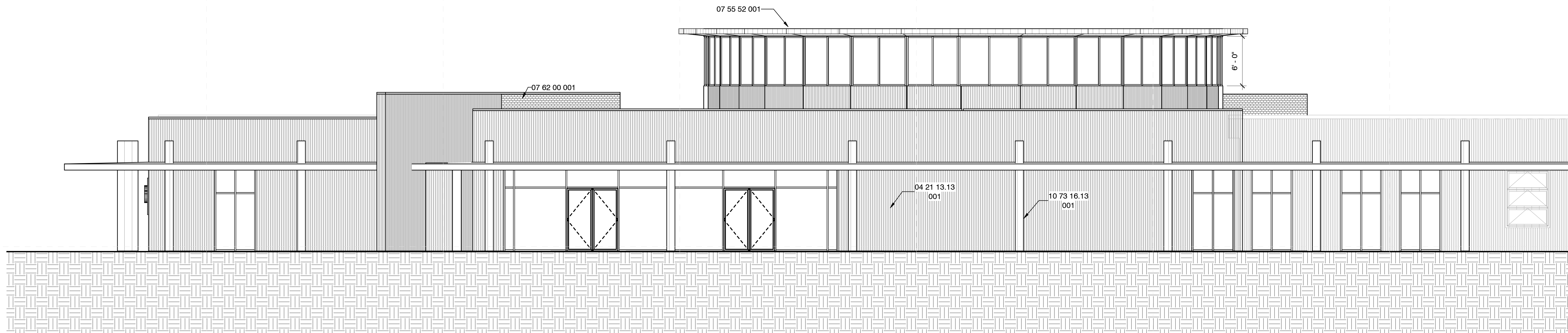
Project No	21081.02
Date	February 1, 2021
Revisions	Rev Date

**A-202b**

Exterior Elevations



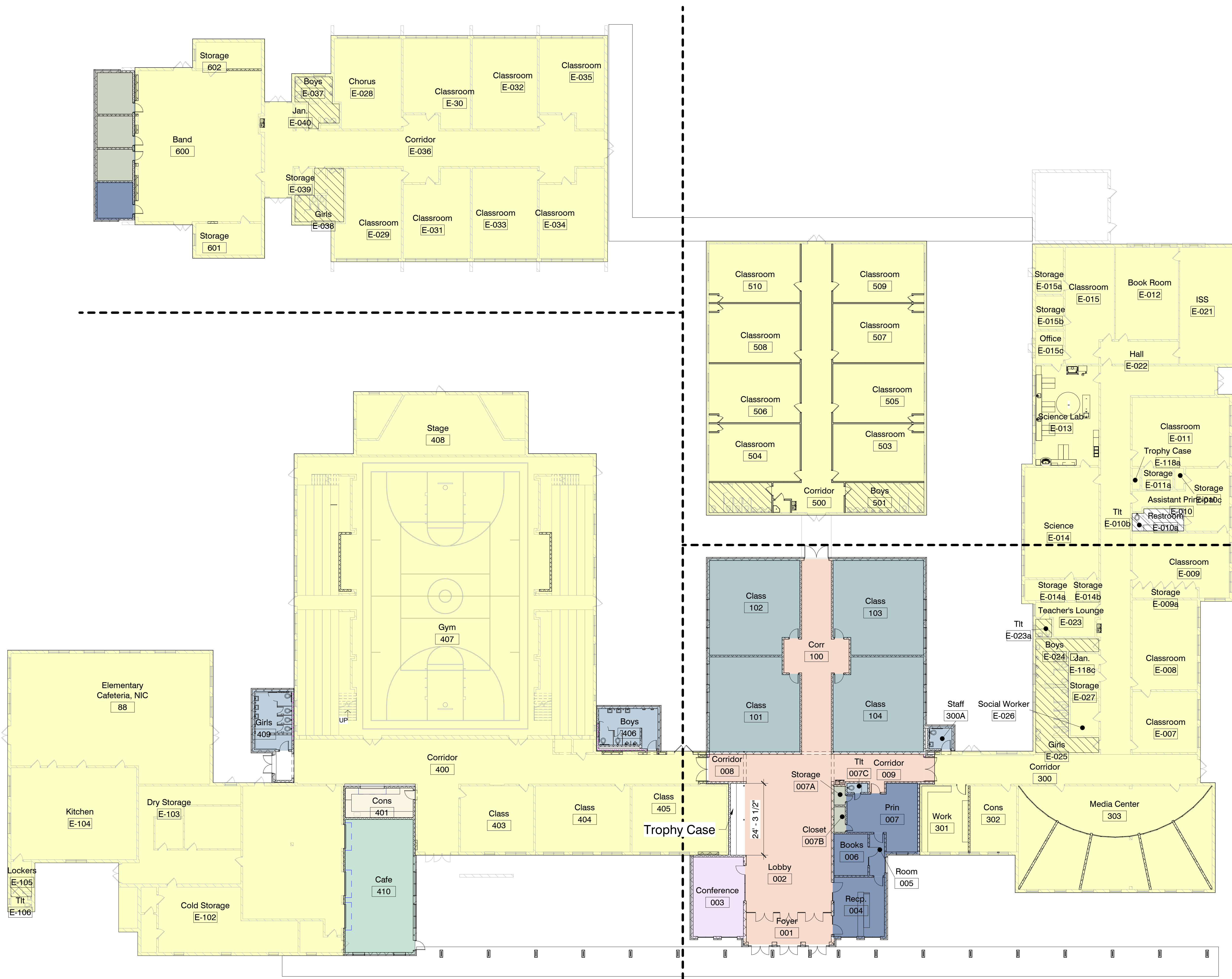
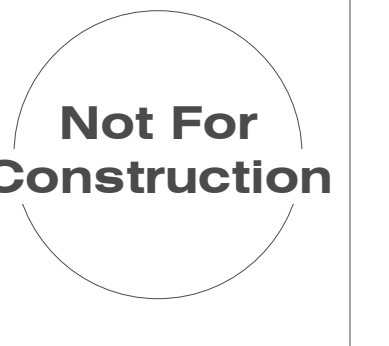
**1 Enlarged West Elevation**  
3/16" = 1'-0"



**2 Enlarged South Elevation**  
3/16" = 1'-0"

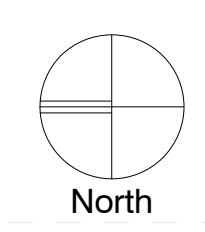
**Specific Notes**

- 04 21 13.13 001 Install Brick Veneer Masonry to match existing; include brick ties @ 32" vertically & horizontally
- 07 55 52 001 Install Modified Bituminous Protected Membrane Roofing
- 07 62 00 001 Cap wall end with prefinished flashing trim prior to finish tile install; overlay trim with tile
- 10 73 16.13 001 New Prefinished Aluminum Canopy with Matching Metal Panel Columns



- Department Legend**
- Admin.
  - Cafeteria
  - Circulation
  - Classroom
  - Concessions
  - Custodial/BOH
  - Gym
  - Media Center
  - Multi-Use
  - Restroom
  - Storage

**1** Presentation Composite Plan  
1/16" = 1'-0"



3/10/2022 10:31:25 AM C:\Users\chancestokes\Documents\21081.01 Thomas Edwards High School\_ChanceStokes.rvt

**Not For Construction**

Sunflower County Consolidated School District Bond Issue  
**21081.01 Thomas Edwards High School**  
Ruleville, MS



Schematic Design

Project No	21081.01
Date	11.30.21
Revisions	Rev Date

**A-200a**

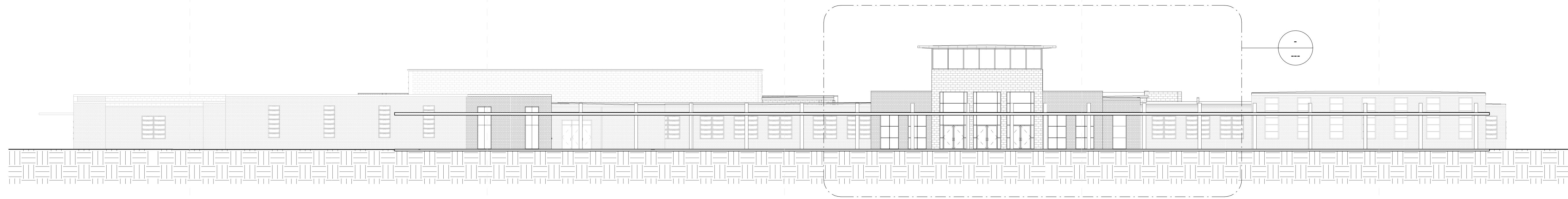
Exterior Elevations

**General Elevation Notes**

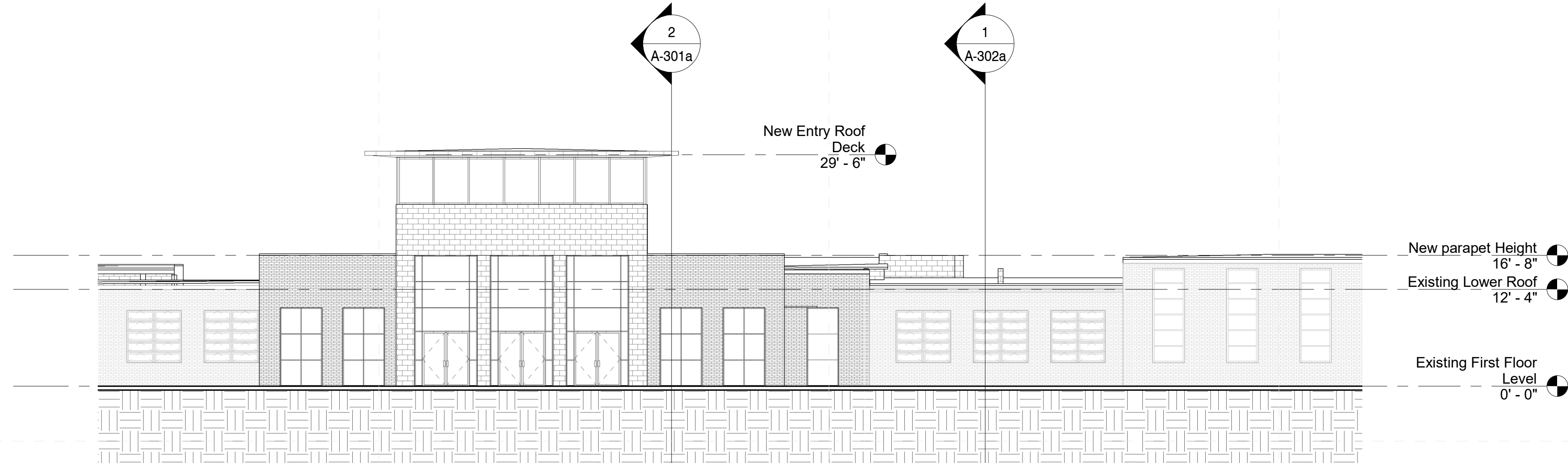
1. Brick Contraction Joints (CJ) in the veneer are to be located to the nearest veneer coursing. See structural drawings for contraction joint details and locations in CMU support wall.
2. Expansion Joint (EJ) and Contraction Joint material should match grout colors as selected by architect. Control Joints are required between brick and architectural precast concrete lintels and GFRC Cornice to accommodate expansion and contraction variations.
3. ALL downspouts to grade to have cast metal boots and be connected to sub-surface drainage system to drain water away from building. See Civil for drainage pipe location, routing and sizes. Downspouts that discharge onto lower roofs to have splashblocks to protect the roofing surface.

**Specific Notes**

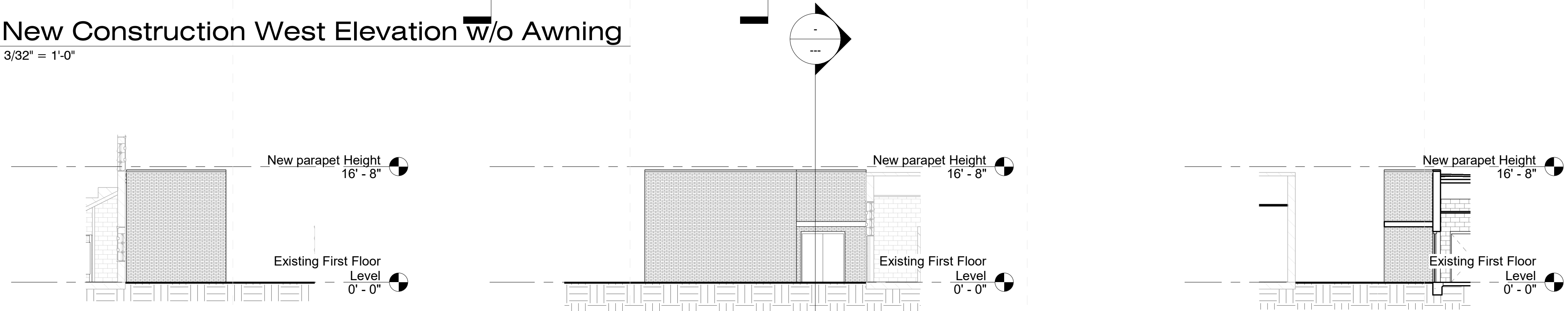
- 07 61 00 007 Prefinished metal cap @ all parapet walls; wrap roofing up and over parapet wall and conceal with cap



**1 Overall West Elevation**  
1/16" = 1'-0"



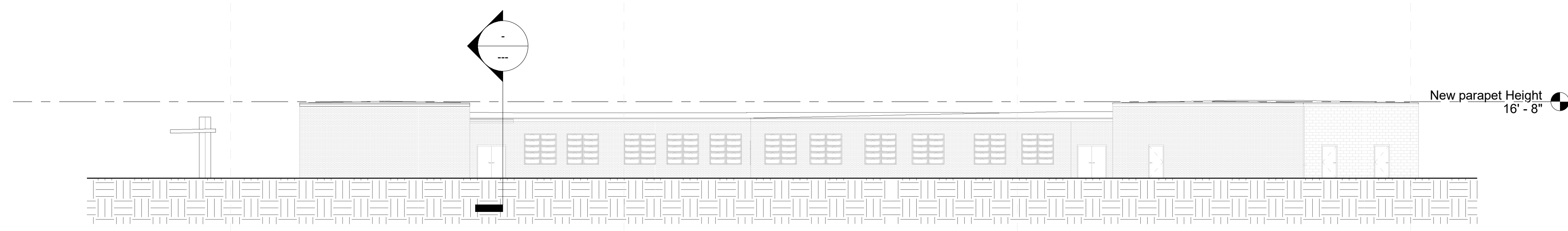
**2 New Construction West Elevation w/o Awning**  
3/32" = 1'-0"



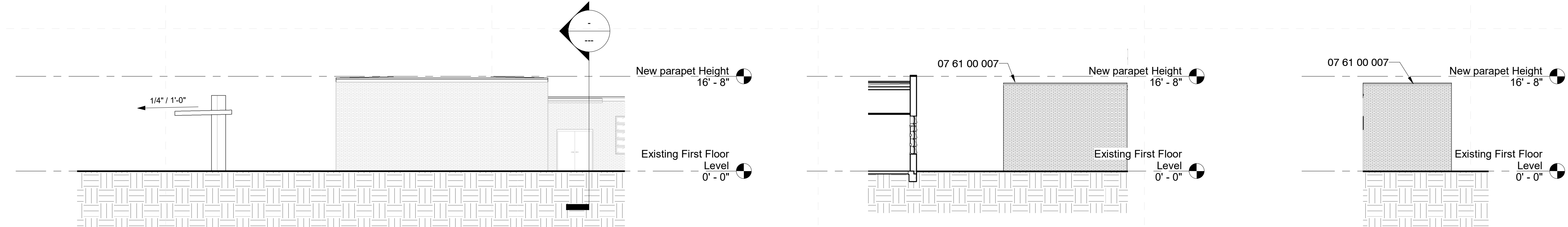
**7 Women's Toilet Addition - E**  
3/32" = 1'-0"

**8 Women's Toilet Addition - N**  
3/32" = 1'-0"

**9 Women's Toilet Addition - W**  
3/32" = 1'-0"



**3 Overall South Elevation**  
1/16" = 1'-0"



**4 New Construction South Elevation**  
3/32" = 1'-0"

**5 Men's Toilet Addition - E**  
3/32" = 1'-0"

**6 Men's Toilet Addition - S**  
3/32" = 1'-0"