

02 November 2022

21081 Sunflower Consolidated SD Phase II / Report Number 002

201 Park Court, Suite B  
Ridgeland, MS 39157  
P 601.790.9432  
F 888.281.0547

One Jackson Place, Suite 250  
188 East Capitol Street  
Jackson, MS 39201-2100  
P 601.352.5411  
F 601.352.5362

161 Lameuse Street, Suite 201  
Biloxi, MS 39530  
P 228.374.1409  
F 228.374.1414

Contract Trash Commercial Contractors, Inc.

Date / Time 25 October 2022 / 12:00 PM

Weather / Temp Clear / 71 ° F

Est % Complete 1%

Sched Conformance +/- 00 days

Work in Progress Field Verification

Present at Site Keith Graham, Thrash  
Collin Chandler, Thrash  
Paul Purser, DBA

Observations On site at Thomas Edwards, I noted temporary construction fence has been erected. A storage container has been located near the project signage. This fencing is not secured but also construction has not begun. When demo begins, this fencing should be maintained and secured, always.

At Gentry, I entered the main courtyard. New work has been performed at the existing north building to remain. The concrete awning has been removed by a clean saw cut.

I walked the west hall to remain. Some demo work has been performed in the toilet rooms connected to this hall. There is some damage to finished in these rooms that are to remain and will need to be repaired by the contractor.

Items to Verify None

Action Required None

Report By:



Paul Purser, Architect  
Dale | Bailey, an Association

cc: Trey Jacobs / Keith Graham / Collin Chandler / David Arendale (Thrash)  
Miskia Davis / Lillie Robey / Marvin Hawkins (SCCSD)  
Errick Lakes / Edmond Williams (SCCSD)  
Gary Bailey / Jason Stewart / Mark Pipper (BPM)  
Russ Blount / Darryl Dilmore / Wanda Elliott (DBA)  
Tom Schaeffer / Will Grigg / Wiliam Knight (M)  
Jason Kackley / Al Guynes (GSK)  
Chris Green / Larry Scott (TPS)  
Lake Baird / Wesley Jacobs (GE)



Figure 1 – Construction Fencing



Figure 2 – Construction Fencing





Figure 3 – Construction Fencing not Secured



Figure 4 – Storage Container on Site at Edwards





Figure 5 – Contractor Signage



Figure 6 – Main Construction Entry to Yard





Figure 7 – Main Construction Entry to Yard



Figure 8 – Saw Cut Work at Building to remain





Figure 9 – Workers at Middle Yard



Figure 10 – Ongoing Service Work





Figure 11 – Ongoing Service Work



Figure 12 – Job Trailers





Figure 13 – East courtyard by Job Trailer



Figure 14 – Fixtures removed per Alternate 8





Figure 15 – Ceiling Grid Damage at Grid to remain



Figure 16 – Hall to remain





Figure 17 – Damage to unprotected Finishes to remain shall be repaired by contractor



Figure 18 – Damage to unprotected Finishes to remain shall be repaired by contractor





Figure 19 – Damage to unprotected Finishes to remain shall be repaired by contractor

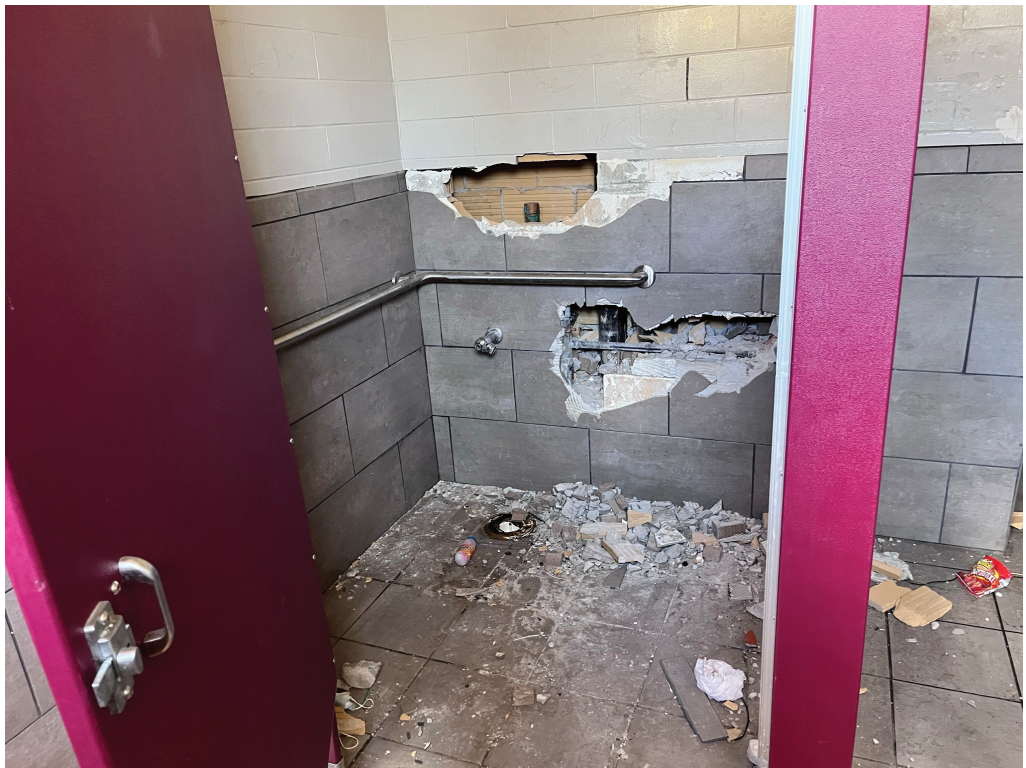


Figure 20 – Damage to unprotected Finishes to remain shall be repaired by contractor





Figure 21 – Temporary posts Installed



Figure 22 – Temporary posts Installed