

Architect's Field Report

201 Park Court, Suite B
Ridgeland, MS 39157
P 601.790.9432
F 888.281.0547

18 September 2020

18059-AOI Academy of Innovation / Report Number 046

One Jackson Place, Suite 250
188 East Capitol Street
Jackson, MS 39201-2100
P 601.352.5411
F 601.352.5362

Contract Century Construction
Date / Time 16 September 2020 / 4:00 PM
Weather / Temp Partly cloudy / 86 ° F
Est % Complete 60%
Sched Conformance + 68 days
Work in Progress Mechanical Installation
Drywall Finishing
Exterior Panel Installation
Exterior Stucco Installation

161 Lameuse Street, Suite 201
Biloxi, MS 39530
P 228.374.1409
F 228.374.1414

Present at Site Joey Moore, CC
Paul Purser, DBA

Observations Arriving on site, I noted Steel Paneling was nearing completion at the North façade of the east side of the building. One worker on a man lift was trimming out the final few panels.

Stucco work at the same location has been completed and appears smooth and straight. Workers has reassembled scaffold to the south corner of the east façade and have begun stucco work there.

Inside, major work is being done on drywall installation and finishing. At the auditorium, finishers are sanding drywall for final finish. At the central portion of building, installers are laying out and fitting drywall.

At the bottom floor, metro mechanical workers are fitting duct and continuing install of mechanical systems.

Items to Verify None

Action Required None

Report By:

Paul Purser, AIA, LEED AP
Dale | Bailey, an Association

cc: Wilson Little / Joey Moore / Allison Wood (CC)
Chad Shealy / Shaquita Burke / Christi Kilroy (VWSD)
Gary Bailey / Jason Stewart / Mark Pippner (BPM)
Russ Blount / Will Commarato / Candy Failor (DBA)
Brandon McKay / Austin Newell (WGK)
Jason Kackley / Al Guynes (GSK)
Chris Green / Larry Scott (TPS)
Jerry Montgomery (SM)



Figure 1 – Metal Siding Installed



Figure 2 – Stucco Complete at Corner



Figure 3 – Corners appear Straight and of good workmanship



Figure 4 –Stucco at South Corner Ongoing



Figure 5 – HVAC Lines Installed



Figure 6 – Drywall Finishing is Ongoing



Figure 7 – Drywall Finishing is Ongoing



Figure 8 – Drywall Installation is Ongoing



Figure 9 – Drywall Installation is Ongoing



Figure 10 – Drywall Installation is Ongoing



Figure 11 – South Central Building Lobby Interior



Figure 12 – Exterior Courtyard Concrete Work



Figure 13 – Stage View from Exterior Courtyard

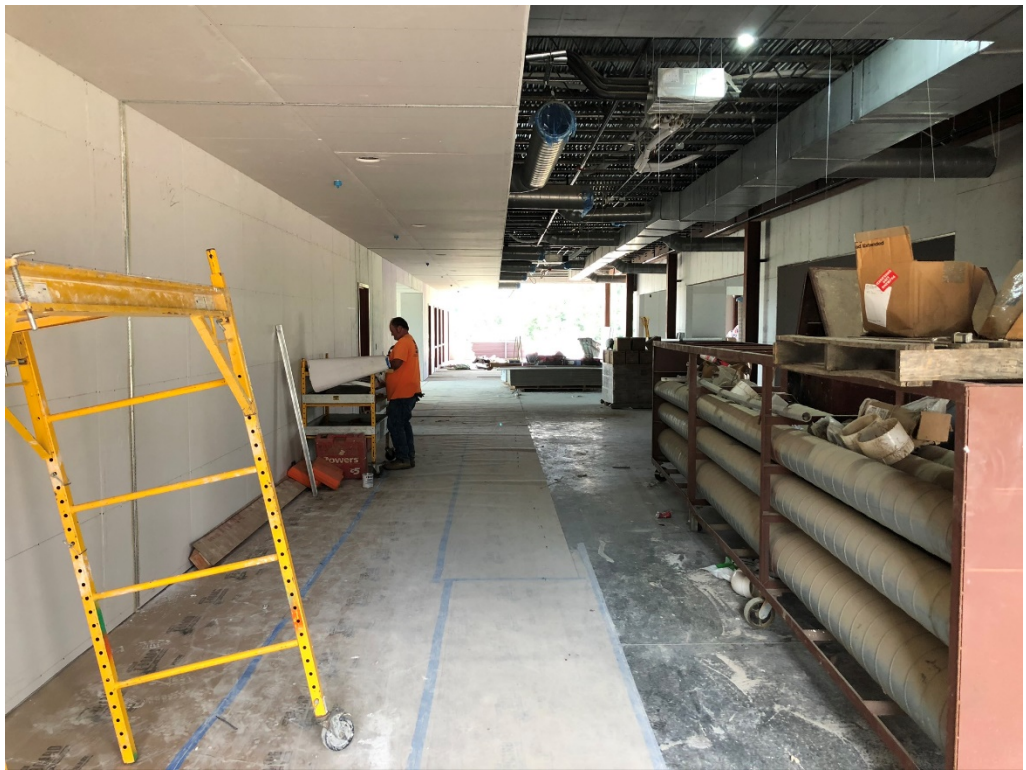


Figure 14 – Drywall Installation is Ongoing



Figure 15 – Versatile Teaching Space



Figure 16 – Tarp has Been Installed to Protect Large Multi-Story Stair Space



Figure 17 – Tarp has Been Installed to Protect Large Multi-Story Stair Space



Figure 18 –Auditorium Drywall Finishing is Ongoing



Figure 19 – Auditorium Drywall Finishing is Ongoing



Figure 20 – Mechanical Work at Cafeteria Kitchen