

Architect's Field Report

201 Park Court, Suite B
Ridgeland, MS 39157
P 601.790.9432
F 888.281.0547

05 August 2020

18059-AOI Academy of Innovation / Report Number 043

One Jackson Place, Suite 250
188 East Capitol Street
Jackson, MS 39201-2100
P 601.352.5411
F 601.352.5362

Contract Century Construction

Date / Time 04 August 2020 / 12:15 PM

Weather / Temp Clear / 88 ° F

Est % Complete 60%

Sched Conformance + 68 days

Work in Progress Aluminum Storefront Installation
Glass Installation
Plumbing Installation
Handrail Installation
Drywall Installation
Metal Panel Installation
Electrical Installation

161 Lameuse Street, Suite 201
Biloxi, MS 39530
P 228.374.1409
F 228.374.1414

Present at Site Paul Purser, DBA

Observations I arrived on site, noting continued work on several fronts. High wall Aluminum Storefront installation has begun and is ongoing at the Entry Vestibule. Also, glazers were on site installing glass at previously installed storefront framing. Inside, Electricians and plumbers were working throughout the North structure.

Drywallers were taking lunch in the gymnasium where up to 80% of drywall has been installed. In the east structure, drywall hanging appears near completion.

Welders were working in the main lobby installing handrail.

Items to Verify None

Action Required None

Report By:

Paul Purser, AIA, LEED AP
Dale | Bailey, an Association

cc: Wilson Little / Joey Moore / Allison Wood (CC)
Chad Shealy / Shaquita Burke / Christi Kilroy (VWSD)
Gary Bailey / Jason Stewart / Mark Pipper (BPM)
Russ Blount / Will Commarato / Candy Failor (DBA)
Brandon McKay / Austin Newell (WGK)
Jason Kackley / Al Guynes (GSK)
Chris Green / Larry Scott (TPS)
Jerry Montgomery (SM)



Figure 1 – Metal Siding Substrates Installed



Figure 2 – Aluminum Storefront at Entry Vestibule



Figure 3 – Aluminum Storefront in Progress



Figure 4 –Blocking Installed at Versatile Teaching Spaces



Figure 5 – Core Drills at 2nd Floor Bathroom

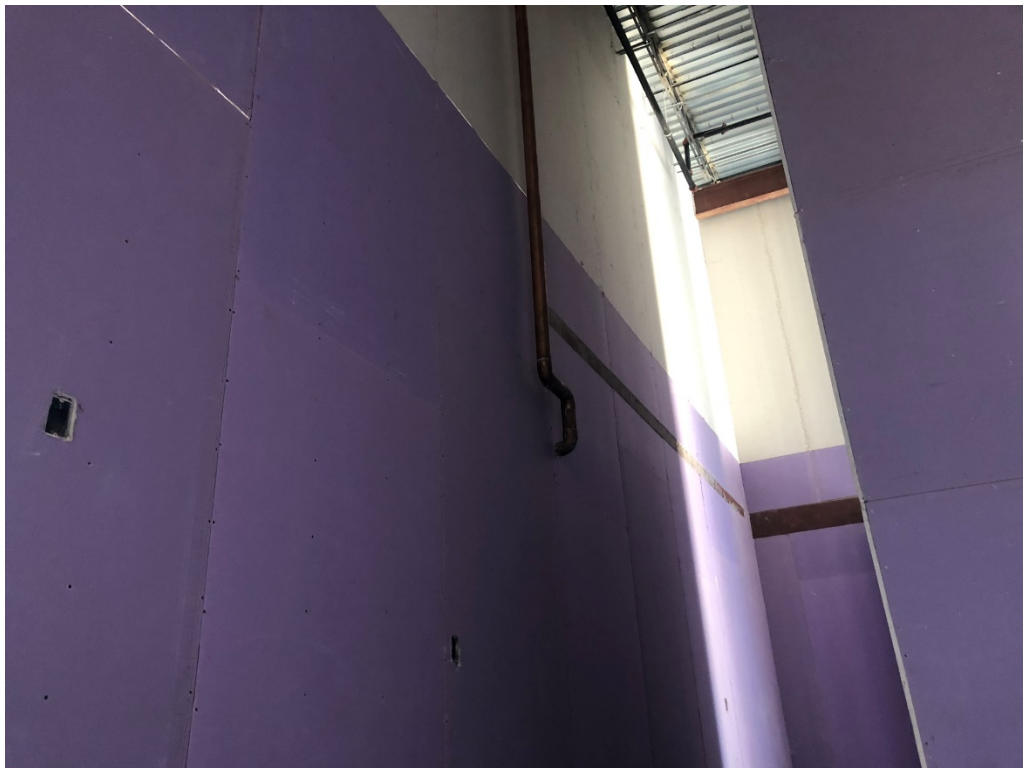


Figure 6 – Drywall Installed at Gym



Figure 7 – Drywall Reveal Installed at Gym



Figure 8 – Moveable Partitions Track Installed



Figure 9 – Lip at Main Stair and 3rd Floor (Recommendations to correct?)



Figure 10 – Handrail Work is Ongoing



Figure 11 – Installed Curved Handrail



Figure 12 – Asphalt Installed at Drive



Figure 13 – Mitered Corners at Metal Siding



Figure 14 – Metal Siding Install is Ongoing



Figure 15 – Welded Handrail Corner at Main Lobby



Figure 16 – Handrail Installation at Main Stair