

## Architect's Field Report

201 Park Court, Suite B Ridgeland, MS 39157 P 601.790.9432 F 888.281.0547	07 April 2020  18059-AOI Academy of Innovation / Report Number 030
One Jackson Place, Suite 250 188 East Capitol Street Jackson, MS 39201-2100 P 601.352.5411 F 601.352.5362	Contract Century Construction Date / Time 06 April 2020 / 11:30 AM Weather / Temp Overcast / 70 ° F Est % Complete 40% Sched Conformance + 71 days Work in Progress Gypsum Sheathing Installation Steel Joist Setting Mechanical & Plumbing Rough-INS
161 Lameuse Street, Suite 201 Biloxi, MS 39530 P 228.374.1409 F 228.374.1414	Present at Site Billy Burwell, CC Paul Purser, DBA  Observations I began my visit on the East end of the site. Plumbers were roughing in plumbing at toilets 118 & 119.  The central concrete slab was poured Friday and ponding is in use. There are a few rough patches (noted below) but overall, the pour looks good.  The erosion problem at the south Foundation wall has been addressed by pouring concrete into hole below the wall.  Gypsum Sheathing and Light gauge framing continues at the exterior of the west structure.
	Items to Verify None Action Required None
	Report By:

Paul Purser, LEED AP  
Dale | Bailey, an Association

cc: Wilson Little / Joey Moore / Allison Wood (CC)  
Chad Shealy / Shaquita Burke / Christi Kilroy (VWSD)  
Gary Bailey / Jason Stewart / Mark Pipper (BPM)  
Russ Blount / Will Commarato / Candy Failor (DBA)  
Brandon McKay / Austin Newell (WGK)  
Jason Kackley / Al Guynes (GSK)  
Chris Green / Larry Scott (TPS)  
Jerry Montgomery (SM)



Figure 1 – East Structure



Figure 2 – Waterproofing touch up needed where smeared



Figure 3 – Ponding Technique in use 4 days after pour



Figure 4 – Ponding Technique in use 4 days after pour



Figure 5 – North Section of New Slab



Figure 6 – Ponding Technique in use 4 days after pour



Figure 7 – Concrete @ North Column not troweled entirely smooth



Figure 8 – North Edge of Slab Not Troweled Smooth (near Stairwell)



Figure 9 – Large Stress Crack @ Column NW of Room “Principal 104”

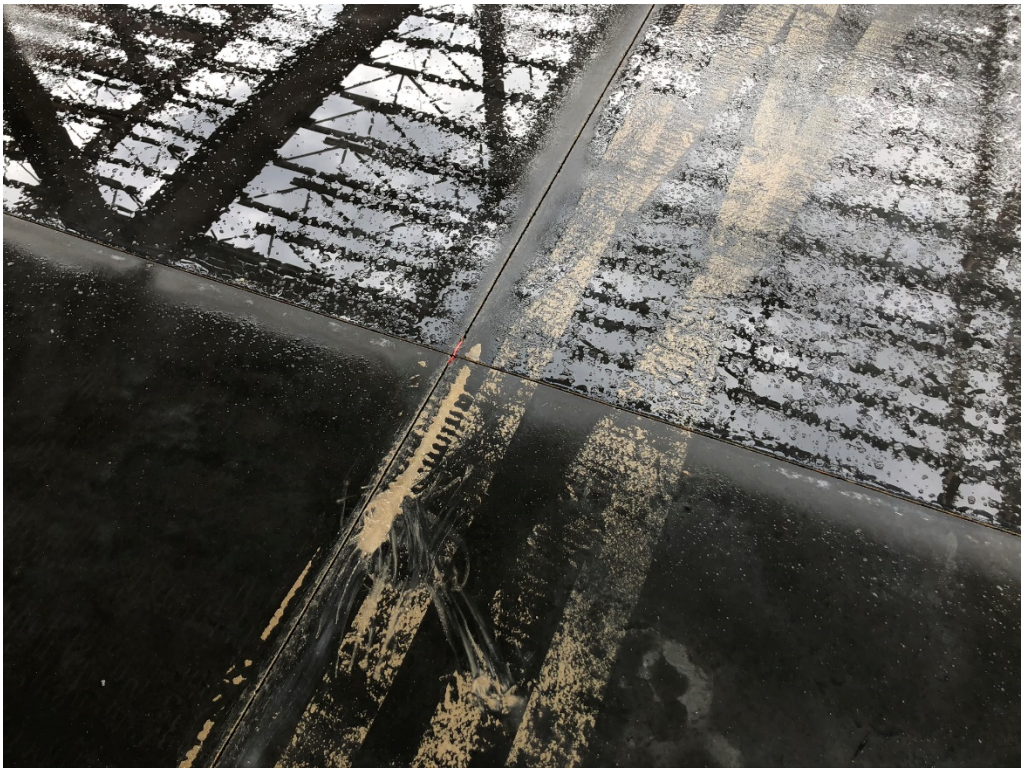


Figure 10 – Mortar Like Substance Tracked on Slab



Figure 11 – Eroded area Filled with Concrete



Figure 12 – Continued Rough-in Progress @ first floor cafeteria



Figure 13 – Mech Rough in @ First Floor



Figure 14 – Mech Rough in @ First Floor





Figure 15 – Will You cut Through Concrete Foundation for Venting?



Figure 16 – Concrete and Gypsum Connection



Figure 17 – NW of Site Looking SE



Figure 18 – NW of Site Looking E