

Architect's Field Report

201 Park Court, Suite B
Ridgeland, MS 39157
P 601.790.9432
F 888.281.0547

19 March 2020

18059-AOI Academy of Innovation / Report Number 026

One Jackson Place, Suite 250
188 East Capitol Street
Jackson, MS 39201-2100
P 601.352.5411
F 601.352.5362

Contract Century Construction
Date / Time 19 March 2020 / 12:15 PM
Weather / Temp Sunny and clear / 75 ° F
Est % Complete 40%
Sched Conformance + 71 days

161 Lameuse Street, Suite 201
Biloxi, MS 39530
P 228.374.1409
F 228.374.1414

Work in Progress Electrical Rough-IN
Light Gauge Framing
Concrete Footing Work
Present at Site Total Electric
Framing Crew / Electrical Crew
Ladner Testing
Paul Purser, DBA

Observations Arriving on site, I walked the site East to West and back. I arrived during lunch and did not see Century on site.

Concrete work was being performed at stair on Southeast corner. Finishers were troweling and applying texture.

Framers were inside installing light gauge steel framing. Light gauge framing has begun on the top floor in the east wing.

The south-central Footing that had a higher elevation than other sections of the adjacent retaining wall has been poured. Workers were removing forms there.

I reviewed concrete work from the most recent pour at the upper level of the west wing. There are many imperfections in the work as detailed in the accompanying photos. Some spots are flecking out and other appear to not be troweled at all. What can be done to repair/cleanup finish?

Light gauge framing has begun in this area at the lower level.

Items to Verify None
Action Required Make Recommendations on Repair of Concrete Finish
Report By:

Paul Purser, LEED AP
Dale | Bailey, an Association

cc: Wilson Little / Joey Moore / Allison Wood (CC)
Chad Shealy / Shaquita Burke / Christi Kilroy (VWSD)
Gary Bailey / Jason Stewart / Mark Pipper (BPM)
Russ Blount / Will Commarato / Candy Failor (DBA)
Brandon McKay / Austin Newell (WGK)
Jason Kackley / Al Guynes (GSK)
Chris Green / Larry Scott (TPS)
Jerry Montgomery (SM)



Figure 1 – East Building Erected



Figure 2 – Concrete Work at Pan Stairs

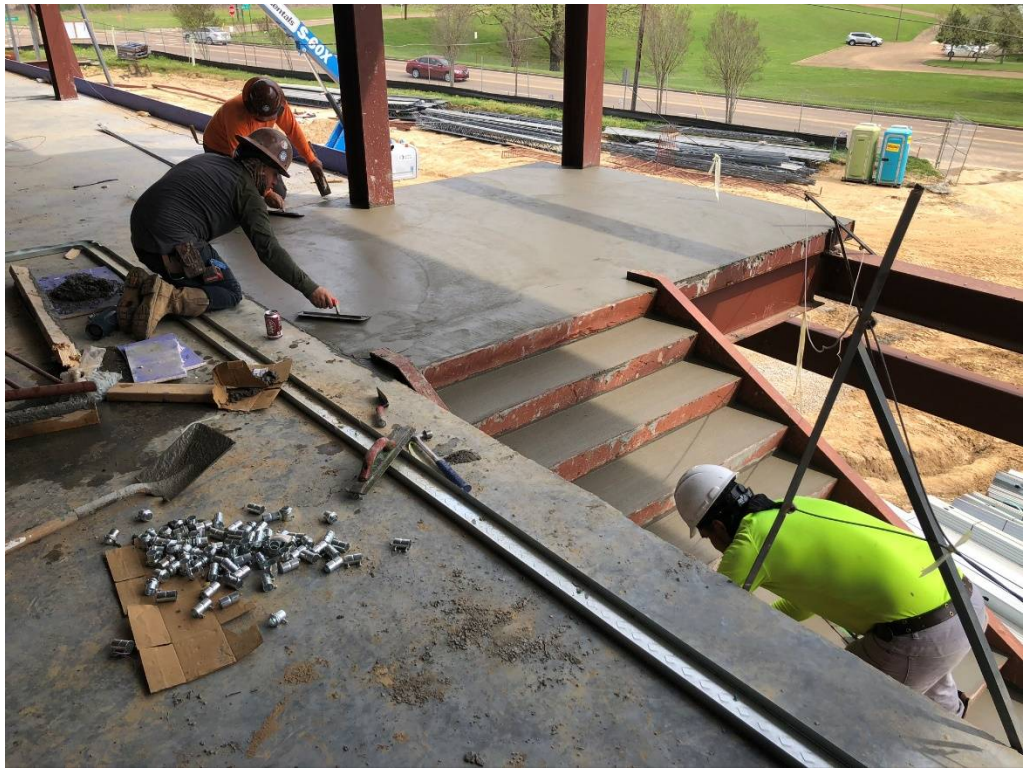


Figure 3 – Upper Floor Concrete Work at Pan Stairs



Figure 4 – East Building Section First Floor Looking WSW

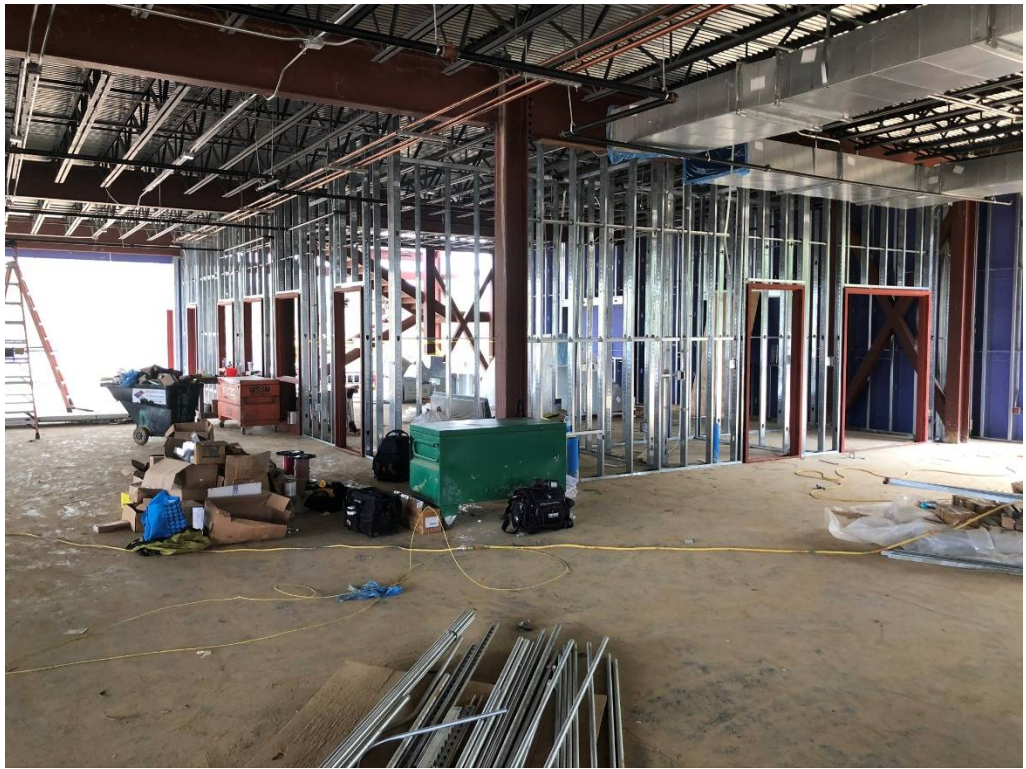


Figure 5 – East Building Section First Floor Looking ESE



Figure 6 – East Section of Building Upper Floor Light Gauge Framing Laid Out



Figure 7 – South Center of Site Looking NW



Figure 8 – South Center of Site Looking N



Figure 9 – South Center of Site Looking N



Figure 10 – South Center of Site Looking NE



Figure 11 – Footing Complete at South Center of Building



Figure 12 – West Upper Floor Slab



Figure 13 – Spalling at Concrete



Figure 14 – Un-troweled Mark



Figure 15 – Un-troweled Mark



Figure 16 – Spalling at Concrete



Figure 17 – Un-troweled Mark



Figure 18 – Un-troweled Mark



Figure 19 – Formwork at East Side Upper Floor West Section of Building



Figure 20 – West Elevation



Figure 21 – North Central Entrance Looking ESE



Figure 22 – North Central Entrance Looking S



Figure 23 – North Central Entrance Looking WSW



Figure 24 – Curved Drop Off Area



Figure 25 – North East Section of Site Looking SW



Figure 26 – North East Section of Site Looking S at North Elevation