

Architect's Field Report

201 Park Court, Suite B Ridgeland, MS 39157 P 601.790.9432 F 888.281.0547	26 February 2020 18059-AOI Academy of Innovation / Report Number 023
One Jackson Place, Suite 250 188 East Capitol Street Jackson, MS 39201-2100 P 601.352.5411 F 601.352.5362	Contract Century Construction Date / Time 25 February 2020 / 3:48 PM Weather / Temp Sunny and clear / 63 ° F Est % Complete 38% Sched Conformance + 02 days Work in Progress Plumbing Rough-IN Electrical Rough-IN Concrete Reinforcing Prep Steel Structure Erection
161 Lameuse Street, Suite 201 Biloxi, MS 39530 P 228.374.1409 F 228.374.1414	Present at Site Total Electric Joey Moore, Century Steel Crew / Rebar Crew / Plumbing Crew Paul Purser, DBA Observations I arrived on site on a nice sunny day, one of few lately. Light gauge framing has kept them from installing roof, and it has finally begun. This is also the first day in a while that they have been able to move dirt for the backfill between the structures. New steel in being installed and prep for concrete is being made.
	Items to Verify None Action Required None Report By:

Paul Purser, AIA, LEED AP, Partner
Dale | Bailey, an Association

cc: Wilson Little / Joey Moore / Allison Wood (CC)
Chad Shealy / Shaquita Burke / Christi Kilroy (VWSD)
Gary Bailey / Jason Stewart / Mark Pippner (BPM)
Russ Blount / Will Commarato / Candy Failor (DBA)
Brandon McKay / Austin Newell (WGK)
Jason Kackley / Al Guynes (GSK)
Chris Green / Larry Scott (TPS)
Jerry Montgomery (SM)

dalepartners.com

baileyarch.com

Architects Who Know Education



Figure 1 – East Building Erected



Figure 2 – Light Gauge Framing Started



Figure 3 – Light Gauge Framing



Figure 4 – Opening



Figure 5 – New Steel at Connection Between Previously Erected Steel



Figure 6 – Electrical & Plumbing Rough-in Ongoing in East Structure



Figure 7 – West Structure



Figure 8 – Center of Building Looking East



Figure 9 – North Entry Looking WSW



Figure 10 – North Entry Looking S



Figure 11 – North Entry Looking ESE



Figure 12 – West Structure Backfill Continued

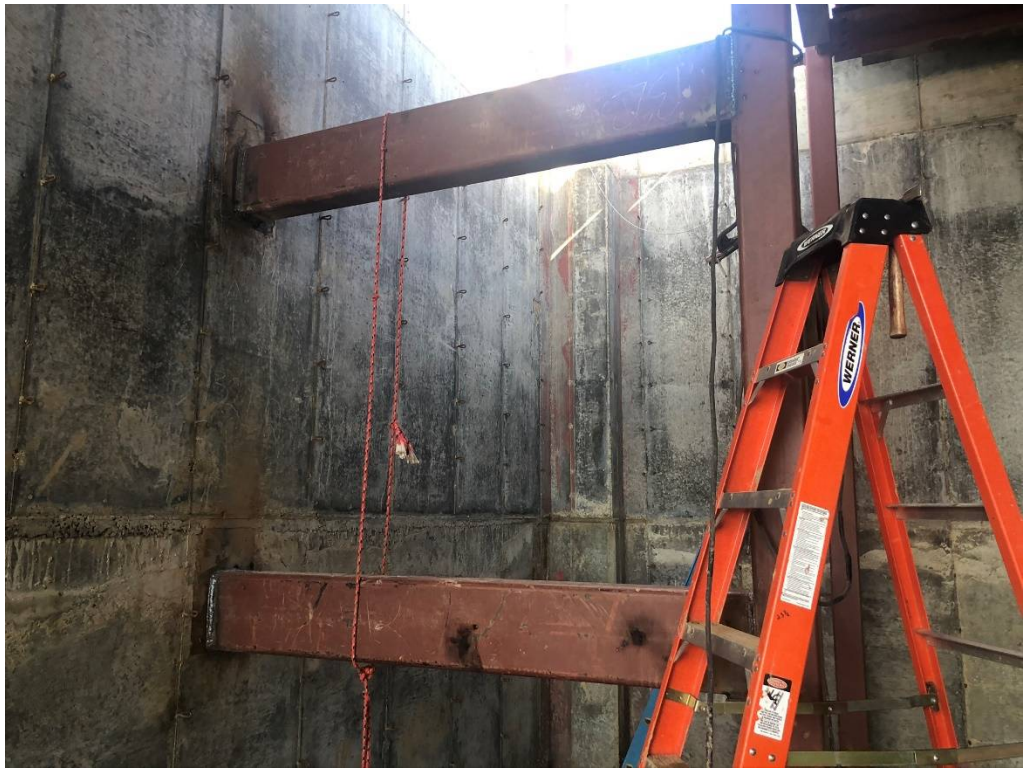


Figure 13 – Elevator Shaft Horizontal Supports Welded to Embedded Plates



Figure 14 – Welding @ Elevator Shaft Structure



Figure 15 – Plumbing Rough-In Ongoing in West Structure



Figure 16 – West End of Lower Building Looking @ South West Corner



Figure 17 – Southwest Corner of Building



Figure 18 – West Site Looking ENE

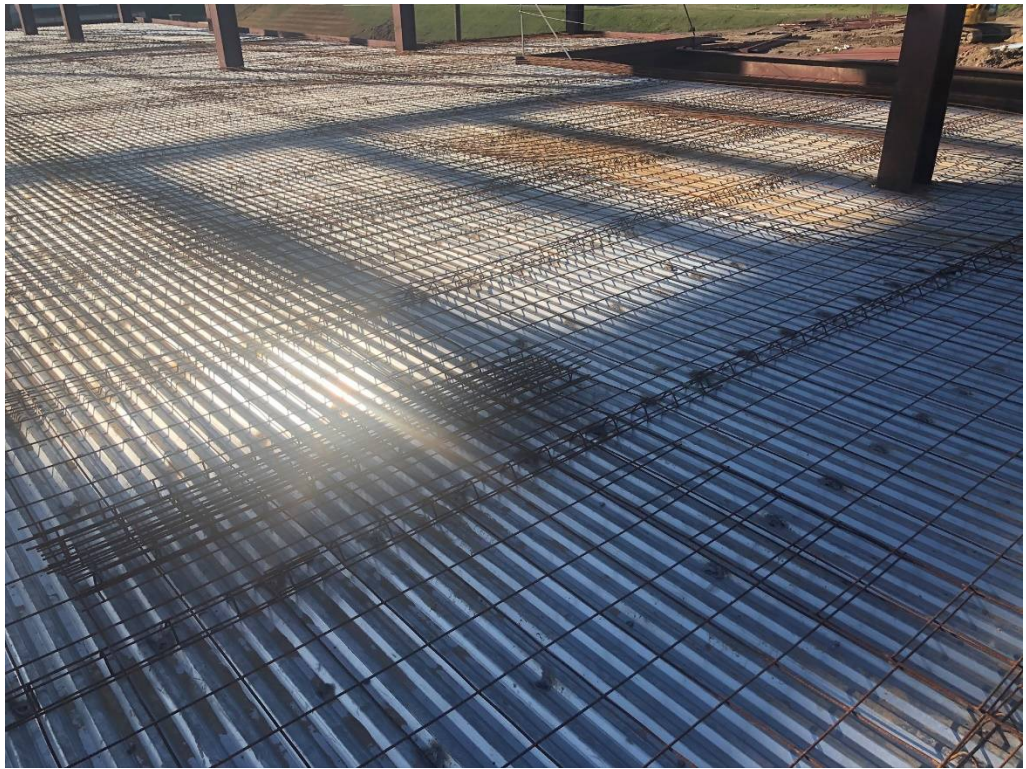


Figure 19 – Slab Prep for Concrete Pour

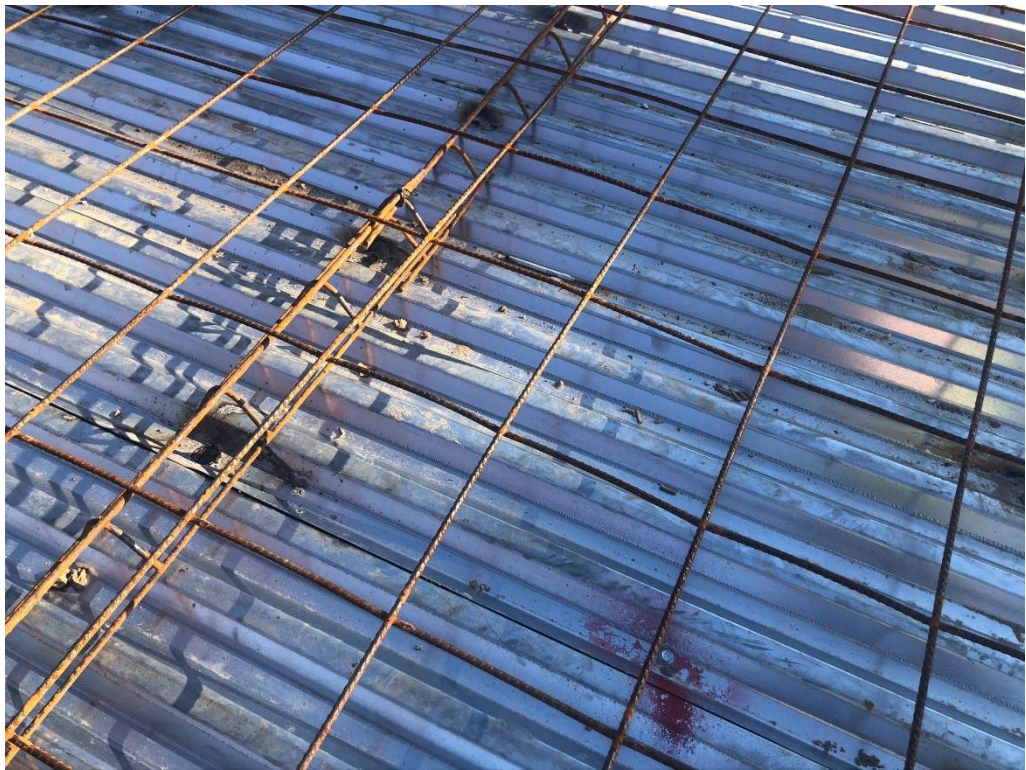


Figure 20 – Rebar Standoffs in use for Mesh



Figure 21 – South side of West Structure Looking North



Figure 22 – East Building Door Set in Place