

Architect's Field Report

201 Park Court, Suite B
Ridgeland, MS 39157
P 601.790.9432
F 888.281.0547

19 February 2020

18059-AOI Academy of Innovation / Report Number 022

One Jackson Place, Suite 250
188 East Capitol Street
Jackson, MS 39201-2100
P 601.352.5411
F 601.352.5362

Contract Century Construction
Date / Time 18 February 2020 / 2:34 PM

Weather / Temp Overcast / 74 ° F

Est % Complete 38%

Sched Conformance + 02 days

Work in Progress Plumbing Rough-IN
Electrical Rough-IN
Steel Deck Install
Steel Structure Erection

161 Lameuse Street, Suite 201
Biloxi, MS 39530
P 228.374.1409
F 228.374.1414

Present at Site Plumbing Crew
Total Electric
Joey Moore, Century
Steel Crew
Paul Purser, DBA

Observations It was slated to rain on this day, but rain held off. The steel Deck crew was making progress with sub-floor install. I met Joey Moore walking the site. He mentioned that they plan to pour floor on Friday.

Electrical rough-in continued on the second floor of the East building. Mr. Moore mentioned backfill of the west structure has been held up by rain, but as soon as they have some dry days in succession, they will be able to fill the backside of the west structure and seed the back slope to prevent further wash out.

Items to Verify None

Action Required None

Report By:

Paul Purser, AIA, LEED AP, Partner
Dale | Bailey, an Association

cc: Wilson Little / Joey Moore / Allison Wood (CC)
Chad Shealy / Shaquita Burke / Christi Kilroy (VWSD)
Gary Bailey / Jason Stewart / Mark Pipper (BPM)
Russ Blount / Will Commarato / Candy Failor (DBA)
Brandon McKay / Austin Newell (WGK)
Jason Kackley / Al Guynes (GSK)
Chris Green / Larry Scott (TPS)
Jerry Montgomery (SM)

dalepartners.com
baileyarch.com



Figure 1 – East Building Erected

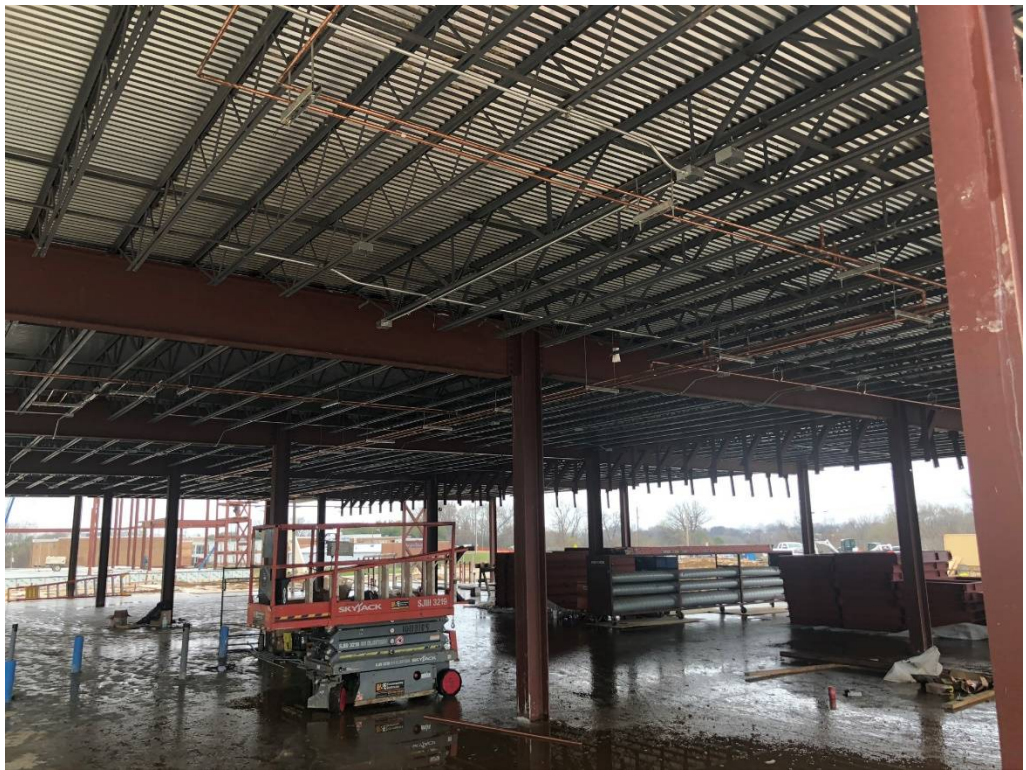


Figure 2 – Plumbing & Electrical Rough-In Ongoing



Figure 3 – Plumbing Rough-In Ongoing



Figure 4 – Spiral Duct On Site



Figure 5 – Concrete Piers at North Curvature



Figure 6 – West Building Progress

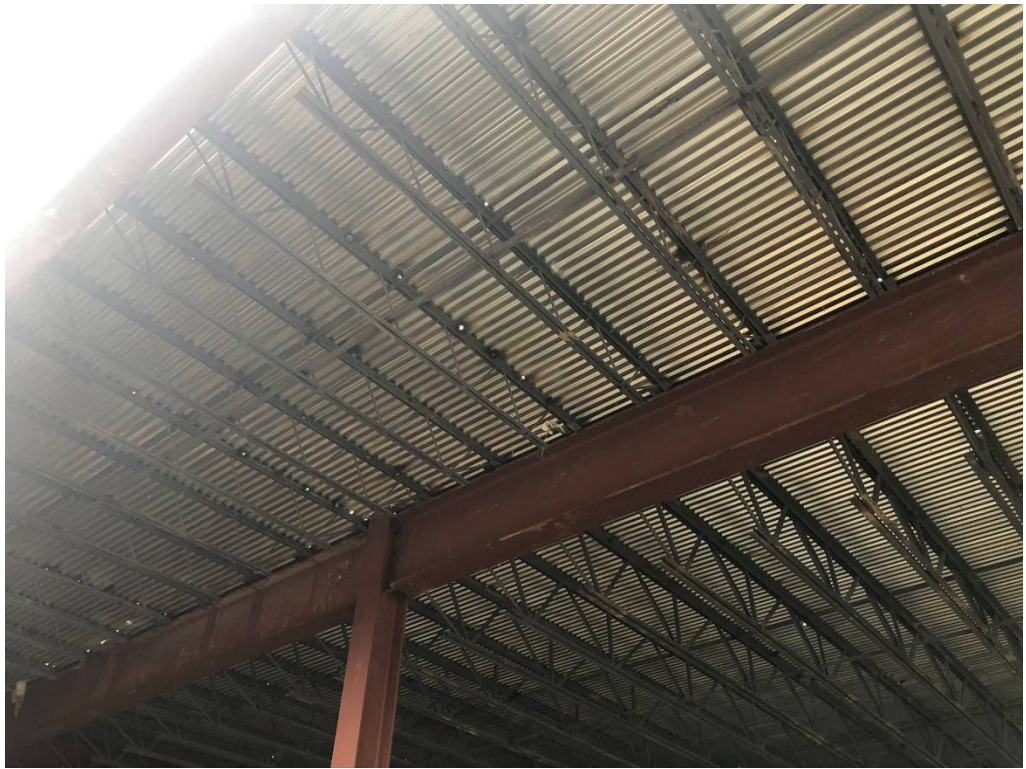


Figure 7 – Increased Burn Out on Deck Platform



Figure 8 – Roof Joist Setting at West Building



Figure 9 – Contractor Noted Conflict Between Mech & Floor Joists Here



Figure 10 – Floor Steel Decking Prepped for Concrete



Figure 11 – Elevator Pit Drained



Figure 12 – Continued Wash Out @ Southwest Corner of Lower Building



Figure 13 – Mis-Alignment of Concrete Recess and Steel Column



Figure 14 – Continued Sewer Work