

## Architect's Field Report

201 Park Court, Suite B  
Ridgeland, MS 39157  
P 601.790.9432  
F 888.281.0547

11 February 2020

18059-AOI Academy of Innovation / Report Number 021

One Jackson Place, Suite 250  
188 East Capitol Street  
Jackson, MS 39201-2100  
P 601.352.5411  
F 601.352.5362

Contract Century Construction  
Date / Time 12 February 2020 / 2:00 PM  
Weather / Temp Drizzle / 50 ° F  
Est % Complete 38%  
Sched Conformance + 02 days  
Work in Progress Plumbing Rough-IN  
Electrical Rough-IN

161 Lameuse Street, Suite 201  
Biloxi, MS 39530  
P 228.374.1409  
F 228.374.1414

Present at Site Plumbing Crew  
Total Electric  
Billy Burwell, Century  
Paul Purser, DBA

Observations It was a cold and wet day when I arrived, as have been most lately. E&P were getting some rough work done on the East structure at the lower level.

I walked the site. Not much work was being performed due to the weather. I spoke with Mr. Billy Burwell, CC. He mentioned that the steel crew were out earlier but had a lot of welding that could not be done in the rain.

Items to Verify None

Action Required None

Report By:

Paul Purser, AIA, LEED AP, Partner  
Dale | Bailey, an Association

cc: Wilson Little / Joey Moore / Allison Wood (CC)  
Chad Shealy / Shaquita Burke / Christi Kilroy (VWSD)  
Gary Bailey / Jason Stewart / Mark Pipper (BPM)  
Russ Blount / Will Commarato / Candy Failor (DBA)  
Brandon McKay / Austin Newell (WGK)  
Jason Kackley / Al Guynes (GSK)  
Chris Green / Larry Scott (TPS)  
Jerry Montgomery (SM)

dalepartners.com  
baileyarch.com



Figure 1 – East Building Erected



Figure 2 – Plumbing Rough-In Ongoing



Figure 3 – Plumbing & Electrical Rough-In Ongoing

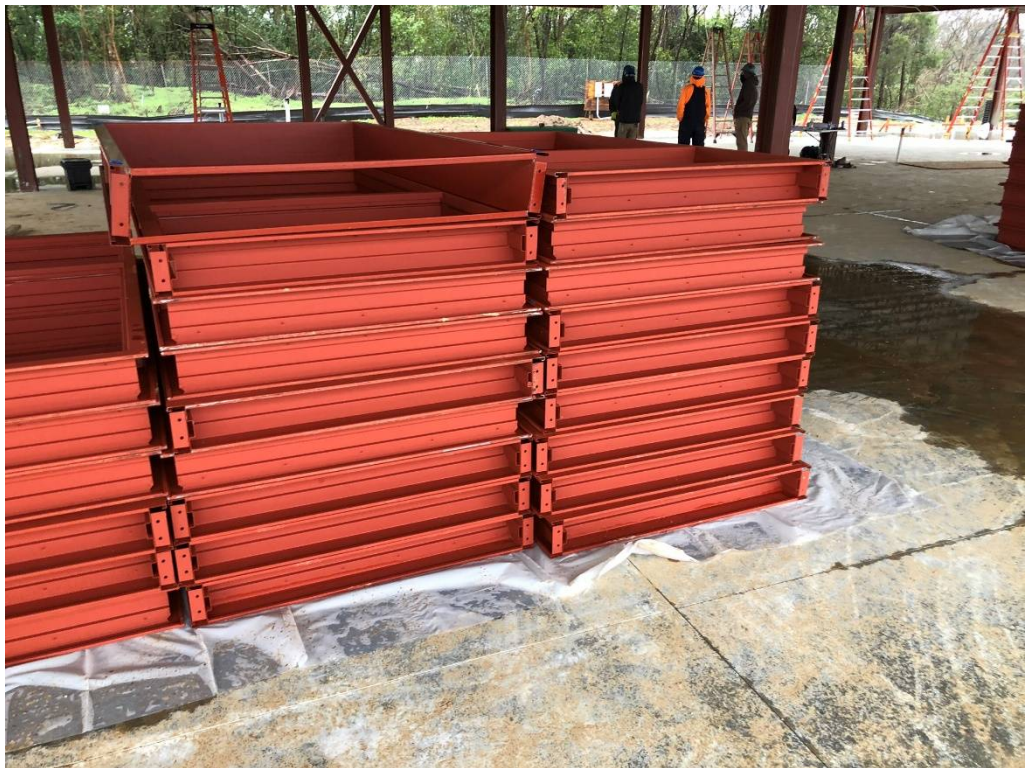


Figure 4 – Doors & Windows on Site



Figure 5 – Plumbing Rough-In Ongoing



Figure 6 – Plumbing Rough-In Ongoing



Figure 7 – West Building looking from West edge of East Structure



Figure 8 – Structural Connection @ West Building (North Center)



Figure 9 – Newly Poured Slab @ West Lower Level



Figure 10 – Evidence that Slab has been kept Sprinkled (4<sup>th</sup> Day Since Pour)



Figure 11 – South Wall in West Lower Building



Figure 12 – Potential Low Area in Slab @ East Wall in Lower West Level



Figure 13 – Thru-Slab Penetrations



Figure 14 – Elevator Framework





Figure 15 – Manholes Set



Figure 16 – West Structure from Southwest Vantage



Figure 17 – West Structure from West Vantage



Figure 18 – West Structure from Northwest Vantage