

## Architect's Field Report

201 Park Court, Suite B  
Ridgeland, MS 39157  
P 601.790.9432  
F 888.281.0547

06 February 2020

18059-AOI Academy of Innovation / Report Number 020

One Jackson Place, Suite 250  
188 East Capitol Street  
Jackson, MS 39201-2100  
P 601.352.5411  
F 601.352.5362

Contract Century Construction  
Date / Time 06 February 2020 / 11:00 AM  
Weather / Temp Overcast / 41 ° F  
Est % Complete 38%  
Sched Conformance + 02 days  
Work in Progress Foundation Work – Formwork  
Steel Erection

161 Lameuse Street, Suite 201  
Biloxi, MS 39530  
P 228.374.1409  
F 228.374.1414

Present at Site Foundation Crew  
Steel Crew  
Total Electric  
Joey Moore, Century  
Wilson Little, Century  
Paul Purser, DBA

Observations Arriving on site, I walked the site from East to West and Then Back. I noted Electrical and Plumbing work performed and ongoing in East Building. Foundation work is ongoing and prep for lower slab is being made. In speaking with Joey Moore and Wilson Little, I was told that tomorrow morning, this slab will be poured. Welders were installing deck at the upper floor in the lower building.

Items to Verify None

Action Required None

Report By:

Paul Purser, AIA, LEED AP, Partner  
Dale | Bailey, an Association

cc: Wilson Little / Joey Moore / Allison Wood (CC)  
Chad Shealy / Shaquita Burke / Christi Kilroy (VWSD)  
Gary Bailey / Jason Stewart / Mark Pipper (BPM)  
Russ Blount / Will Commarato / Candy Failor (DBA)  
Brandon McKay / Austin Newell (WGK)  
Jason Kackley / Al Guynes (GSK)  
Chris Green / Larry Scott (TPS)  
Jerry Montgomery (SM)



Figure 1 – East Building Erected

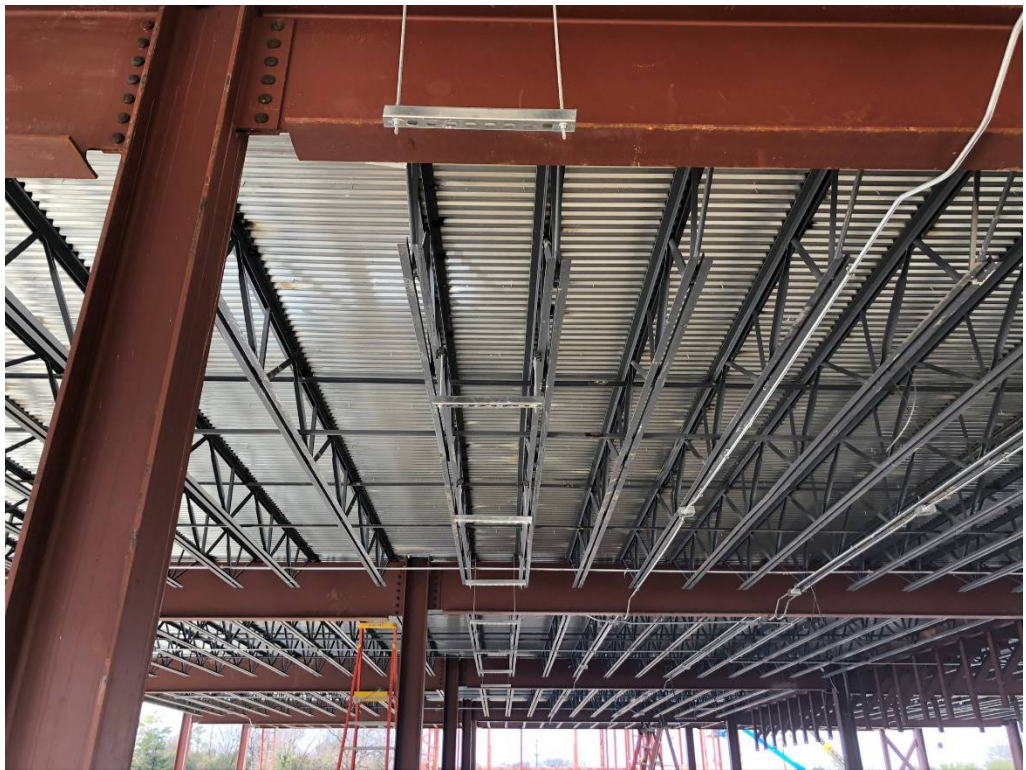


Figure 2 – Electrical Rough-In Ongoing



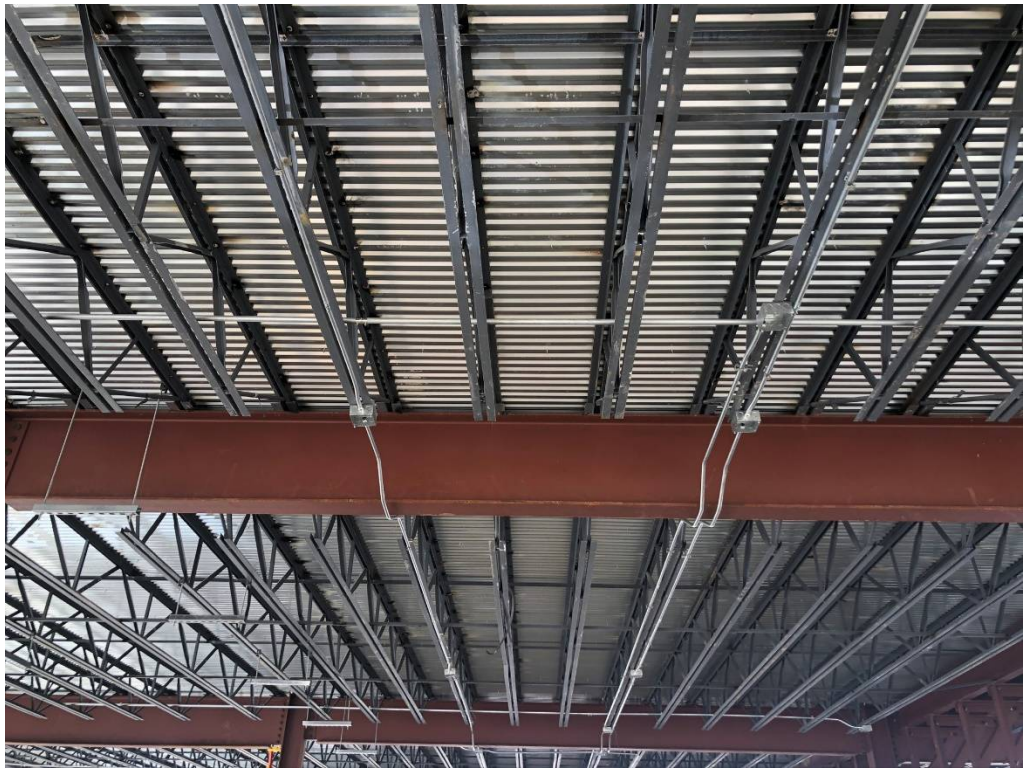


Figure 3 – Electrical Rough-In Ongoing



Figure 4 – Plumbing Rough-In Ongoing





Figure 5 – West Building Platform



Figure 6 – North Entry Looking WSW





Figure 7 – North Entry Looking S



Figure 8 – North Entry Looking ESE





Figure 9 – NW Corner of West Building Looking SE



Figure 10 – Rebar @ West Bottom Floor





Figure 11 – Rebar and Form @ South Wall in West Lower Building

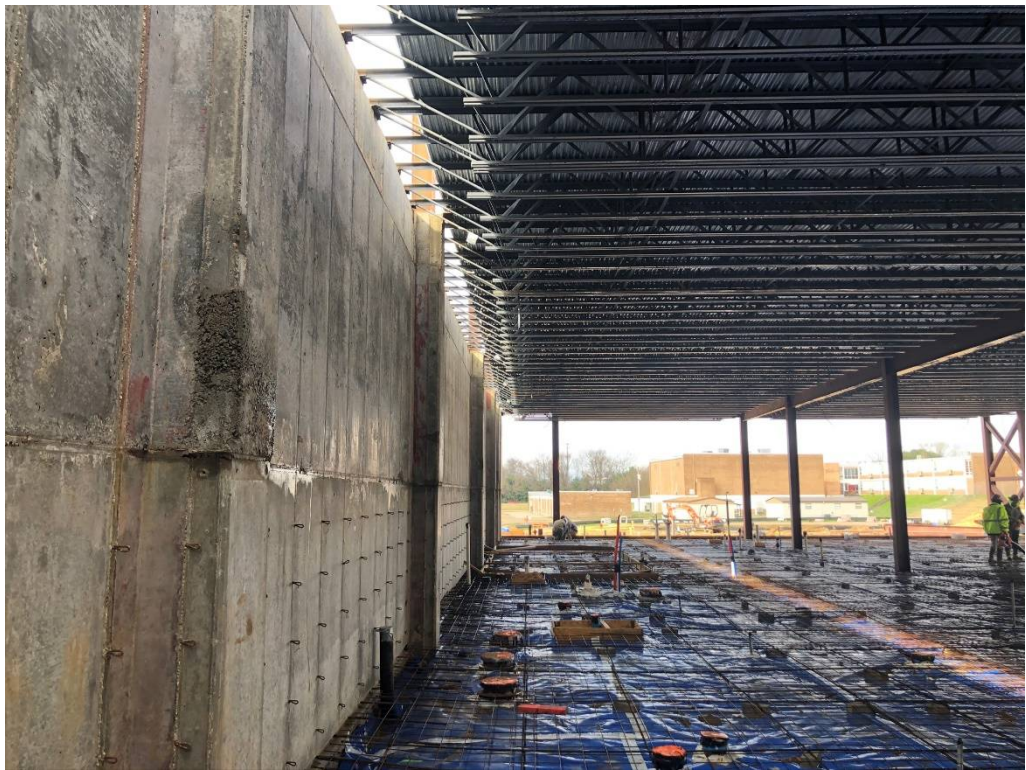


Figure 12 – South Wall Looking West from Interior



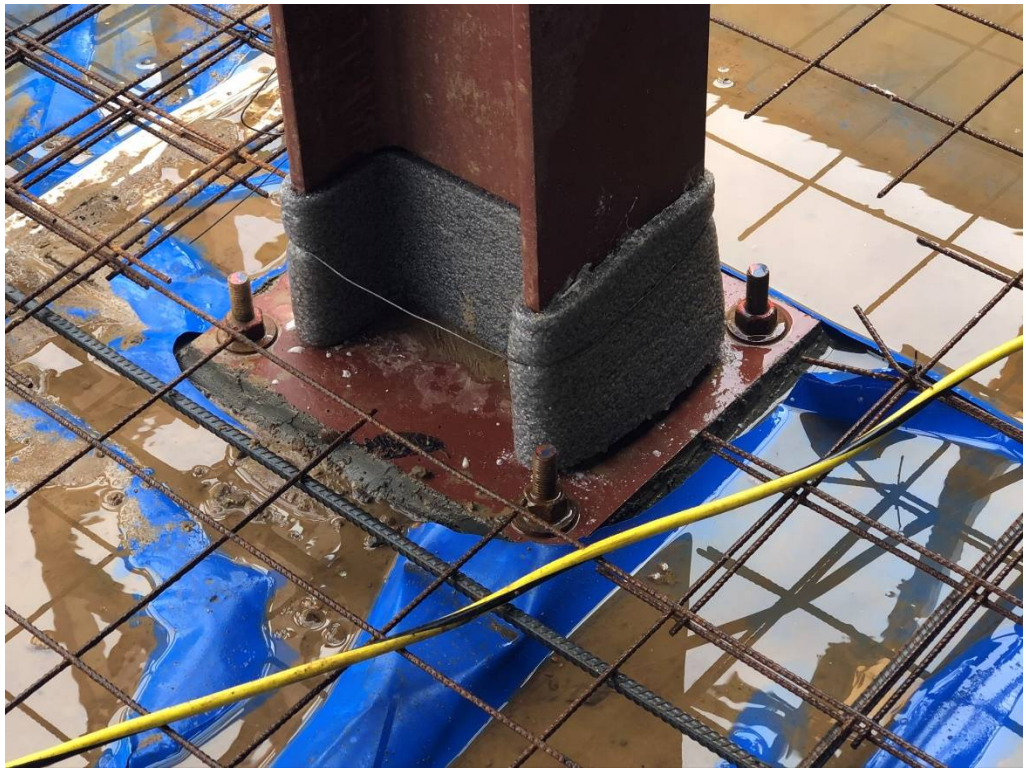


Figure 13 – Break Between Concrete & Steel



Figure 14 – Elevator Pit





Figure 15 – Rebar at Lower Level



Figure 16 – Note Potential Drainage Pad Break at Corner