

## Architect's Field Report

201 Park Court, Suite B Ridgeland, MS 39157 P 601.790.9432 F 888.281.0547	29 January 2020 18059-AOI Academy of Innovation / Report Number 019
One Jackson Place, Suite 250 188 East Capitol Street Jackson, MS 39201-2100 P 601.352.5411 F 601.352.5362	Contract Century Construction Date / Time 29 January 2020 / 3:45 PM Weather / Temp Overcast / 47 ° F Est % Complete 34% Sched Conformance + 02 days Work in Progress Foundation Work – Formwork Steel Erection
161 Lameuse Street, Suite 201 Biloxi, MS 39530 P 228.374.1409 F 228.374.1414	Present at Site Foundation Crew Steel Crew Joey Moore, Century Paul Purser, DBA
	Observations Arriving on site, I walked the site from East to West and Then Back. I met Joey Moore along the way and he said everything was going well. He mentioned that the slabs were kept wet using sprinklers.  Footing Work, digging and rebar installation were ongoing at the north central, upper section of building.  Most work was being performed at the lower level in preparation for concrete and completion of steel erection. Welders were installing joists, and crane work was being performed. Rebar work at this level and some form work were ongoing.
	Items to Verify None
	Action Required None
	Report By:

Paul Purser, AIA, LEED AP, Partner  
Dale | Bailey, an Association

cc: Wilson Little / Joey Moore / Allison Wood (CC)  
Chad Shealy / Shaquita Burke / Christi Kilroy (VWSD)  
Gary Bailey / Jason Stewart / Mark Pipper (BPM)  
Russ Blount / Will Commarato / Candy Failor (DBA)  
Brandon McKay / Austin Newell (WGK)  
Jason Kackley / Al Guynes (GSK)  
Chris Green / Larry Scott (TPS)  
Jerry Montgomery (SM)

dalepartners.com

baileyarch.com

Architects Who Know Education



Figure 1 – East Building Erected



Figure 2 – Lower Slab Day 7



Figure 3 – Footing Dug for North Out Stretch of Buidling



Figure 4 – Upper Slab Day 5



Figure 5 – Section Un-Finished (Awaiting Steel Egress Stair Installation)



Figure 6 – West Building Steel Erection Progress



Figure 7 – New Footings Poured on North Central Section of Building



Figure 8 – North Stretch Of Structure from The Second Level of East Building



Figure 9 – Man Hole Installed at North Section of Site



Figure 10 – Storm Sewer Overwhelmed at West Edge of Building Near Parking



Figure 11 – Progress on Steel Erection from NW of Structure



Figure 12 – Services Coming into Building



Figure 13 – Lower West Section of Building Looking East



Figure 14 – Southwest Corner of Structure





Figure 15 – Rebar Installed with Epoxy at Lower Level

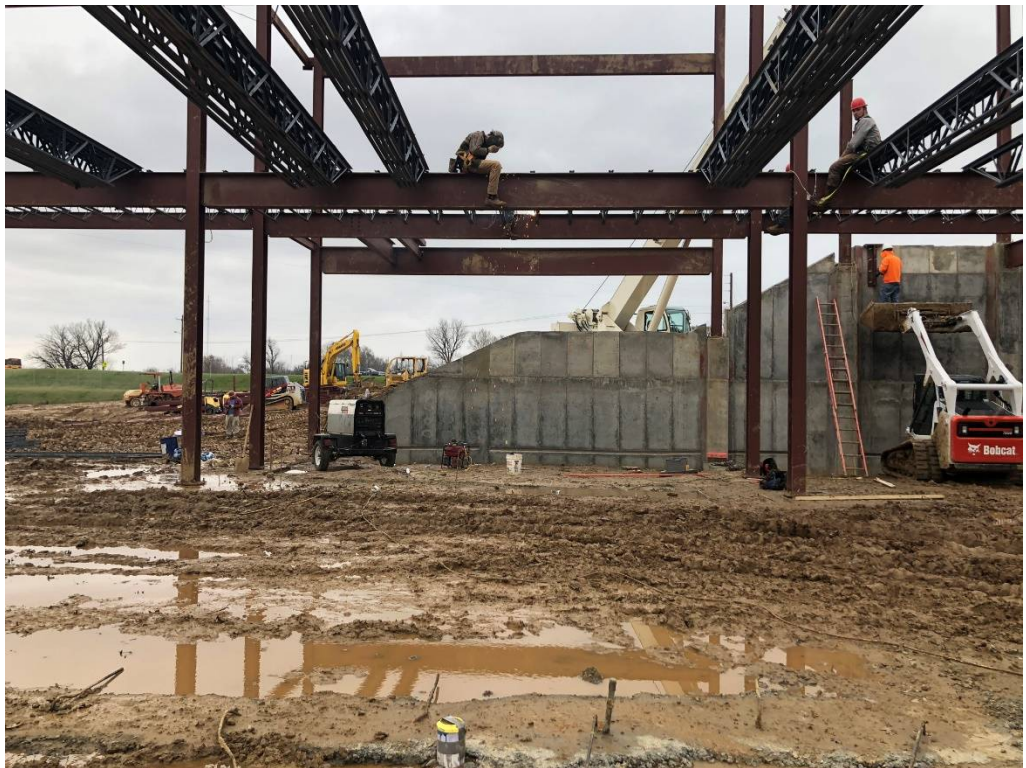


Figure 16 – Welders Installing Floor Joists



Figure 17 – Concrete Work and Mechanical Attachments at Foundation Wall



Figure 18 – Southwest Footing Where Previous Erosion Occurred



Figure 19 – Select Fill Installed at South Section of Lower West Building



Figure 20 – North Entry Looking WSW



Figure 21 – North Entry Looking S



Figure 22 – North Entry Looking ESE



Figure 23 – Out Stretch of Structure from North Perspective



Figure 24 – Temp Water