

## Architect's Field Report

201 Park Court, Suite B  
Ridgeland, MS 39157  
P 601.790.9432  
F 888.281.0547

21 January 2020

18059-AOI Academy of Innovation / Report Number 017

One Jackson Place, Suite 250  
188 East Capitol Street  
Jackson, MS 39201-2100  
P 601.352.5411  
F 601.352.5362

Contract Century Construction

Date / Time 21 January 2020 / 4:15 PM

Weather / Temp Drizzle / 70 ° F

Est % Complete 32%

Sched Conformance + 02 days

Work in Progress Foundation Work – Formwork  
Plumbing Work  
Steel Erection

161 Lameuse Street, Suite 201  
Biloxi, MS 39530  
P 228.374.1409  
F 228.374.1414

Present at Site Foundation Crew  
Steel Crew  
Metro Mechanical  
Joey Moore, Century  
Paul Purser, DBA

Observations Arriving, I walked the site. The foundation crew was busy setting rebar and mesh per structural drawings. Formwork for the upper East slab has been complete and plans to pour are for tomorrow. Metro Mechanical Employees were shooting levels for the installation of floor drains.

Some Concrete footings were poured today on the North Central section of building.

On the Southwest section of building, steel crews were erecting members. Select Fill has been placed on the northeast corner of the lower level and appears to be compacted.

Hydrant work has been performed in the parking area as well as some underground utilities on the south side of the parking lot.

There has been a large amount of erosion at the Southwest corner of the building that requires immediate attention. I spoke with Mr. Moore (century) and he said that the dirt crew has been instructed to excavate, re fill and compact this corner tomorrow. There is an underground pipe already set in this location and will require special attention with dirt rework.

Items to Verify      Proper rework method for re-compaction of southwest corner involving installed underground pipe.

Action Required      None

Report By:

Paul Purser, AIA, LEED AP, Partner  
Dale | Bailey, an Association

cc:    Wilson Little / Joey Moore / Allison Wood (CC)  
      Chad Shealy / Shaquita Burke / Christi Kilroy (VWSD)  
      Gary Bailey / Jason Stewart / Mark Pipper (BPM)  
      Russ Blount / Will Commarato / Candy Failor (DBA)  
      Brandon McKay / Austin Newell (WGK)  
      Jason Kackley / Al Guynes (GSK)  
      Chris Green / Larry Scott (TPS)  
      Jerry Montgomery (SM)



Figure 1 – Red Steel Erected



Figure 2 – Formwork in place



Figure 3 – Typical Isolation around steel

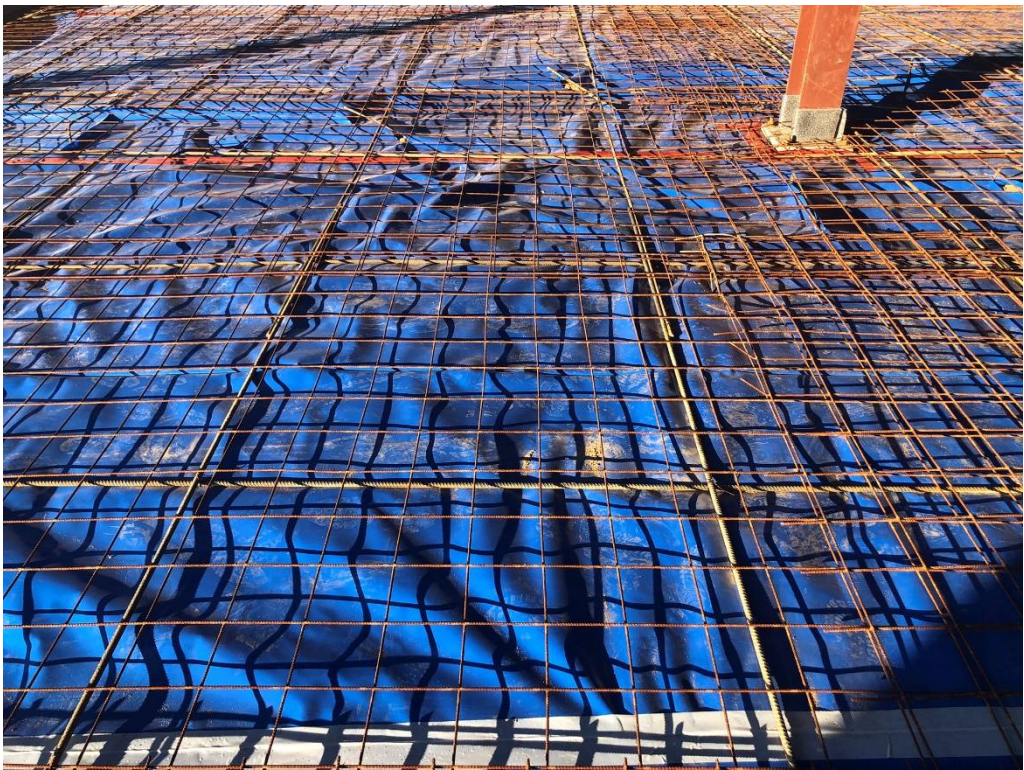


Figure 4 – Typical reinforcing

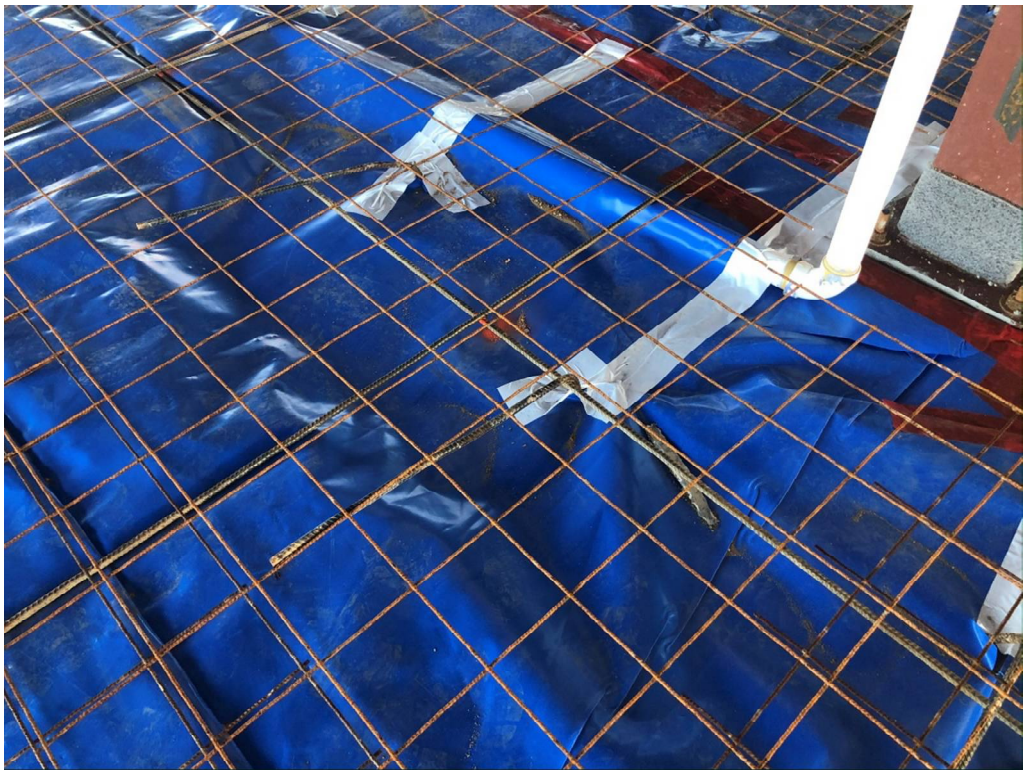


Figure 5 – Tear in moisture barrier repaired



Figure 6 – North East corner of Upper Structure



Figure 7 – Plumbers setting floor drains



Figure 8 – Newly poured Concrete Footings



Figure 9 – Steel Erected; view from north west corner looking SSE



Figure 10 – Underground Utilities to west of lower structure



Figure 11 – Underground Utilities



Figure 12 – Hydrant set





Figure 13 – Steel Erected; View From Southwest corner looking WNW

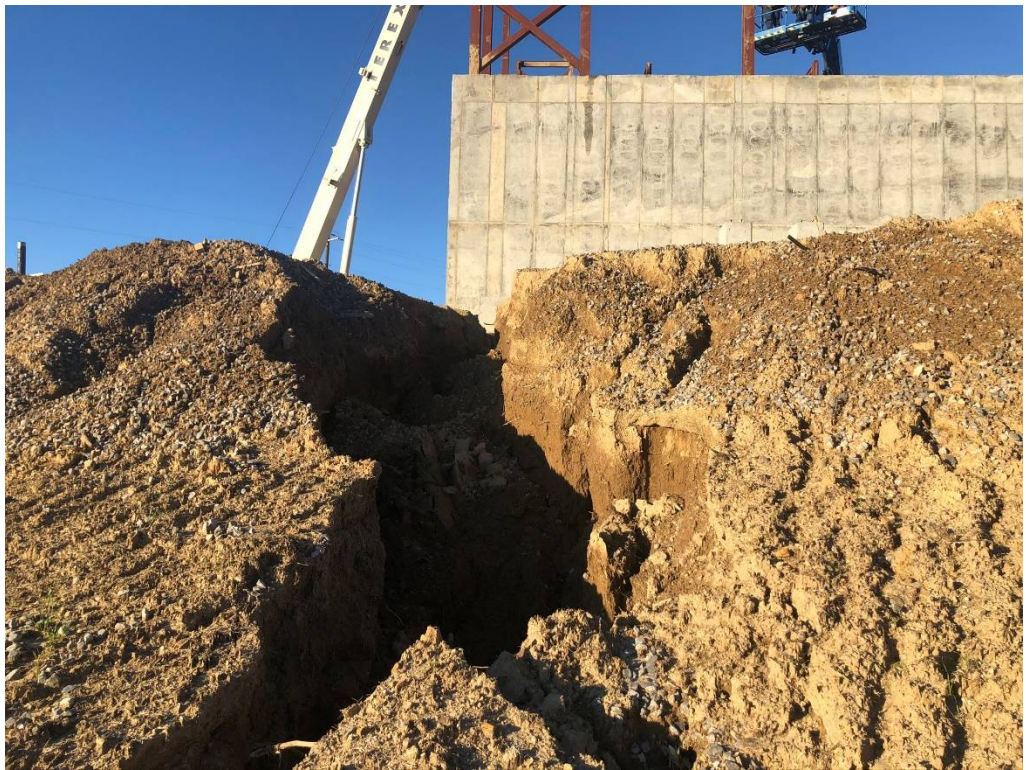


Figure 14 – Erosion at Southwest Corner of building (approx. 5-6 feet deep)



Figure 15 – Underside of footing exposed

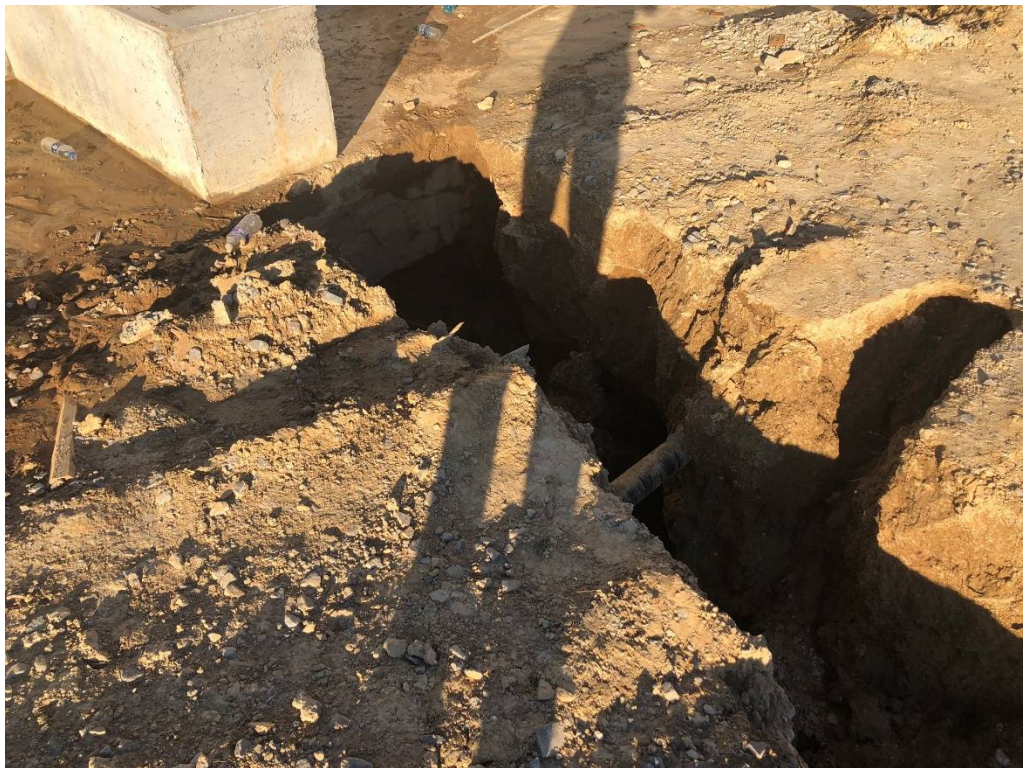


Figure 16 – Note Pipe in center right of picture



Figure 17 – Select Fill Installed at foundation wall



Figure 18 – Select fill compacted