

Architect's Field Report

201 Park Court, Suite B
Ridgeland, MS 39157
P 601.790.9432
F 888.281.0547

06 December 2019

18059-AOI Academy of Innovation / Report Number 011

One Jackson Place, Suite 250
188 East Capitol Street
Jackson, MS 39201-2100
P 601.352.5411
F 601.352.5362

Contract Century Construction
Date / Time 05 December 2019 / 10:45 AM
Weather / Temp Clear / 65 ° F
Est % Complete 23%
Sched Conformance +/- 00 days

161 Lameuse Street, Suite 201
Biloxi, MS 39530
P 228.374.1409
F 228.374.1414

Work in Progress Foundation Work – Rebar Tie Up
Below Slab Sewer Work
Storm Sewer Install
Steel Erection
Present at Site Joey Moore, Century Construction
Foundation Crew
Steel Erectors
Metro Mechanical
Brandon McKay, Al Guynes (WGK)
Russ Blount, Will Commarato, Paul Purser, DBA

Observations After our Monthly progress meeting, I walked the site. Steel Erection is moving along. Welders and crane workers were present installing Northeast overhang steel structure. Steel appeared plumb.
Metro mechanical employees were installing sewer lines on the south lower level. Below grade electrical conduit appeared to have been installed. The Foundation crew members were busy installing wall forms for the lower level retaining wall.
Storm sewer crew was also busy digging and tying in the remaining storm sewer on the north central portion of the site.

Items to Verify None
Action Required None

Report By:

Paul Purser, AIA, LEED AP, Partner
Dale | Bailey, an Association

cc: Wilson Little / Joey Moore / Allison Wood (CC)
Chad Shealy / Shaquita Burke (VWSD)

Gary Bailey / Jason Stewart / Mark Pipper (BPM)
Russ Blount / Will Commarato / Candy Failor (DBA)
Brandon McKay / Jason Kackley / Al Guynes (WGK)
Chris Green / Larry Scott (TPS)
Jerry Montgomery (SM)



Figure 1 – Red Steel Erected



Figure 2 – Steel at Second level slightly out of Plumb (atypical)



Figure 3 – Bolted Furr Down



Figure 4 – Steel at Northwest Corner at Upper East Building



Figure 5 – Steel Plumb (typical)



Figure 6 – Lower Level Foundation Work



Figure 7 – North Entry Looking WSW



Figure 8 – North Entry Looking S



Figure 9 – North Entry Looking ESE



Figure 10 – Storm Sewer Work



Figure 11 – North Footing on Lower Level



Figure 12 – Tie in Rebar at Pilaster



Figure 13 – Plumbing in Footing Pour



Figure 14 – Retaining Wall Rebar

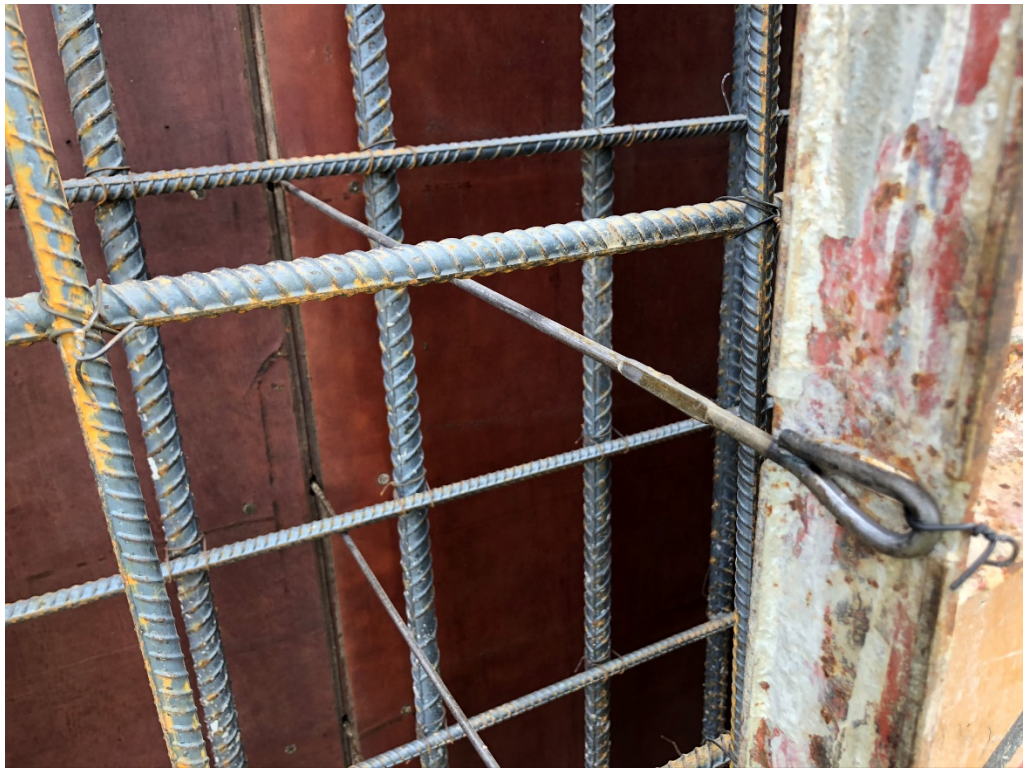


Figure 15 – Tie Bars in Use (typical)



Figure 16 – Braced Retaining Wall



Figure 17 – Sewer Pipe for Head Test



Figure 18 – North East Corner Overhang



Figure 19 – East Welding Work and Erection