

Architect's Field Report

201 Park Court, Suite B
Ridgeland, MS 39157
P 601.790.9432
F 888.281.0547

14 November 2019

18059-AOI Academy of Innovation / Report Number 008

One Jackson Place, Suite 250
188 East Capitol Street
Jackson, MS 39201-2100
P 601.352.5411
F 601.352.5362

Contract Century Construction
Date / Time 13 November 2019 / 11:30 AM
Weather / Temp Clear / 35 ° F
Est % Complete 2%
Sched Conformance +/- 00 days
Work in Progress Foundation Work, Storm Sewer Work

161 Lameuse Street, Suite 201
Biloxi, MS 39530
P 228.374.1409
F 228.374.1414

Present at Site Joey Moore, Century Construction
Peterson Contractors
Metro Mechanical
Foundation Crew
Paul Purser, DBA

Observations I arrived on site at 11:30. It was cold and clear.

Walking the upper slab, I noted that the Foundation Crew was busy with rebar and pouring concrete.

I walked the site and noted that plumbing slab rough-in has been installed at upper slab. Also storm sewer work was in progress at lower parking area.

New items that have arrived at site include but are not limited to red steel, drainage pipe, and additional rebar and formwork elements.

Items to Verify Confirm Plumbing Horizontal runs are ok to encase in Concrete

Action Required None

Report By:

Paul Purser, AIA, LEED AP, Partner
Dale | Bailey, an Association

cc: Wilson Little / Joey Moore / Allison Wood (CC)
Chad Shealy / Shaquita Burke (VWSD)
Gary Bailey / Jason Stewart / Mark Pipper (BPM)
Russ Blount / Will Commarato / Candy Failor (DBA)
Brandon McKay / Jason Kackley / Al Guynes (WGK)
Chris Green / Larry Scott (TPS)
Jerry Montgomery (SM)



Figure 1 – Dirt Tracked out to Intersection from Work



Figure 2 – Red Steel Stored on Site



Figure 3 – Foundation Beam



Figure 4 – Reinforcement @ Beams

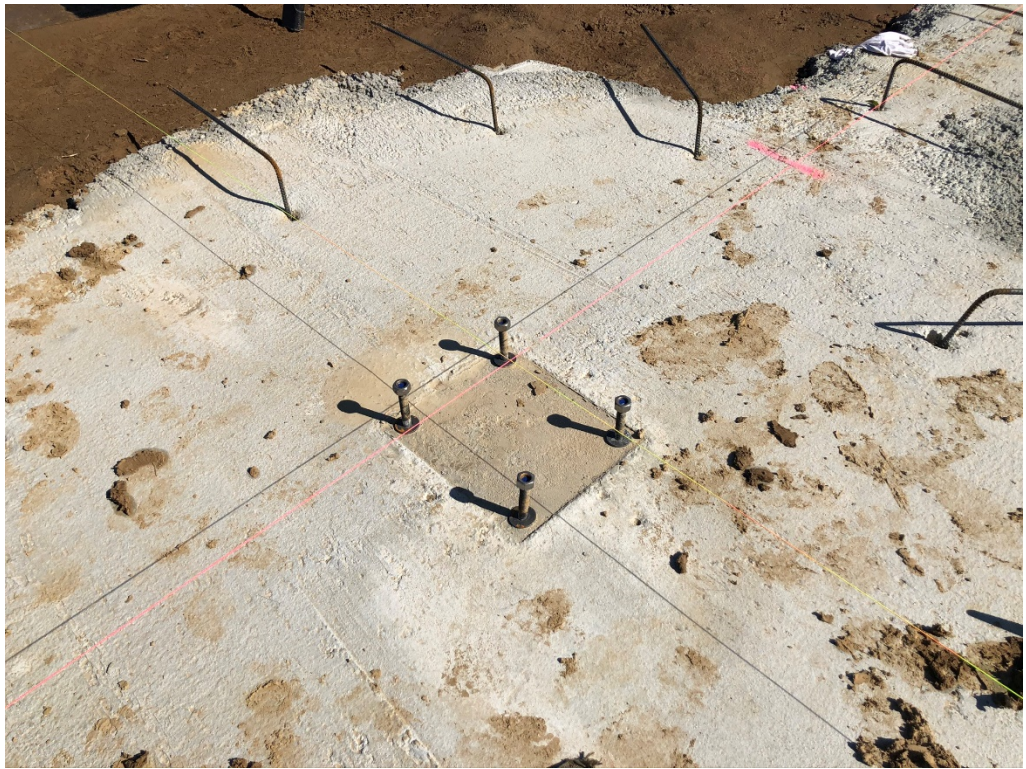


Figure 5 – Typical Bolt Layout @ Isolation Footing



Figure 6 – Lines Laying out Beams



Figure 7 – Stubbed up Plumbing (Confirm to be Encased in Slab Horizontally?)

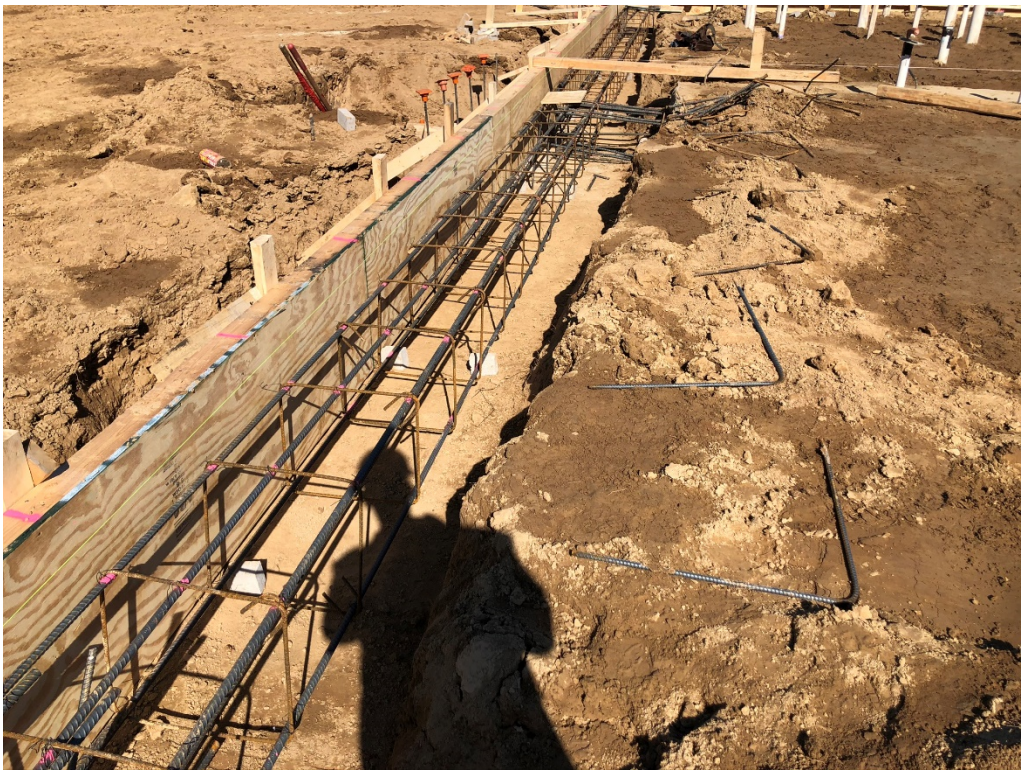


Figure 8 – Plywood @ Excavation for Form



Figure 9 – Horizontal Run of Pipe to be Encased in Footing



Figure 10 – Safety Caps in use @ Vertical Rebar



Figure 11 – Plumbing Stubbed Up



Figure 12 – City Water Tap @ North Entry



Figure 13 – North Entry Looking WSW



Figure 14 – North Entry Looking S



Figure 15 – North Entry Looking ESE



Figure 16 – Parking Area



Figure 17 – National Fence Closed Gap in Fencing



Figure 18 – Storm Sewer Excavation



Figure 19 – Pipe Stored on Site



Figure 20 – Pipe Stored on Site



Figure 21 – Concrete Test Cores



Figure 22 – Drive Removed for work on Storm Sewer Connection