

Architect's Field Report

201 Park Court, Suite B
Ridgeland, MS 39157
P 601.790.9432
F 888.281.0547

12 March 2021

18053-Vicksburg Junior High School / Report Number 030

One Jackson Place, Suite 250
188 East Capitol Street
Jackson, MS 39201-2100
P 601.352.5411
F 601.352.5362

Contract Paul Jackson & Son
Date / Time 11 March 2021 / 9:00 AM
Weather / Temp Partly cloudy / 75 ° F
Est % Complete 65%
Sched Conformance + 00 days
Work in Progress Service Installations
Concrete Forming

161 Lameuse Street, Suite 201
Biloxi, MS 39530
P 228.374.1409
F 228.374.1414

Present at Site Jeff Porter, PJS
Electricians
Concrete Workers & Graders
Paul Purser, DBA

Observations On site, workers were laying out formwork for concrete and planning new sidewalk. I spoke with Jeff Porter who mentioned that a gas pipe is preventing them from moving forward on some of the site work and that the city has been contacted about moving it.

Storefront has been partially installed at the addition. Presumably the glazing is only partially installed in an effort to dry in for the drywall finish work that has been done at the interior. Moisture levels are high as it is April and an effort should be made to further dry in the addition to prevent against mold at the gypsum products.

Items to Verify None

Action Required None

Report By:

Paul Purser, AIA, LEED AP
Dale | Bailey, an Association

cc: Austin Stults / Jeff Porter / Kipp Ready (PJS)
Chad Shealy / Shaquita Burke / Christi Kilroy (VWSD)
Gary Bailey / Jason Stewart / Mark Pipper (BPM)
Russ Blount / Candy Failor (DBA)
Brandon McKay / Austin Newell (WGK)
Jason Kackley / Al Guynes (GSK)
Chris Green / Larry Scott (TPS)
Tom Schaeffer / Tad Hoffpaur (SDG)



Figure 1 – Storefront Installed



Figure 2 – Storefront Installed



Figure 3 – Storefront Installed

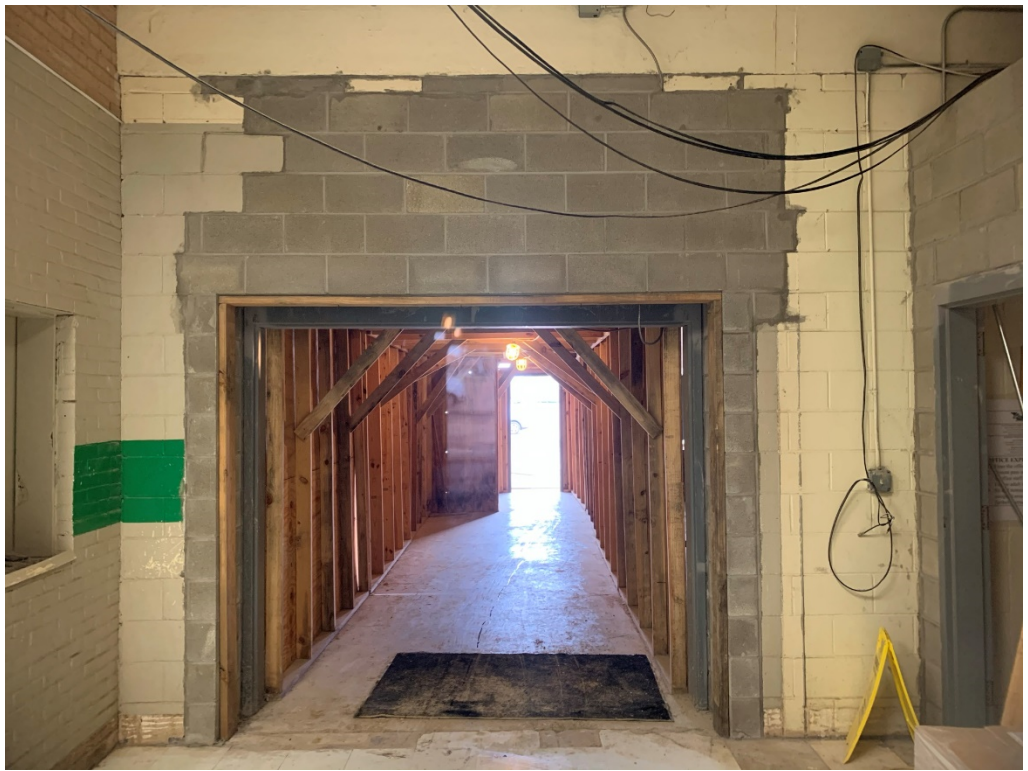


Figure 4 – Interior Service work is Ongoing



Figure 5 – Electricians On Site



Figure 6 – Reception Looking Down Corridor



Figure 7 – Book Keeper



Figure 8 – Work Room



Figure 9 – Conference



Figure 10 – Office 207



Figure 11 – Principal's Office



Figure 12 – Corridor A-212



Figure 13 – The Vault



Figure 14 – The Vault



Figure 15 – Counselor Office



Figure 16 – Storefront Installed



Figure 17 – Forms for new Sidewalk



Figure 18 – Contractor Reviewing Grading