

## Architect's Field Report

201 Park Court, Suite B  
Ridgeland, MS 39157  
P 601.790.9432  
F 888.281.0547

31 December 2020

18053-Vicksburg Junior High School / Report Number 026

One Jackson Place, Suite 250  
188 East Capitol Street  
Jackson, MS 39201-2100  
P 601.352.5411  
F 601.352.5362

Contract Paul Jackson & Son  
Date / Time 29 December 2020 / 1:30 PM  
Weather / Temp Clear / 64 ° F  
Est % Complete 50%  
Sched Conformance + 00 days  
Work in Progress Masonry  
Present at Site Jeff Porter, PJS  
Paul Purser, DBA

161 Lameuse Street, Suite 201  
Biloxi, MS 39530  
P 228.374.1409  
F 228.374.1414

Observations Arriving on site, I noted that brick work is nearing completion. Masons were still on site, finishing up the work, but for the most part, our brick veneer has been installed.

At the interior, some duct work has been installed. Roof drains have also been connected and a temporary drain to the exterior is installed currently.

Items to Verify None

Action Required None

Report By:

Paul Purser, AIA, LEED AP  
Dale | Bailey, an Association

cc: Austin Stults / Jeff Porter / Kipp Ready (PJS)  
Chad Shealy / Shaquita Burke / Christi Kilroy (VWSD)  
Gary Bailey / Jason Stewart / Mark Pipper (BPM)  
Russ Blount / Candy Failor (DBA)  
Brandon McKay / Austin Newell (WGK)  
Jason Kackley / Al Guynes (GSK)  
Chris Green / Larry Scott (TPS)  
Tom Schaeffer / Tad Hoffpauir (SDG)



Figure 1 – East Elevation



Figure 2 – East Entry



Figure 3 – North Elevation



Figure 4 – Typical Window Jamb Detail



Figure 5 – South Elevation



Figure 6 – South Elevation



Figure 7 – Interior Admin Area

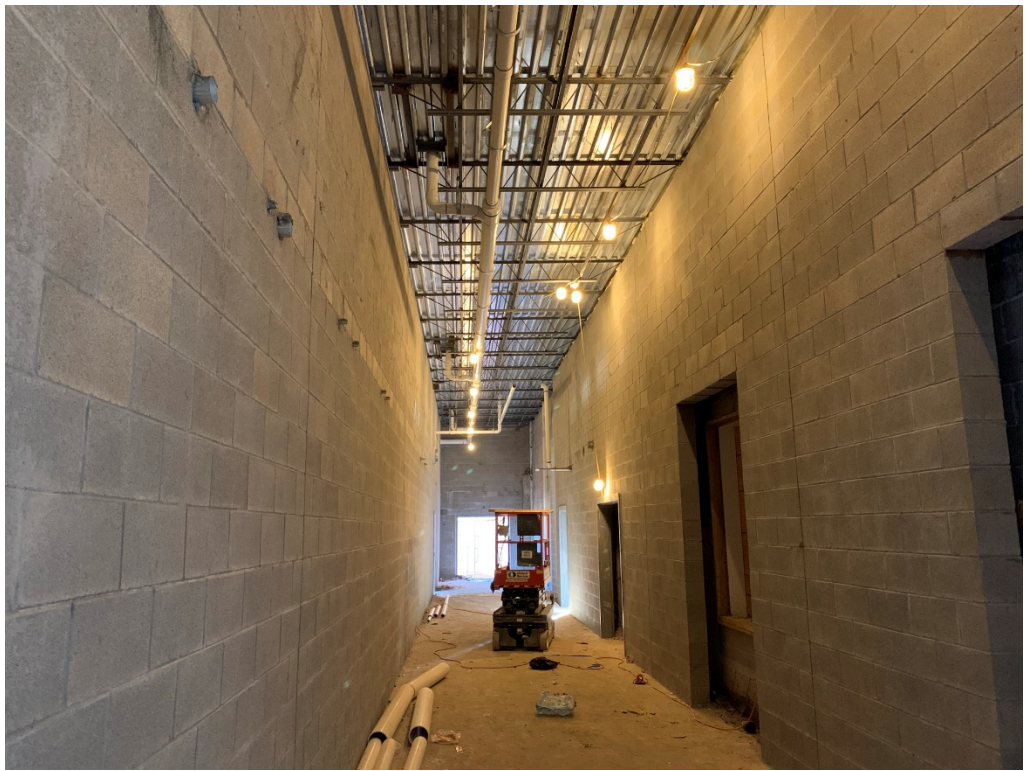


Figure 8 – Interior Hall



Figure 9 – Interior Admin Area



Figure 10 – Interior Hall Paint is Ongoing



Figure 11 – Interior Hall Paint is Ongoing



Figure 12 – Interior Hall Paint is Ongoing