

Architect's Field Report

201 Park Court, Suite B
Ridgeland, MS 39157
P 601.790.9432
F 888.281.0547

24 July 2020

18053-Vicksburg Junior High School / Report Number 015

One Jackson Place, Suite 250
188 East Capitol Street
Jackson, MS 39201-2100
P 601.352.5411
F 601.352.5362

Contract Paul Jackson & Son
Date / Time 23 July 2020 / 3:45 PM
Weather / Temp Clear / 89 ° F
Est % Complete 25%
Sched Conformance + 00 days
Work in Progress Concrete Board Installation
HVAC Duct Work

161 Lameuse Street, Suite 201
Biloxi, MS 39530
P 228.374.1409
F 228.374.1414

Present at Site Paul Purser, DBA

Observations I entered the site through the south hall; hallways at the west hall have been cleared and items moved into classrooms. HVAC laborers were working at the hall.

At restroom E-226C, tile work is ongoing; E-226B had workers installing substrate at plumbing walls.

Tile work is complete in the western-most bathrooms at this level. A few tiles need to be reset, but for the most part, the work is acceptable.

Items to Verify None

Action Required Reset Some Tiles

Report By:

Paul Purser, AIA, LEED AP
Dale | Bailey, an Association

cc: Austin Stults / Jeff Porter / Kipp Ready (PJS)
Chad Shealy / Shaquita Burke / Christi Kilroy (VWSD)
Gary Bailey / Jason Stewart / Mark Pipper (BPM)
Russ Blount / Candy Failor (DBA)
Brandon McKay / Austin Newell (WGK)
Jason Kackley / Al Guynes (GSK)
Chris Green / Larry Scott (TPS)
Tom Schaeffer / Tad Hoffpaur (SDG)



Figure 1 – Site from Job Site Trailer



Figure 2 – Hallways are clearing out



Figure 3 – E-226C Bathroom Tile



Figure 4 – E-226C Bathroom



Figure 5 – E-226C Bathroom Tile



Figure 6 – E-226B Bathroom



Figure 7 – E-226B Bathroom

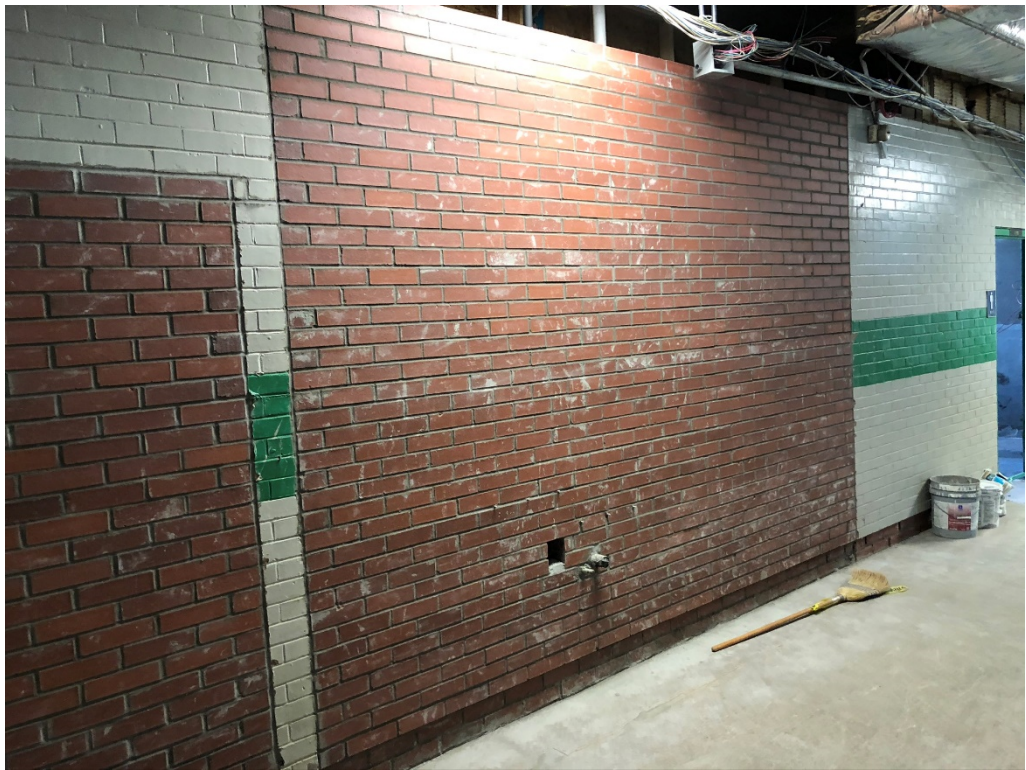


Figure 8 – New Brick at Chase in Corridor Wall

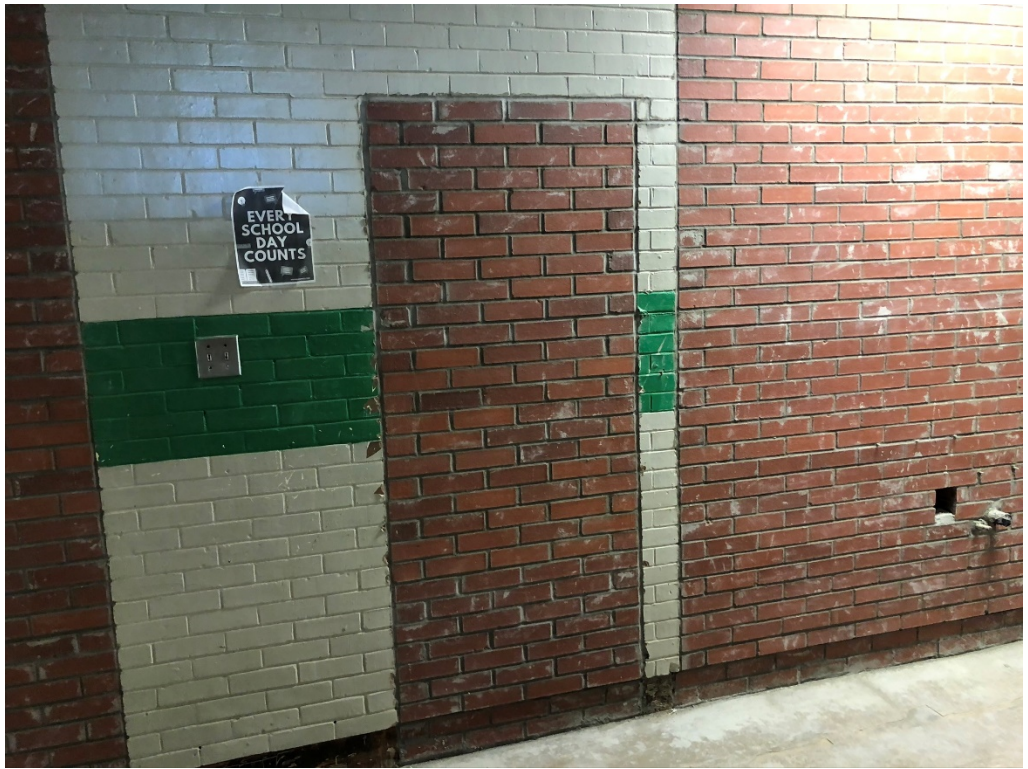


Figure 9 – New Brick at Chase in Corridor Wall

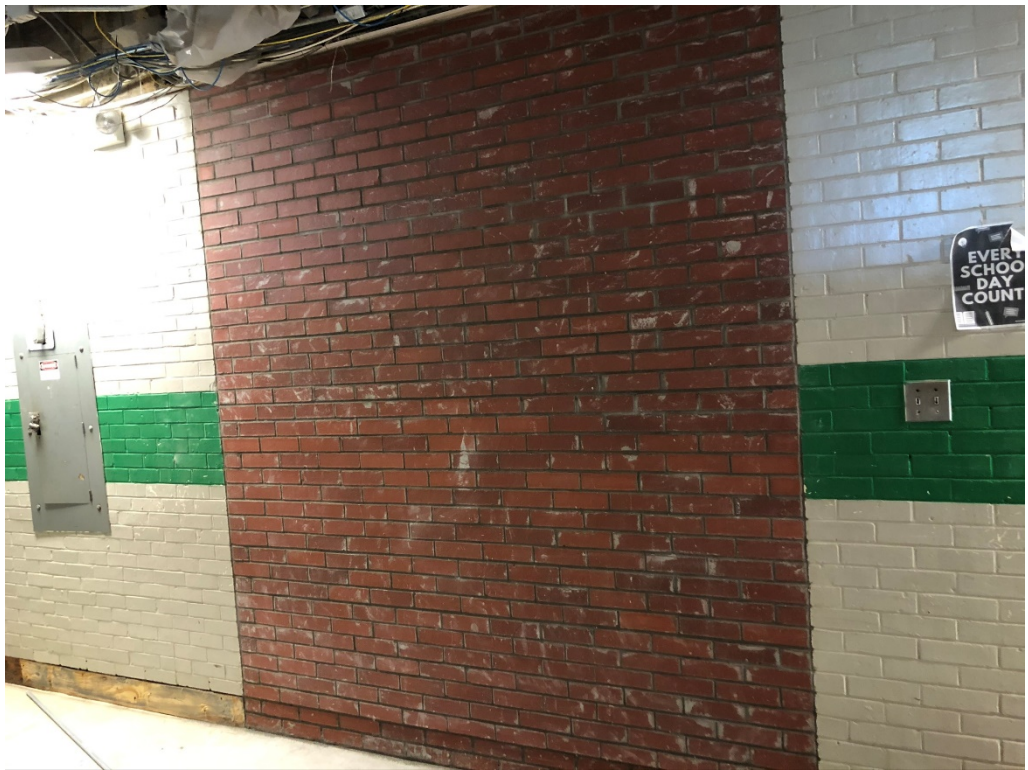


Figure 10 – New Brick at Chase in Corridor Wall



Figure 11 – New Tile at EDF's



Figure 12 – E217B Bathroom



Figure 13 – E217B Bathroom



Figure 14 – E217B Bathroom



Figure 15 – E217A Bathroom (crooked tile base needs to be reset for flush appearance)



Figure 16 – Tile Base needs to be reset and floor tile need a sliver of tile to make up gap



Figure 17 – E217A Bathroom



Figure 18 – E217A Bathroom



Figure 19 – E217A Bathroom (tile at top of wall needs to be reset)



Figure 20 – E103 Bathroom



Figure 21 –Pipe Installed



Figure 22 –Pipe Installed