

Architect's Field Report

201 Park Court, Suite B Ridgeland, MS 39157 P 601.790.9432 F 888.281.0547	26 June 2020 18053-Vicksburg Junior High School / Report Number 014
One Jackson Place, Suite 250 188 East Capitol Street Jackson, MS 39201-2100 P 601.352.5411 F 601.352.5362	Contract Paul Jackson & Son Date / Time 26 June 2020 / 12:30 PM Weather / Temp Drizzle / 81 ° F Est % Complete 24% Sched Conformance + 00 days Work in Progress Base Install VCT Install
161 Lameuse Street, Suite 201 Biloxi, MS 39530 P 228.374.1409 F 228.374.1414	Present at Site Paul Purser, DBA Observations Arriving on site, I entered the project through the east entry at the south hall. Workers were installing base in this area. I walked through project and found VCT installers at the lowest level working in classrooms. Items to Verify None Action Required None Report By:

Paul Purser, AIA, LEED AP
Dale | Bailey, an Association

cc: Austin Stults / Jeff Porter / Kipp Ready (PJS)
Chad Shealy / Shaquita Burke / Christi Kilroy (VWSD)
Gary Bailey / Jason Stewart / Mark Pipper (BPM)
Russ Blount / Candy Failor (DBA)
Brandon McKay / Austin Newell (WGK)
Jason Kackley / Al Guynes (GSK)
Chris Green / Larry Scott (TPS)
Tom Schaeffer / Tad Hoffpauir (SDG)



Figure 1 – Entry @ SE Corridor E-140



Figure 2 – Base Installation is Ongoing In south Hallway



Figure 3 – New Unwaxed Floor



Figure 4 – Stair Demo of Finishes



Figure 5 – Storage of Trash @ West Entry

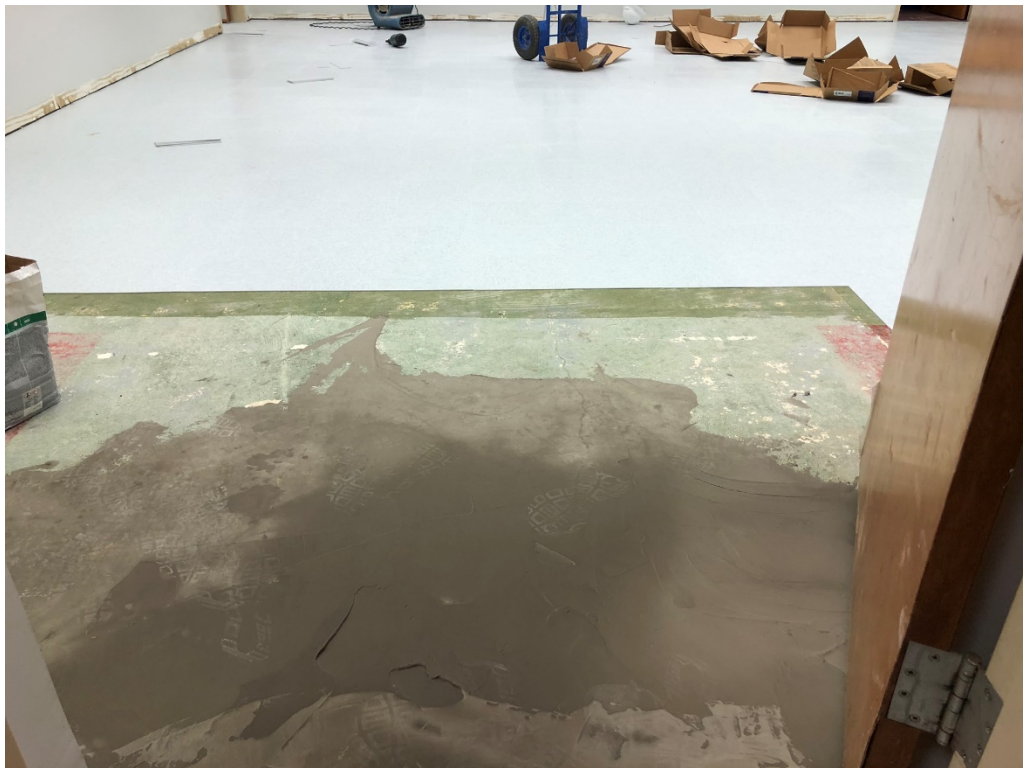


Figure 6 – Floor Prep and Install in ongoing @ the Lower Level Hall



Figure 7 – Floor Prep and Install in ongoing @ the Lower Level Hall



Figure 8 – Fixture Demo @ Lower Level Bathrooms



Figure 9 – Fixture Demo @ Lower Level Bathrooms



Figure 10 – Fixture Demo @ Lower Level Bathrooms



Figure 11 – Fixture Demo @ Lower Level Bathrooms



Figure 12 – Building Pad for Addition