

## Architect's Field Report

201 Park Court, Suite B  
Ridgeland, MS 39157  
P 601.790.9432  
F 888.281.0547

20 June 2020

18053-Vicksburg Junior High School / Report Number 013

One Jackson Place, Suite 250  
188 East Capitol Street  
Jackson, MS 39201-2100  
P 601.352.5411  
F 601.352.5362

Contract Paul Jackson & Son  
Date / Time 18 June 2020 / 9:30 AM  
Weather / Temp Clear / 86 ° F  
Est % Complete 24%  
Sched Conformance + 00 days  
Work in Progress None

161 Lameuse Street, Suite 201  
Biloxi, MS 39530  
P 228.374.1409  
F 228.374.1414

Present at Site Jeff Porter, Paul Jackson & Son  
Paul Purser, DBA

Observations Arriving, I met Mr. Porter at the Job Site trailer. He mentioned that things were going well without many delays.

I walked the site, starting at the main entry in the West Parking area where the addition is currently being laid out. Batter boards are up footings should be started soon.

Inside, I walked the main hall and noted painting has begun in the east wing as well as flooring install.

Continued work on the east bathrooms is ongoing. Framing has been performed and plumbing in ongoing in these areas.

Ductwork installers were performing pressure tests on their ducting while I was inside.

Walking the south hall, I reviewed paint work. There are many touch ups required as well as the cleaning of fixture plates. There are some coverage issues in several areas and many door jambs need to be re cut. I have included pictures in this report as examples, but this is not an exhaustive list.

Items to Verify None

Action Required None

Report By:

cc: Austin Stults / Jeff Porter / Kipp Ready (PJS)  
Chad Shealy / Shaquita Burke / Christi Kilroy (VWSD)  
Gary Bailey / Jason Stewart / Mark Pipper (BPM)  
Russ Blount / Candy Failor (DBA)  
Brandon McKay / Austin Newell (WGK)  
Jason Kackley / Al Guynes (GSK)  
Chris Green / Larry Scott (TPS)  
Tom Schaeffer / Tad Hoffpauir (SDG)





Figure 1 – Site Work is Ongoing



Figure 2 – Storm Sewer Installed





Figure 3 – Backfill Completed at Retaining Wall



Figure 4 – Paint work in the East Hall Classrooms



Figure 5 – Flooring at the East Hall



Figure 6 – Flooring Prep after Paint





Figure 7 – East Bathrooms



Figure 8 – East Bathrooms



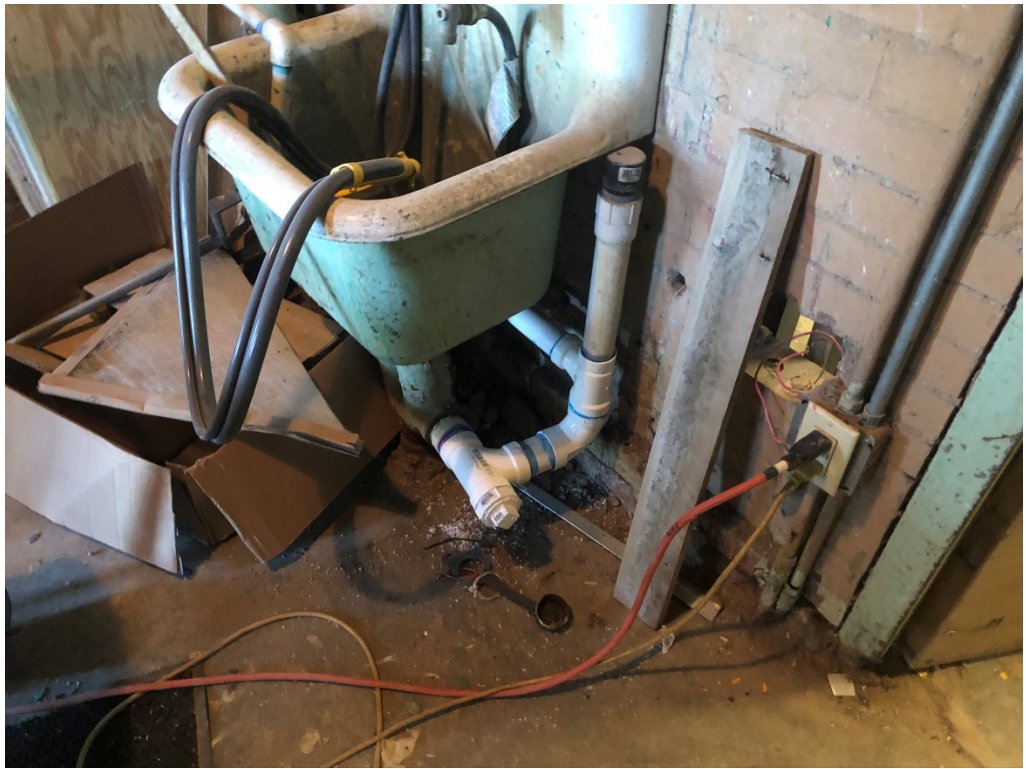


Figure 9 – Plumbing in MECH 215-B



Figure 10 – Plumbing in MECH 215-B

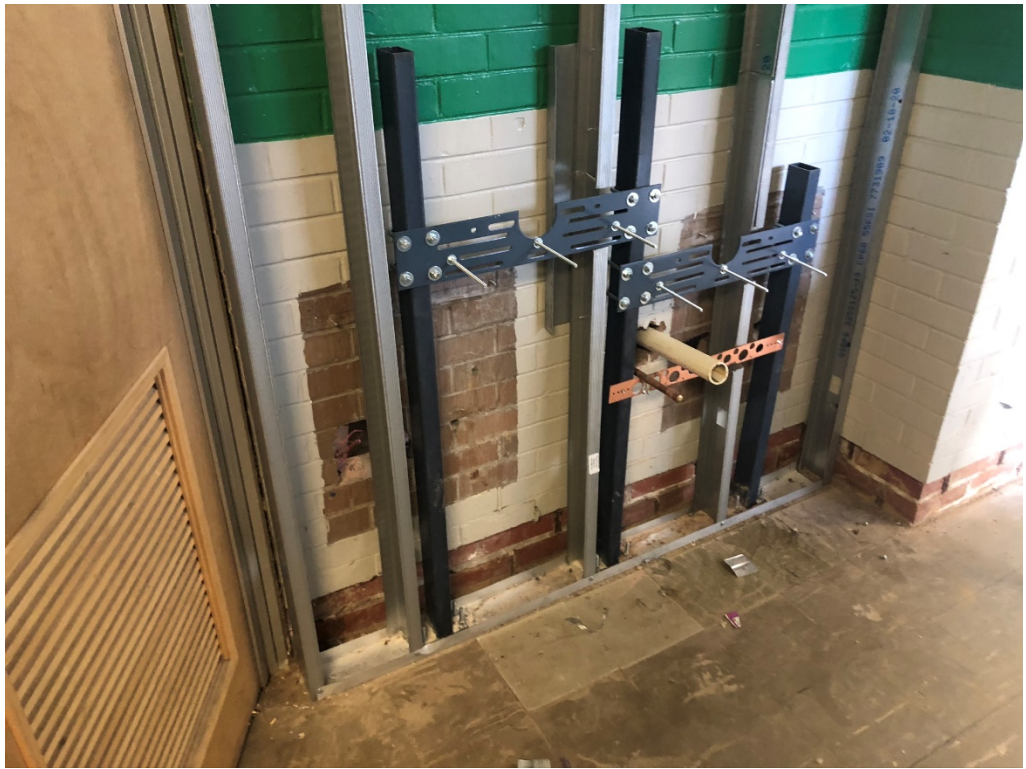


Figure 11 – New Wall at EDF's out side of MECH 215-B



Figure 12 – Flooring at the East Hall





Figure 13 – South Hall Door Jambs Need Touch Up



Figure 14 – Paint on Light Switch Covers (typical)



Figure 15 – Retaining Wall



Figure 16 – Non-Matching Colors at Many Wall Surfaces





Figure 17 – Paint on Light Switch Covers (typical)



Figure 18 – Pour Coverage Below Windows



Figure 19 – Incomplete Coverage in many places



Figure 20 – Pour Coverage Below Windows





Figure 21 – Pour Coverage



Figure 22 – Pour Coverage Above Door