

18 March 2021

18045-BOW Bowmar Elementary / Report Number 027

201 Park Court, Suite B
Ridgeland, MS 39157
P 601.790.9432
F 888.281.0547

One Jackson Place, Suite 250
188 East Capitol Street
Jackson, MS 39201-2100
P 601.352.5411
F 601.352.5362

161 Lameuse Street, Suite 201
Biloxi, MS 39530
P 228.374.1409
F 228.374.1414

Contract Paul Jackson & Son
Date / Time 18 March 2021 / 10:30 AM
Weather / Temp Cloudy / 51 ° F
Est % Complete 70%
Sched Conformance +/- 00 days

Work in Progress Storefront Installation
HVAC Demo and Install
Electrical Work
Stucco Work
Drywall Finishing

Present at Site Jimmy White, PJS
James Brock, PJS
Weekly Meeting Attendees
Paul Purser, DBA

Observations Arriving on site, I met Jimmy White at the entry to the school. He was finishing up the installation of a rumble strip at the ADA Parking Pad. We walked in together and discussed progress.

Most interior HVAC units have been demoed, but pipes and hangers still require removal and walls still need patching. Most new interior units should be operational.

At the addition, storefront in quite far along and nearly complete. Stucco work has begun. Finish work at drywall has also begun.

Items to Verify None

Action Required None

Report By:

Paul Purser, AIA, LEED AP
Dale | Bailey, an Association

cc: James Brock / Jimmy White (PJS)
Chad Shealy / Bill Sanderford (VWSD)
Gary Bailey / Jason Stewart / Mark Pipper (BPM)
Russ Blount / Travis Altsman / Abigail Raper / Candy Failor (DBA)
Tom Schaeffer / Will Grigg (M)
Kevin Starks / Jason Kackley / Al Guynes (GSK)
Chris Green / Larry Scott (TPS)



Figure 1 – Rumble Strip Installed at ADA Parking Pad

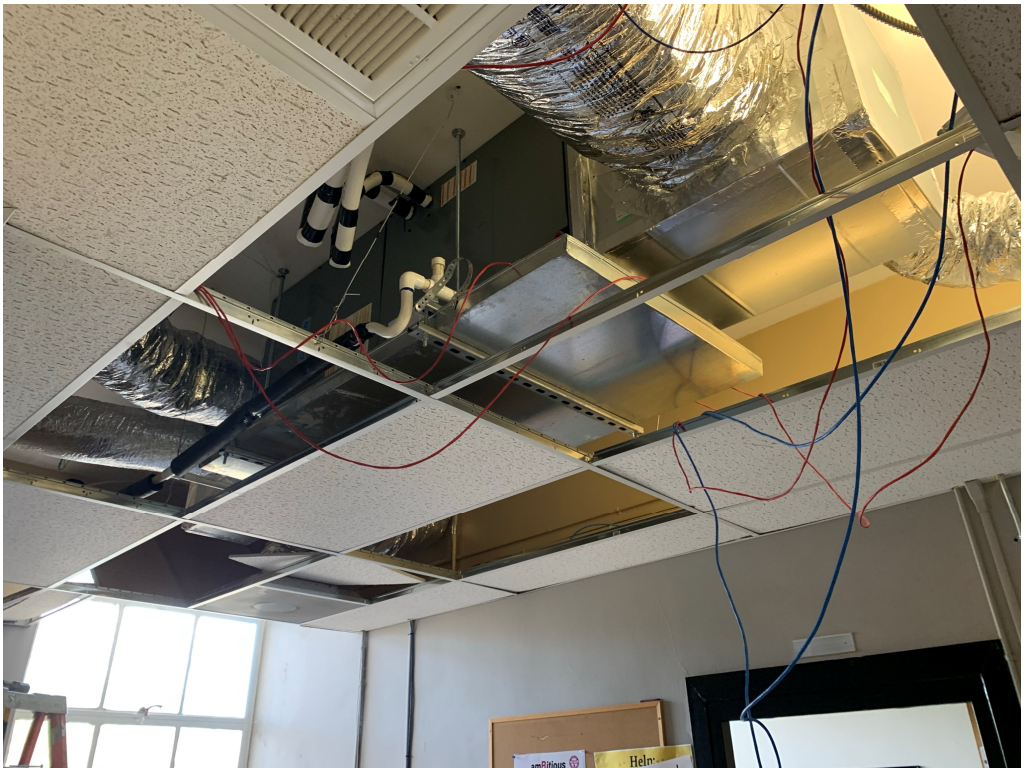


Figure 2 – HVAC Unit Installed at Office



Figure 3 – HVAC Unit Removal at Classroom nearly complete



Figure 4 – Installed Concrete



Figure 5 – Installed Concrete



Figure 6 – Installed Concrete



Figure 7 – Brick Washed



Figure 8 – Brick Washed



Figure 9 – Stucco Lathe Installed



Figure 10 – Stucco Lathe Installed



Figure 11 – Drywall Finishing in Progress



Figure 12 – Drywall Finishing in Progress



Figure 13 – Bathroom Drywall Installed



Figure 14 – Bathroom Drywall Installed



Figure 15 – Storefront at Connector Hall



Figure 16 – Storefront at Brick Corner



Figure 17 – Damaged Ceiling Grid IN cafeteria Requires Replacement



Figure 18 – Damaged Ceiling Grid IN cafeteria Requires Replacement