

21 November 2020

18045-BOW Bowmar Elementary / Report Number 019

201 Park Court, Suite B Ridgeland, MS 39157 P 601.790.9432 F 888.281.0547	Contract	Paul Jackson & Son
	Date / Time	20 November 2020 / 12:00 PM
	Weather / Temp	Clear / 63 ° F
	Est % Complete	45%
	Sched Conformance	+/- 00 days
One Jackson Place, Suite 250 188 East Capitol Street Jackson, MS 39201-2100 P 601.352.5411 F 601.352.5362	Work in Progress	None
	Present at Site	Paul Purser, DBA
	Observations	Arriving on site, I entered through the front entry to the building and made my way to the rear addition. Steel work here is ongoing. Caution tape has been installed in several locations to limit access.
161 Lameuse Street, Suite 201 Biloxi, MS 39530 P 228.374.1409 F 228.374.1414		Around the addition, select fill has been installed in preparation for new concrete sidewalk. Joints at these locations have also been installed as well as some rebar.
	Items to Verify	None
	Action Required	None
	Report By:	

Paul Purser, AIA, LEED AP
Dale | Bailey, an Association

cc: James Brock / Jimmy White (PJS)
Chad Shealy / Shaquita Burke / Bill Sanderford (VWSD)
Gary Bailey / Jason Stewart / Mark Pipper (BPM)
Russ Blount / Travis Altsman / Abigail Raper / Candy Failor (DBA)
Tom Schaeffer / Will Grigg (M)
Kevin Starks / Jason Kackley / Al Guynes (GSK)
Chris Green / Larry Scott (TPS)



Figure 1 – Entry to New Addition Through Passage 116



Figure 2 – Steel Erected over Newly poured Slab



Figure 3 – Steel Erected over Newly poured Slab



Figure 4 – Steel Erected over Newly poured Slab



Figure 5 – Steel Erected over Newly poured Slab



Figure 6 – Steel Erected over Newly poured Slab



Figure 7 – Steel Erected over Newly poured Slab



Figure 8 – Select Fill Installed at To-Be Location of New Sidewalks



Figure 9 – Select Fill Installed at To-Be Location of New Sidewalks



Figure 10 – Steel Erection is Ongoing



Figure 11 – Steel Erection is Ongoing



Figure 12 – Select Fill Installed at To-Be Location of New Sidewalks

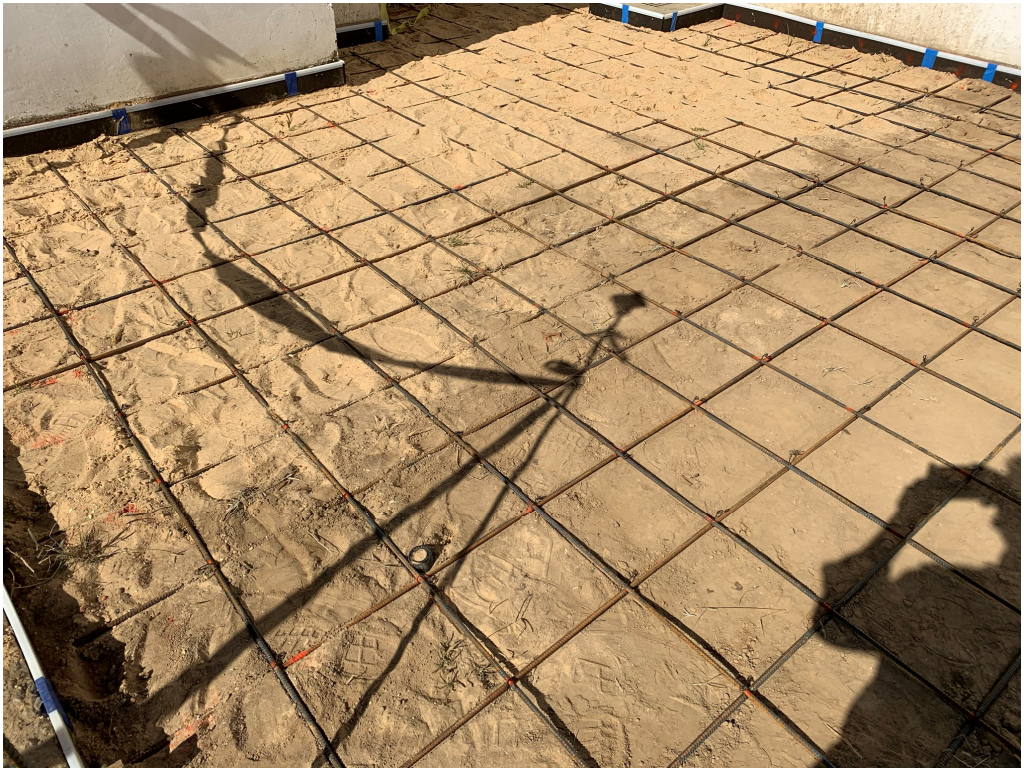


Figure 13 – Rebar Made up (lift rebar on chairs before pour)

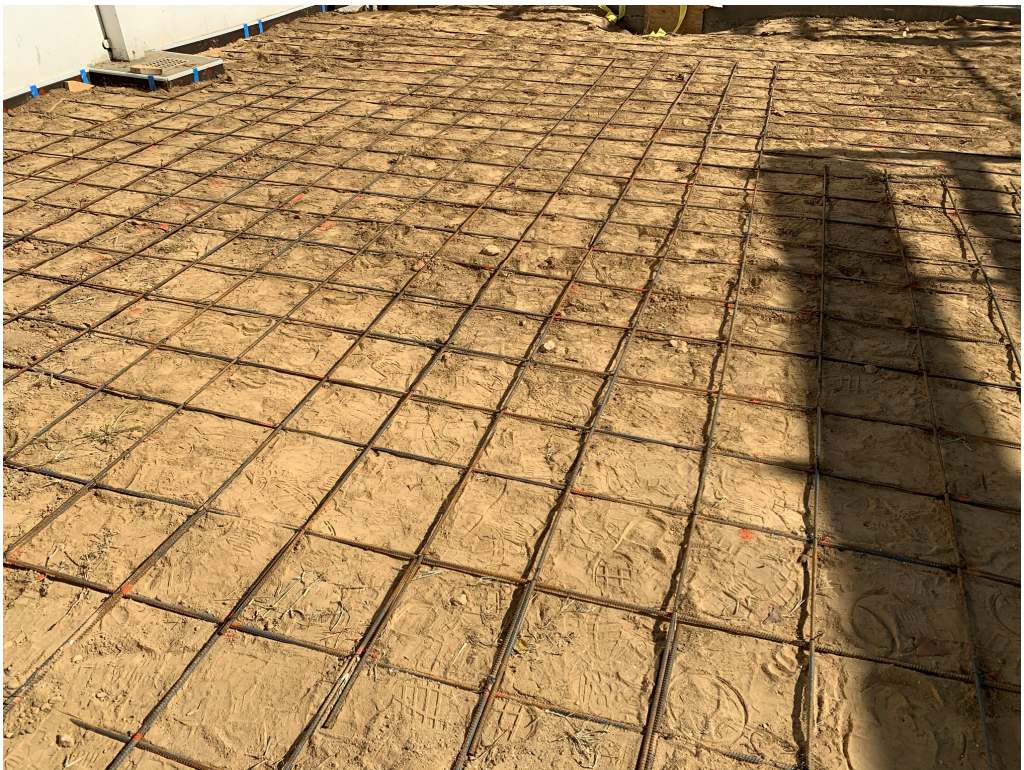


Figure 14 – Rebar Made up (lift rebar on chairs before pour)