

Architect's Field Report

201 Park Court, Suite B Ridgeland, MS 39157 P 601.790.9432 F 888.281.0547	18 September 2020
One Jackson Place, Suite 250 188 East Capitol Street Jackson, MS 39201-2100 P 601.352.5411 F 601.352.5362	18044-Bovina Elementary / Report Number 024
161 Lameuse Street, Suite 201 Biloxi, MS 39530 P 228.374.1409 F 228.374.1414	Contract Paul Jackson & Son Date / Time 16 September 2020 / 2:00 PM Weather / Temp Partly cloudy / 85 ° F Est % Complete 74% Sched Conformance + 00 days Work in Progress Storefront Install Firewall Installation Present at Site Richard Creel, Paul Jackson & Son Paul Purser, DBA Observations I arrived on site when school was letting out. Workers at the rear addition were operating within the project bounds without disturbing school dismissal. Storefront installers were finishing up installing the final window unit, carefully fitting the aluminum frame into the existing brick opening. Brick masons still have to come and complete brick sills. Inside, framers were completing light gauge stud framing and drywall installation for the fire wall to be installed between the existing structure and the new addition. Items to Verify None Action Required none Report By:

Paul Purser, AIA, LEED AP
Dale | Bailey, an Association

cc: Matthew Goodwin / Richard Creel / Chasity Cupstid (PJS)
Chad Shealy / Shaquita Burke / Christi Kilroy (VWSD)
Gary Bailey / Jason Stewart / Mark Pipper (BPM)
Russ Blount / Candy Failor (DBA)
Brandon McKay / Austin Newell (WGK)
Jason Kackley / Al Guynes (GSK)
Chris Green / Larry Scott (TPS)
Jerry Montgomery (SM)

dalepartners.com

baileyarch.com

Architects Who Know Education



Figure 1 – Soffit Framing and Sheathing is Complete



Figure 2 – Soffit Framing and Sheathing is Complete



Figure 3 – Storefront Install Ongoing



Figure 4 – Most Windows are Complete



Figure 5 – Storefront Window Installed



Figure 6 – Soffit Work



Figure 7 – Workers Setting Scaffold for Exterior Finish Work



Figure 8 – Soffit Framing and Sheathing Installed



Figure 9 – Storefront Installed



Figure 10 – Brick Work at Entry Setback



Figure 11 – Brick Work at Entry Setback



Figure 12 – Interior Firewall Installed

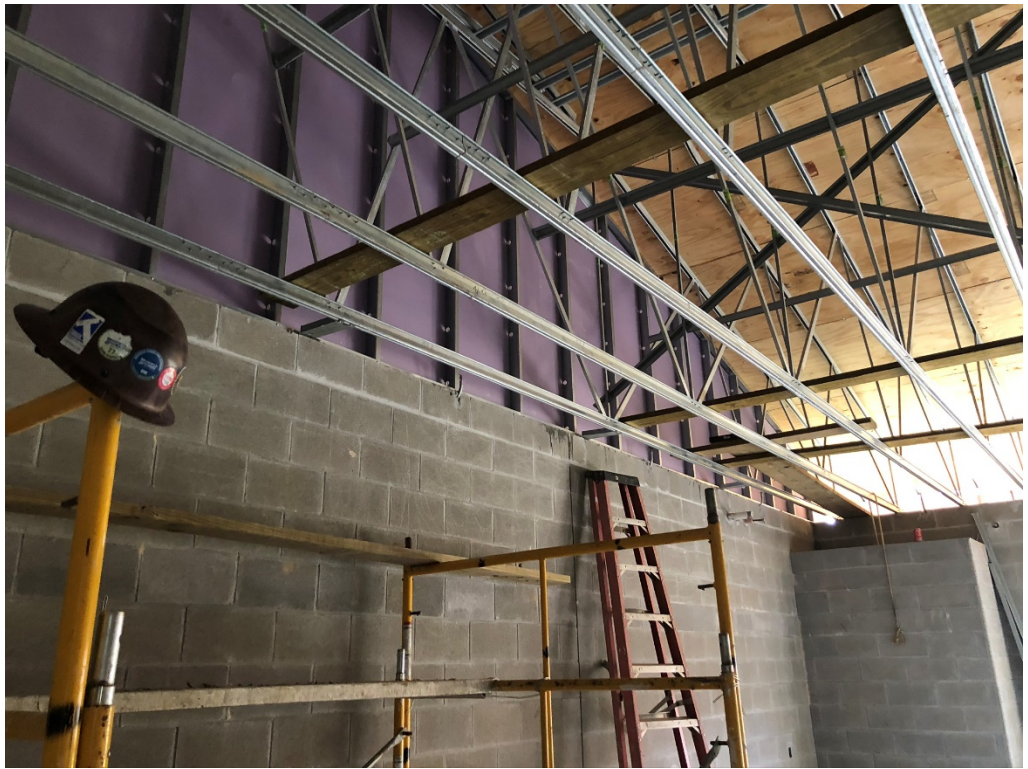


Figure 13 – Interior Firewall Installed



Figure 14 – Interior Firewall Installation