

Architect's Field Report

201 Park Court, Suite B
Ridgeland, MS 39157
P 601.790.9432
F 888.281.0547

19 February 2020

18044-Bovina Elementary / Report Number 001

One Jackson Place, Suite 250
188 East Capitol Street
Jackson, MS 39201-2100
P 601.352.5411
F 601.352.5362

Contract Paul Jackson & Son
Date / Time 18 February 2020 / 4:05 PM
Weather / Temp Overcast / 73 ° F
Est % Complete 5%
Sched Conformance + 00 days
Work in Progress Ceiling Install

161 Lameuse Street, Suite 201
Biloxi, MS 39530
P 228.374.1409
F 228.374.1414

Present at Site Ceiling Installers
School Staff
Richard Creel, PJS
Paul Purser, DBA

Observations Arriving, I walked met the Lead Teacher, Stephanie Leist. She mentioned that most of the work has been in the South Corridor, but that some work has been done in the North Wing as well.

Ceiling installation was ongoing in the South Corridor. Demo has been performed in all of the ceiling in the South Corridor and adjoining classrooms.

On the Northwest corner of the site, I met Richard Creel who was setting up temporary lights for outside work. He mentioned that the weather was prohibiting him from beginning footing work for the addition in this location. He also mentioned that after removing base board in the south hallway, it was discovered that additional substrate was needed for installing rubber base.

Items to Verify None

Action Required None

Report By:

Paul Purser, AIA, LEED AP, Partner
Dale | Bailey, an Association

cc: Matthew Goodwin / Richard Creel (PJS)
Chad Shealy / Shaquita Burke / Christi Kilroy (VWSD)
Gary Bailey / Jason Stewart / Mark Pipper (BPM)
Russ Blount / Candy Failor (DBA)
Brandon McKay / Austin Newell (WGK)
Jason Kackley / Al Guynes (GSK)
Chris Green / Larry Scott (TPS)
Jerry Montgomery (SM)

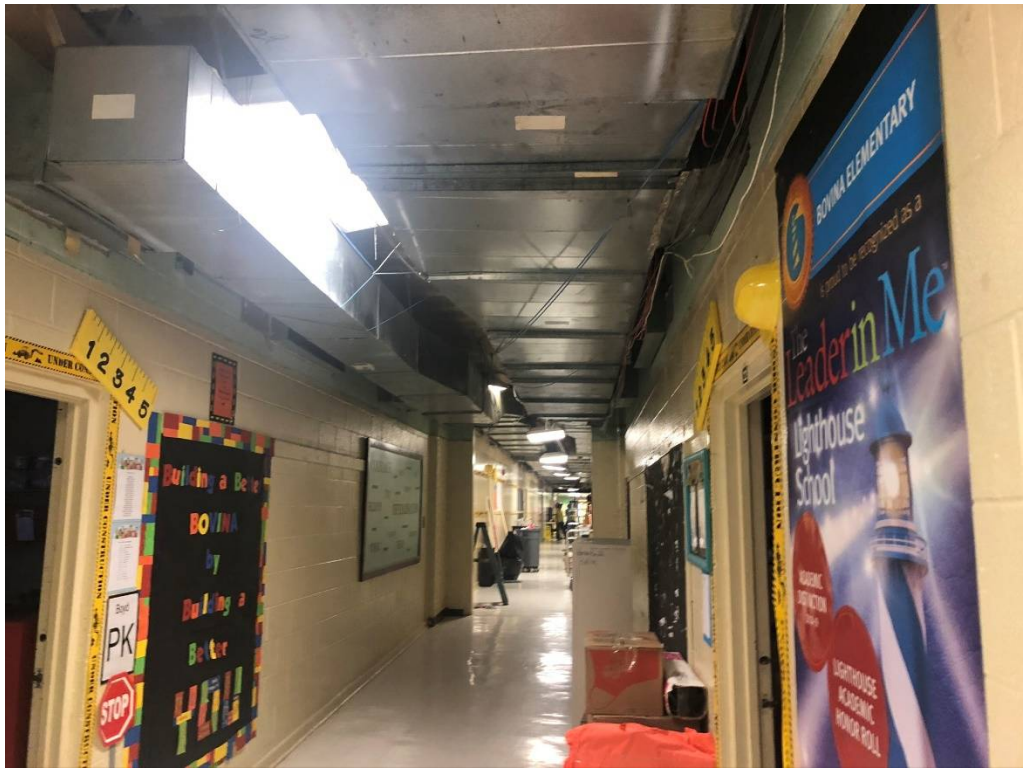


Figure 1 – South West Corridor Ceiling Demoed



Figure 2 – Class 1 Demo



Figure 3 – T9 Demo



Figure 4 – T7 Demo



Figure 5 – Class 6 Demo



Figure 6 – Lower Section of Drywall Requires Smooth/Solid Backing for Rubber Base Install



Figure 7 – Class 7 Demo

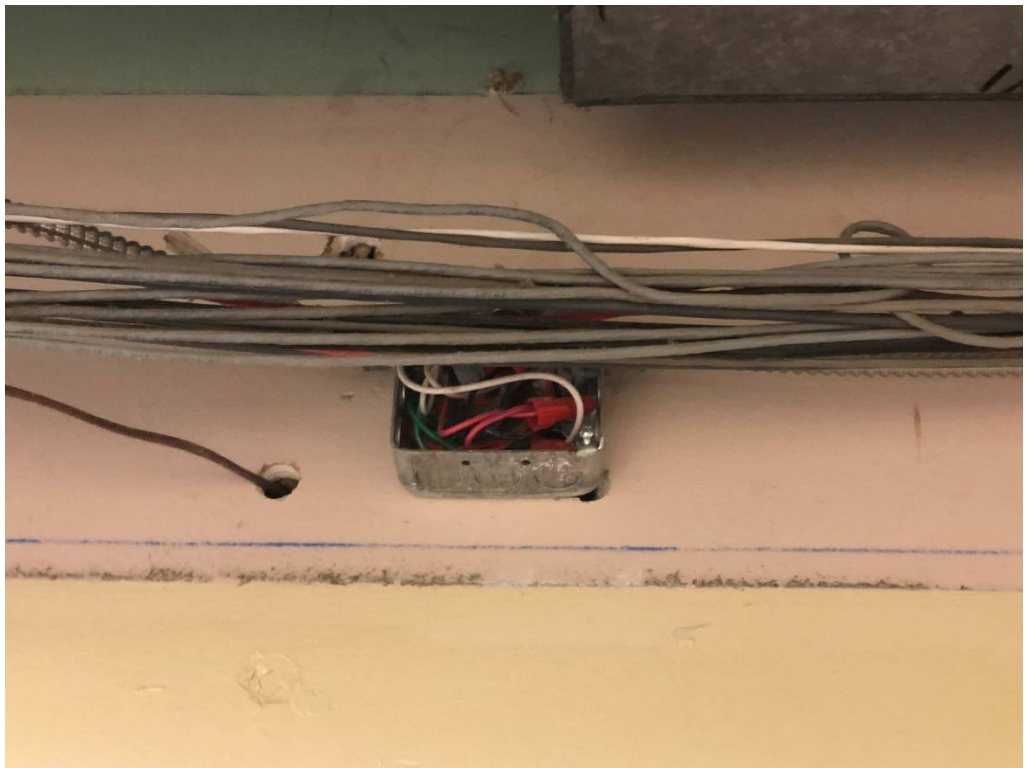


Figure 8 – Electrical Box Requires Plate Before Closing In Ceiling



Figure 9 – Class 2 Demo



Figure 10 – Class 8 Demo



Figure 11 – Class 3 Demo



Figure 12 – Class 9 Demo



Figure 13 – Class 5 Demo



Figure 14 – T1 Demo



Figure 15 – T2 Demo

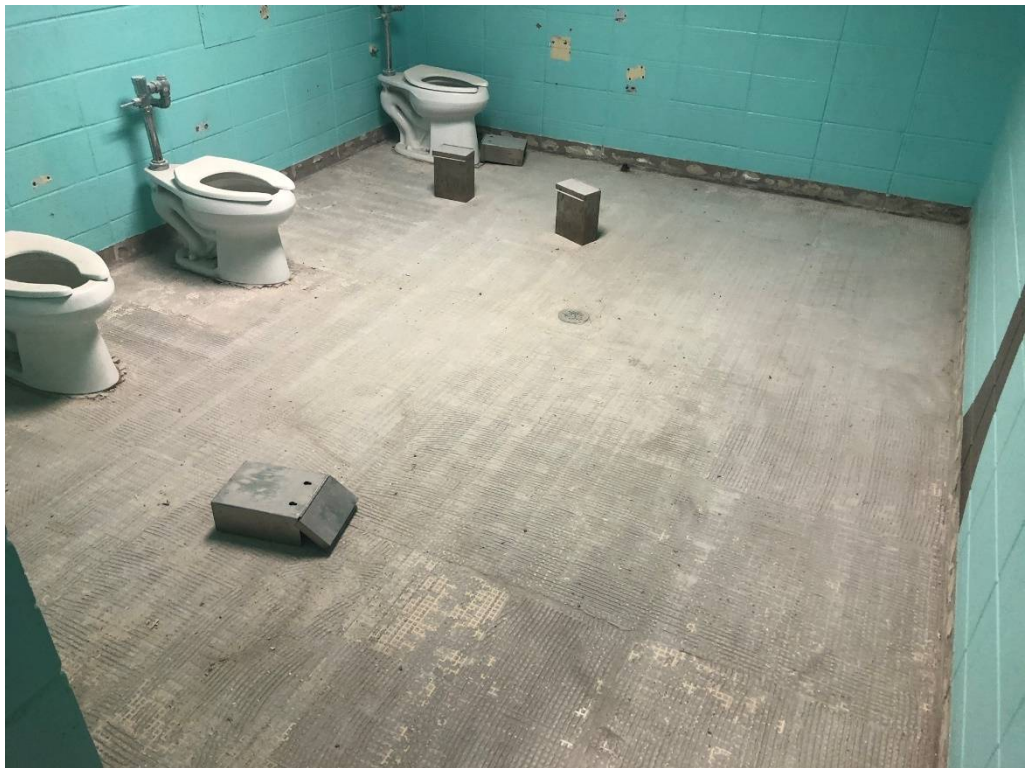


Figure 16 – T2 Demo



Figure 17 – North Corridor Partial Demo



Figure 18 – Construction Trailer & Staging at North West Section of Site