

## Architect's Field Report

201 Park Court, Suite B  
Ridgeland, MS 39157  
P 601.790.9432  
F 888.281.0547

26 February 2020

18043-BW Beechwood Elementary / Report Number 023

One Jackson Place, Suite 250  
188 East Capitol Street  
Jackson, MS 39201-2100  
P 601.352.5411  
F 601.352.5362

Contract Thrash Construction  
Date / Time 25 February 2020 / 3:20 PM  
Weather / Temp Sunny and clear / 63 ° F  
Est % Complete 71%  
Sched Conformance +/- 00 days  
Work in Progress None

161 Lameuse Street, Suite 201  
Biloxi, MS 39530  
P 228.374.1409  
F 228.374.1414

Present at Site School Staff  
Paul Purser, DBA

Observations Arriving on site, I spoke with receptionists. She mentioned that the smell from the epoxy floor installations was causing issues to people with asthma and a pregnant teacher. She requested that flooring install to happen at the beginning of the week end.

I reviewed installation of epoxy. For the most part it looked good, however, there are some repairs needed: I noted in images below.

Items to Verify None

Action Required None

Report By:

Paul Purser, AIA, LEED AP, Partner  
Dale | Bailey, an Association

cc: Luke Walker (TC)  
Chad Shealy / Shaquita Burke / Bill Sanderford (VWSD)  
Gary Bailey / Jason Stewart / Mark Pipper (BPM)  
Russ Blount / Shelby Mitchell / Candy Failor (DBA)  
Blake Mendrop (M)  
Jason Kackley / Al Guynes (GSK)  
Chris Green / Larry Scott (TPS)



Figure 1 – Building 3 Boys Room



Figure 2 – Corner Cut In's Look Good



Figure 3 – Paint Over Door Stop (typical)

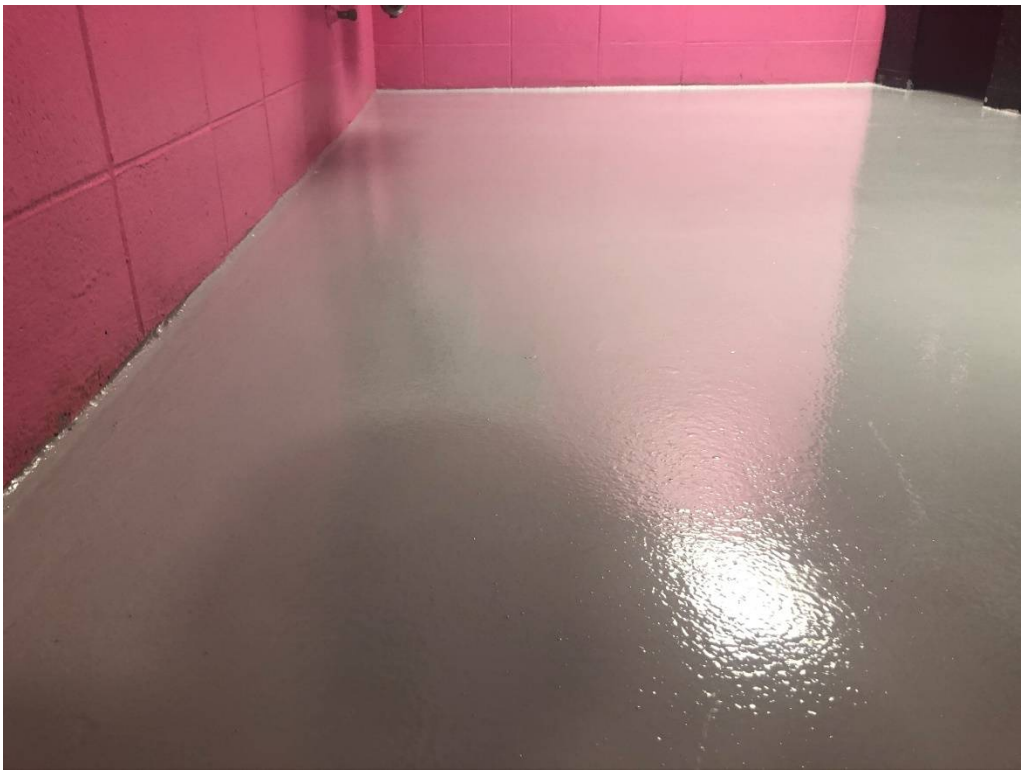


Figure 4 – Building 3 Girls



Figure 5 – Building 2 Gym (T06): discolored drips evident after install



Figure 6 – T06

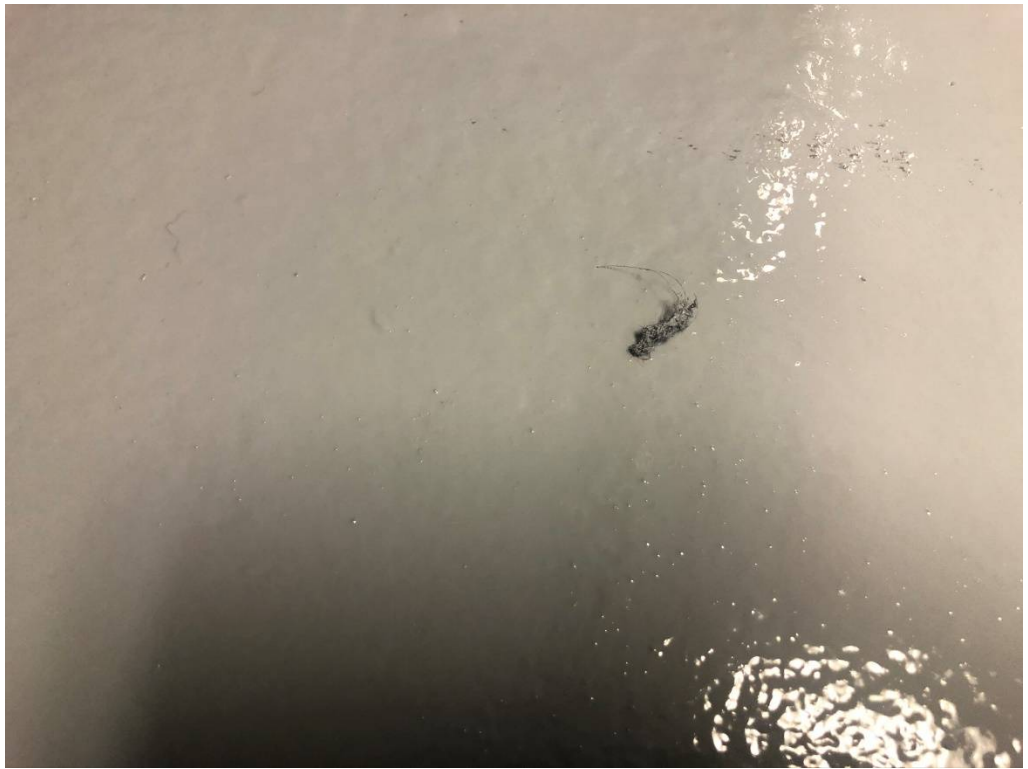


Figure 7 – T06: debris left embedded in Epoxy



Figure 8 – Painted Door Stops



Figure 9 – Additional Coat Required in T06 for Full Coverage



Figure 10 – Additional Coat Required in T06 for Full Coverage



Figure 11 – Additional Coat Required in T06 for Full Coverage



Figure 12 – Paint on Drain Cover in T06



Figure 13 – Paint on Threshold in T06

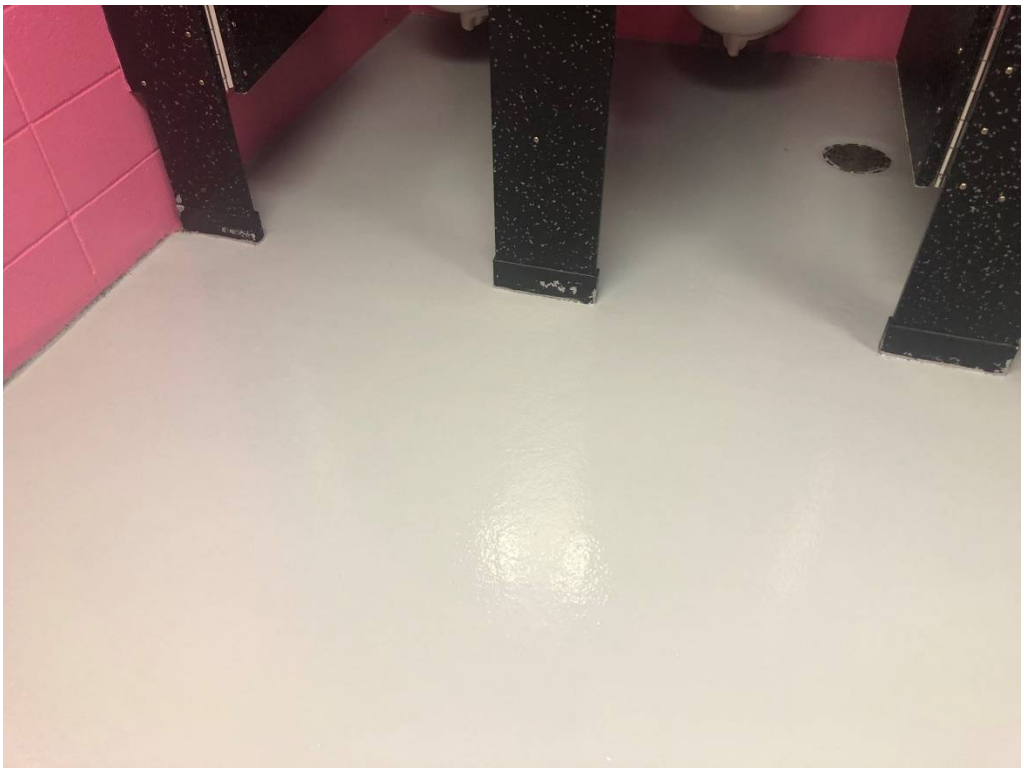


Figure 14 – Girls Bathroom in Building 1 (Paint on Partitions Existed Before Install)