

## Architect's Field Report

201 Park Court, Suite B  
Ridgeland, MS 39157  
P 601.790.9432  
F 888.281.0547

19 February 2020

18043-BW Beechwood Elementary / Report Number 022

One Jackson Place, Suite 250  
188 East Capitol Street  
Jackson, MS 39201-2100  
P 601.352.5411  
F 601.352.5362

Contract Thrash Construction  
Date / Time 18 February 2020 / 3:12 PM  
Weather / Temp Overcast / 73 ° F  
Est % Complete 71%  
Sched Conformance +/- 00 days  
Work in Progress None

161 Lameuse Street, Suite 201  
Biloxi, MS 39530  
P 228.374.1409  
F 228.374.1414

Present at Site School Staff  
Paul Purser, DBA

Observations Arriving on site, I reviewed progress. Lenses have been swapped out as marked last week. Some lights are crooked this week that were not before in Corridor Space.

Items to Verify None

Action Required None

Report By:

Paul Purser, AIA, LEED AP, Partner  
Dale | Bailey, an Association

cc: Luke Walker (TC)  
Chad Shealy / Shaquita Burke / Bill Sanderford (VWSD)  
Gary Bailey / Jason Stewart / Mark Pipper (BPM)  
Russ Blount / Shelby Mitchell / Candy Failor (DBA)  
Blake Mendrop (M)  
Jason Kackley / Al Guynes (GSK)  
Chris Green / Larry Scott (TPS)



Figure 1 – Crooked Lights in Corridor Near Room RM 110

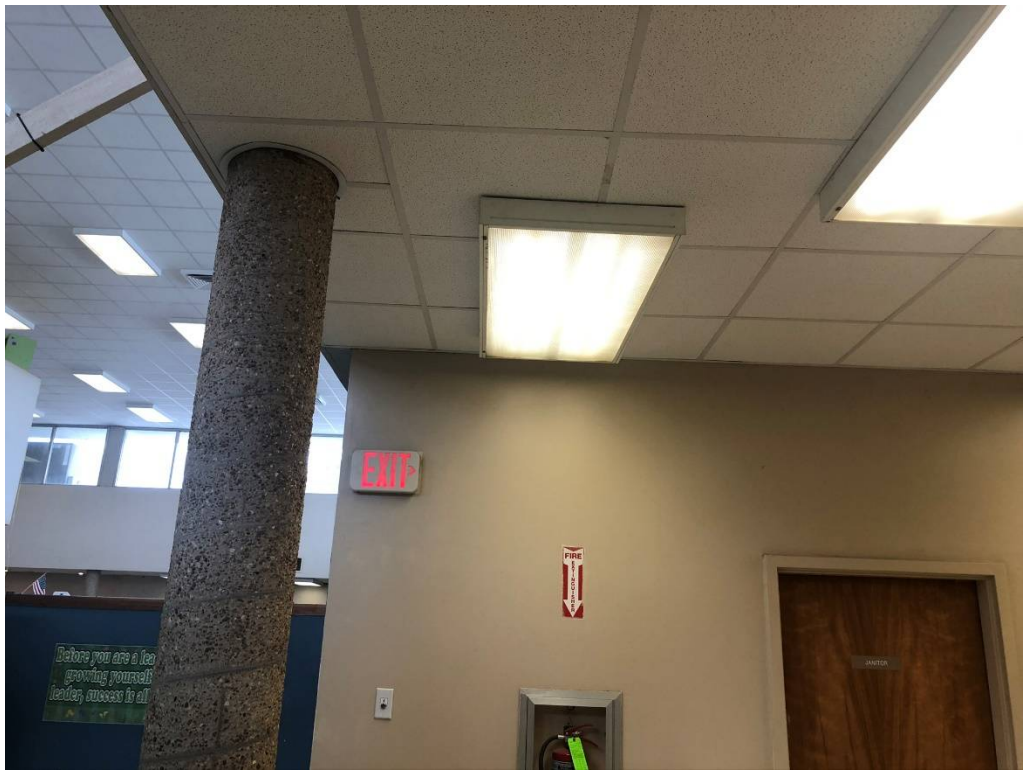


Figure 2 – Crooked Lights in Corridor Near Room RM 110



Figure 3 – Tape on FRP from install