

## Architect's Field Report

201 Park Court, Suite B  
Ridgeland, MS 39157  
P 601.790.9432  
F 888.281.0547

04 February 2020

18043-BW Beechwood Elementary / Report Number 020

One Jackson Place, Suite 250  
188 East Capitol Street  
Jackson, MS 39201-2100  
P 601.352.5411  
F 601.352.5362

Contract Thrash Construction  
Date / Time 04 February 2020 / 7:30 AM  
Weather / Temp Overcast / 64 ° F  
Est % Complete 71%  
Sched Conformance +/- 00 days  
Work in Progress None

161 Lameuse Street, Suite 201  
Biloxi, MS 39530  
P 228.374.1409  
F 228.374.1414

Present at Site School Staff  
OAC Meeting Attendants  
Paul Purser, DBA

Observations I arrived early to walk the building with Luke Walker and review light lens cover replacements. We discussed replacing based on a couple of different criteria: cracked, broken, chip & discoloration in a square edged pattern (not necessarily due to water but rather to some adhesive). In our monthly meeting, we agreed that I should go through the school and put a physical mark on lenses to be replaced.

We also discussed the necessity of getting a punch list together for plumbing as that section of work is complete and in regular use by the school.

Frp in vestibules has been installed (minus corner guards). Toilet Partitions are complete and in good order.

Items to Verify None

Action Required None

Report By:

Paul Purser, AIA, LEED AP, Partner  
Dale | Bailey, an Association

cc: Luke Walker (TC)  
Chad Shealy / Shaquita Burke / Bill Sanderford (VWSD)  
Gary Bailey / Jason Stewart / Mark Pipper (BPM)  
Russ Blount / Shelby Mitchell / Candy Failor (DBA)  
Blake Mendrop (M)  
Jason Kackley / Al Guynes (GSK)  
Chris Green / Larry Scott (TPS)

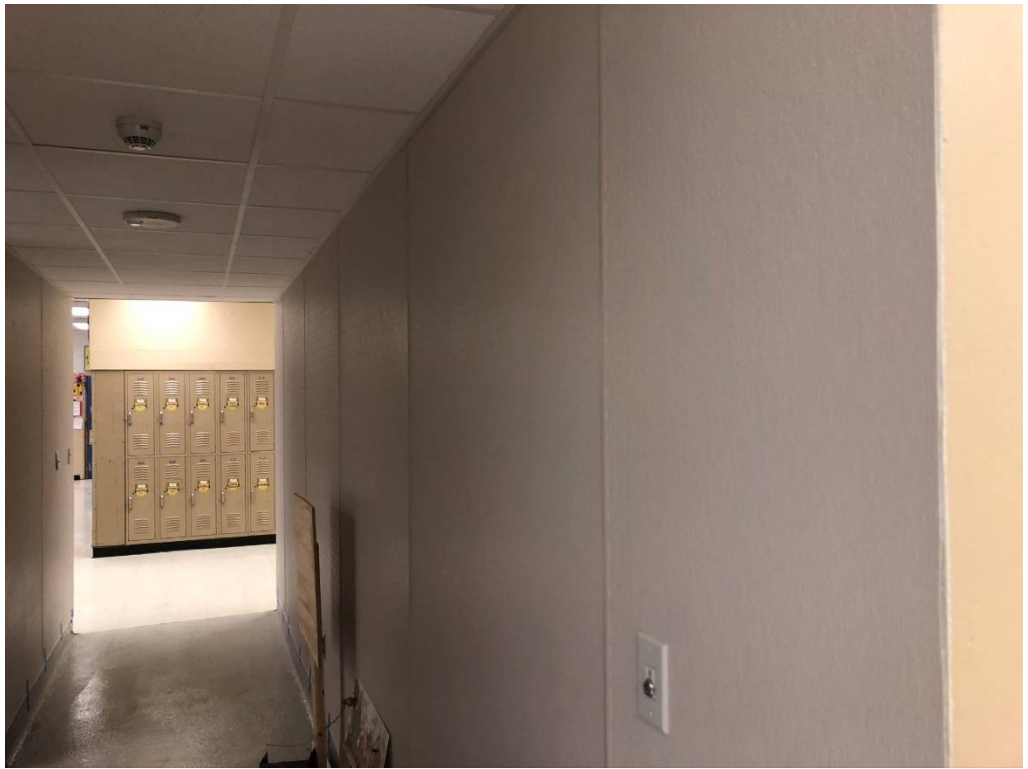


Figure 1 – FRP installed at Vestibules



Figure 2 – FRP Corner



Figure 3 – Damage at Aluminum Threshold in Gym

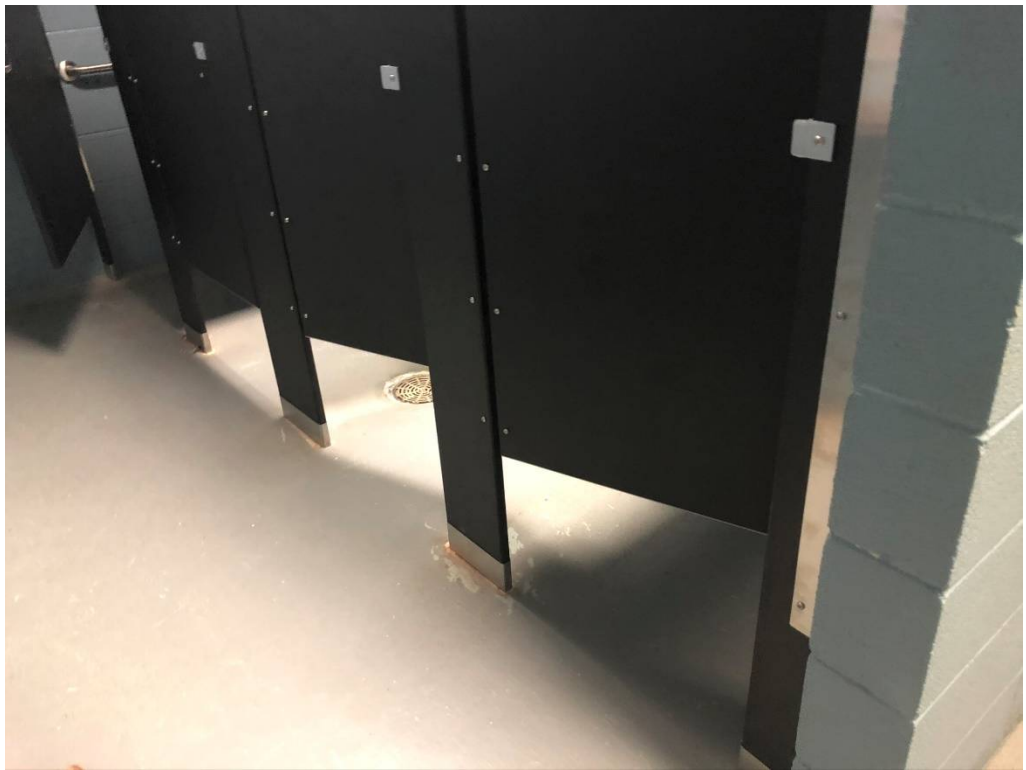


Figure 4 – New toilet Partitions (typical)

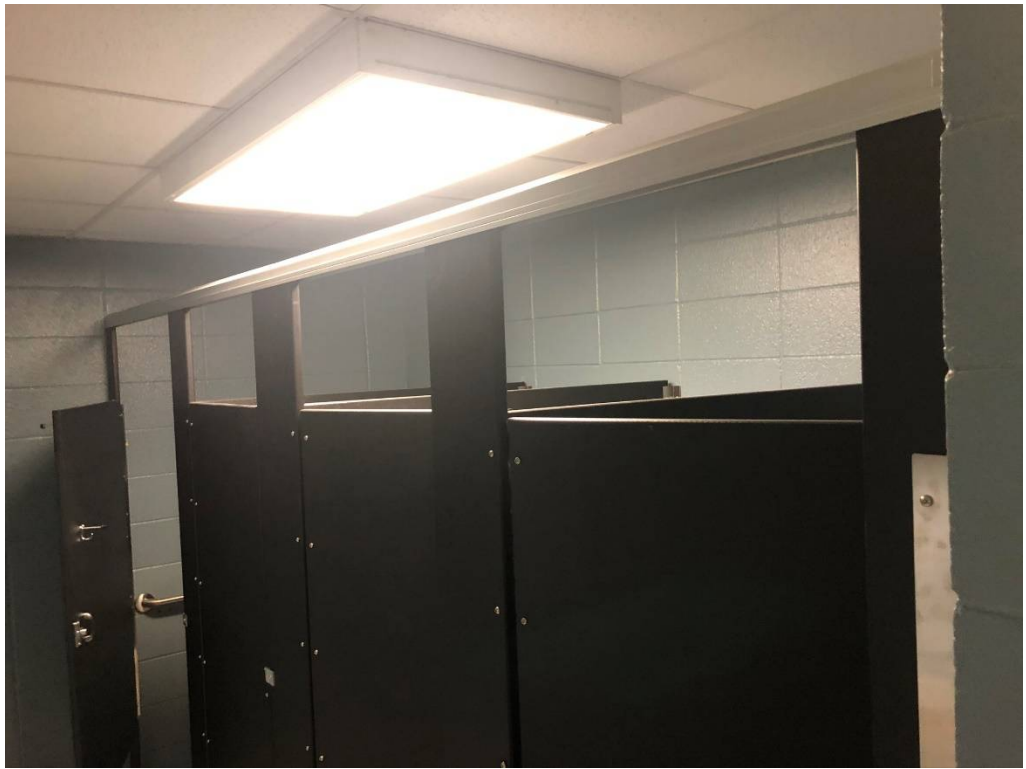


Figure 5 – New toilet Partitions (typical)



Figure 6 – Damage to New Laminate Counter



Figure 7 – Exposure at Door Jamb in Building 1 Vestibule



Figure 8 –Upper Corner FRP Kicked Up