

Architect's Field Report

201 Park Court, Suite B
Ridgeland, MS 39157
P 601.790.9432
F 888.281.0547

15 November 2019

18043-BW Beechwood Elementary / Report Number 009

One Jackson Place, Suite 250
188 East Capitol Street
Jackson, MS 39201-2100
P 601.352.5411
F 601.352.5362

Contract Thrash Construction
Date / Time 14 November 2019 / 3:30 PM
Weather / Temp Overcast / 45 ° F
Est % Complete 25%
Sched Conformance +/- 00 days
Work in Progress None

161 Lameuse Street, Suite 201
Biloxi, MS 39530
P 228.374.1409
F 228.374.1414

Present at Site School Receptionists
Paul Purser, DBA

Observations I arrived at Beechwood as School let out. I walked Building 1 and then 3, inspecting ceiling installation.

Building 1 Bathrooms have ceiling tile installed.

Demolition and Reinstallation has continued in Building 3.

Items to Verify Confirm Timeline for Clean and Paint of Vents. (Figure 2)
Confirm Timeline for Reinstallation of Sensor. (Figure 5)
Confirm Timeline for Reinstallation of Speaker. (Figure 7)
Confirm Acceptability of Discolored Ceiling Tiles. (Figure 11)

Action Required Repair/Replace Deformed Corner. (Figure 12)

Report By:

Paul Purser, AIA, LEED AP, Partner
Dale | Bailey, an Association

cc: Luke Walker (TC)
Chad Shealy / Shaquita Burke / Bill Sanderford (VWSD)
Gary Bailey / Jason Stewart / Mark Pipper (BPM)
Russ Blount / Shelby Mitchell / Candy Failor (DBA)
Blake Mendrop (M)
Jason Kackley / Al Guynes (GSK)
Chris Green / Larry Scott (TPS)



Figure 1 – Building 1 Bathrooms Completed



Figure 2 – Confirm Timeline on Clean and Repaint of vents



Figure 3 – Building 1 Bathroom



Figure 4 – Building 1 Bathroom



Figure 5 – Confirm what is issue with this not installed in Building 1 Corridor North Corner



Figure 6 – Building 1 North Entry Water Damage



Figure 7 – Confirm when existing speaker shall be installed to tile



Figure 8 – Building 3 Reinstallation (Typical)



Figure 9 – Building 3 Demolition (Typical)



Figure 10 – Vent Awaiting New Tile Surround

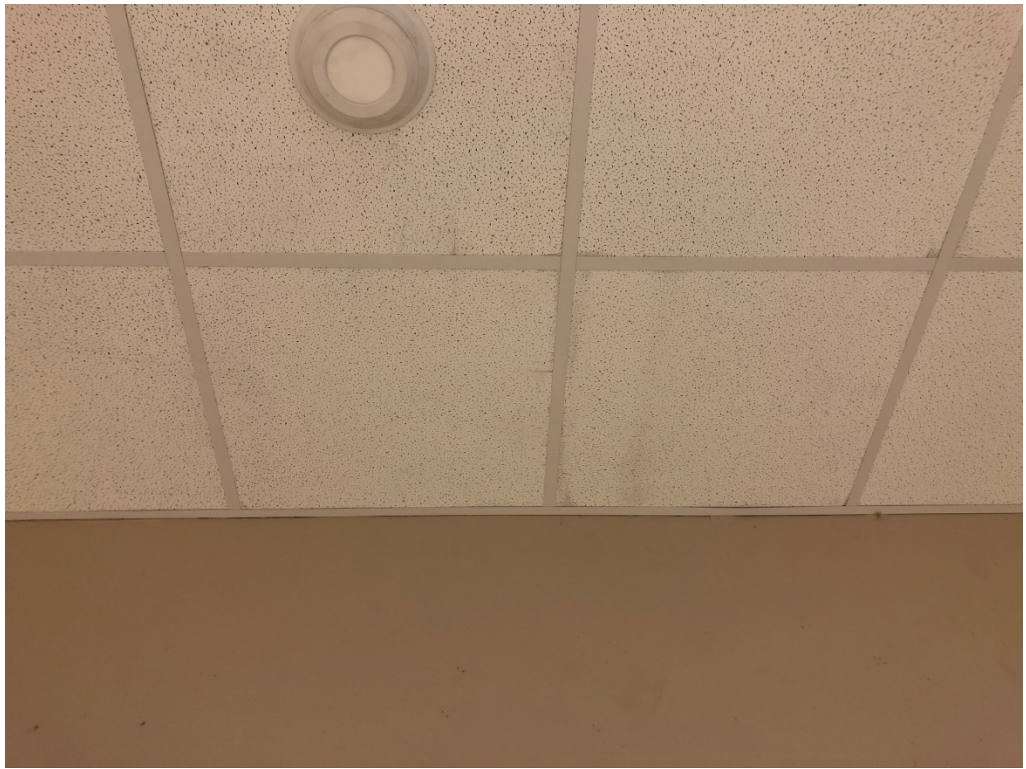


Figure 11 – Confirm Acceptability of discolored Ceiling Tile in Use SW Side Corridor Bldg 3



Figure 12 – Deformed Corner NW Side Corridor Building 3