

Architect's Field Report

T. Doug Dale, AIA

Jeffrey R. Barnes, AIA

Leigh G. Jaunsen, AIA, LEED AP

Russ S. Blount, AIA, LEED AP

Jason M. Agostinelli, AIA

In memory of  
Michael A. Barranco, AIA  
1962-2011

6 August 2021

15094 Community Bank Headquarters / Report Number 020

Contract Fountain Construction Company, Inc.

Date / Time 06 August 2021 / 10:45 AM

Weather / Temp Overcast / 80 ° F

Present at Site Glazing Installers, Sheetrock Hangers, Electricians, Painters  
Stan Green, Fountain Construction  
Paul Purser, Dale Partners Architects

Observations Arriving on site, I entered the west yard, which has been cleared and graded and looks to be in good condition. The glass contractor was parked out here and had a crew on a boom, installing glass panels at the 4<sup>th</sup> floor on the western façade. Around the east side of the building, glass is being stored from a recent delivery. It is a large order and appears to be in good condition.

Remediation work at the façade's panels is ongoing. Workers were on the south side of the building; the south façade appears to be most reworked but still requires cleaning. Around to the western face of the building, patching and other remediation work is still to be done.

Drywall hangers were at the interior working. Painters were in the north stair, applying a first coat to the handrail.

Curtain wall install is still to be performed throughout the structure, but it does appear that a large portion of the frames are built and on site.

Items to Verify None.

Action Required None.

Report By: Paul Purser, AIA, Architect  
Dale Partners Architects, P.A.

cc: Jim White, Community Bank  
Ryan Puckett, Community Bank  
Russ Blount, AIA, Dale Partners Architects  
Brad Fountain, Fountain Construction  
Robert Clay, Fountain Construction

DALE PARTNERS ARCHITECTS, P.A.

Architecture • Interiors • Planning

One Jackson Place, Suite 250  
188 East Capitol Street  
Jackson, MS 39201-2100

P 601.352.5411 • f 601.352.5362

161 Lameuse Street, Suite 201  
Biloxi, MS 39530

P 228.374.1409 • f 228.374.1414

dalepartners.com



Figure 1 – Glazing Install is Ongoing

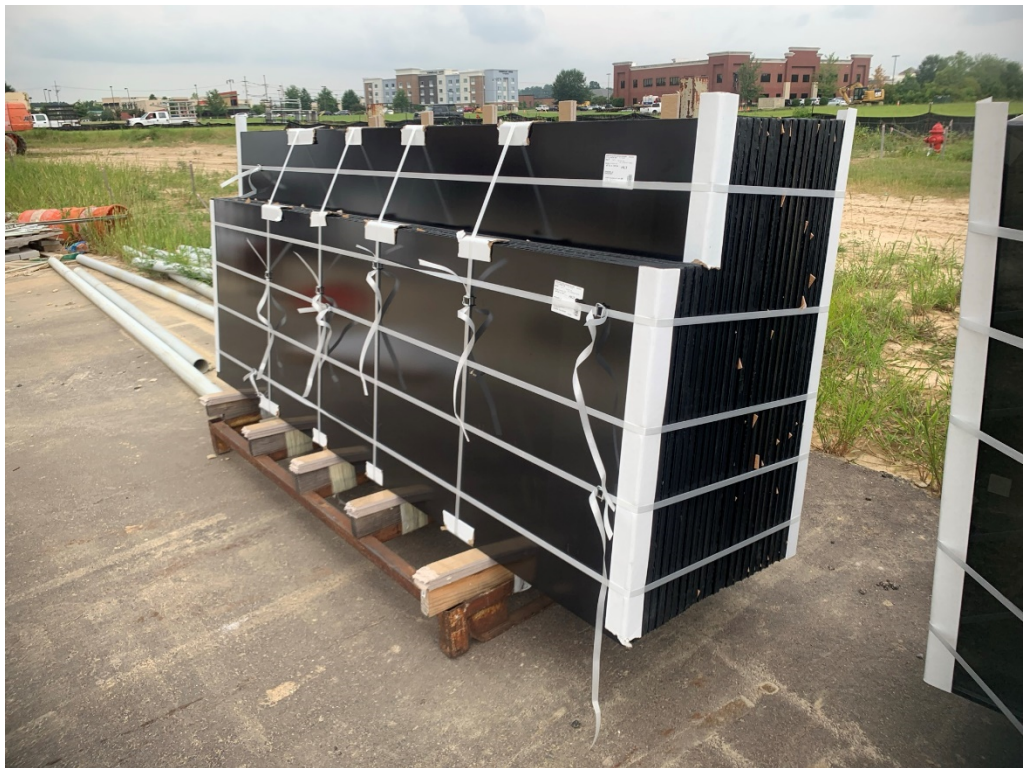


Figure 2 – Received Glazing



Figure 3 – Received Glazing



Figure 4 – Received Glazing



Figure 5 – Received Glazing



Figure 6 – Received Glazing



Figure 7 – North Façade Glazing Progress



Figure 8 – Reinstalled and Straightened Panels (appear in good condition)



Figure 9 – Discolored Panel Remediation is Ongoing



Figure 10 – West Front Yard Grading and Clean Up



Figure 11 – Remediation work is Ongoing



Figure 12 – Drive Thru Progress



Figure 13 – Structure @ Drive Thru



Figure 14 – Structural Repair at Drive Thru





Figure 15 – Spandrel Glass Panels installed at Column Glazing



Figure 16 – Spandrel Glass Panels from Outside



Figure 17 – Drywall hanging and finishing is ongoing



Figure 18 – North Stairwell Handrail getting first coat of paint



Figure 19 – Curtain Wall Progress at Office 4111



Figure 20 – Glass Installation @ Curtain Wall Top Floor