

Architect's Field Report

T. Doug Dale, AIA

Jeffrey R. Barnes, AIA

Leigh G. Jaunsen, AIA, LEED AP

Russ S. Blount, AIA, LEED AP

Jason M. Agostinelli, AIA

In memory of
Michael A. Barranco, AIA
1962-2011

6 July 2021

15094 Community Bank Headquarters / Report Number 015

Contract Fountain Construction Company, Inc.

Date / Time 28 June 2021 / 12:30 PM

Weather / Temp Partly cloudy / 86 ° F

Present at Site Drywall Finishers, Framers, Cleaners
Paul Purser, Dale Partners Architects

Observations At the north Façade, some progress has been made at glazing. Glass is about 60% installed.

At the interior, most work was taking place at the 4th floor. Framing and drywall installation as well as cleanup was ongoing here.

Humidity today was at 63% and the temperature at 86 degrees; moisture in the air at this level is about 0.016 lbs which is high. After the building is dried in and HVAC is running, an extended drying period should be considered prior to installing finishes.

Progress on the North façade is slow; it appears to me that a lack of personnel is the main issue as when I've seen people on site, things do get accomplished, however, I am not seeing many on site. I know you're doing your best to push subs, and please continue to do so.

Items to Verify None.

Action Required None.

Report By: Paul Purser, AIA, Architect
Dale Partners Architects, P.A.

DALE PARTNERS ARCHITECTS, P.A.

Architecture • Interiors • Planning

One Jackson Place, Suite 250
188 East Capitol Street
Jackson, MS 39201-2100

P 601.352.5411 • f 601.352.5362

161 Lameuse Street, Suite 201
Biloxi, MS 39530

P 228.374.1409 • f 228.374.1414

dalepartners.com

cc:

Jim White, Community Bank
Ryan Puckett, Community Bank
Russ Blount, AIA, Dale Partners Architects
Brad Fountain, Fountain Construction
Robert Clay, Fountain Construction



Figure 1 – Front Façade Progress



Figure 2 – Glazing Progress at North Facade



Figure 3 – Glazing Progress at North Facade



Figure 4 – NE Patch looks much better



Figure 5 – Masonry is Ongoing



Figure 6 – Corner Framing needs to be locked in with neighboring member at NE corner at 2nd Floor



Figure 7 – Electrical at 3rd Floor 3010



Figure 8 – Drywall finishing at 3rd Floor



Figure 9 – Drywall finishing at 3rd Floor



Figure 10 – Drywall finishing at 3rd Floor



Figure 11 – Drywall finishing is also in progress at 4th floor



Figure 12 – Progress at Front Façade on the 1st



Figure 13 – Framing at Boardroom is Ongoing



Figure 14 – 4th Floor Northeast section drywall is ongoing



Figure 15 – Drywall Install is Ongoing at 4th Floor



Figure 16 – 4th Floor Bathroom Bank continued Framing



Figure 17 – South Section of Fourth Floor drywall install still ongoing

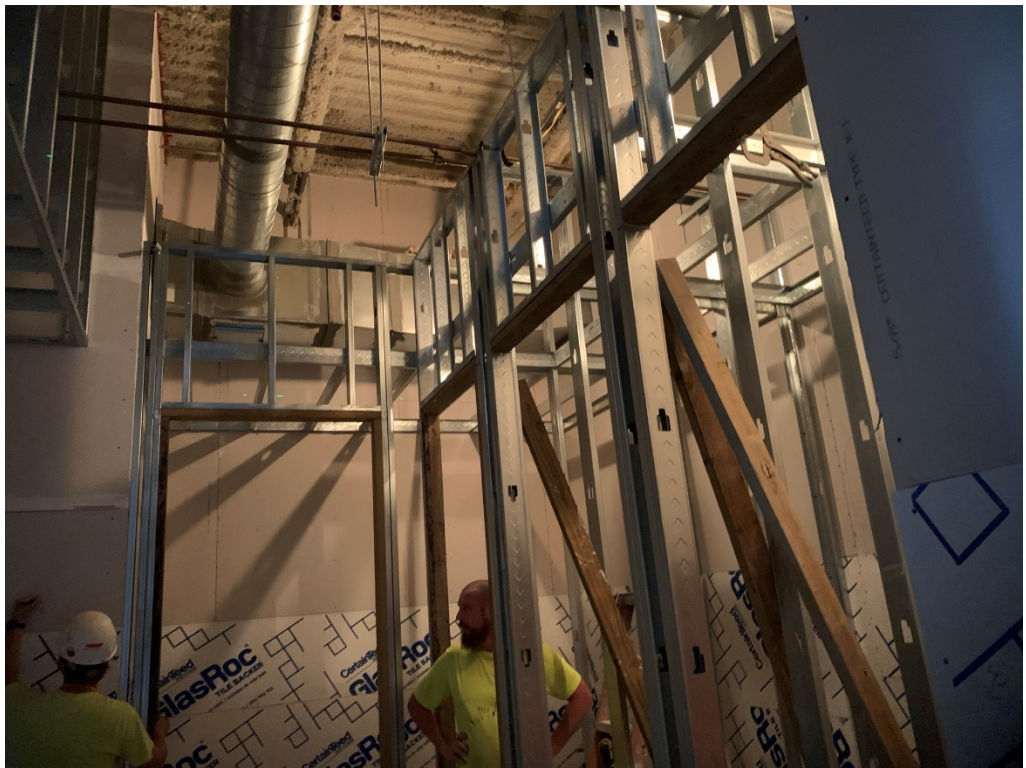


Figure 18 – 4th Floor Bathroom Bank continued Framing