

Architect's Field Report

T. Doug Dale, AIA

Jeffrey R. Barnes, AIA

Leigh G. Jaunsen, AIA, LEED AP

Russ S. Blount, AIA, LEED AP

Jason M. Agostinelli, AIA

In memory of  
Michael A. Barranco, AIA  
1962-2011

22 June 2021

15094 Community Bank Headquarters

Contract Fountain Construction Company, Inc.

Date / Time 21 June 2021 / 1:00 PM

Weather / Temp Sunny / 91 ° F

Present at Site Robert Clay, Fountain Construction  
Masons, Mechanical Installers, Drywall Finishers, Electricians, Framers  
Paul Purser, Dale Partners Architects

Observations Arriving on site, I walked the elevation noting work being performed at south and south east elevations. Welding per engineer's recent direction was nearing completion at the drive thru perimeter beam. Masons were also at work at brick panels.

At the first floor, framers were working on furr downs. Welders were on the fourth floor adding to a carriage beam as required per recent design change at banquet hall.

Items to Verify None.

Action Required None.

Report By: Paul Purser, AIA, Architect  
Dale Partners Architects, P.A.

cc: Jim White, Community Bank  
Ryan Puckett, Community Bank  
Russ Blount, AIA, Dale Partners Architects  
Brad Fountain, Fountain Construction  
Robert Clay, Fountain Construction

DALE PARTNERS ARCHITECTS, P.A.

Architecture • Interiors • Planning

One Jackson Place, Suite 250  
188 East Capitol Street  
Jackson, MS 39201-2100

P 601.352.5411 • f 601.352.5362

161 Lameuse Street, Suite 201  
Biloxi, MS 39530

P 228.374.1409 • f 228.374.1414

dalepartners.com



Figure 1 – West Elevation Progress



Figure 2 – Ongoing Work at North Façade



Figure 3 – Mechanical Installer De-Mobilizing

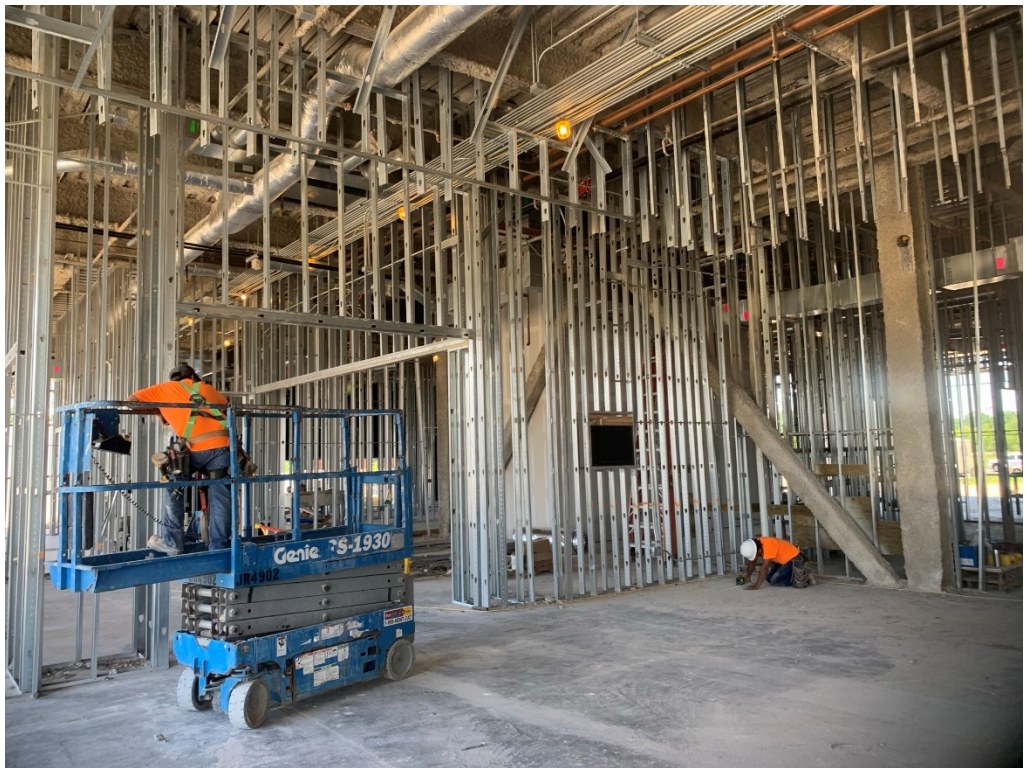


Figure 4 – First Floor Framing is Ongoing



Figure 5 – Excavation Area Cleaned Up



Figure 6 – Pay Special Attention to Corners for flatness and mud build up throughout



Figure 7 – Pay Special Attention to Corners for flatness and mud build up throughout



Figure 8 – Extended Steel Required for Redraw at Banquet