

## Architect's Field Report

T. Doug Dale, AIA

Jeffrey R. Barnes, AIA

Leigh G. Jaunsen, AIA, LEED AP

Russ S. Blount, AIA, LEED AP

Jason M. Agostinelli, AIA

In memory of  
Michael A. Barranco, AIA  
1962-2011

19 May 2021

15094 Community Bank Headquarters

Contract Fountain Construction Company, Inc.

Date / Time 12 May 2021 / 10:30 AM

Weather / Temp Cloudy / 74 ° F

Present at Site Robert Clay, FCC  
OAC Attendees  
Masons, Mechanical Installers, Drywall Finishers  
Paul Purser, Dale Partners Architects

Observations After our bi-weekly OAC meeting, I walked the exterior with Robert Clay, FCC. We reviewed progress at the exterior and specifically looked at east facing panels that were still slated for rework. We discussed schedule and the rework of these panels is on it but after a couple other items, namely, erecting the drive-thru panels and a repair at the west face; he mentioned that we were still several weeks out from the rework.

At the north elevation, a mason was reworking brick tile. This face is nearest completion, but still lacks mortar in several locations.

At the interior duct installers were busy throughout at both the first and 4<sup>th</sup> floors. Drywall finishes were also mudding in tape. There are several areas where water is pooled and soaking into the lower 6" of installed drywall. Over time, repetition of this will cause the paper to delaminate from the rock. The rock is up ½" from the floor, so the standing water must be deeper than ½". Contractor should take steps to remedy by removing water daily until façade is dried in. Also, be sure to check humidity levels after dried in and before install finishes.

Items to Verify None.

Action Required None.

Report By:

Paul Purser, AIA, Architect  
Dale Partners Architects, P.A.

cc: Jim White, Community Bank  
Ryan Puckett, Community Bank  
Russ Blount, AIA, Dale Partners Architects  
Brad Fountain, Fountain Construction  
Robert Clay, Fountain Construction

DALE PARTNERS ARCHITECTS, P.A.

Architecture • Interiors • Planning

One Jackson Place, Suite 250  
188 East Capitol Street  
Jackson, MS 39201-2100

P 601.352.5411 • f 601.352.5362

161 Lameuse Street, Suite 201  
Biloxi, MS 39530

P 228.374.1409 • f 228.374.1414

dalepartners.com



Figure 1 – North Elevation Progress at Panel Rework



Figure 2 – NE Corner, reworked



Figure 3 – West Façade; white column at right of image slated for future rework



Figure 4 – Ongoing Duct Installation at 1<sup>st</sup> Floor



Figure 5 – Standing Water at First Floor

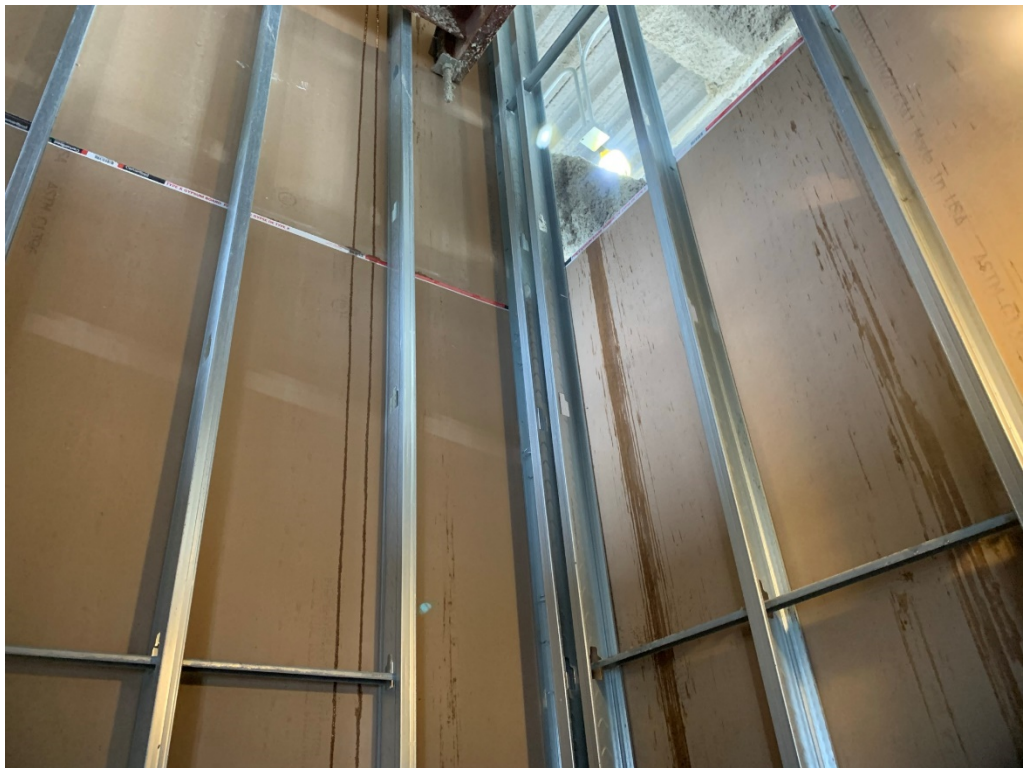


Figure 6 – Water at North Stairwell dripping down drywall interior face



Figure 7 – 2<sup>nd</sup> Floor Staging



Figure 8 – Standing Water in 3<sup>rd</sup> Floor Room



Figure 9 – Damaged Fire Insulation



Figure 10 – Standing Water in 3<sup>rd</sup> Floor Room