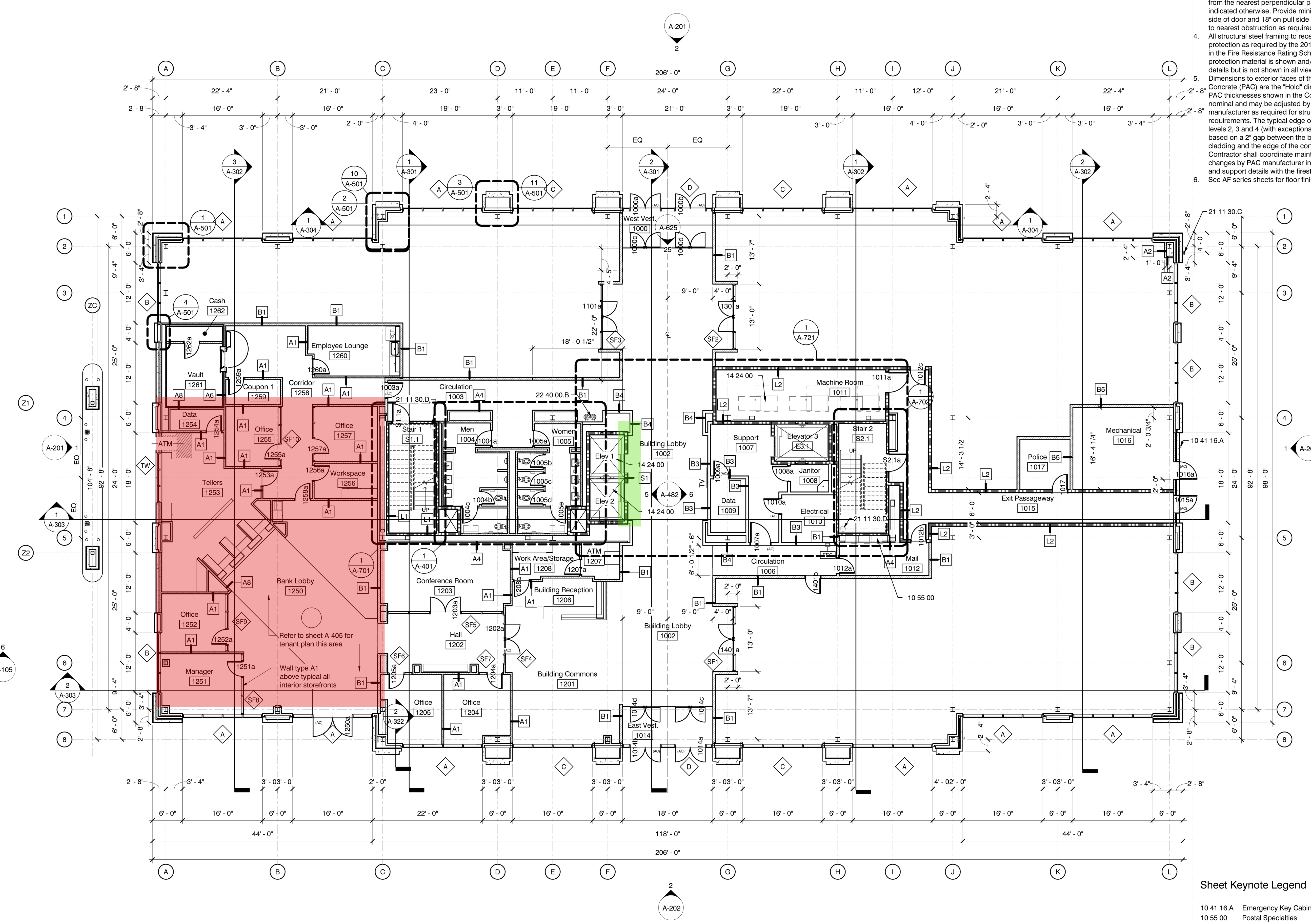


General Plan Notes

- Interior partitions not otherwise designated, tagged or detailed are to be Partition Type B1.
- All furniture shown in plan is NIC
- All door frames in metal stud partitions to be located 4" from the nearest perpendicular partition (typical) unless indicated otherwise. Provide minimum clear of 12" on push side of door and 18" on pull side of door from edge of door to nearest obstruction as required by 2010 ADAAG.
- All structural steel framing to receive fire resistance protection as required by the 2015 IBC and as designated in the Fire Resistance Rating Schedule. The fire resistance protection material is shown and/or noted in most enlarged details but is not shown in all views for clarity.
- Dimensions to exterior faces of the Precast Architectural Concrete (PAC) are the "Hold" dimension for design intent. PAC thicknesses shown in the Construction Documents are nominal and may be adjusted by the Precast Concrete manufacturer as required for structural engineering requirements. The typical edge of slab location at floor levels 2, 3 and 4 (with exceptions at special conditions) is based on a 2" gap between the back of the precast cladding and the edge of the concrete slab. General Contractor shall coordinate maintaining gap width for changes by PAC manufacturer in the PAC cladding depth and support details with the firestopping requirements.
- See AF series sheets for floor finish patterns.



Sheet Keynote Legend

10 41 16.A	Emergency Key Cabinet
10 55 00	Postal Specialties
14 24 00	Hydraulic Elevators
21 11 30.C	Fire Department Connection
21 11 30.D	Fire Protection Standpipe
22 40 00.B	Electric Drinking Fountain, Ref. Plumbing

REMOVE 24" IN RED HIGHLIGHTED AREA

REMOVE ALL TO DECK ABOVE IN GREEN HIGHLIGHTED AREA

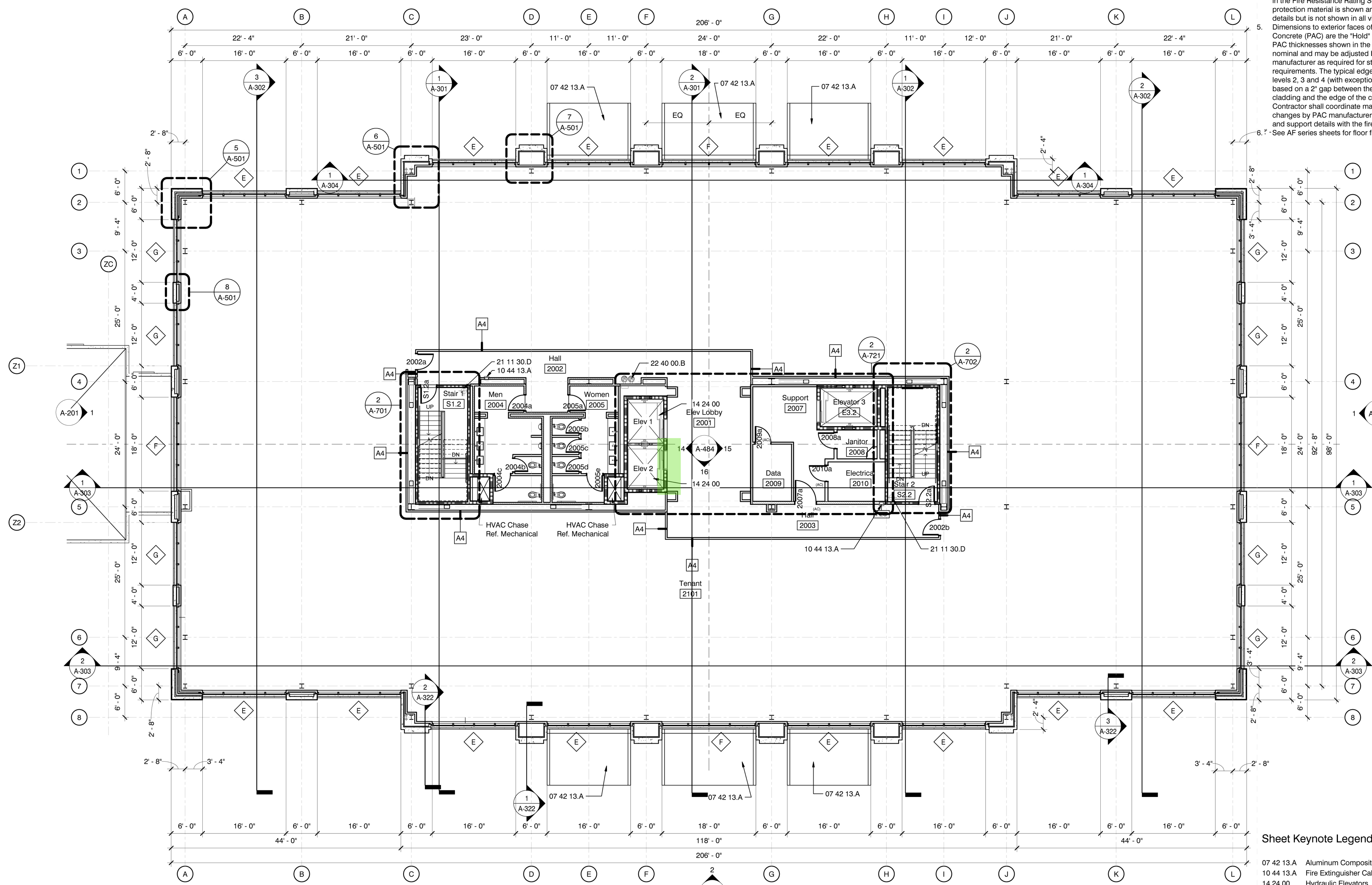
TO BE REMOVED: DRYWALL, INSULATION, & FASTENERS

6/10/2019 4:09:58 PM C:\Users\bobbystrobell\Documents\15094_CBHQ_BobbyStrobell\2756.rvt



General Plan Notes

- Interior partitions not otherwise designated, tagged or detailed are to be Partition Type B1.
- All furniture shown in plan is NIC
- All door frames in metal stud partitions to be located 4" from the nearest perpendicular partition (typical) unless indicated otherwise. Provide minimum clear of 12" on push side of door and 18" on pull side of door from edge of door to nearest obstruction as required by 2010 ADAAG.
- All structural steel framing to receive fire resistance protection as required by the 2015 IBC and as designated in the Fire Resistance Rating Schedule. The fire resistance protection material is shown and/or noted in most enlarged details but is not shown in all views for clarity.
- Dimensions to exterior faces of the Precast Architectural Concrete (PAC) are the "Hold" dimension for design intent. PAC thicknesses shown in the Construction Documents are nominal and may be adjusted by the Precast Concrete manufacturer as required for structural engineering requirements. The typical edge of slab location at floor levels 2, 3 and 4 (with exceptions at special conditions) is based on a 2" gap between the back of the precast cladding and the edge of the concrete slab. General Contractor shall coordinate maintaining gap width for changes by PAC manufacturer in the PAC cladding depth and support details with the firestopping requirements.
- See AF series sheets for floor finish patterns.



1 L2 Level 2 Floor Plan
1/8" = 1'-0"

REMOVE 24" IN RED HIGHLIGHTED AREA
REMOVE ALL TO DECK ABOVE IN GREEN HIGHLIGHTED AREA

TO BE REMOVED: DRYWALL, INSULATION, & FASTENERS

Sheet Keynote Legend

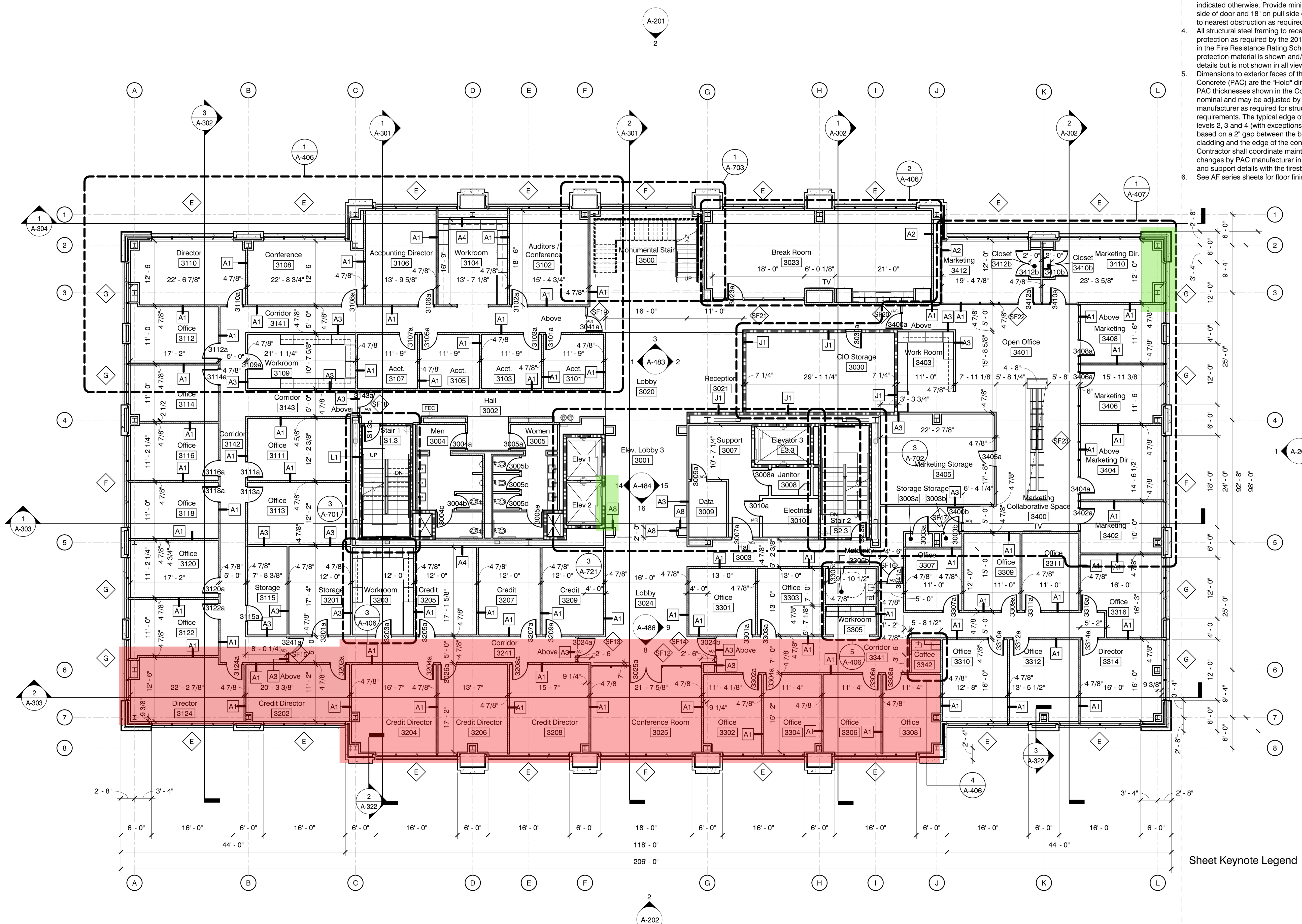
- 07 42 13.A Aluminum Composite Material Cladding System
- 10 44 13.A Fire Extinguisher Cabinet (FEC1)
- 14 24 00 Hydraulic Elevators
- 21 11 30.D Fire Protection Standpipe
- 22 40 00.B Electric Drinking Fountain, Ref. Plumbing

6/10/2019 4:10:05 PM C:\Users\bobbystrobel\Documents\15094_CBHQ_BobbyStrobel\2756.rvt

Construction Documents
Project No 15094
Date 31 May 2019
Drawn EDA
Checked RBI
Revisions Rev Date

General Plan Notes

- Interior partitions not otherwise designated, tagged or detailed are to be Partition Type B1.
- All furniture shown in plan is NIC
- All door frames in metal stud partitions to be located 4" from the nearest perpendicular partition (typical) unless indicated otherwise. Provide minimum clear of 12" on push side of door and 18" on pull side of door from edge of door to nearest obstruction as required by 2010 ADAAG.
- All structural steel framing to receive fire resistance protection as required by the 2015 IBC and as designated in the Fire Resistance Rating Schedule. The fire resistance protection material is shown and/or noted in most enlarged details but is not shown in all views for clarity.
- Dimensions to exterior faces of the Precast Architectural Concrete (PAC) are the "Hold" dimension for design intent. PAC thicknesses shown in the Construction Documents are nominal and may be adjusted by the Precast Concrete manufacturer as required for structural engineering requirements. The typical edge of slab location at floor levels 2, 3 and 4 (with exceptions at special conditions) is based on a 2" gap between the back of the precast cladding and the edge of the concrete slab. General Contractor shall coordinate maintaining gap width for changes by PAC manufacturer in the PAC cladding depth and support details with the firestopping requirements.
- See AF series sheets for floor finish patterns.



1 L3 Level 3 Floor Plan
1/8" = 1'-0"

REMOVE 24" IN RED HIGHLIGHTED AREA
REMOVE ALL TO DECK ABOVE IN GREEN HIGHLIGHTED AREA

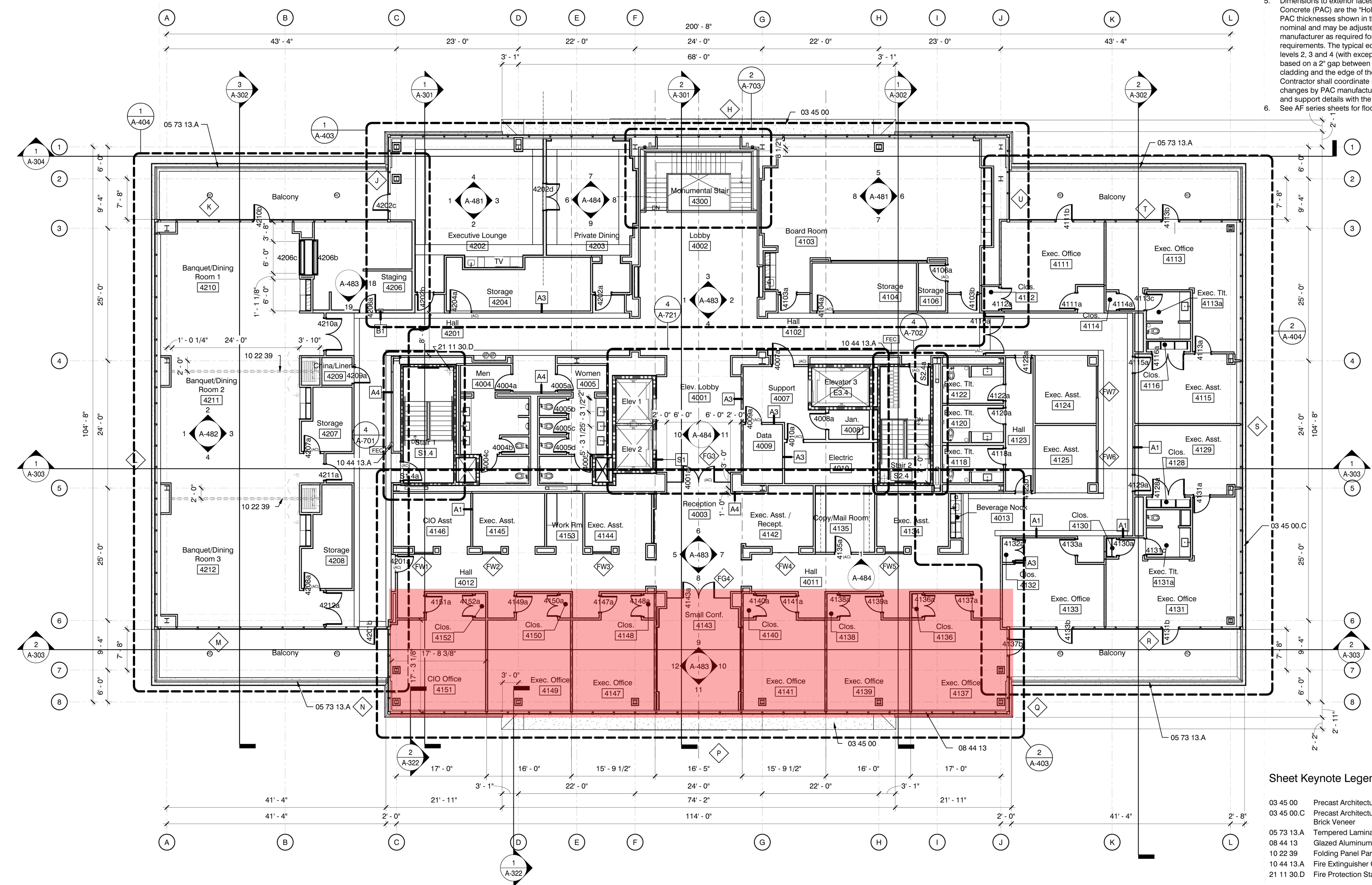
TO BE REMOVED: DRYWALL, INSULATION, & FASTENERS

Sheet Keynote Legend

6/10/2019 4:10:15 PM C:\Users\bobbystrobell\Documents\15094 CBHQ_BobbyStrobell\2756.rvt



- General Plan Notes**
- Interior partitions not otherwise designated, tagged or detailed are to be Partition Type B1.
 - All furniture shown in plan is NIC
 - All door frames in metal stud partitions to be located 4" from the nearest perpendicular partition (typical) unless indicated otherwise. Provide minimum clear of 12" on push side of door and 18" on pull side of door from edge of door to nearest obstruction as required by 2010 ADAAG.
 - All structural steel framing to receive fire resistance protection as required by the 2015 IBC and as designated in the Fire Resistance Rating Schedule. The fire resistance protection material is shown and/or noted in most enlarged details but is not shown in all views for clarity.
 - Dimensions to exterior faces of the Precast Architectural Concrete (PAC) are the "Hold" dimension for design intent. PAC thicknesses shown in the Construction Documents are nominal and may be adjusted by the Precast Concrete manufacturer as required for structural engineering requirements. The typical edge of slab location at floor levels 2, 3 and 4 (with exceptions at special conditions) is based on a 2" gap between the back of the precast cladding and the edge of the concrete slab. General Contractor shall coordinate maintaining gap width for changes by PAC manufacturer in the PAC cladding depth and support details with the firestopping requirements.
 - See AF series sheets for floor finish patterns.



1 L4 Level 4 Floor Plan
1/8" = 1'-0"

REMOVE 24" IN RED HIGHLIGHTED AREA

TO BE REMOVED: DRYWALL, INSULATION, & FASTENERS

Sheet Keynote Legend

03 45 00	Precast Architectural Concrete
03 45 00.C	Precast Architectural Concrete (PAC) with Thin Brick Veneer
05 73 13.A	Tempered Laminated Glass Railing
08 44 13	Glazed Aluminum Curtain Walls
10 22 39	Folding Panel Partitions
10 44 13.A	Fire Extinguisher Cabinet (FEC1)
21 11 30.D	Fire Protection Standpipe

Construction Documents

Project No	15094
Date	31 May 2019
Drawn	EDA
Checked	RBI
Revisions	Rev Date