

# DALE | BAILEY

J a c k s o n • B i l o x i

AN ASSOCIATION

M i s s i s s i p p i



## Leland Elementary Exterior Repairs

404 E. Third Street  
Leland, MS 38756

DPA PN: 22065

Design Development  
Aug. 29, 2022

**Superintendent** Rev. Jessie King

### Board of Education

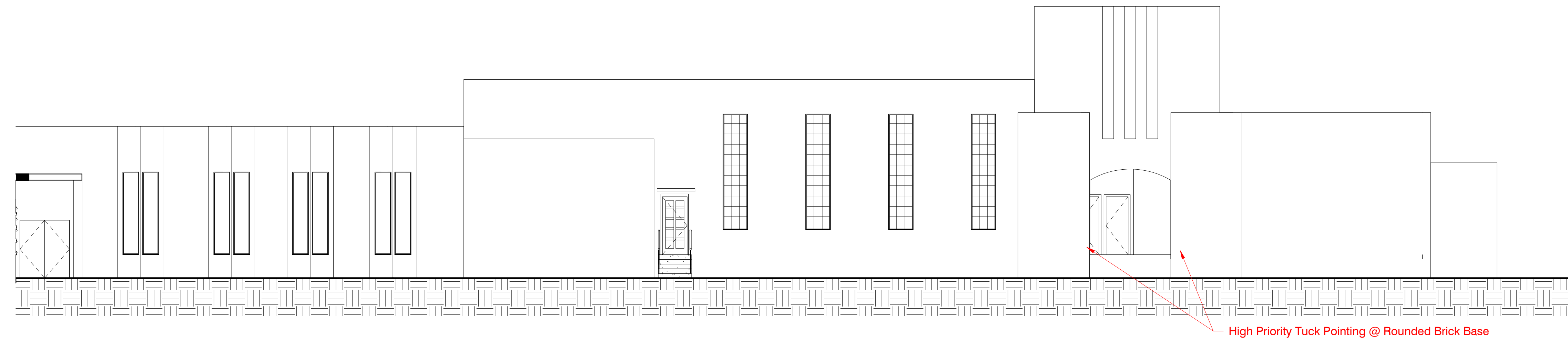
President	Brandon Keith Taylor
Vice President	Evelyn Gordon Murray
Secretary	Joe Ann Williams
Board Attorney	Ashley Harris
Board Member	Nashobeya Wright
Board Member	Dr. Don Keim

### Team

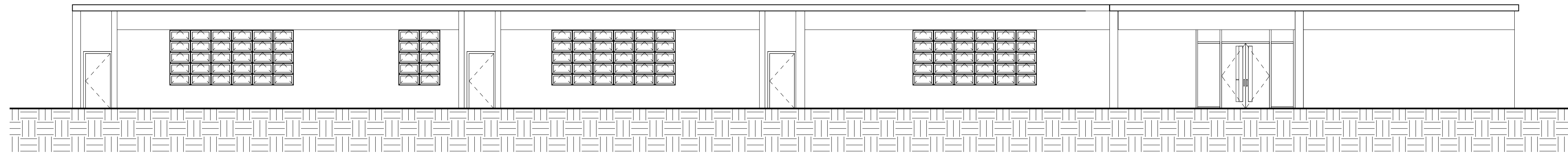
Owner	Leland School District
Architect	Dale Bailey, an Association

**Scope of Work**

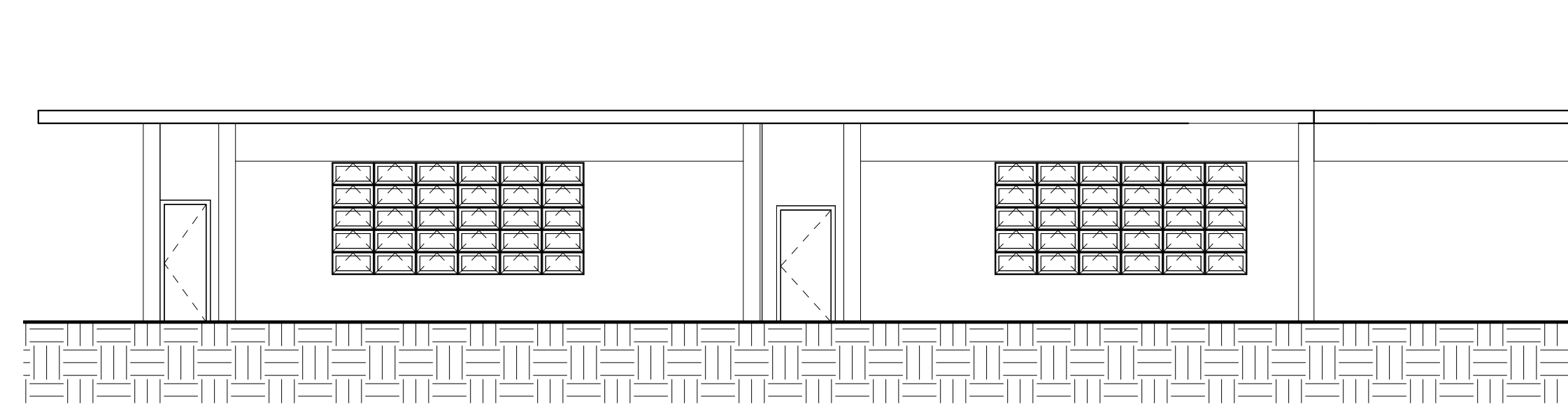
1. Pressure wash all brick at exterior elevations.
2. Remove all vegetation from building facade.
3. Provide linear foot unit price for tuck pointing.
4. Provide linear foot unit price for caulking/glazing of windows.
5. Provide square foot price for replace single pane glass panels.
6. Provide square foot price for replacing damage window screens.
7. Provide square foot price for install masonry sealer.
8. Repair Soffit where missing.
9. Paint all Soffit & Ceilings (exclude Awnings).
10. Paint any exposed wood attached to building (exclude Awnings).
11. Paint all metal (excluding window assemblies, downspouts, & gutters AND including roof boots, door frames, door panels, and storefront framing as well as miscellaneous structural elements).



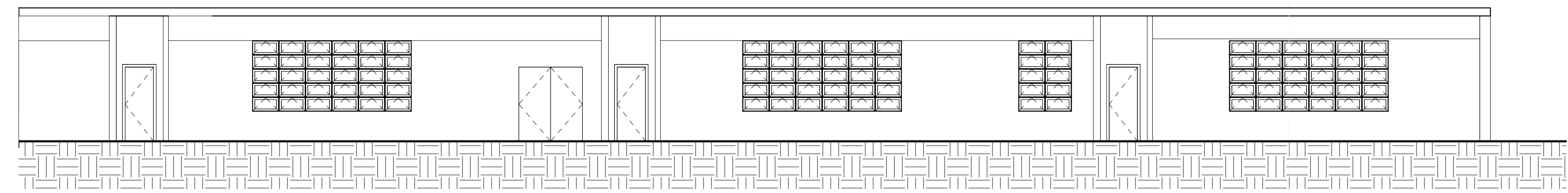
**1 North Facade - West Section**  
1/8" = 1'-0"



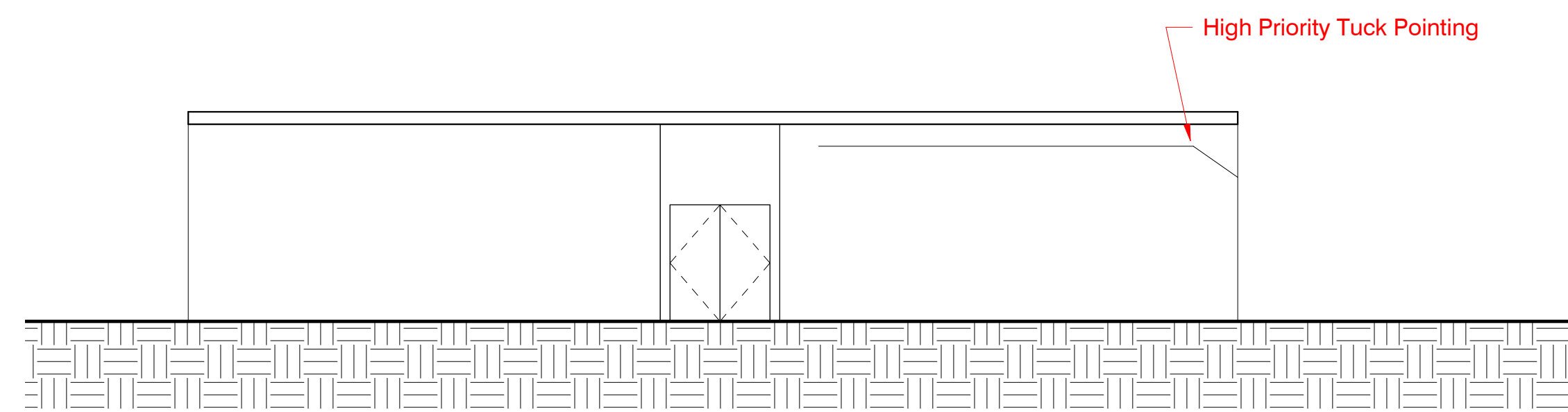
**3 North Facade - East Section**  
1/8" = 1'-0"



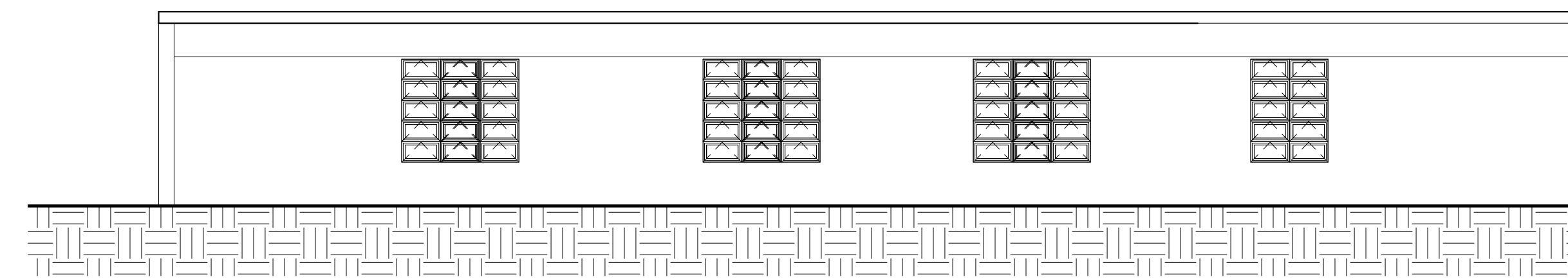
**2 North Facade - Looking East**  
1/8" = 1'-0"



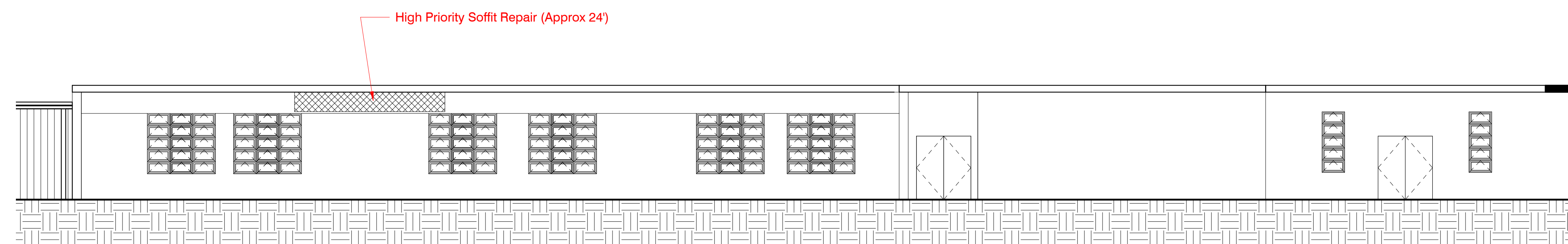
**5 East Facade - Nook Looking North**  
1/8" = 1'-0"



**4 East Facade - North Section**  
1/8" = 1'-0"



**6 East Facade - Nook Looking South**  
1/8" = 1'-0"

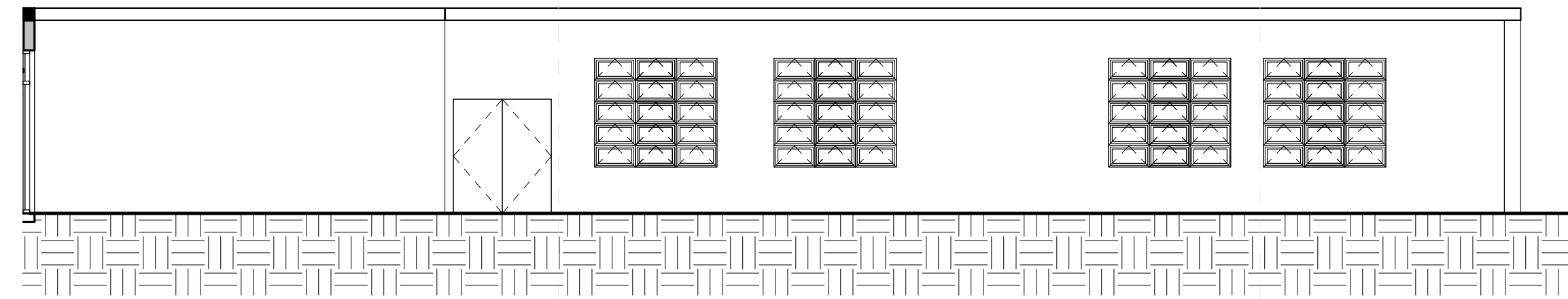


**7 East Facade - South Section**  
1/8" = 1'-0"

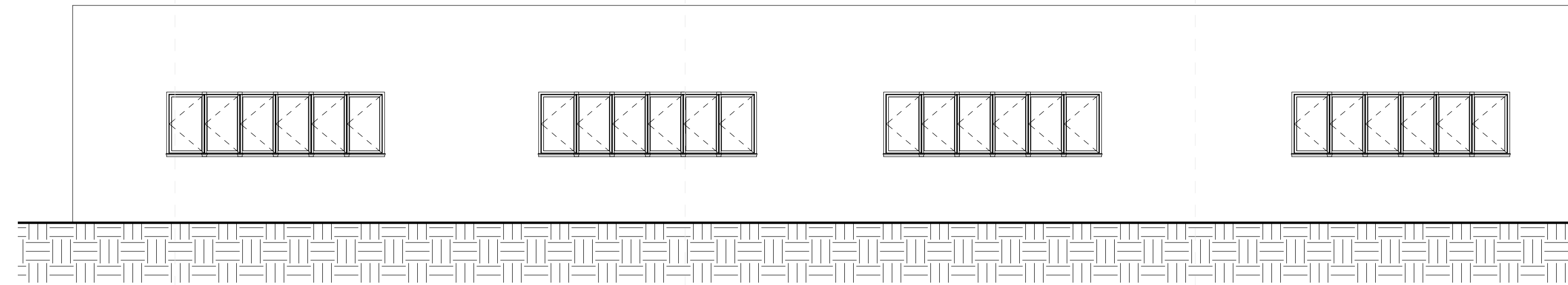


**Scope of Work**

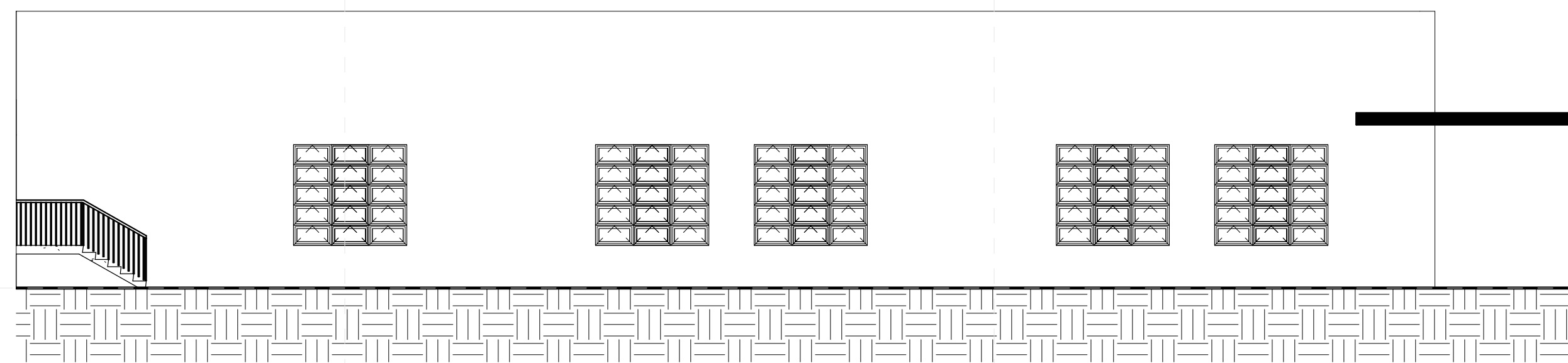
1. Pressure wash all brick at exterior elevations.
2. Remove all vegetation from building facade.
3. Provide linear foot unit price for tuck pointing.
4. Provide linear foot unit price for caulking/glazing of windows.
5. Provide square foot price for replace single pane glass panels.
6. Provide square foot price for replacing damage window screens.
7. Provide square foot price for install masonry sealer.
8. Repair Soffit where missing.
9. Paint all Soffit & Ceilings (exclude Awnings).
10. Paint any exposed wood attached to building (exclude Awnings).
11. Paint all metal (excluding window assemblies, downspouts, & gutters AND including roof boots, door frames, door panels, and storefront framing as well as miscellaneous structural elements).



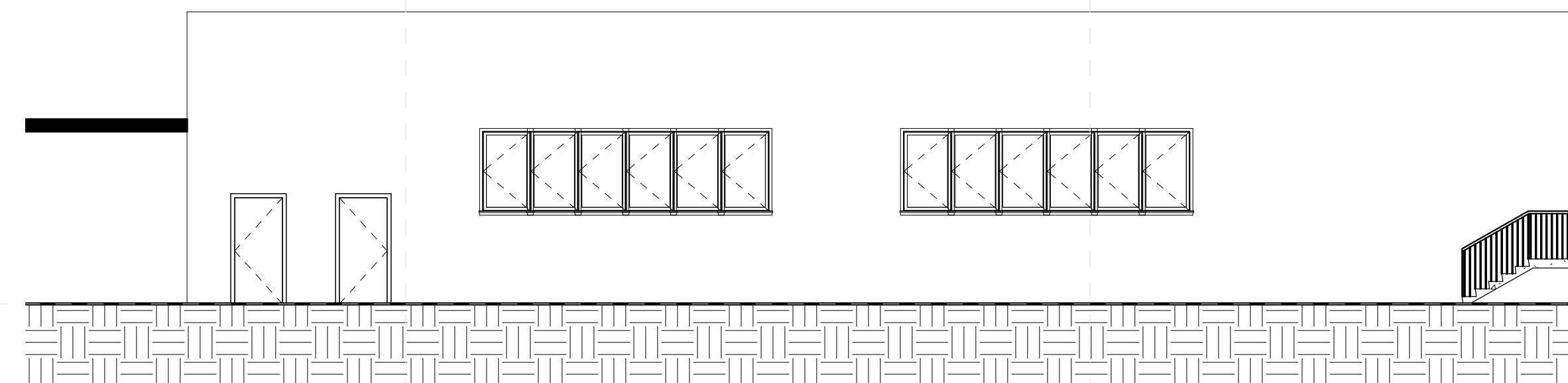
1 South Facade - E Nook Looking East  
1/8" = 1'-0"



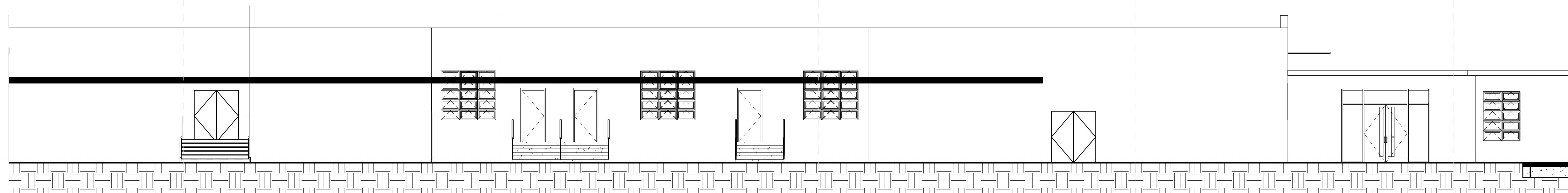
2 South Facade - E Nook Looking West  
1/8" = 1'-0"



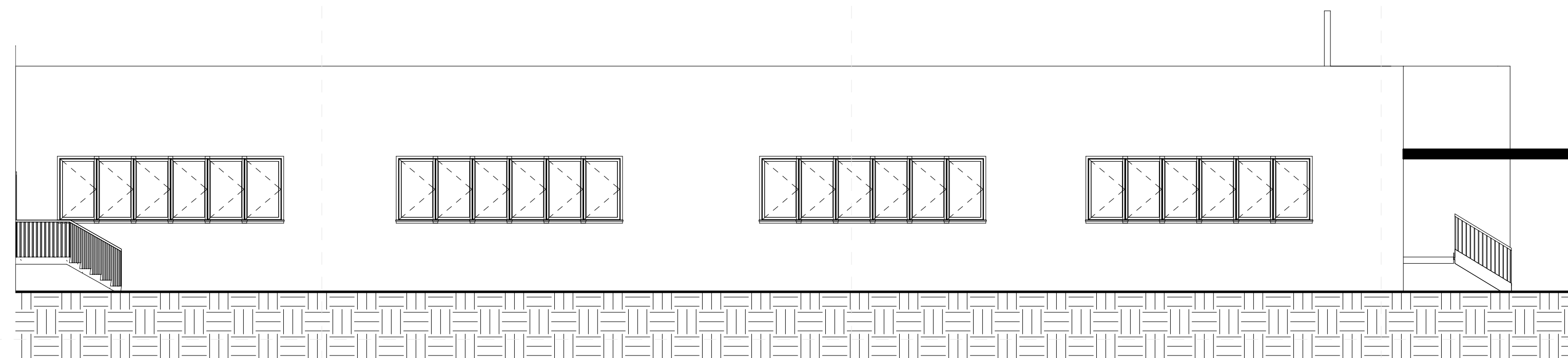
3 South Facade - W Nook Looking East  
1/8" = 1'-0"



4 South Facade - W Nook Looking West  
1/8" = 1'-0"

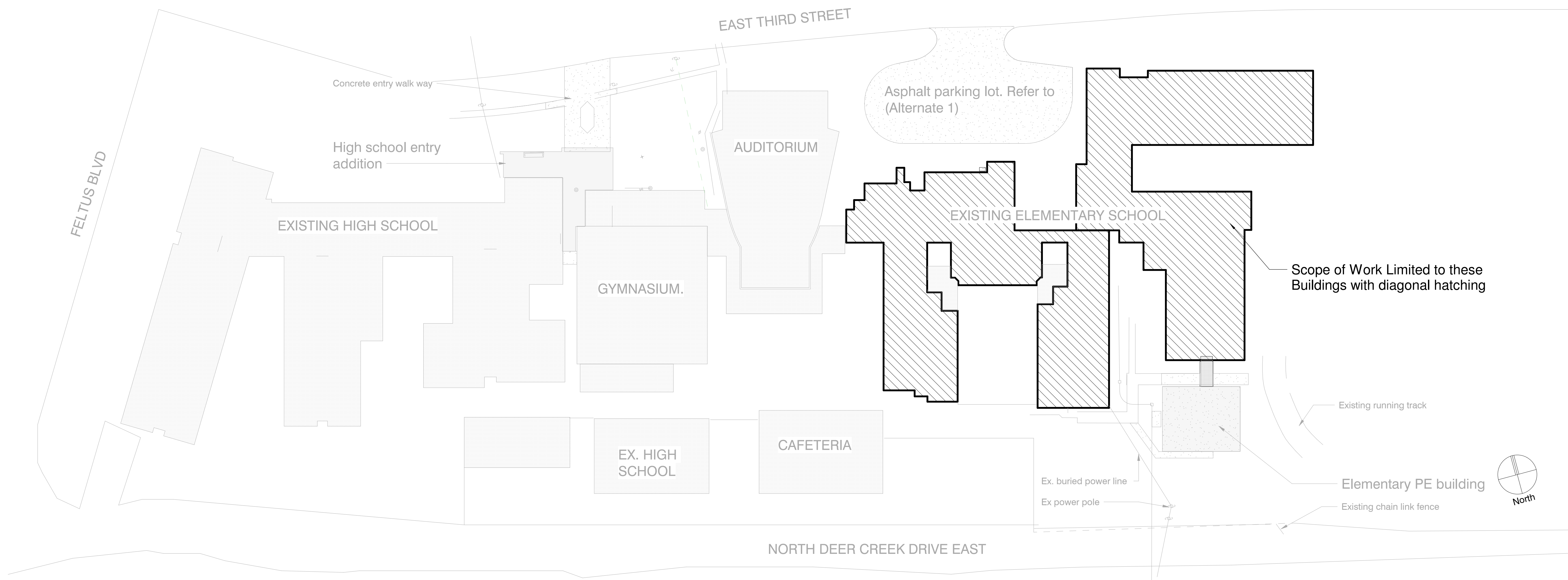
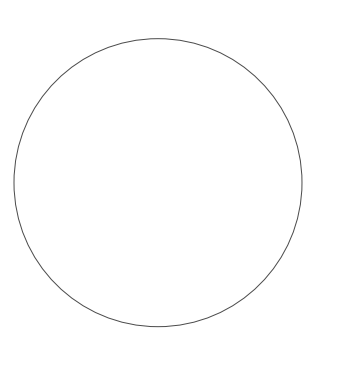


5 South Facade  
1/8" = 1'-0"

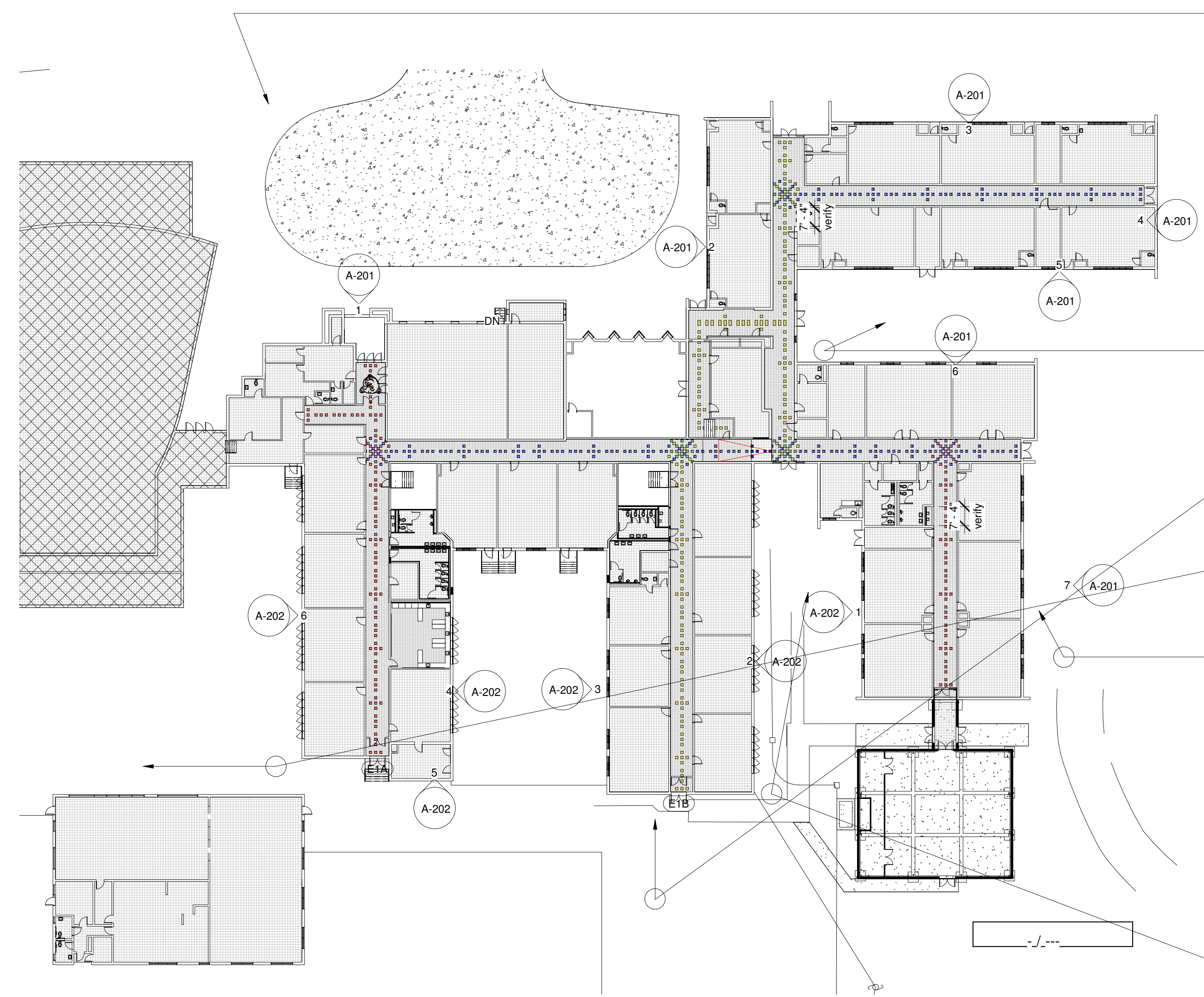


6 West Facade  
1/8" = 1'-0"



**1 Site Plan High School & Elementary**  
1" = 40'-0"



**2 Elementary School Floor Plan**  
1/32" = 1'-0"



Just 1 Area needs new plywood?

Pressure Wash Brick?

Tuck Point @ Sills

**Scope of Work**

1. Pressure wash all brick at exterior elevations.
2. Remove all vegetation from building facade.
3. Provide linear foot unit price for tuck pointing.
4. Provide linear foot unit price for caulking/glazing of windows.
5. Provide square foot price for replace single pane glass panels.
6. Provide square foot price for replacing damage window screens.
7. Provide square foot price for install masonry sealer.
8. Repair Soffit where missing.
9. Paint all Soffit & Ceilings (exclude Awnings).
10. Paint any exposed wood attached to building (exclude Awnings).
11. Paint all metal (excluding window assemblies, downspouts, & gutters AND including roof boots, door frames, door panels, and storefront framing as well as miscellaneous structural elements).