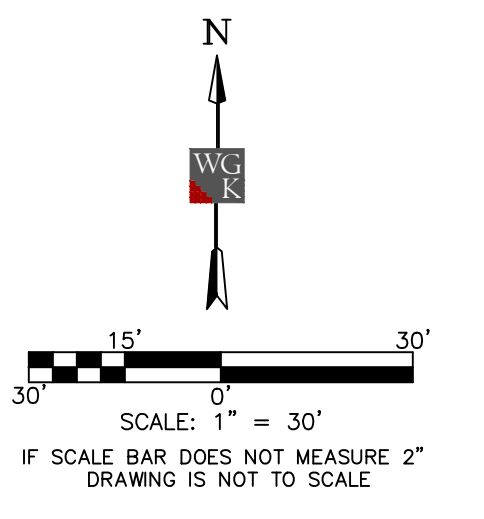




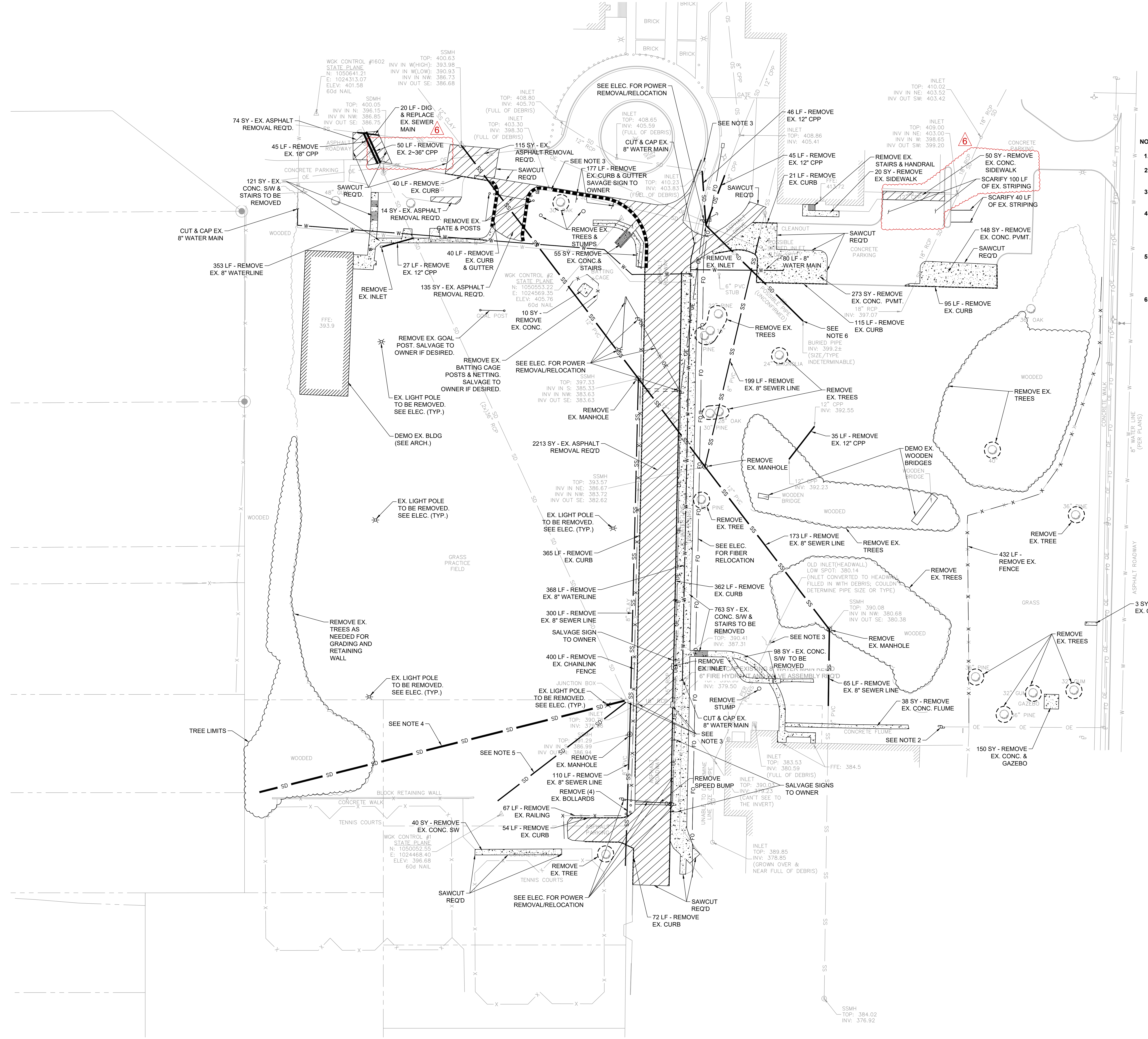
**Meridian High School Baseball/Softball**  
2320 32nd St., Meridian, MS 39305

100%  
Construction  
Documents

Project No	22034-03
Date	March 6, 2023
Revisions	Rev Date
Rev. 4	April 19, 2023
REV. 5	APRIL 28, 2023
REV. 6	MAY 5, 2023



- NOTES:**
- Sawcut required at all asphalt and concrete removal.
  - CONTRACTOR to coordinate with utility to support/relocate existing pole as needed to accommodate proposed grading.
  - Modifications to be made to these drainage structures. See Civil Drainage Plan.
  - CONTRACTOR to uncover and locate existing 18" RCP, associated branch lines, and upstream end. Approximate location shown on plans. Contractor should anticipate removing 320 LF of 18" RCP but is required to locate/uncover pipe to receive final direction from ENGINEER.
  - CONTRACTOR to uncover and locate existing 10" VCP/HDPE pipe, associated branch lines, and upstream end. Approximate location shown on plans. CONTRACTOR to anticipate removing 135 LF of 10" storm drain but is required to uncover & locate pipe to receive final direction from ENGINEER.
  - Remove approximately 70 LF of 18" HDPE pipe from existing detention pond until concrete junction box, remove existing junction box, and an additional 44 LF of 18" RCP.



V:\Date Partners\2023-349-00 Meridian High School Baseball\_Softball\_1\Production Drawings\Working\C-200 Demo Plans.dwg 5/25/2023 11:53 AM