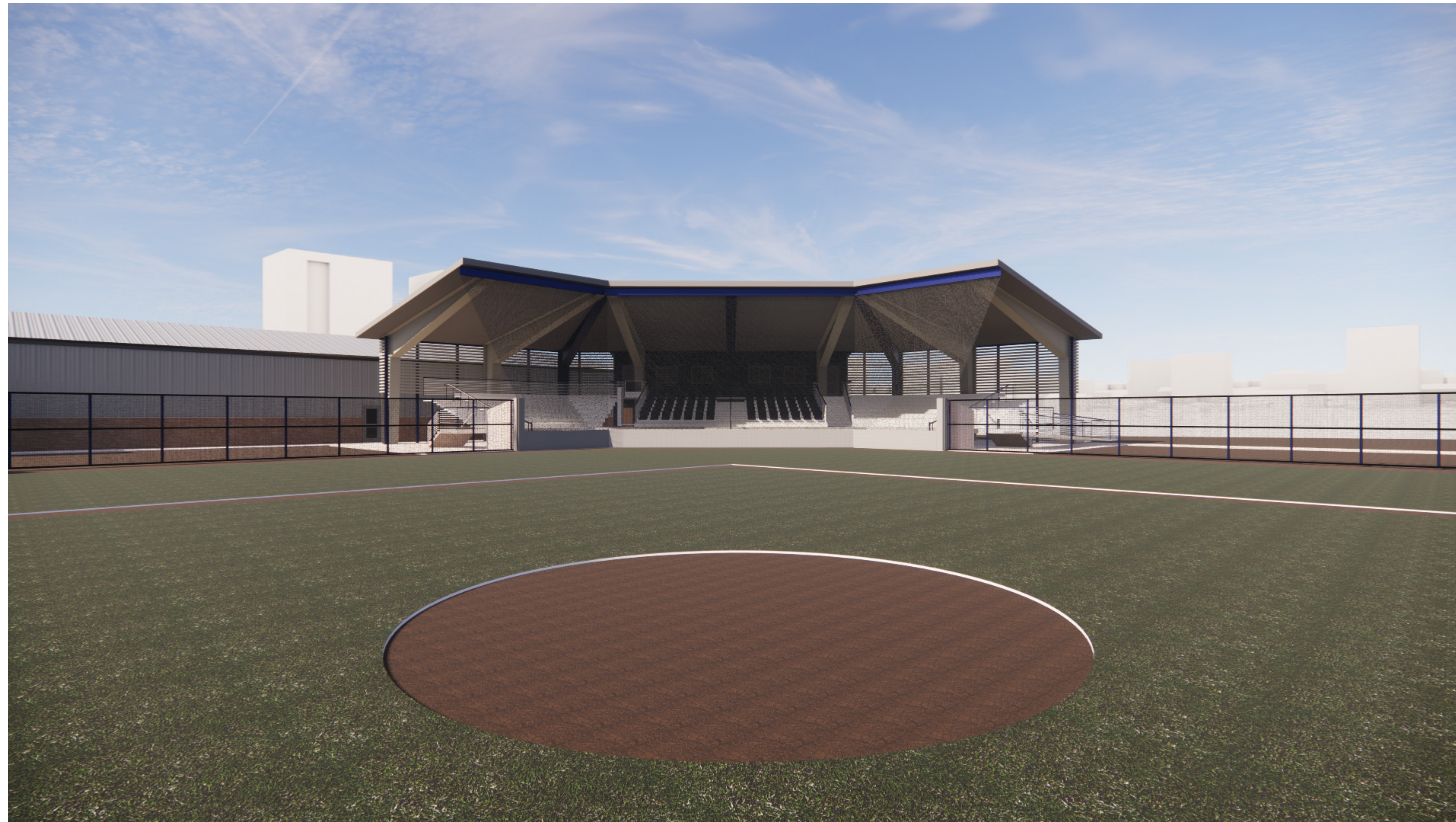


DALE | BAILEY

J a c k s o n • B i l o x i

AN ASSOCIATION

M i s s i s s i p p i



Meridian School District



Meridian, MS

DPA PN: 22034

Schematic Design
November 8, 2022

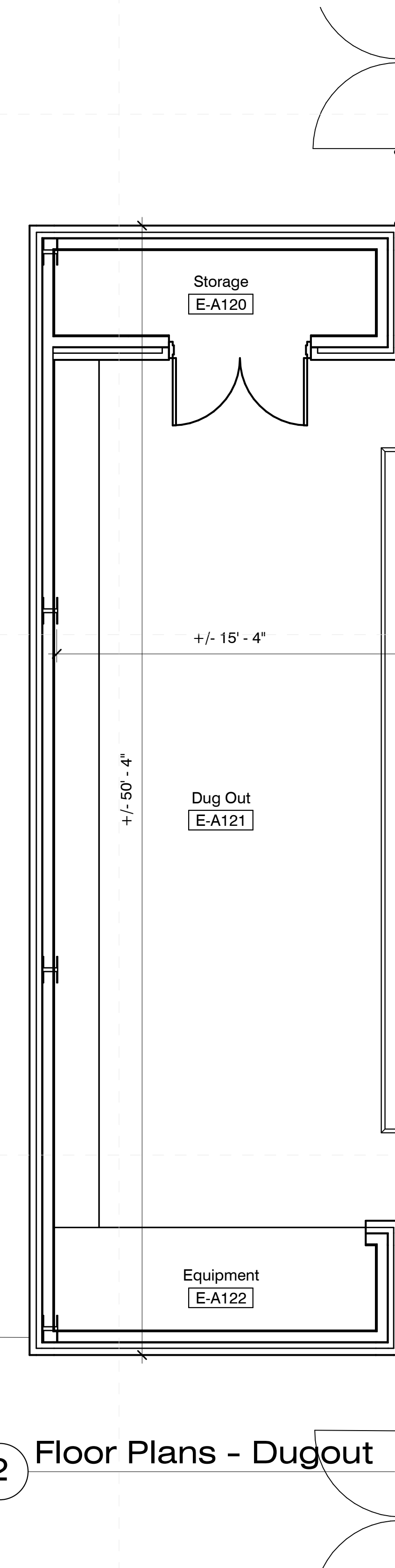
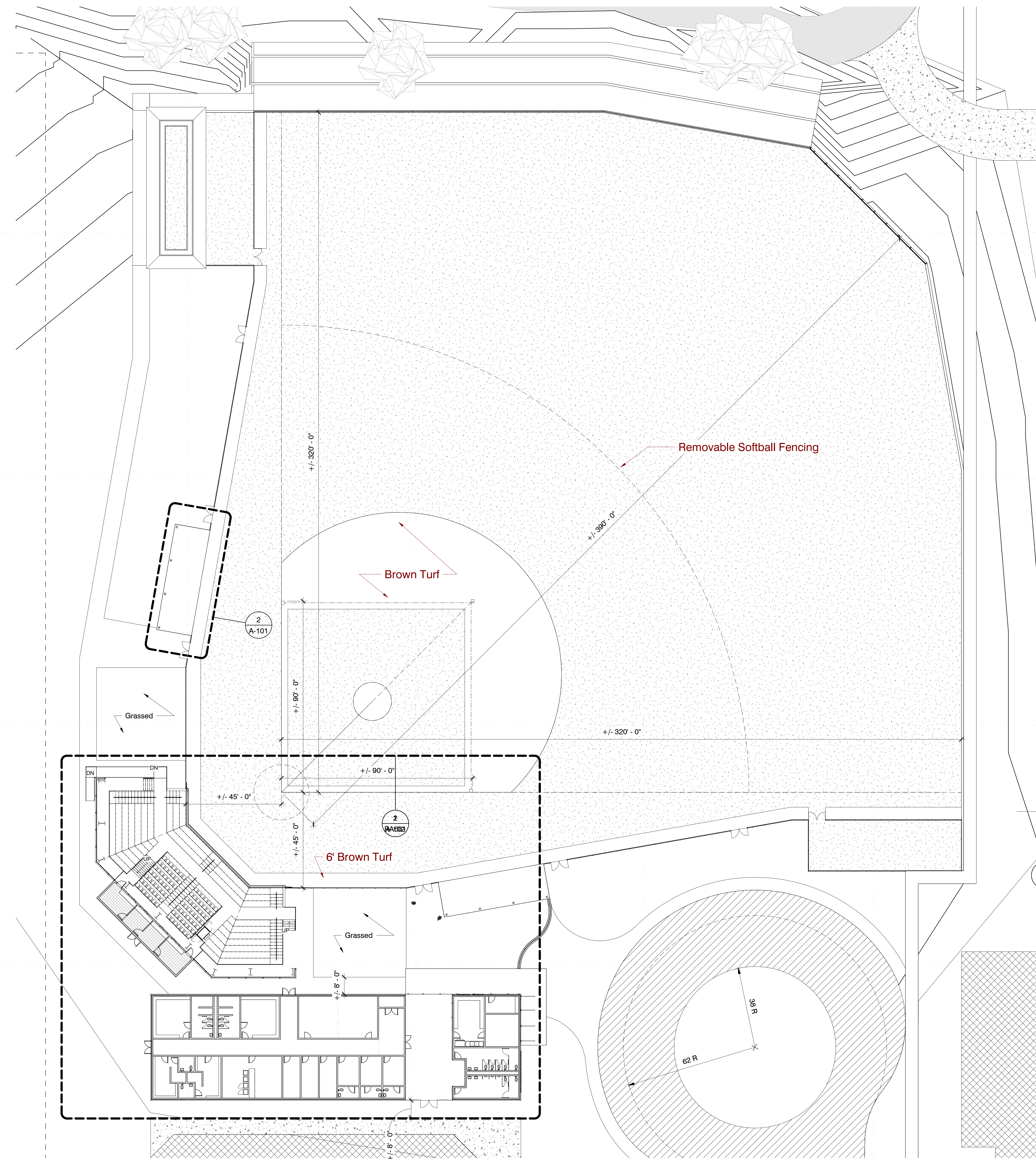
Superintendent Dr. Amy Carter

Board of Education

Board President	Mrs. Sally Gray
Board Vice-President	Mrs. Beverly Pennington
Secretary	Mr. Ron Turner, Sr.
Board Member	Ms. Gwendolyn Hardaway

Team

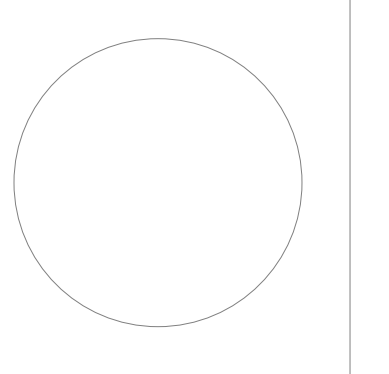
Owner	Meridian Public School District
Architect	Dale Bailey, an association
Structural	Structural Design Group
Mechanical	GSK Mechanical, Inc.
Electrical	The Power Source, PLLC
Civil	Carter Miller Sansing, Ltd.



2 Floor Plans - Dugout

1 Stadium & Field House

10/28/2022 8:05:33 AM C:\Users\pmpur\Documents\22034_Meridian_High_Athletics_paulpusey\220HY.rvt



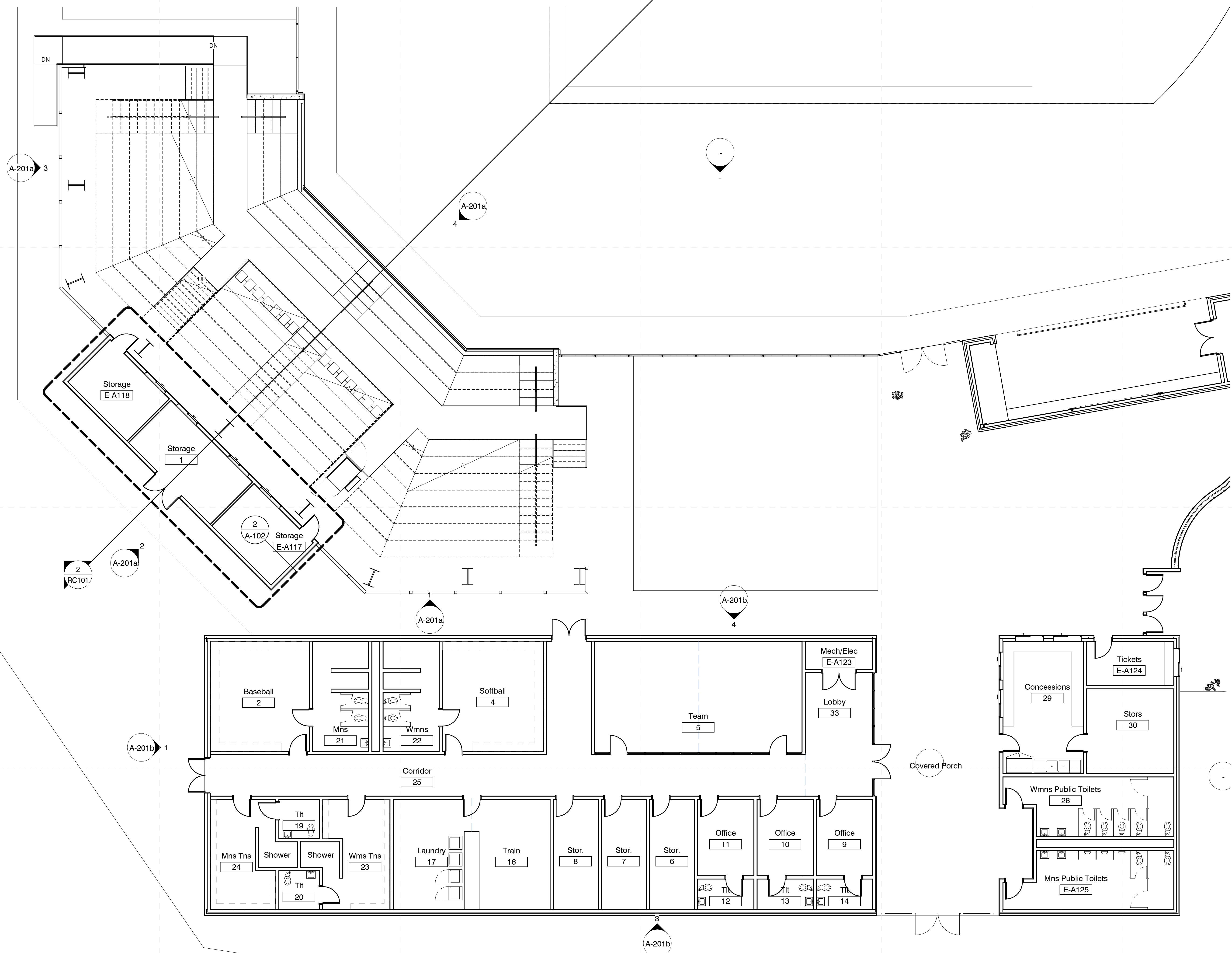
Meridian School District
Meridian, MS

Schematic Design

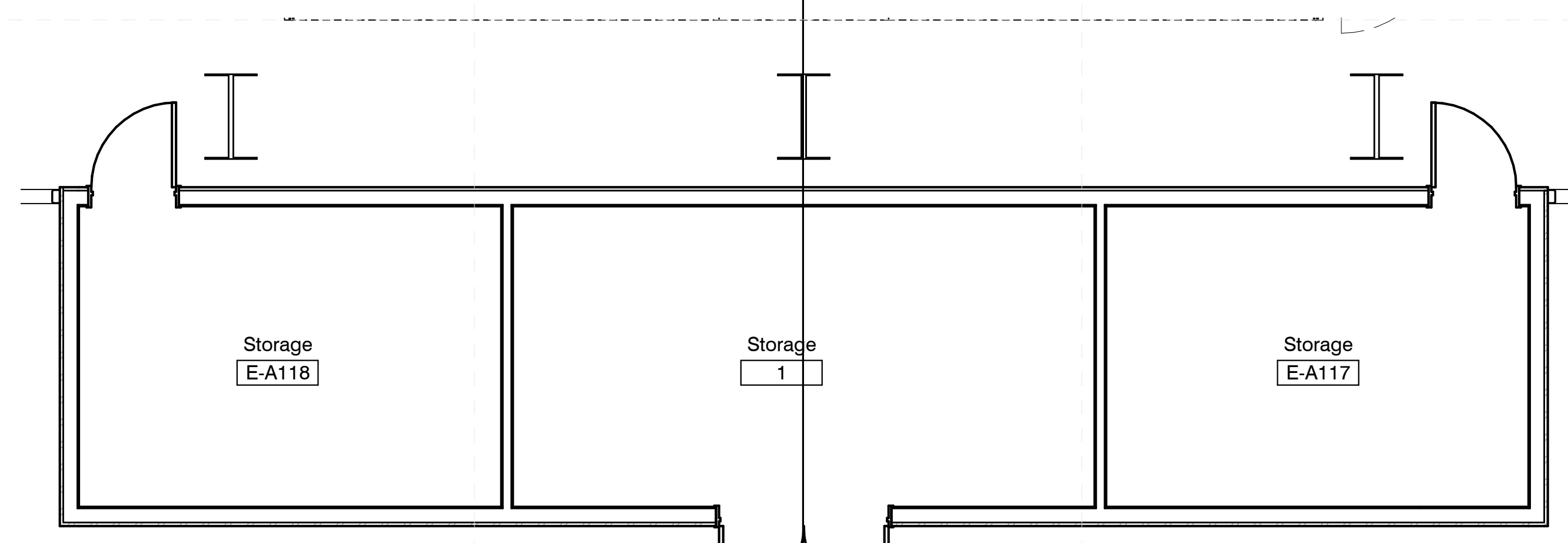
Project No	22034
Date	November 8, 2022
Revisions	Rev Date
Drawn	PPu
Checked	RBI

A-102

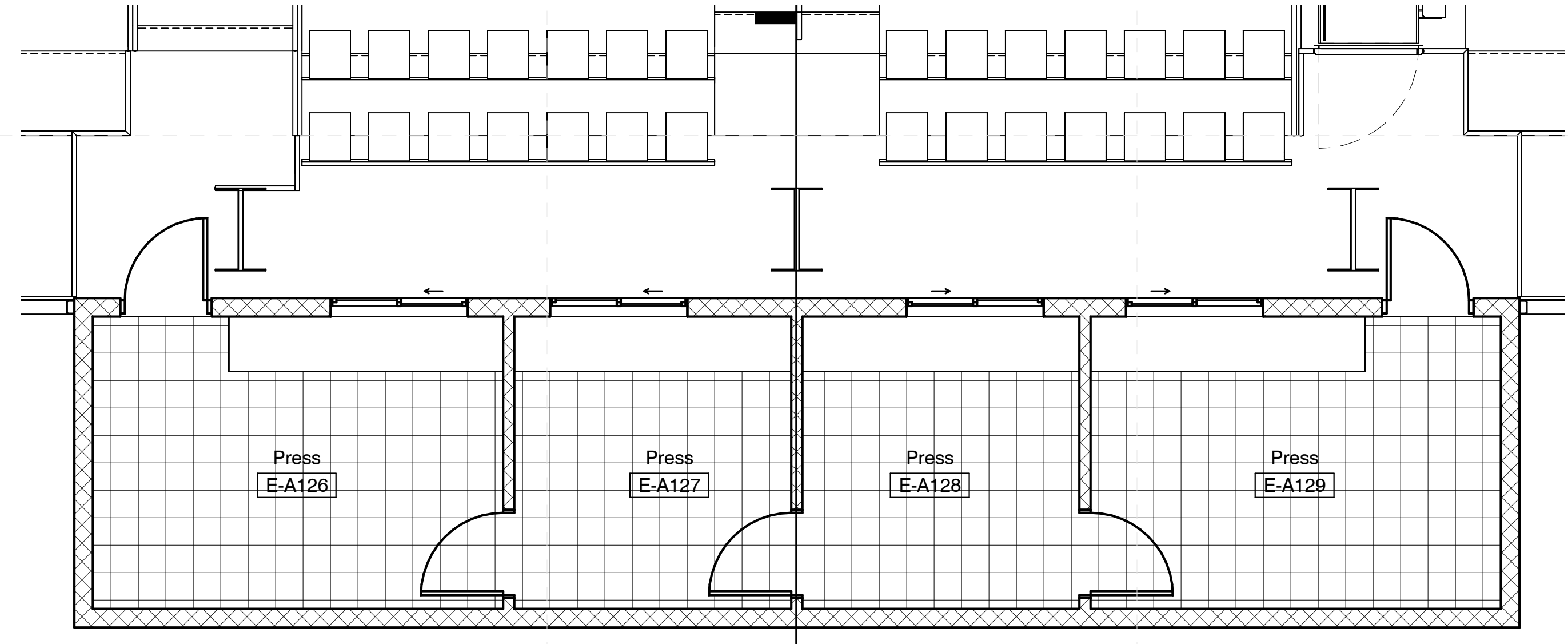
Floor Plans - Base Bid



1 Floor Plans - Stadium & Field House
1/8" = 1'-0"

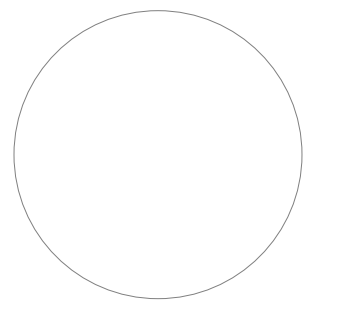


2 Floor Plans - Press Box Level 1
1/4" = 1'-0"



3 Floor Plans - Press Box Level 2
1/4" = 1'-0"

10/28/2022 8:05:34 AM C:\Users\pmpur\Documents\22034_Meridian High Athletics_paulpusey\220HY.rvt



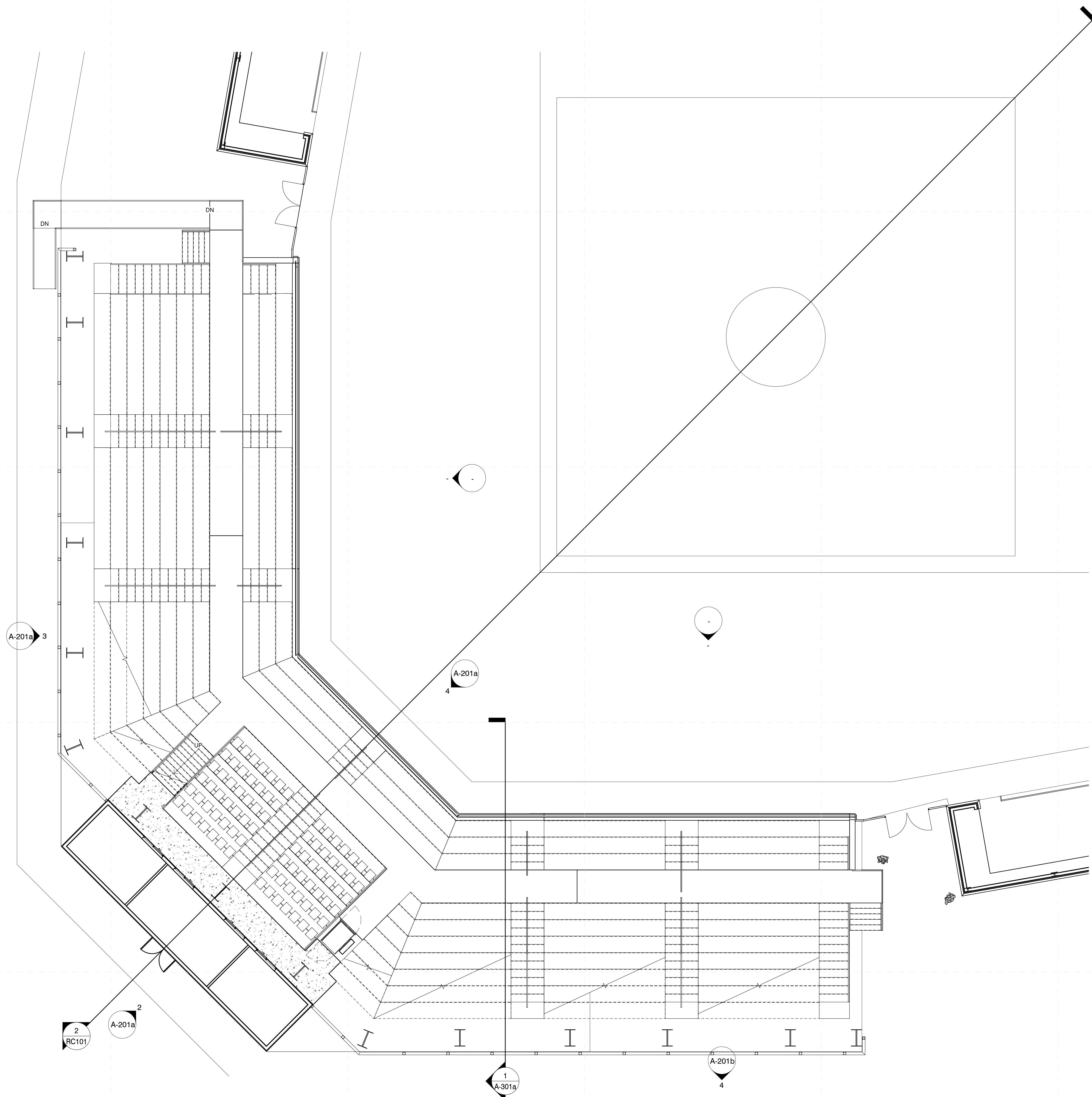
Meridian School District
Meridian, MS

Schematic
Design

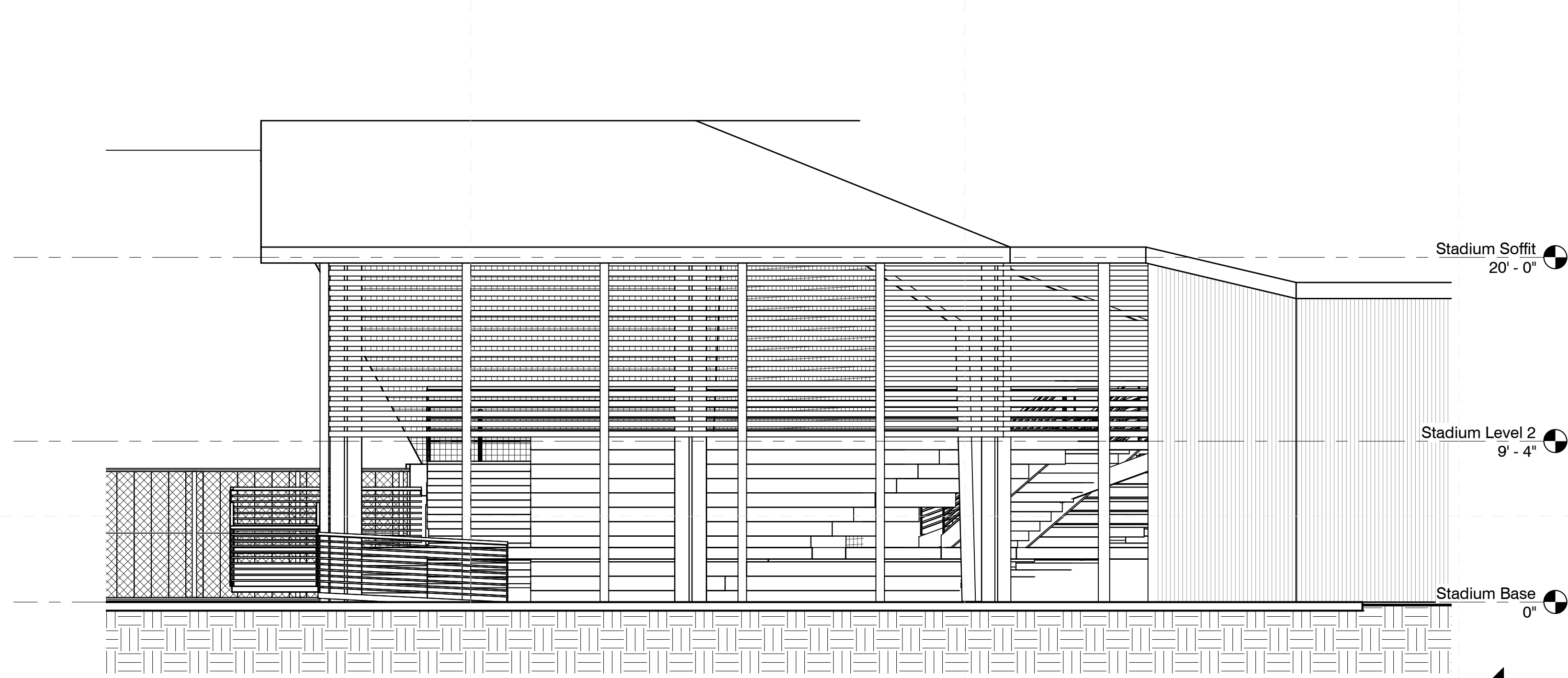
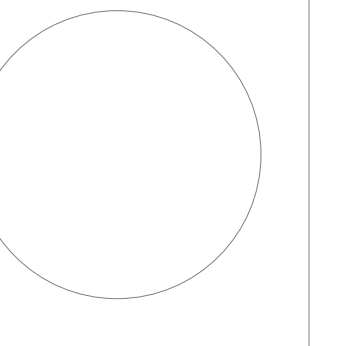
Project No	22034
Date	November 8, 2022
Revisions	Rev Date
Drawn	Author
Checked	Checker

A-122

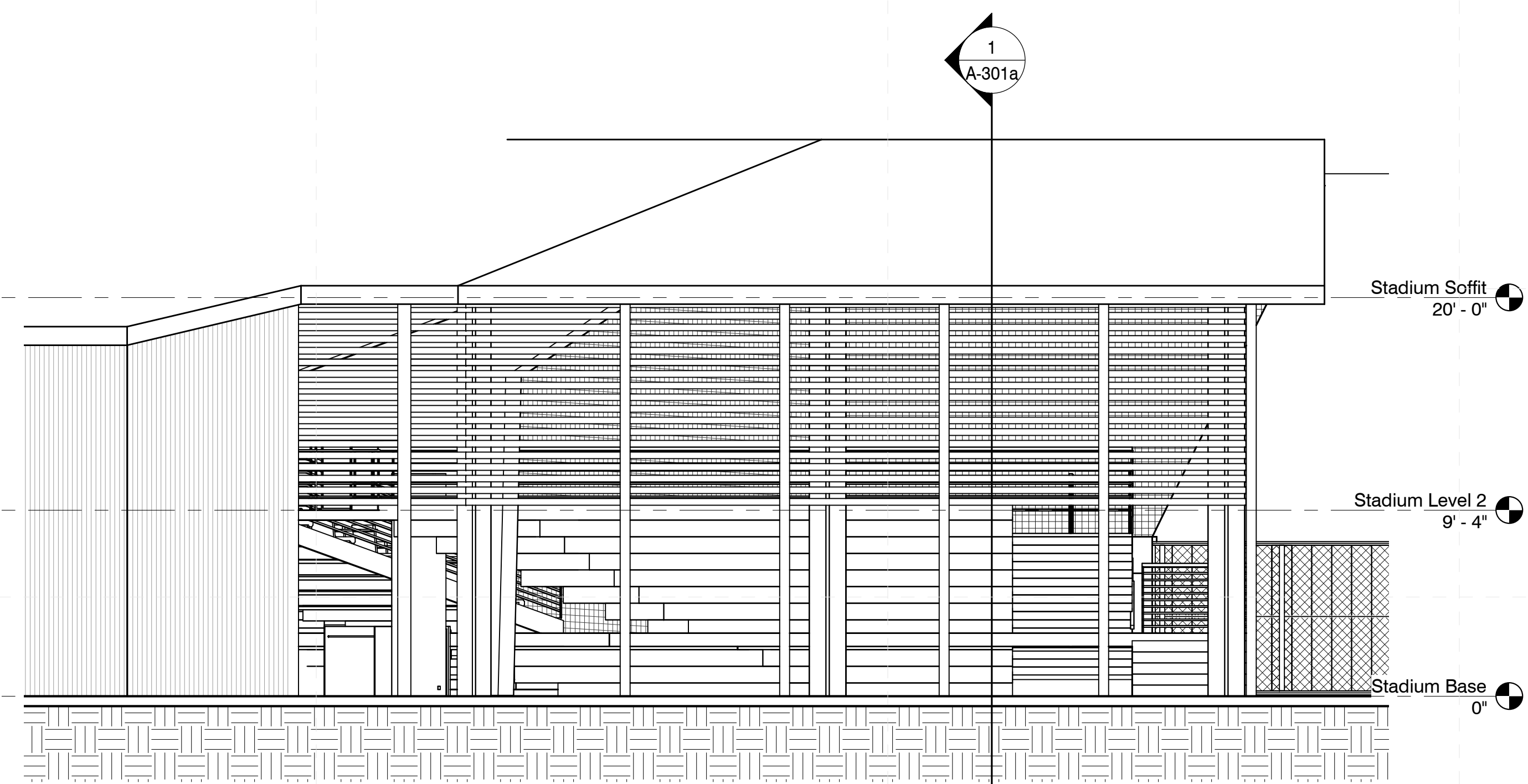
Floor Plans with Alt 001



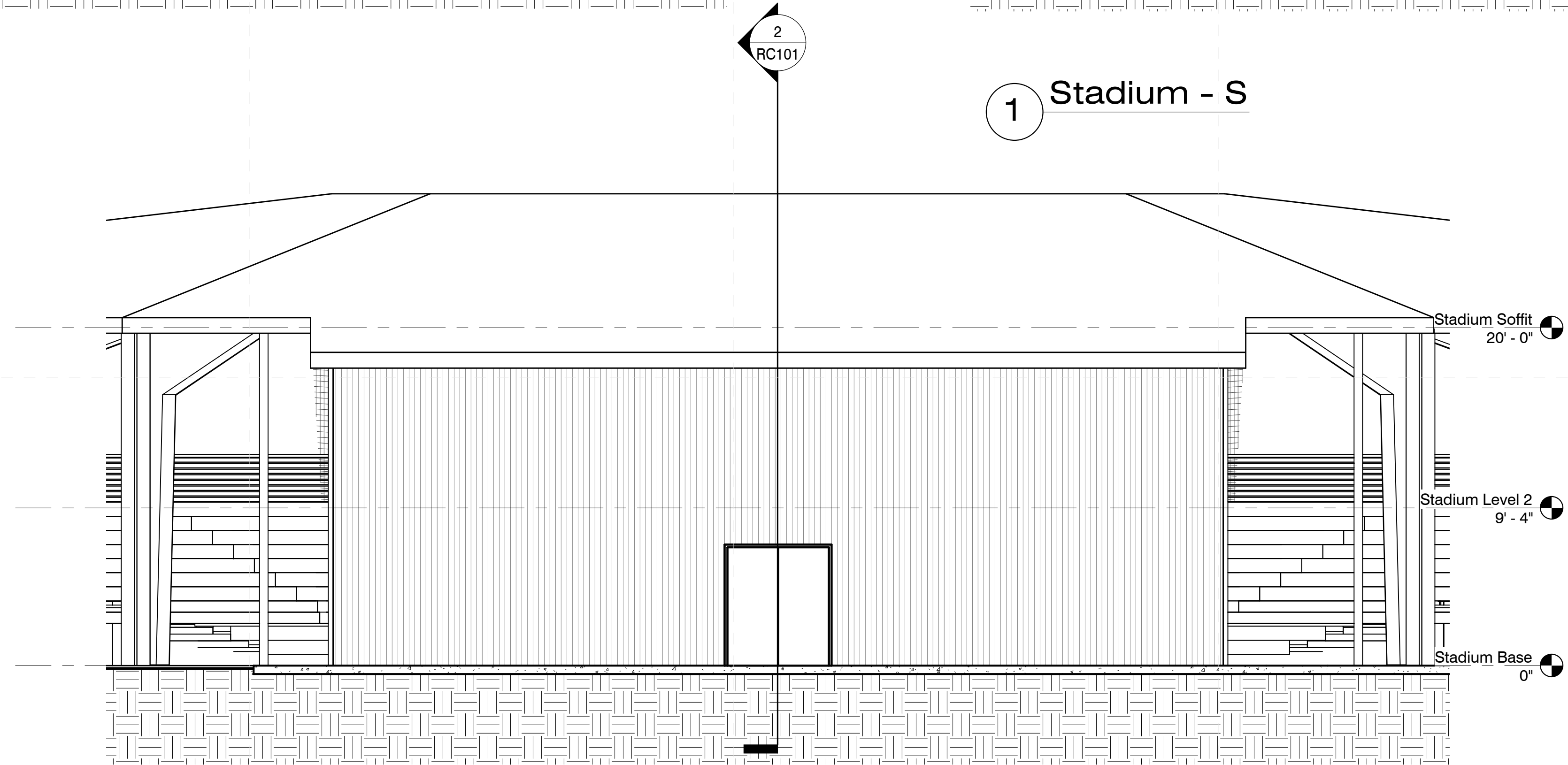
1 Floor Plans - Stadium & Field House Alt 001



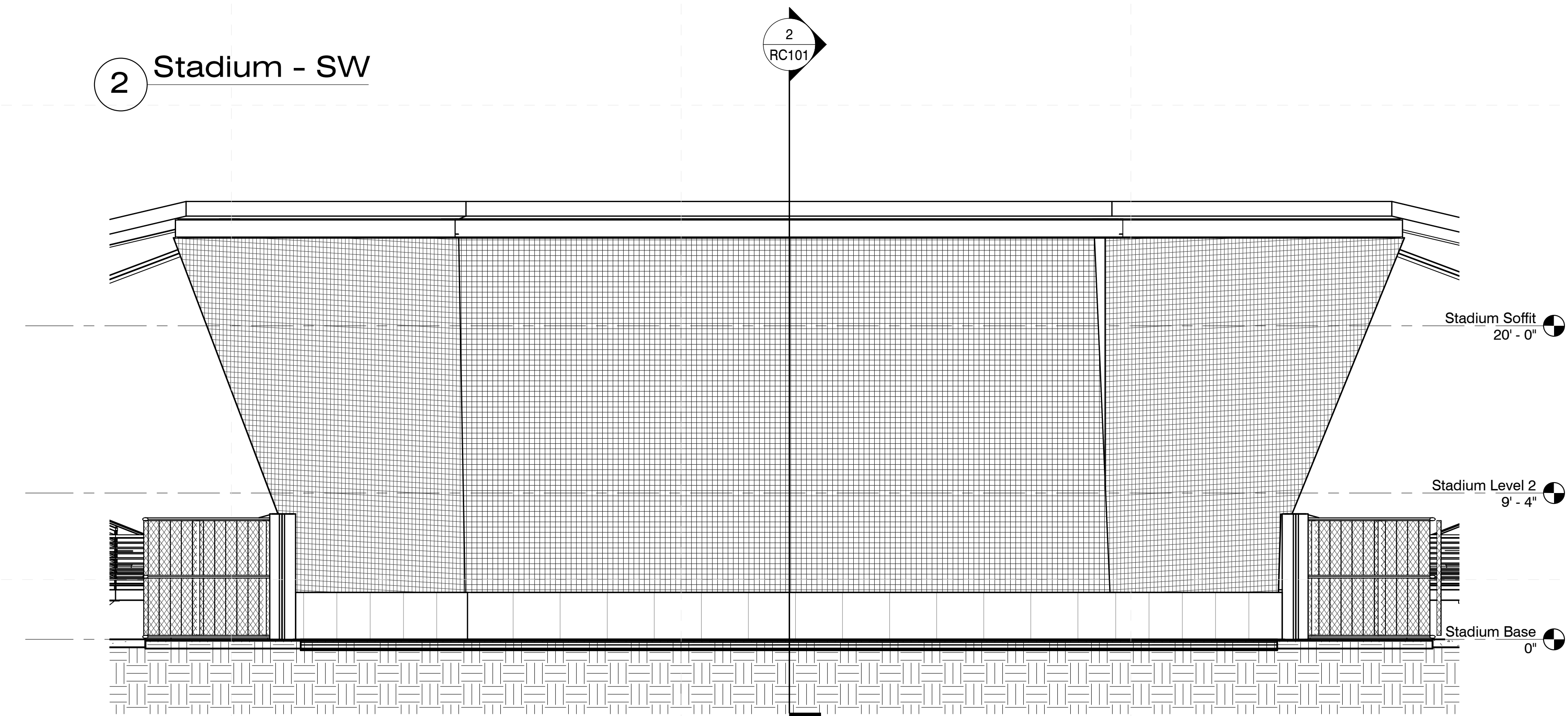
3 Stadium - W



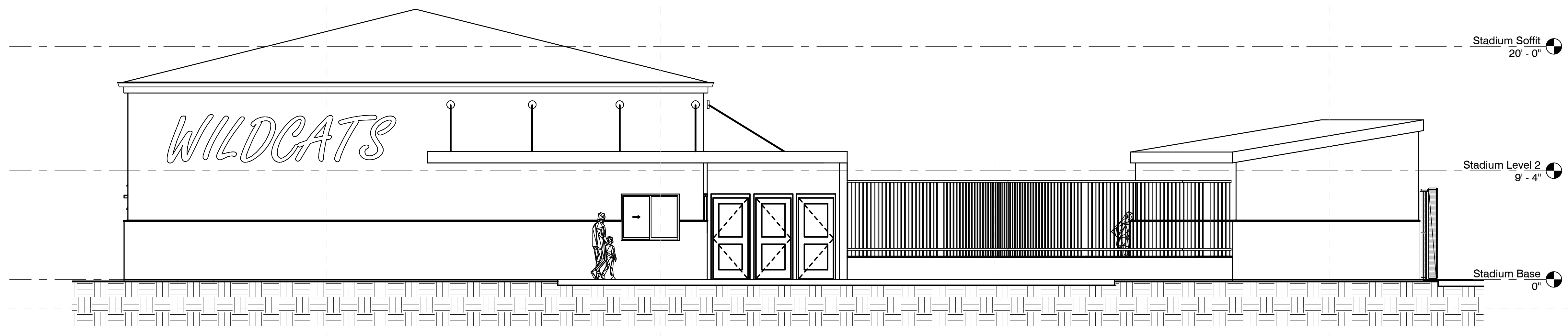
1 Stadium - S



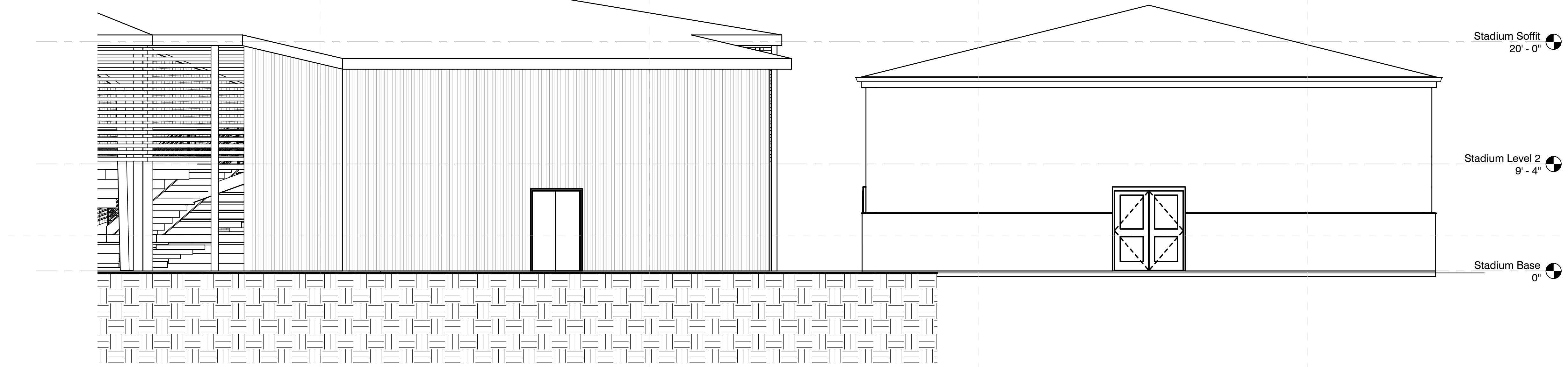
2 Stadium - SW



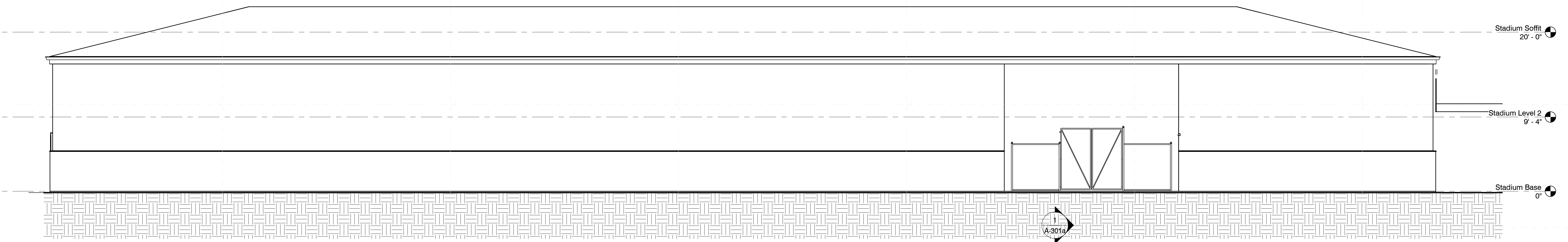
4 Stadium - NE



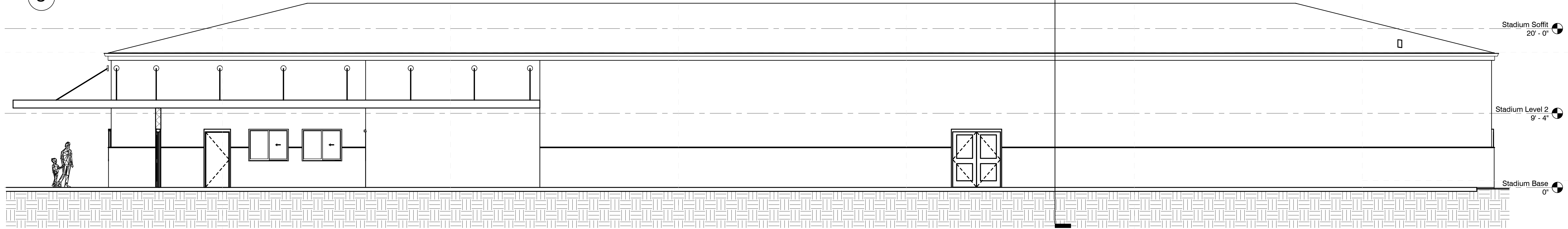
2 Field House - E



1 Field House - W

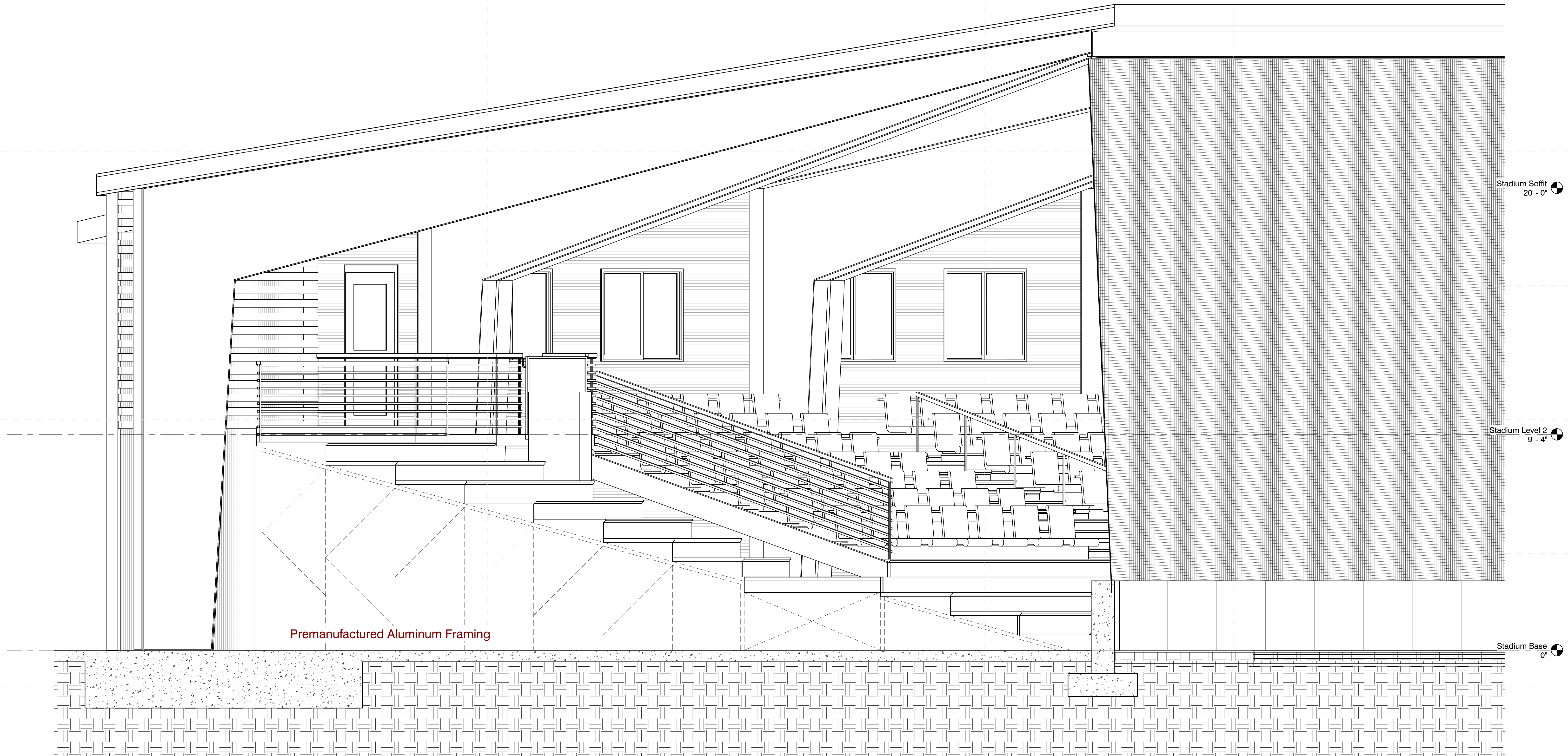
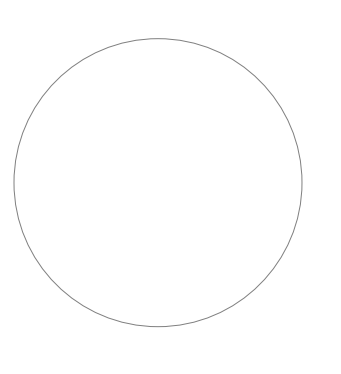


3 Field House - S

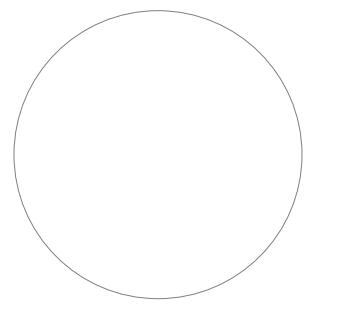
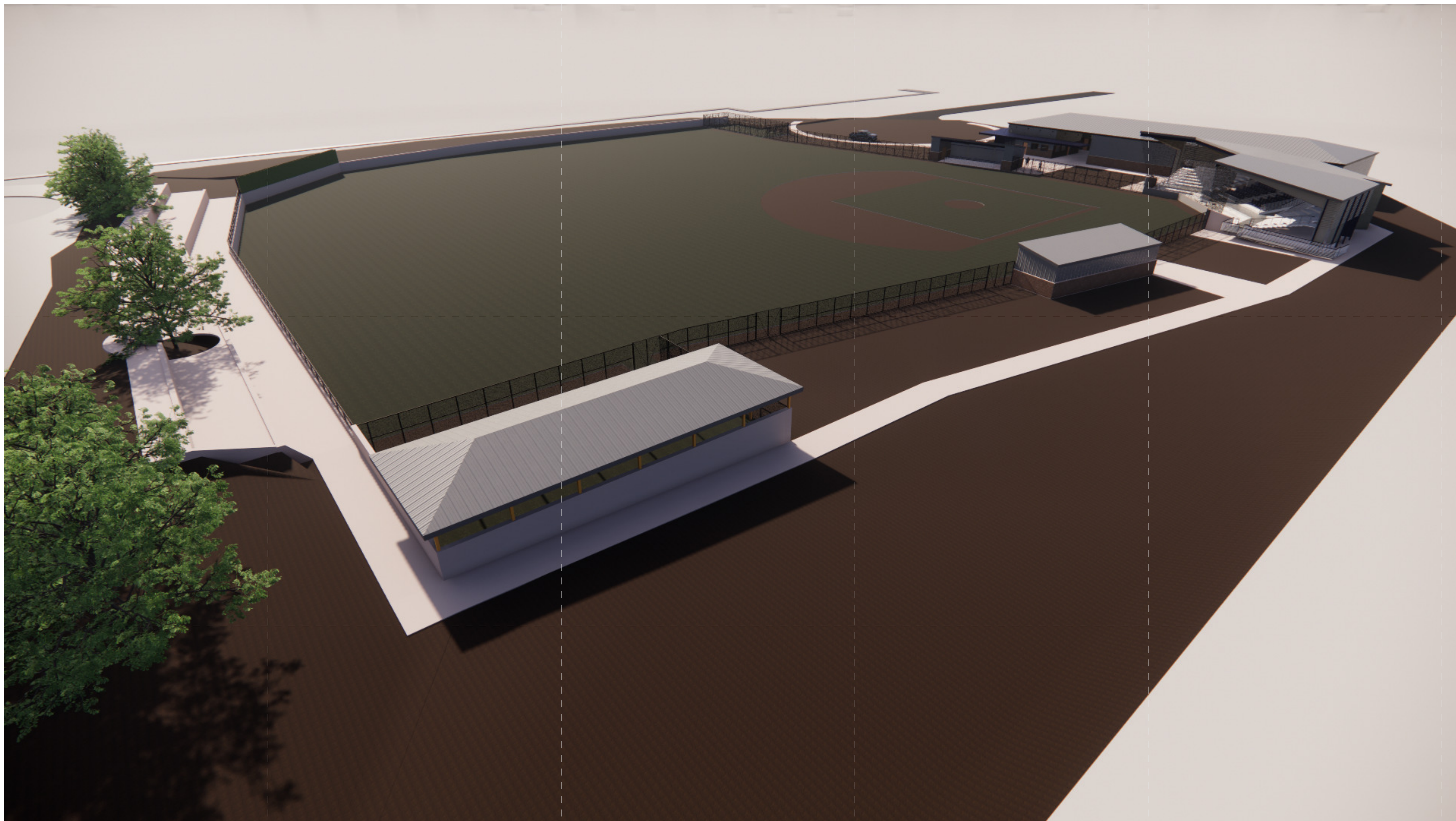
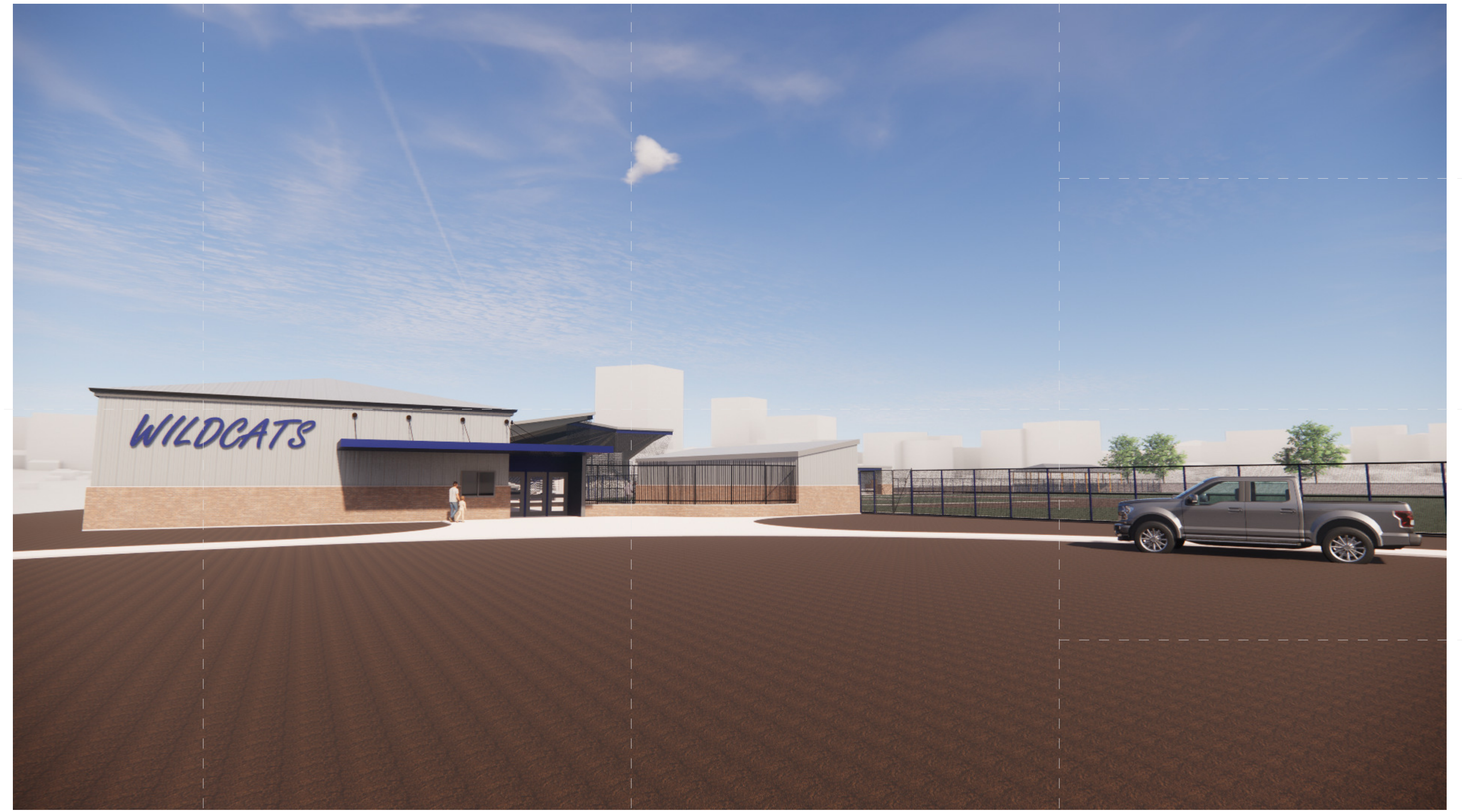
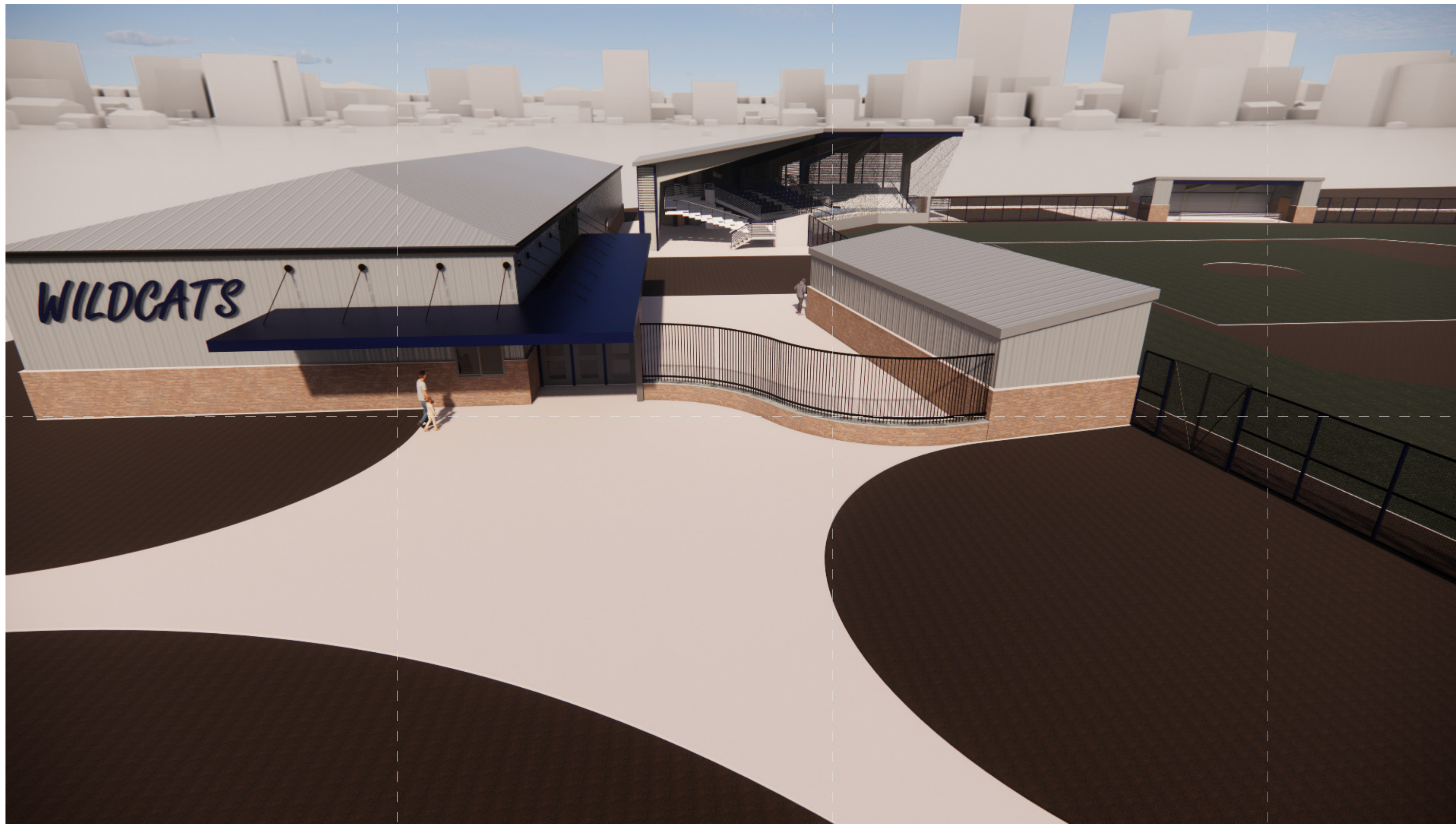


4 Field House - N

10/28/2022 8:05:38 AM C:\Users\pmpur\Documents\22034\Meridian High Athletics_paulpusew\220HY.rvt



1 Stadium Cross Section



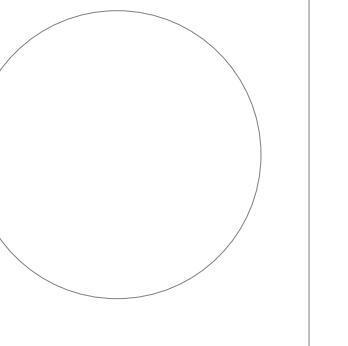
Meridian School District
Meridian, MS

Schematic
Design

Project No	22034
Date	November 8, 2022
Revisions	Rev Date
Drawn	PPu
Checked	RBI

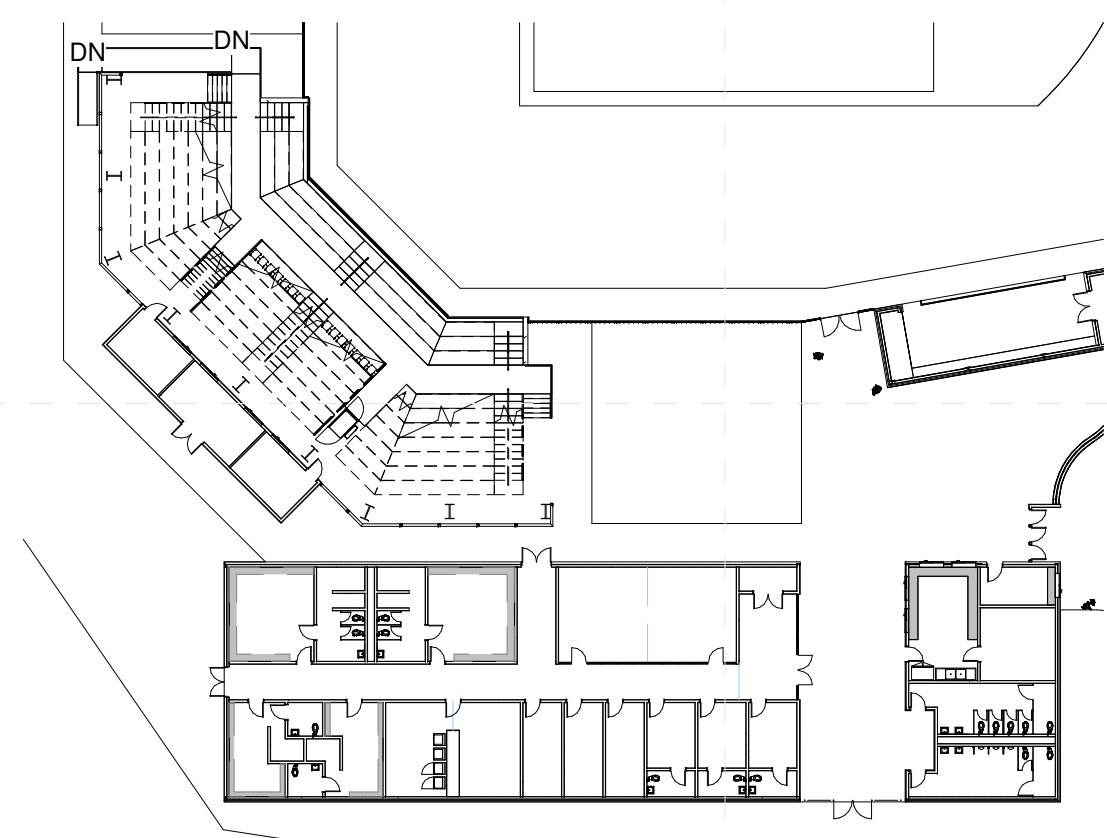
RA101

Imaging

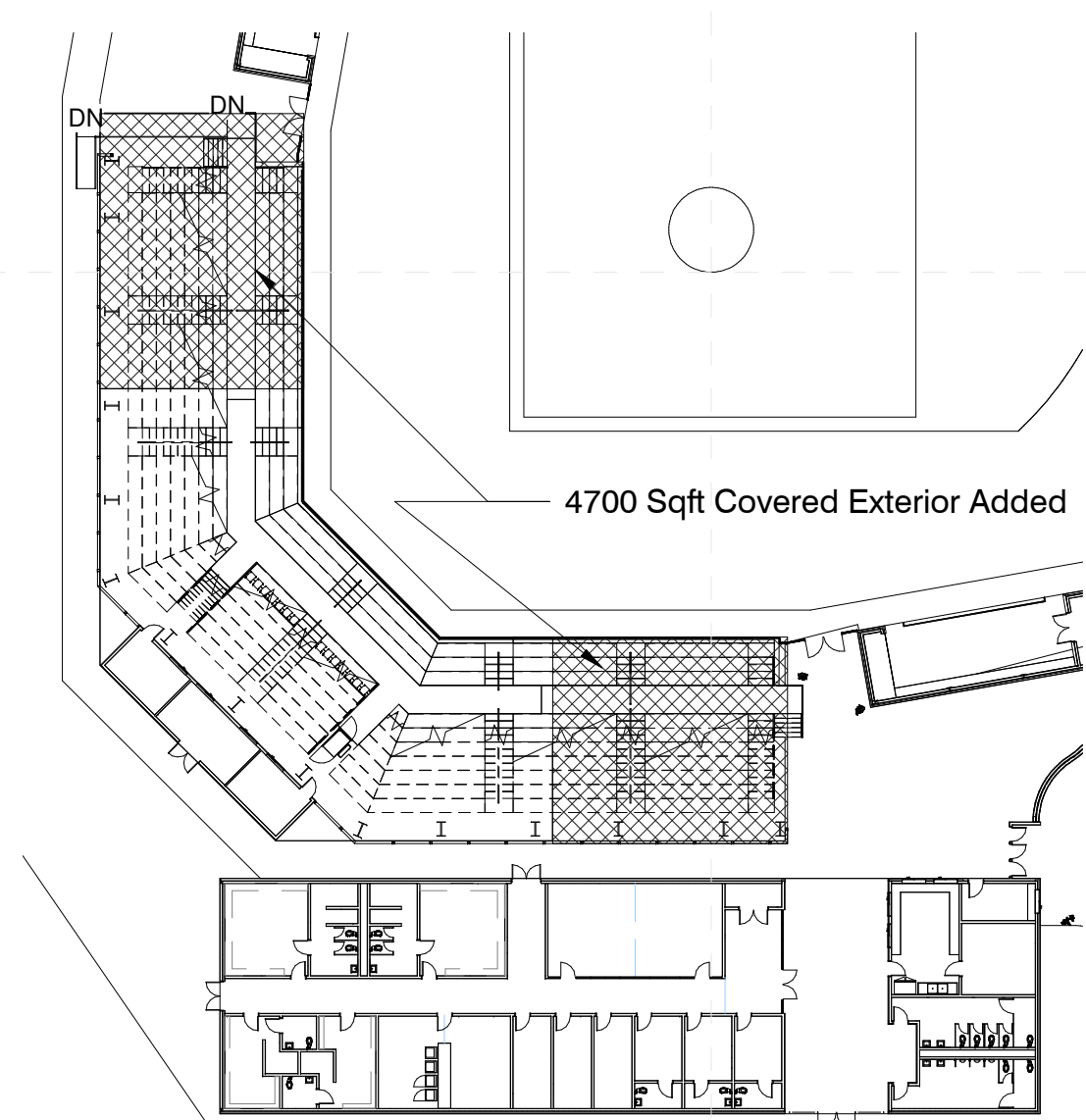


Area Summary - New & Conditioned

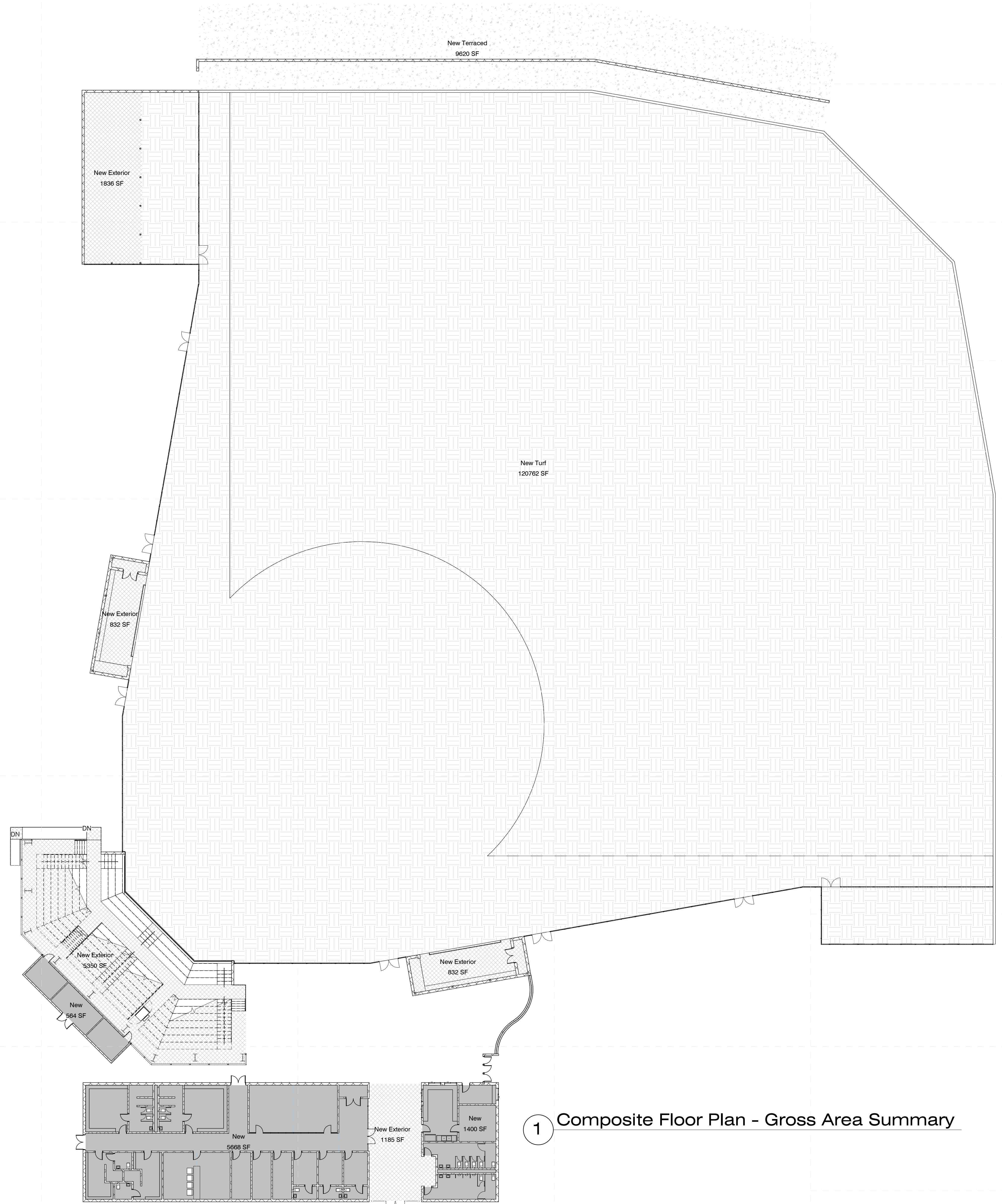
Room Name	Construction Designation	Conditioning	Area	Comments
Storage	New		219 SF	
Baseball	New		345 SF	
Softball	New		353 SF	
Team	New		363 SF	
Stor.	New		157 SF	
Stor.	New		157 SF	
Stor.	New		157 SF	
Office	New		136 SF	
Office	New		136 SF	
Office	New		136 SF	
Tit	New		54 SF	
Tit	New		54 SF	
Tit	New		54 SF	
Train	New		256 SF	
Laundry	New		256 SF	
Tit	New		50 SF	
Tit	New		49 SF	
Mns	New		188 SF	
Wmns	New		188 SF	
Wms Tns	New		247 SF	
Mns Tns	New		238 SF	
Corridor	New		947 SF	
Wmns Public Toilets	New		288 SF	
Concessions	New		338 SF	
Stors	New		236 SF	
Lobby	New		265 SF	
Storage	New		159 SF	
Storage	New		159 SF	
Storage	New		55 SF	
Mech/Elec	New		60 SF	
Tickets	New		123 SF	
Mns Public Toilets	New		284 SF	
Press	New		159 SF	
Press	New		107 SF	
Press	New		107 SF	
Press	New		159 SF	
Grand total: 36			7240 SF	



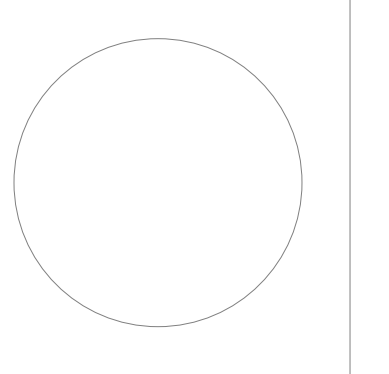
2 Composite Floor Plan - Net Area Summary - Base Bid



3 Composite Floor Plan - Net Area Summary - With Alt 001



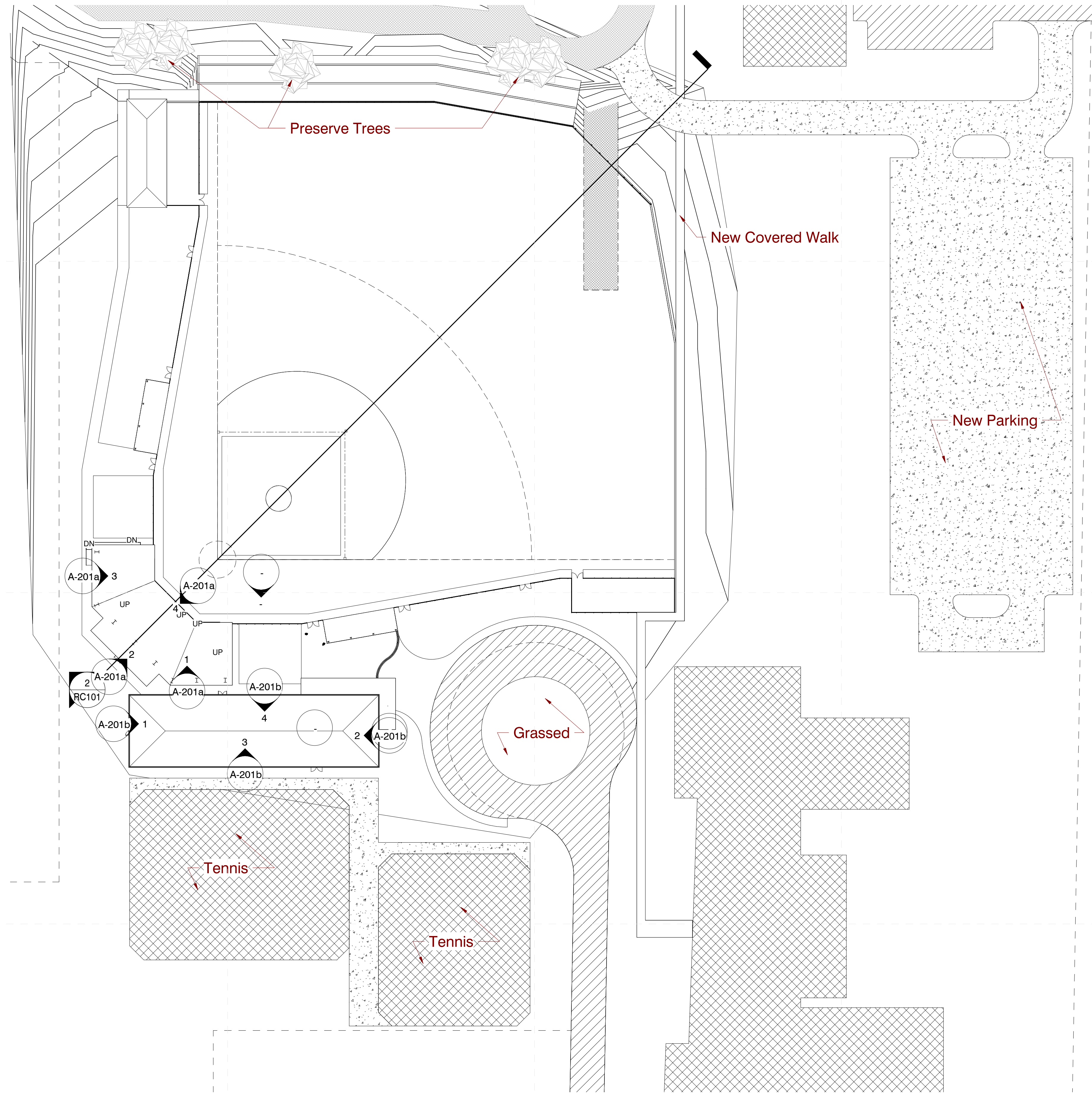
1 Composite Floor Plan - Gross Area Summary



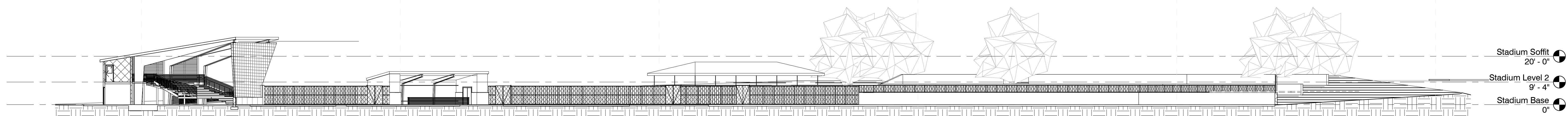
Meridian School District
Meridian, MS

Schematic
Design

Project No	22034
Date	November 8, 2022
Revisions	Rev Date
Drawn	Author
Checked	Checker



1 Site Layout
1" = 40'-0"



2 Site Cross Section