

DALE | BAILEY

Jackson • Biloxi

AN ASSOCIATION

Mississippi

Northwest Middle School



Magnolia Middle School



Meridian School District Bond Issue



Meridian, MS

DPA PN: 22034

Schematic Design
November 8, 2022

Superintendent Dr. Amy Carter

Board of Education

Board President	Mrs. Sally Gray
Board Vice-President	Mrs. Beverly Pennington
Secretary	Mr. Ron Turner, Sr.
Board Member	Ms. Gwendolyn Hardaway

Team

Owner	Meridian Public School District
Architect	Dale Bailey, an association
Structural	Structural Design Group
Mechanical	GSK Mechanical, Inc.
Electrical	The Power Source, PLLC
Civil	Carter Miller Sansing, Ltd.

Northwest Middle School

Architects

One Jackson Place 250
188 East Capitol Street
Jackson, MS 39201
p 601.352.5411

201 Park Court Suite B
Ridgeland, MS 39157
p 601.790.9432

161 Lameuse St. Suite 201
Biloxi, MS 39530
p 228.374.1409

dalebaileyplans.com



Car Drop Off & Gym Entry



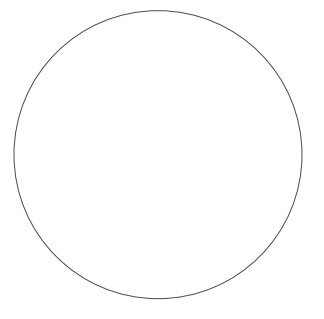
Meridian School District Bond Issue
Northwest Middle: 32nd Street, Meridian, MS

Schematic
Design

Project No	21097
Date	Nov 8, 2022
Revisions	Rev Date
Drawn	PPU
Checked	RBI

G-000c

General Sheet



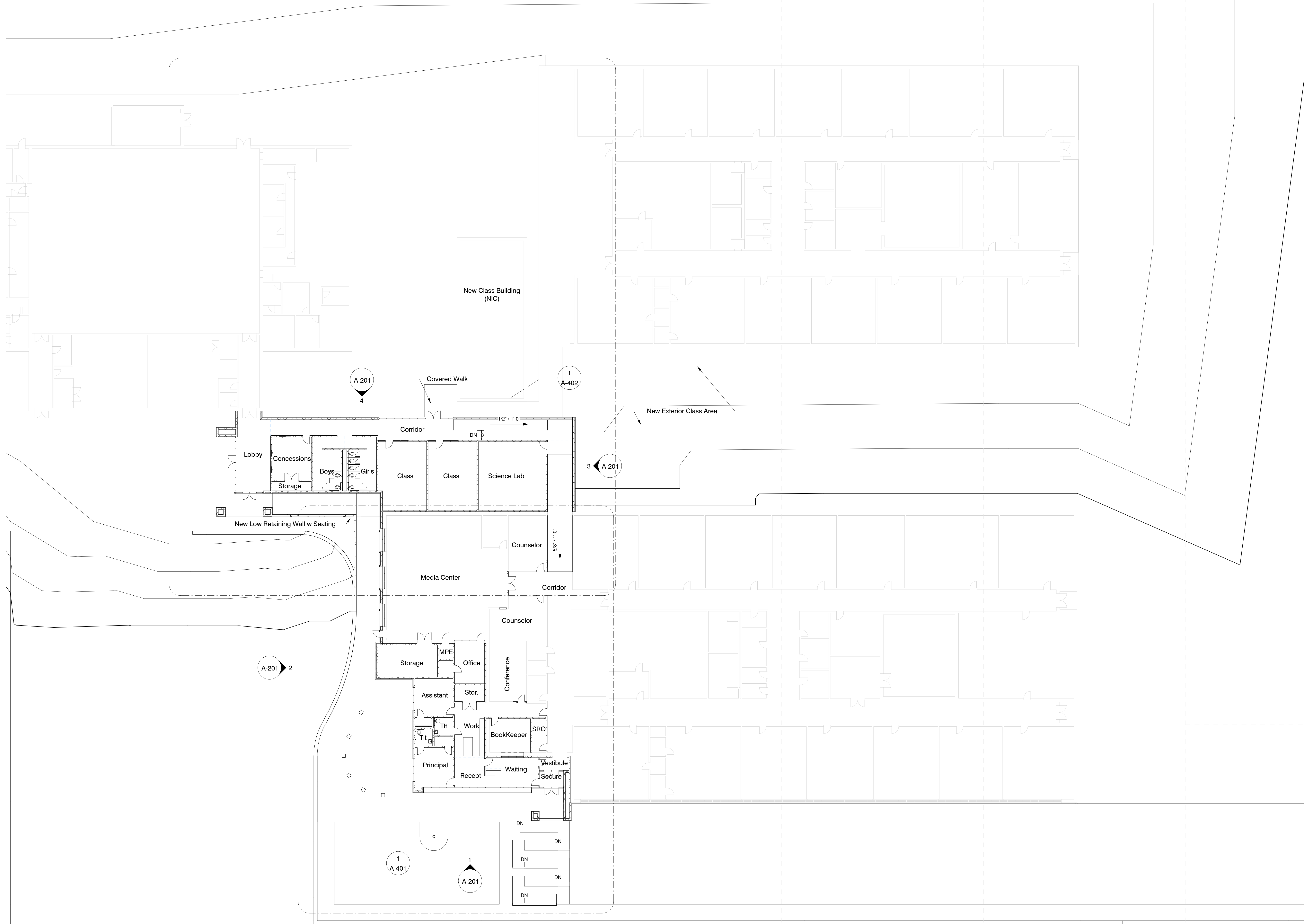
Meridian School District Bond Issue
Northwest Middle: 32nd Street, Meridian, MS

Schematic
Design

Project No	21097
Date	Nov 8, 2022
Revisions	Rev Date
Drawn	PPU
Checked	RBI

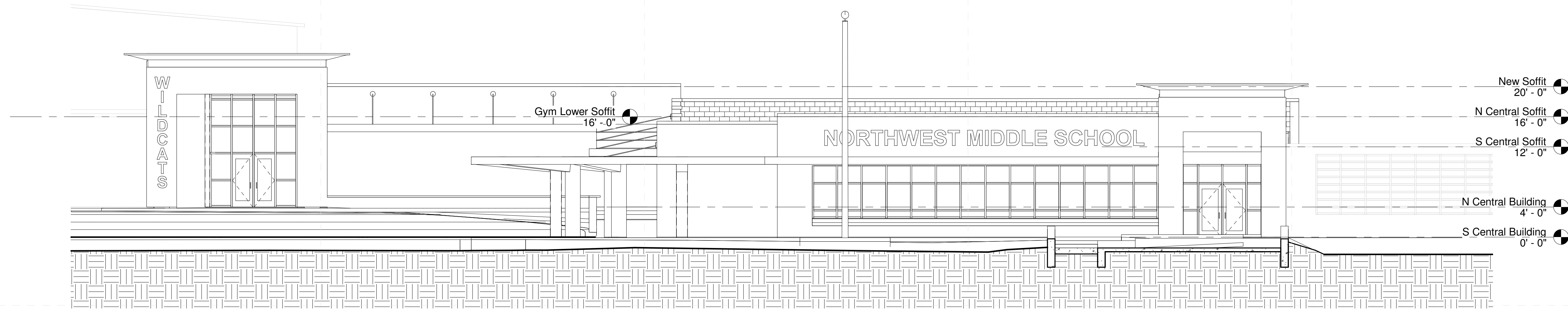
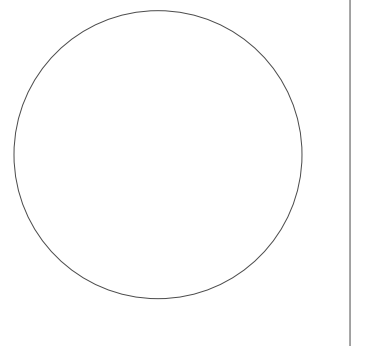
A-101

Composite Floor Plan

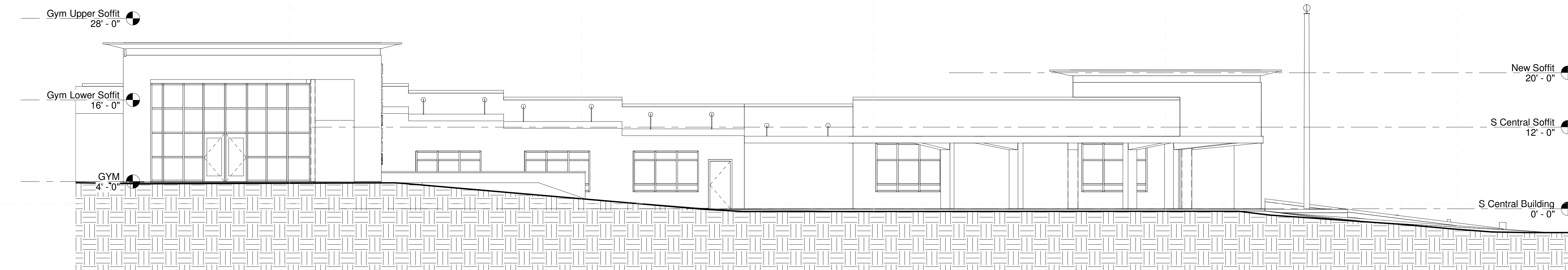


1 Composite Floor Plan - New
1/16" = 1'-0"

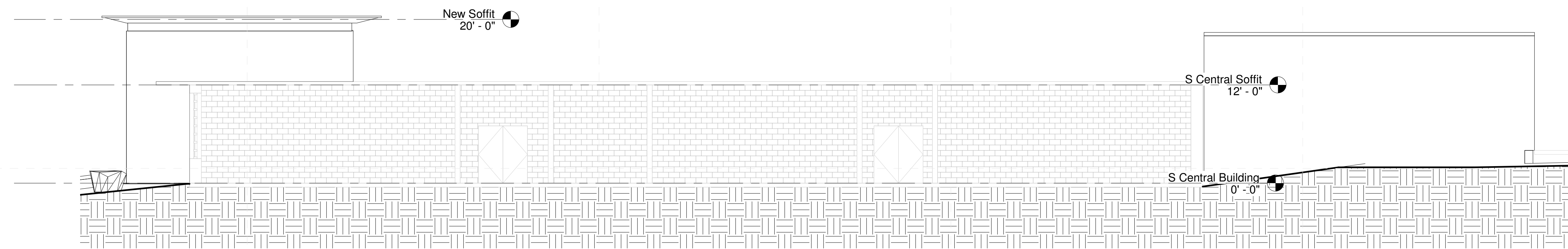
10/5/2022 9:37:42 AM C:\Users\pmpur\Documents\22034 Northwest Middle_paulpuren\220HY.rvt



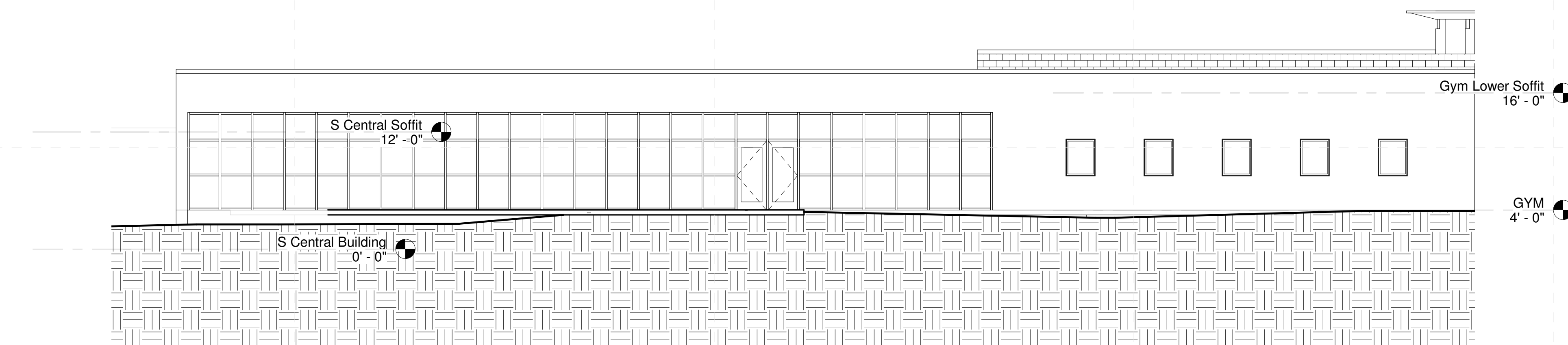
1 Addition Elevation - S
1/8" = 1'-0"



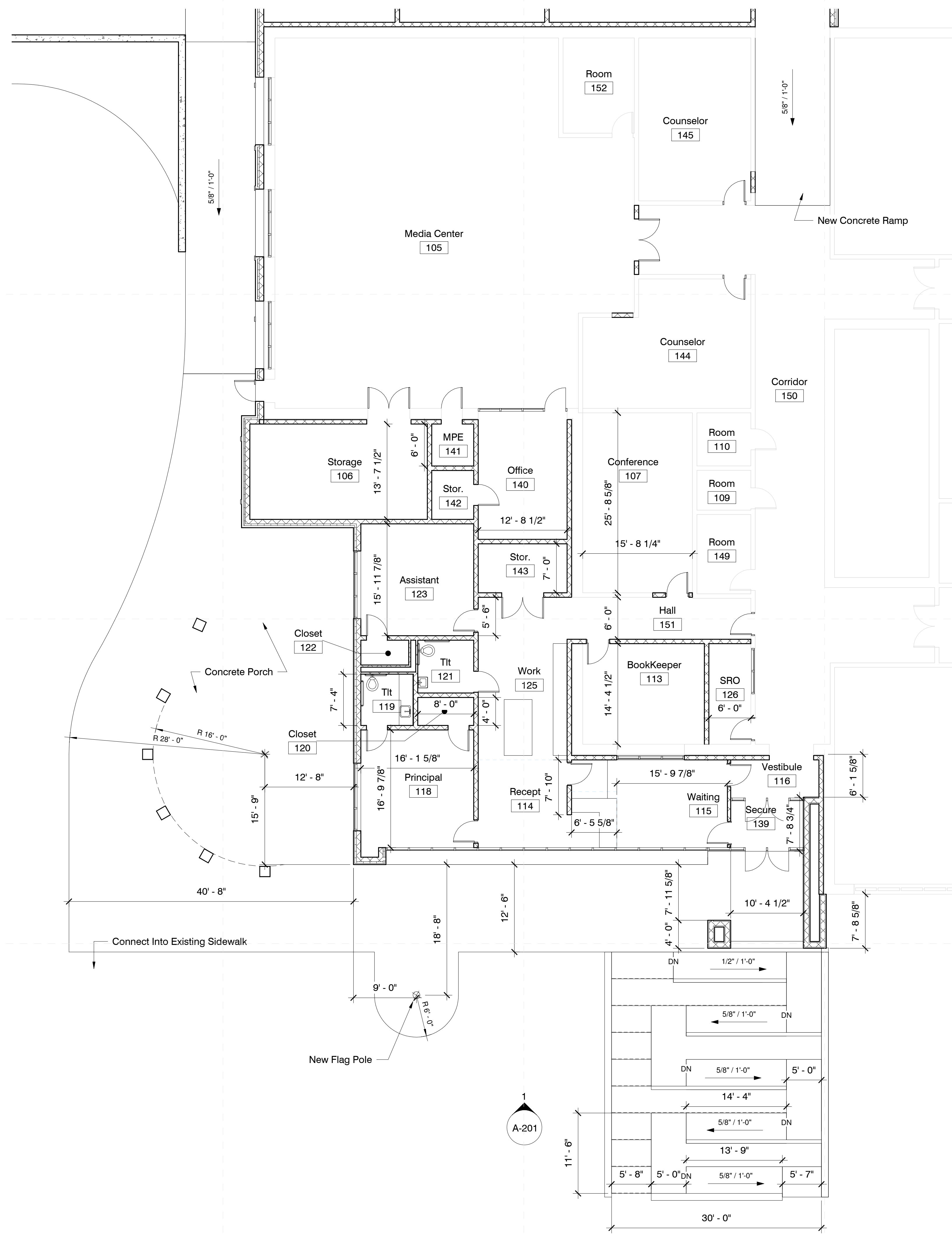
2 Addition Elevation - W
1/8" = 1'-0"



3 Addition Elevation - E
1/8" = 1'-0"



4 Addition Elevation - N
1/8" = 1'-0"



1 Floor Plan - Lower Level
1/8" = 1'-0"

General Enlarged Plan Notes

1. All interior walls to be type "B1" UNO
2. All furniture shown in plan is NIC.
3. All flooring is to extend underneath casework.
4. All door frames in masonry wall to be located 8" off perpendicular wall (typ.) unless indicated otherwise. All door frames in metal stud walls to be located 4" off perpendicular walls (typ.) unless indicated otherwise. Provide min. clear of 12" on push side of door and 18" on pull side.
5. Reference building elevations (A-200 Sheets) for exterior control joint locations.
6. All DS tie into boot and underground water line unless otherwise noted, see Civil.
7. See AG series sheets for floor finish patterns.
8. All CMU wall corners & window sills to have 1" diameter radius. Bottom course of CMU corners are not to be radiused to receive finish base as scheduled.
9. All backsides of bathroom partition doors and single unit restroom doors to have a Coat Hook (CH) installed.
10. All dimensions are to interior finish face U.N.O.

DALE BAILEY
AN ASSOCIATION

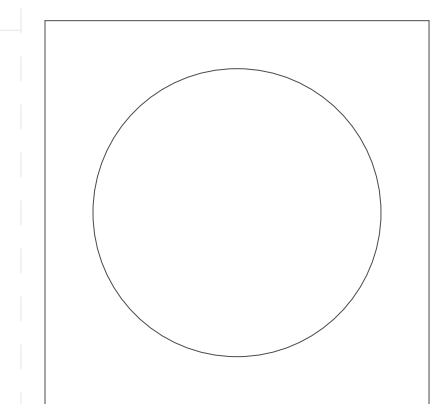
Architects

One Jackson Place 250
188 East Capitol Street
Jackson, MS 39201
p 601.352.5411

201 Park Court Suite B
Ridgeland, MS 39157
p 601.790.9432

161 Lameuse St. Suite 201
Biloxi, MS 39530
p 228.374.1409

dalebaileyplans.com

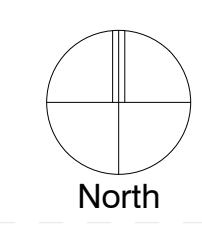


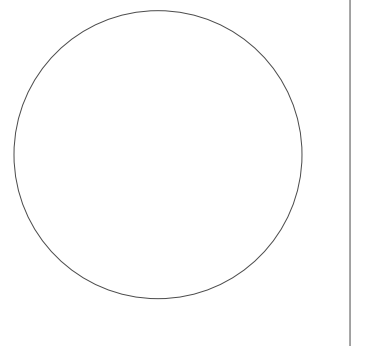
Meridian School District Bond Issue
Northwest Middle: 32nd Street, Meridian, MS

Schematic Design

Project No	21097
Date	Nov 8, 2022
Revisions	Rev Date
Drawn	PPU
Checked	RBI

10/5/2022 9:37:47 AM C:\Users\pmpur\Documents\22034 Northwest Middle_paulpurses\Y2OHY.rvt





Meridian School District Bond Issue
Northwest Middle: 32nd Street, Meridian, MS

Schematic Design

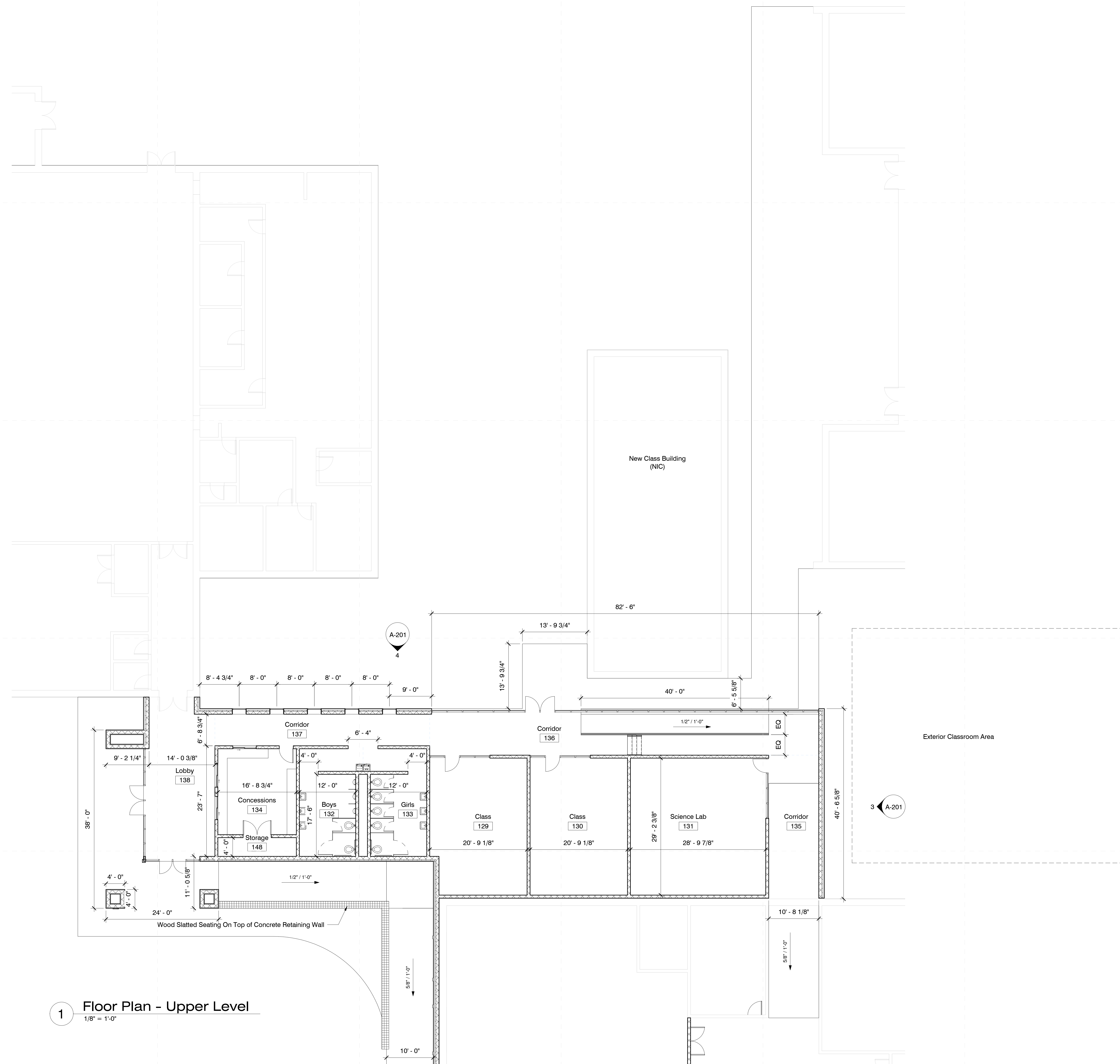
Project No	21097
Date	Nov 8, 2022
Revisions	Rev Date
Drawn	PPU
Checked	RBI

A-402

Upper Level - Class/Gym

General Enlarged Plan Notes

- All interior walls to be type "B1" UNO
- All furniture shown in plan is NIC.
- All flooring is to extend underneath casework.
- All door frames in masonry wall to be located 8" off perpendicular wall (typ.) unless indicated otherwise. All door frames in metal stud walls to be located 4" off perpendicular walls (typ.) unless indicated otherwise. Provide min. clear of 12" on push side of door and 18" on pull side.
- Reference building elevations (A-200 Sheets) for exterior control joint locations.
- All DS tie into boot and underground water line unless otherwise noted, see Civil.
- See AG series sheets for floor finish patterns.
- All CMU wall corners & window sills to have 1" diameter radius. Bottom course of CMU corners are not to be radiused to receive finish base as scheduled.
- All backsides of bathroom partition doors and single unit restroom doors to have a Coat Hook (CH) installed.
- All dimensions are to interior finish face U.N.O.



1 Floor Plan - Upper Level
1/8" = 1'-0"

10/5/2022 9:37:46 AM C:\Users\pmpur\Documents\22034 Northwest Middle_paulpurses\220HY.rvt

Magnolia Middle School

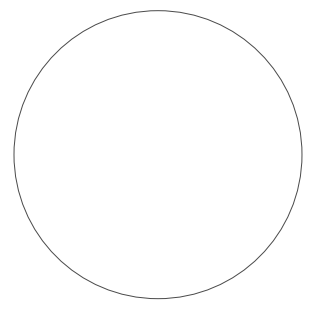
Architects

One Jackson Place 250
188 East Capitol Street
Jackson, MS 39201
p 601.352.5411

201 Park Court Suite B
Ridgeland, MS 39157
p 601.790.9432

161 Lameuse St. Suite 201
Biloxi, MS 39530
p 228.374.1409

dalebaileyplans.com



Car Drop Off & Gym Entry



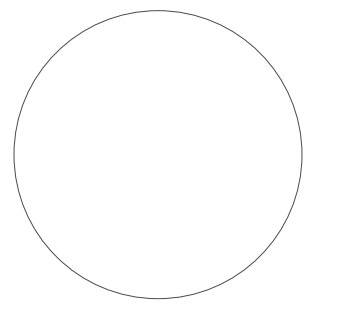
Meridian School District Bond Issue
Magnolia Middle: 24th Street, Meridian, MS 39301

Schematic
Design

Project No	21097
Date	May 20, 2022
Revisions	Rev Date
Drawn	PPU
Checked	RBI

G-000

General Sheet



Meridian School District Bond Issue

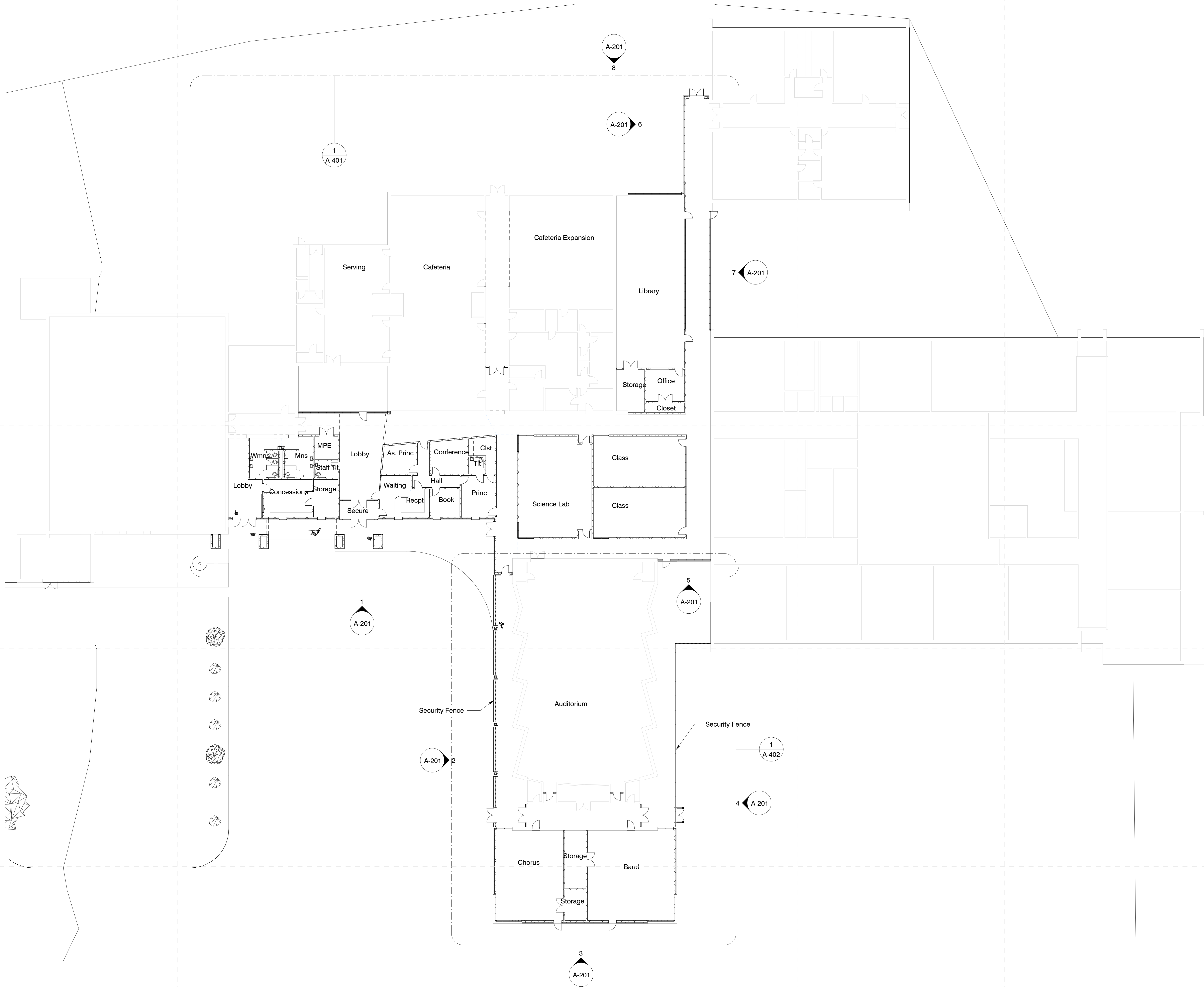
Magnolia Middle: 24th Street, Meridian, MS 39301

Schematic
Design

Project No	21097
Date	May 20, 2022
Revisions	Rev Date
Drawn	PPU
Checked	RBI

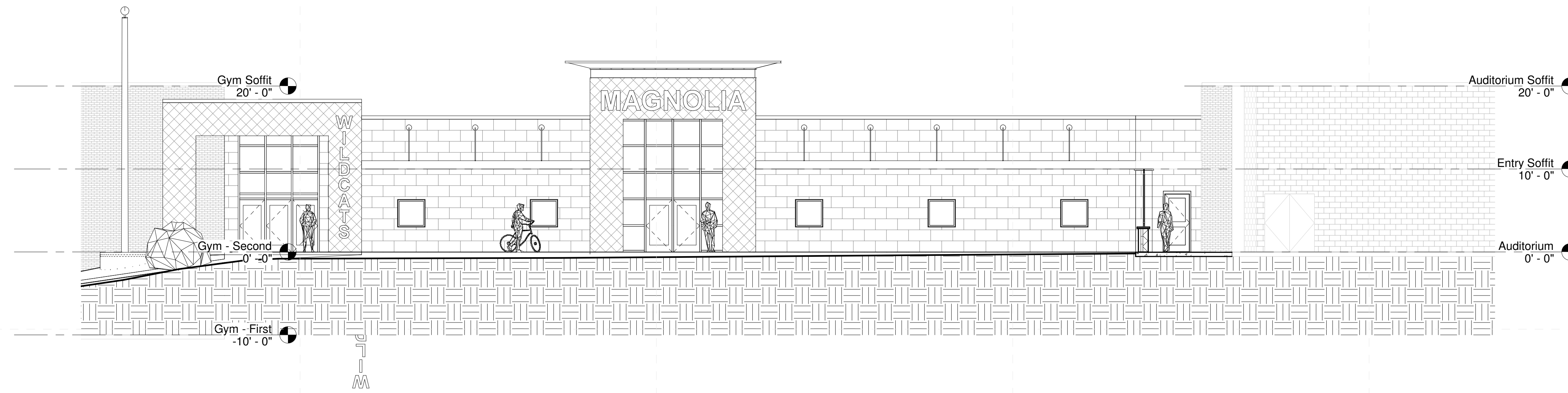
A-101

Composite Floor Plan

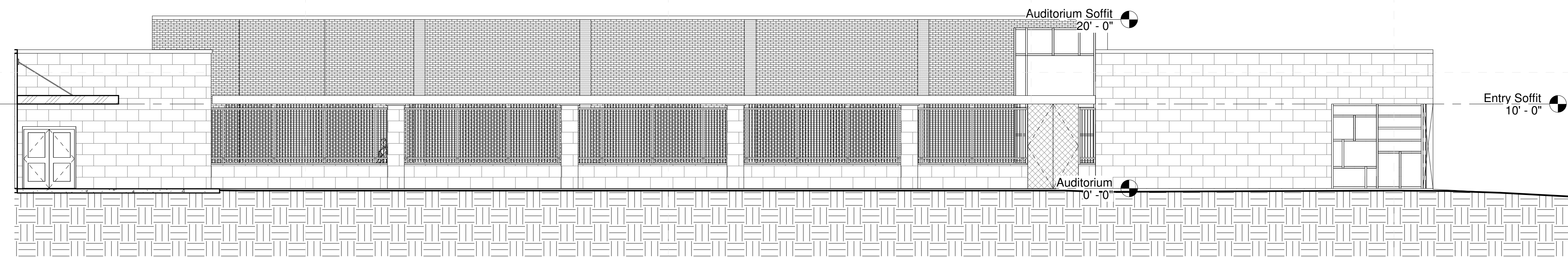


1 Composite Floor Plan - New
1/16" = 1'-0"

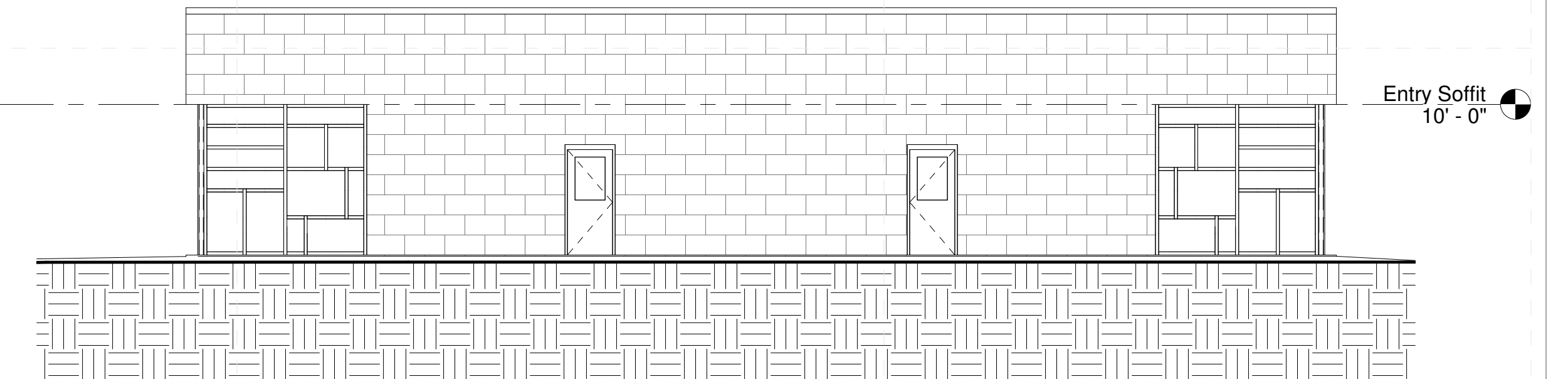
10/6/2022 11:37:08 AM C:\Users\pmpur\Documents\22034 Magnolia Middle_paulpurser\220HY.rvt



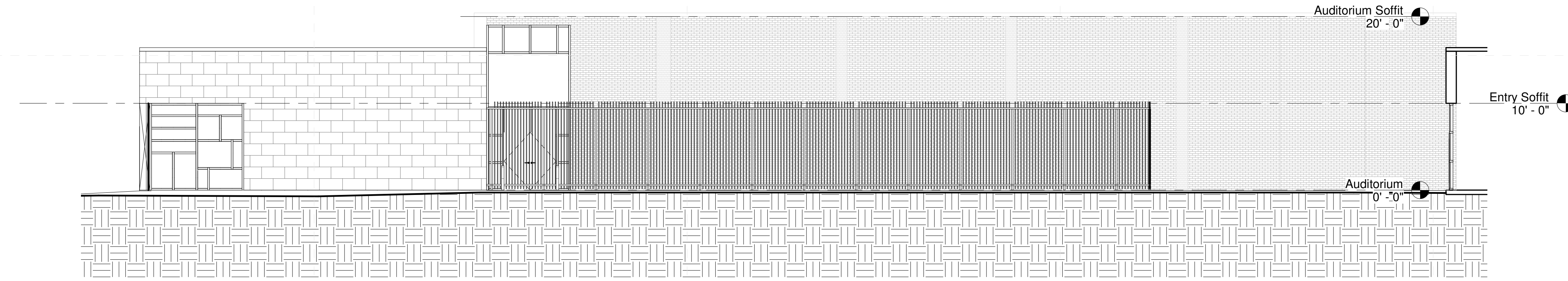
1 Elevations - South Entry
1/8" = 1'-0"



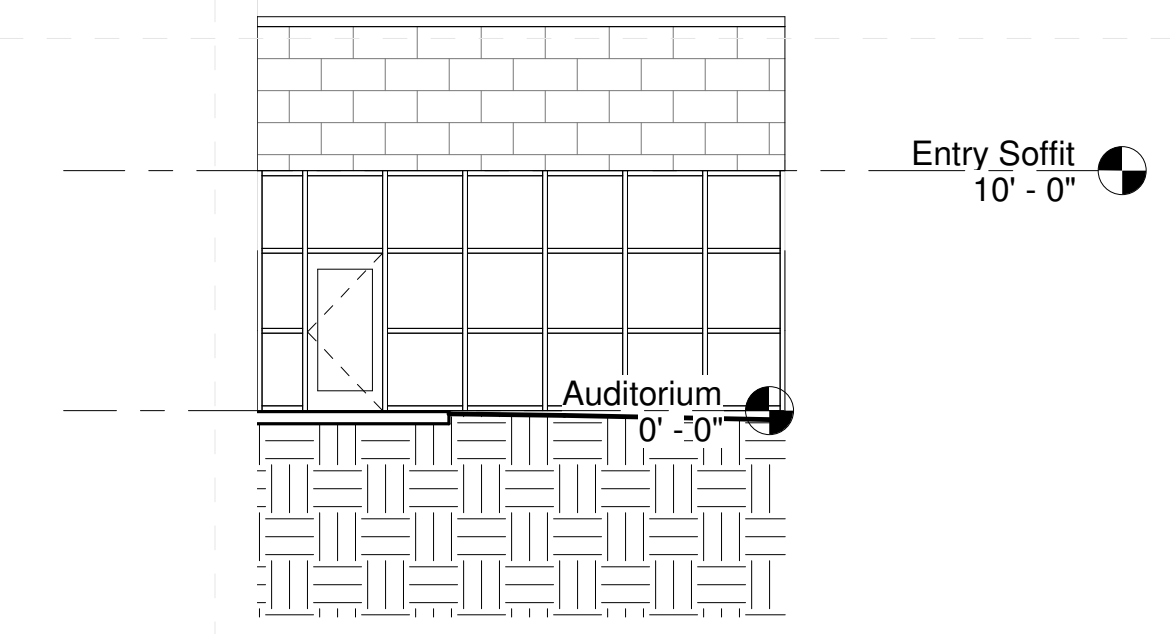
2 Elevations - Auditorium - W
1/8" = 1'-0"



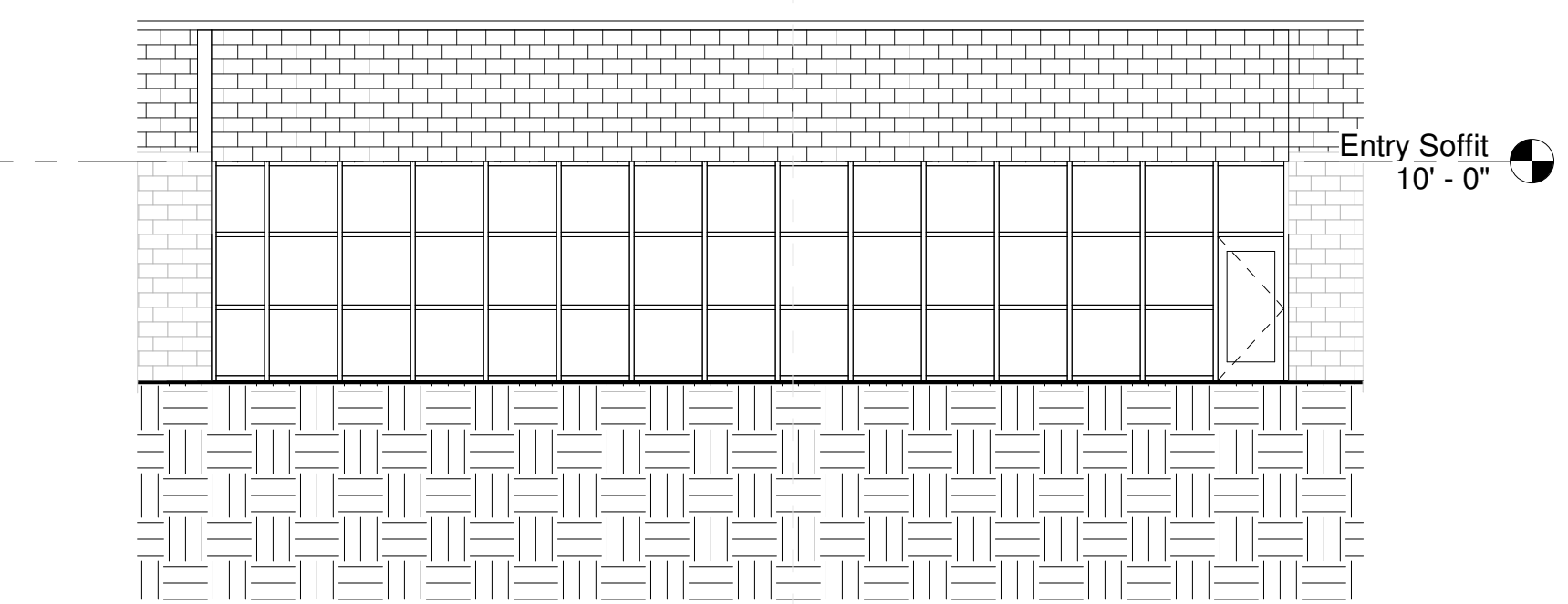
3 Elevations - Auditorium - S
1/8" = 1'-0"



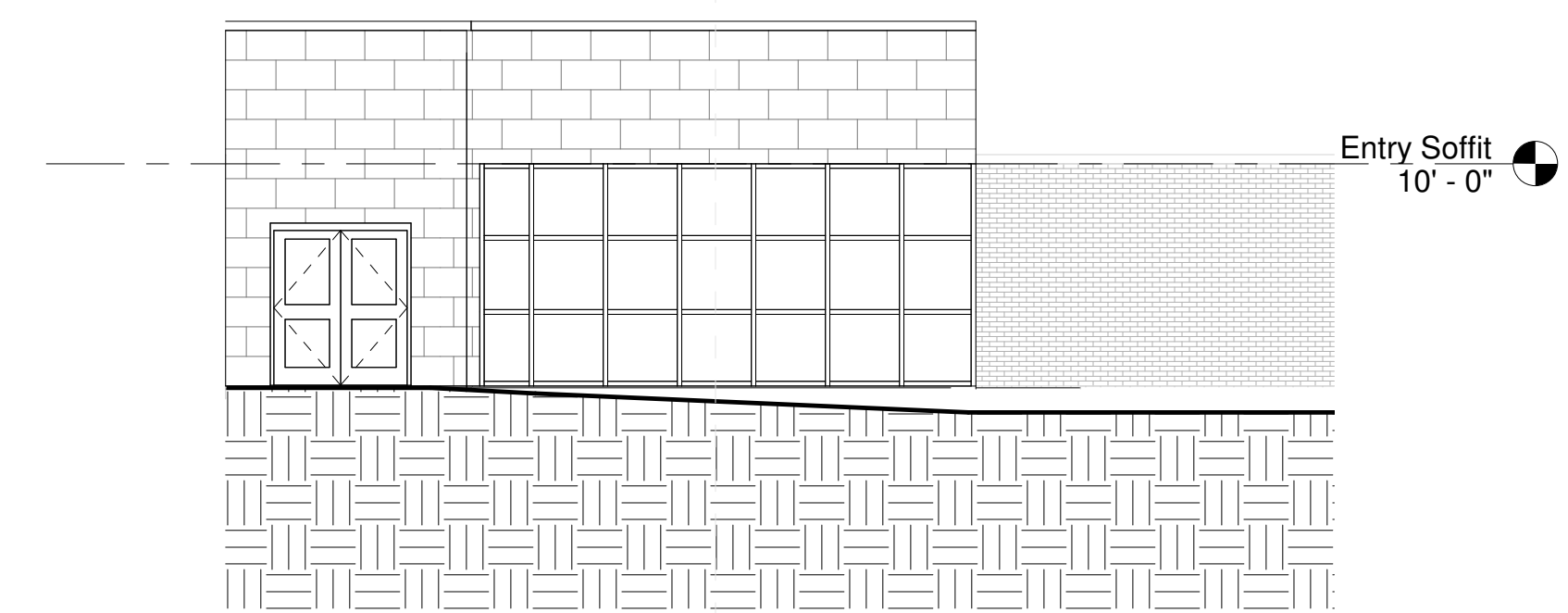
4 Elevations - Auditorium - E
1/8" = 1'-0"



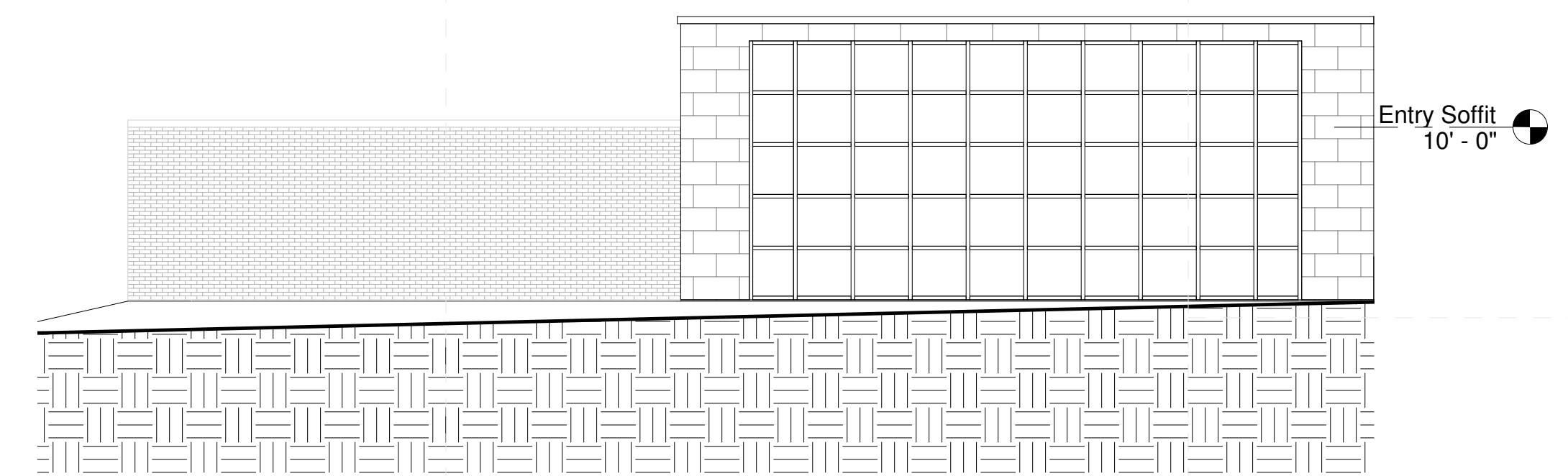
5 Elevations - Connector Hall - S
1/8" = 1'-0"



7 Elevations - Connector Hall - E
1/8" = 1'-0"



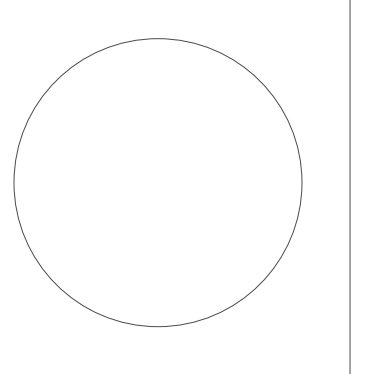
8 Elevations - North Library
1/8" = 1'-0"



6 Elevations - Connector Hall - W
1/8" = 1'-0"

General Elevation Notes

1. Brick Contraction Joints (CJ) in the veneer are to be located to the nearest veneer coursing. See structural drawings for contraction joint details and locations in CMU support wall.
2. Expansion Joint (EJ) and Contraction Joint material should match grout colors as selected by architect. Control Joints are required between brick and architectural precast concrete lintels and GFRC Cornice to accommodate expansion and contraction variations.
3. ALL downspouts to grade to have cast metal boots and be connected to sub-surface drainage system to drain water away from building. See Civil for drainage pipe location, routing and sizes. Downspouts that discharge onto lower roofs to have splashblocks to protect the roofing surface.



Project No	21097
Date	May 20, 2022
Revisions	Rev Date
Drawn	TBD
Checked	TBD

10/6/2022 11:37:11 AM C:\Users\jampur\Documents\22034 Magnolia Middle_paulpuser\2024HY.rvt

Room 219

General Enlarged Plan Notes

1. All interior walls to be type "B1" UNO
2. All furniture shown in plan is NIC.
3. All flooring is to extend underneath casework.
4. All door frames in masonry wall to be located 8" off perpendicular wall (typ.) unless indicated otherwise. All door frames in metal stud walls to be located 4" off perpendicular walls (typ.) unless indicated otherwise. Provide min. clear of 12" on push side of door and 18" on pull side.
5. Reference building elevations (A-200 Sheets) for exterior control joint locations.
6. All DS tie into boot and underground water line unless otherwise noted, see Civil.
7. See AG series sheets for floor finish patterns.
8. All CMU wall corners & window sills to have 1" diameter radius. Bottom course of CMU corners are not to be radiused to receive finish base as scheduled.
9. All backsides of bathroom partition doors and single unit restroom doors to have a Coat Hook (CH) installed.
10. All dimensions are to interior finish face U.N.O.

Architects
 One Jackson Place 250
 188 East Capitol Street
 Jackson, MS 39201
 p 601.352.5411

201 Park Court Suite B
 Ridgeland, MS 39157
 p 601.790.9432

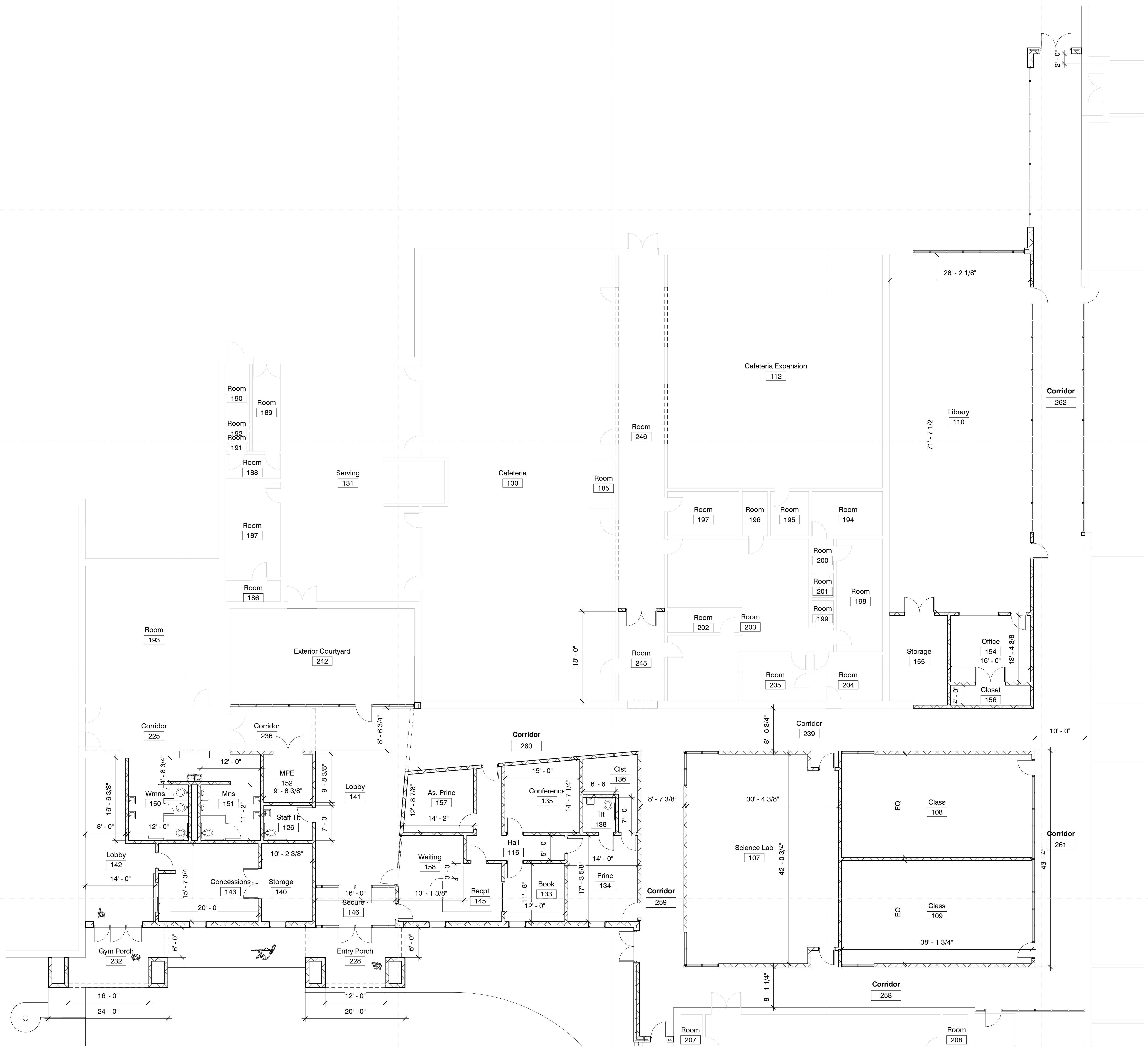
161 Lameuse St. Suite 201
 Biloxi, MS 39530
 p 228.374.1409

dalebaileyplans.com

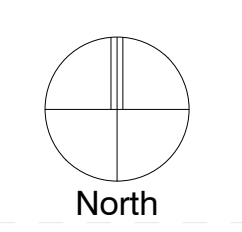
Meridian School District Bond Issue
 Magnolia Middle: 24th Street, Meridian, MS 39301

Schematic Design

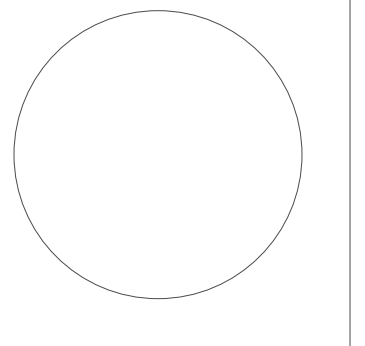
Project No	21097
Date	May 20, 2022
Revisions	Rev Date
Drawn	PPU
Checked	RBI



1 Floor Plan - Admin/Classrooms
 1/8" = 1'-0"



10/6/2022 11:37:13 AM
 C:\Users\jppur\Documents\22034 Magnolia Middle_paulpurses\2024HY.rvt



Meridian School District Bond Issue

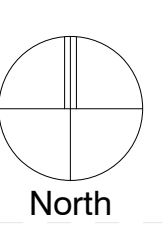
Magnolia Middle: 24th Street, Meridian, MS 39301

Schematic Design

Project No	21097
Date	May 20, 2022
Revisions	Rev Date
Drawn	PPu
Checked	RBI

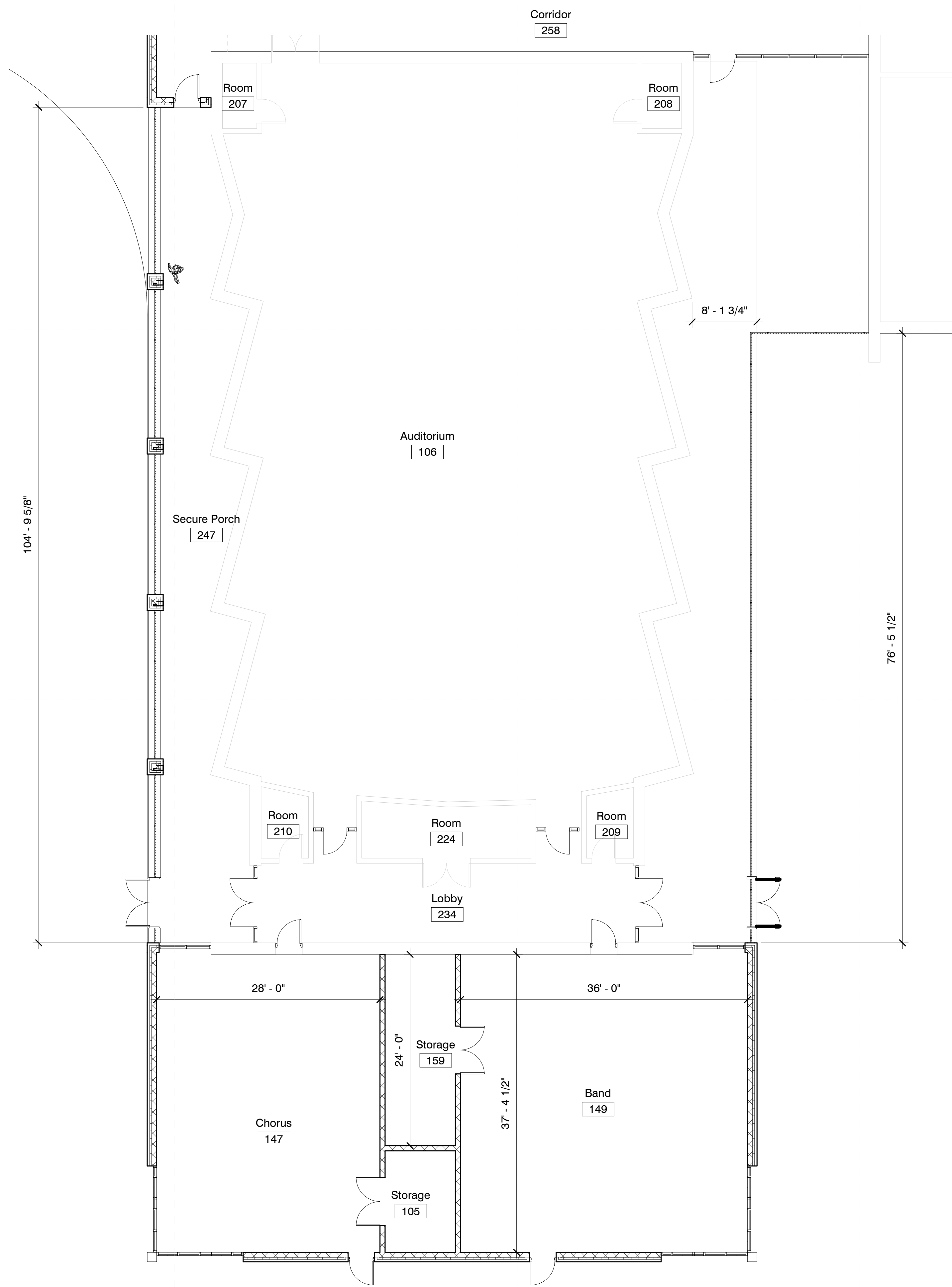
A-402

Enlarged Floor Plan - South



General Enlarged Plan Notes

- All interior walls to be type "B1" UNO
- All furniture shown in plan is NIC.
- All flooring is to extend underneath casework.
- All door frames in masonry wall to be located 8" off perpendicular wall (typ.) unless indicated otherwise. All door frames in metal stud walls to be located 4" off perpendicular walls (typ.) unless indicated otherwise. Provide min. clear of 12" on push side of door and 18" on pull side.
- Reference building elevations (A-200 Sheets) for exterior control joint locations.
- All DS tie into boot and underground water line unless otherwise noted, see Civil.
- See AG series sheets for floor finish patterns.
- All CMU wall corners & window sills to have 1" diameter radius. Bottom course of CMU corners are not to be radiused to receive finish base as scheduled.
- All backsides of bathroom partition doors and single unit restroom doors to have a Coat Hook (CH) installed.
- All dimensions are to interior finish face U.N.O.



1 Floor Plan - Band/Chorus
1/8" = 1'-0"