

# DALE | BAILEY

J a c k s o n • B i l o x i

AN ASSOCIATION

M i s s i s s i p p i



## Meridian School District Bond Issue



**Meridian SR High School: 32nd  
Street, Meridian, MS 39305  
DPA PN: 22034**

**Schematic Design  
November 8, 2022**

**Superintendent** Dr. Amy Carter

### Board of Education

Board President	Mrs. Sally Gray
Board Vice-President	Mrs. Beverly Pennington
Secretary	Mr. Ron Turner, Sr.
Board Member	Ms. Gwendolyn Hardaway

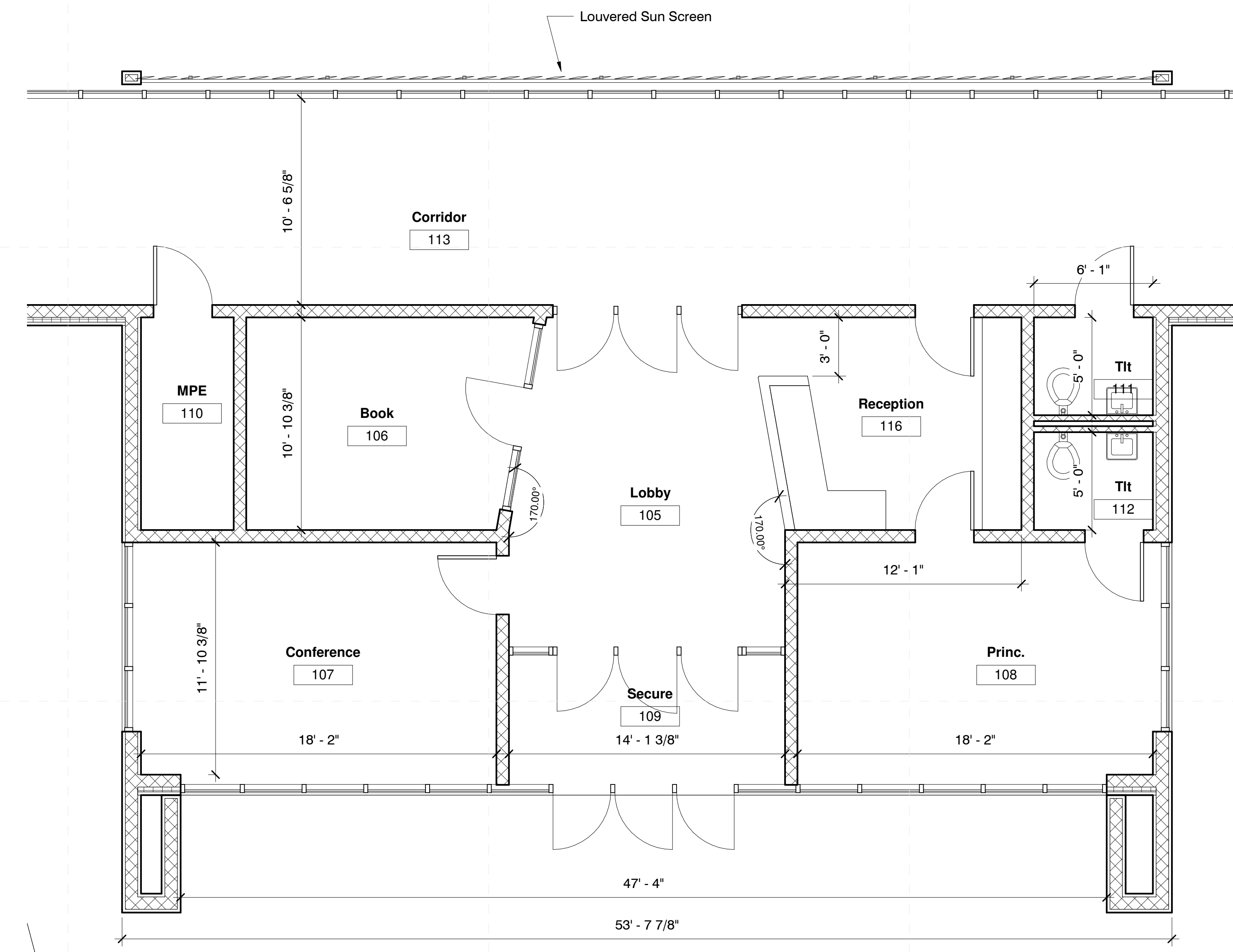
### Team

Owner Meridian Public School District

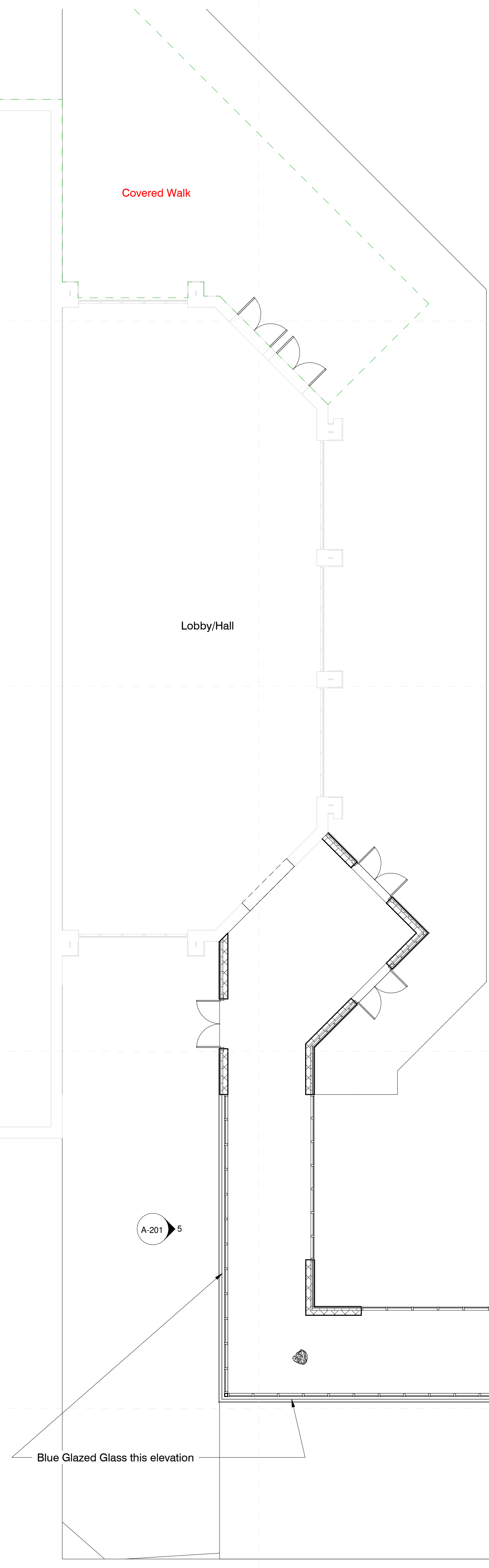
Architect	Dale Bailey, an association
Structural	Structural Design Group
Mechanical	GSK Mechanical, Inc.
Electrical	The Power Source, PLLC
Civil	Carter Miller Sansing, Ltd.

**General Enlarged Plan Notes**

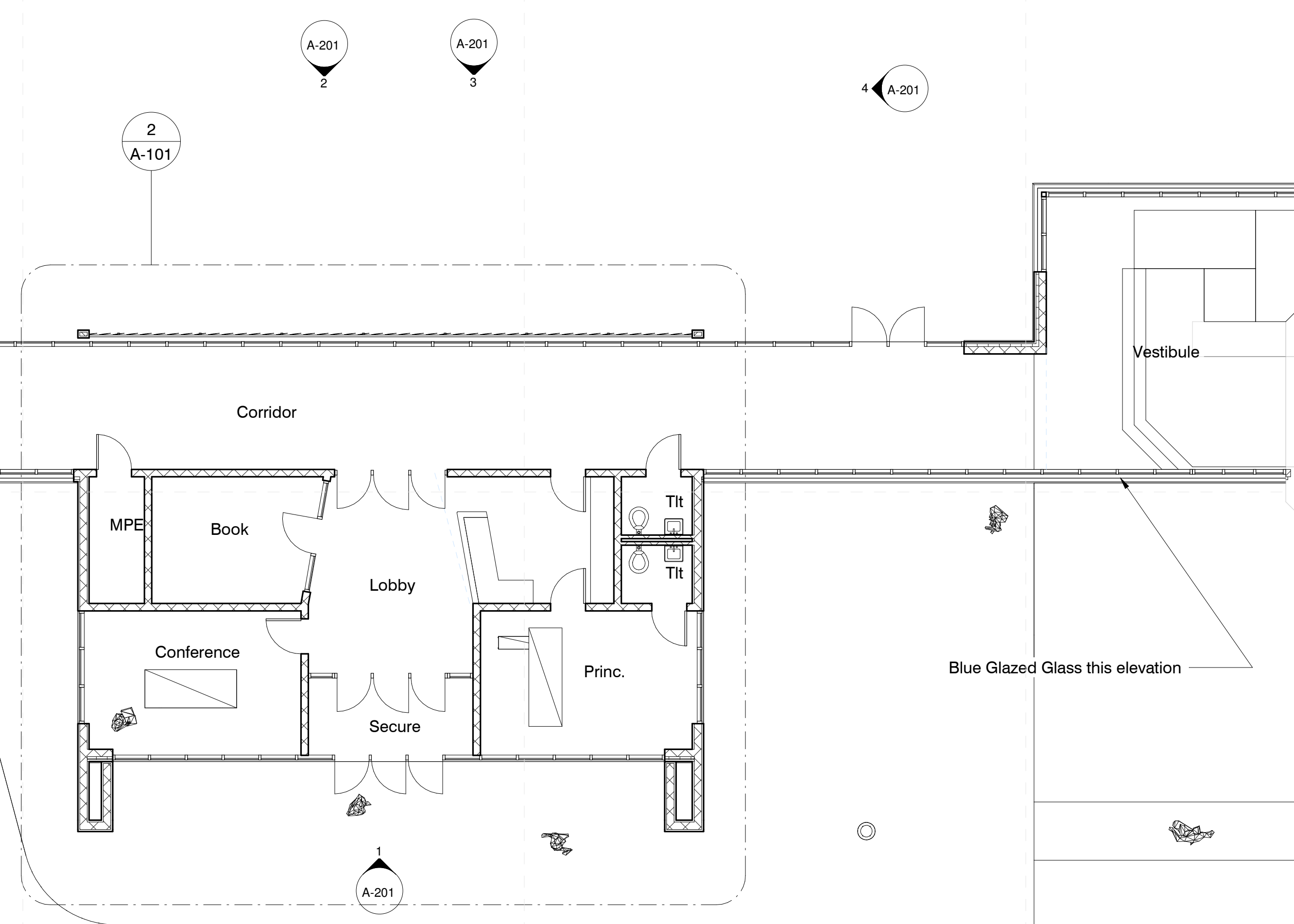
1. All interior walls to be type "B1" UNO
2. All furniture shown in plan is NIC.
3. All flooring is to extend underneath casework.
4. All door frames in masonry wall to be located 8" off perpendicular wall (typ.) unless indicated otherwise. All door frames in metal stud walls to be located 4" off perpendicular walls (typ.) unless indicated otherwise. Provide min. clear of 12" on push side of door and 18" on pull side.
5. Reference building elevations (A-200 Sheets) for exterior control joint locations.
6. All DS tie into boot and underground water line unless otherwise noted, see Civil.
7. See AG series sheets for floor finish patterns.
8. All CMU wall corners & window sills to have 1" diameter radius. Bottom course of CMU corners are not to be radiused to receive finish base as scheduled.
9. All backsides of bathroom partition doors and single unit restroom doors to have a Coat Hook (CH) installed.
10. All dimensions are to interior finish face U.N.O.



**2 Floor Plan - Admin**  
1/4" = 1'-0"



**1 Floor Plan**  
1/8" = 1'-0"



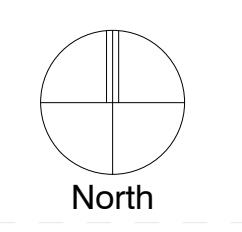
**Meridian School District Bond Issue**  
Meridian SR High School: 32nd Street, Meridian, MS 39305

**Schematic Design**

Project No	22034
Date	November 8, 2022
Revisions	Rev Date
Drawn	PPU
Checked	RBI

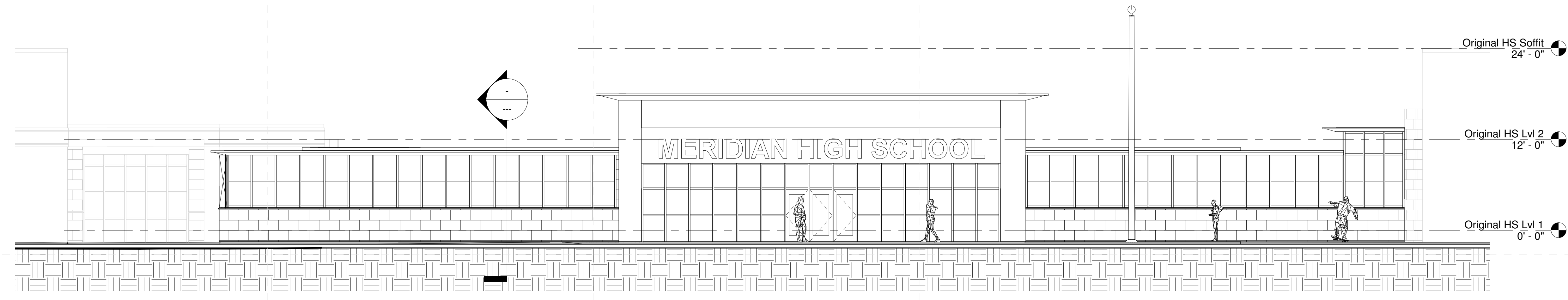
**A-101**

Composite Floor Plan

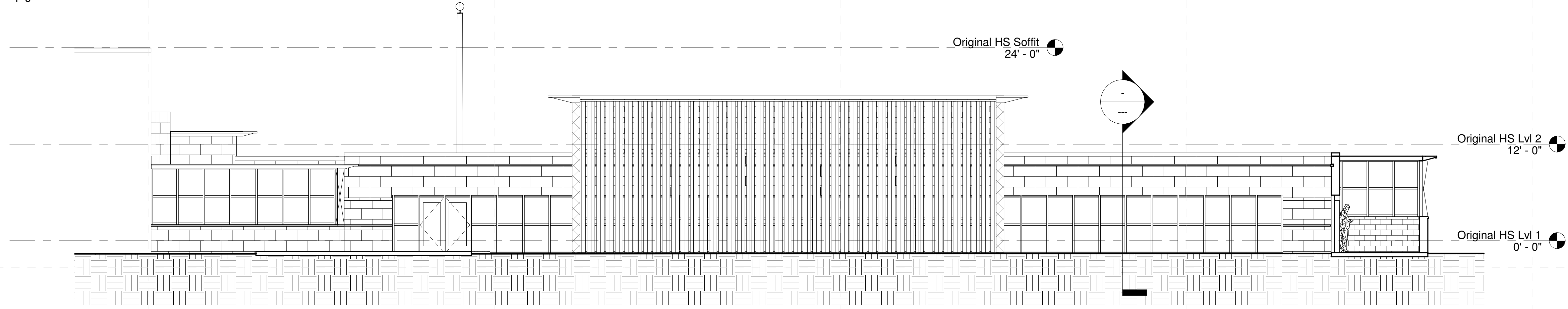


**General Elevation Notes**

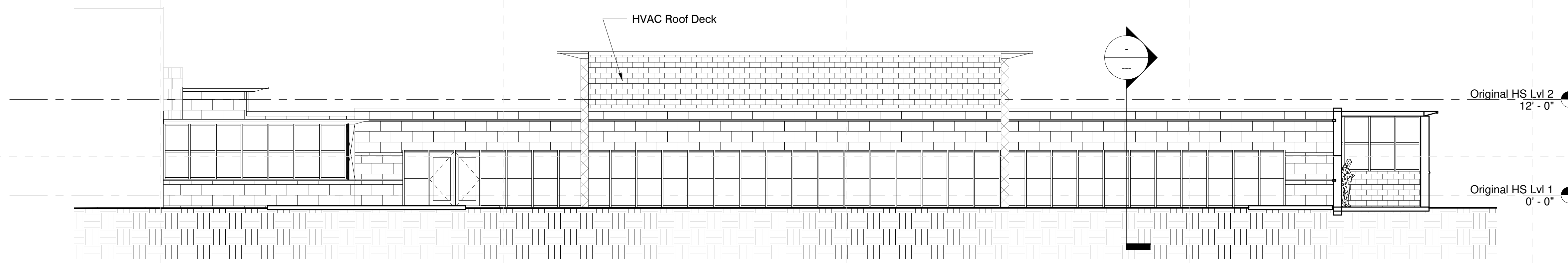
1. Brick Contraction Joints (CJ) in the veneer are to be located to the nearest veneer coursing. See structural drawings for contraction joint details and locations in CMU support wall.
2. Expansion Joint (EJ) and Contraction Joint material should match grout colors as selected by architect. Control Joints are required between brick and architectural precast concrete lintels and GFRC Cornice to accommodate expansion and contraction variations.
3. ALL downspouts to grade to have cast metal boots and be connected to sub-surface drainage system to drain water away from building. See Civil for drainage pipe location, routing and sizes. Downspouts that discharge onto lower roofs to have splashblocks to protect the roofing surface.



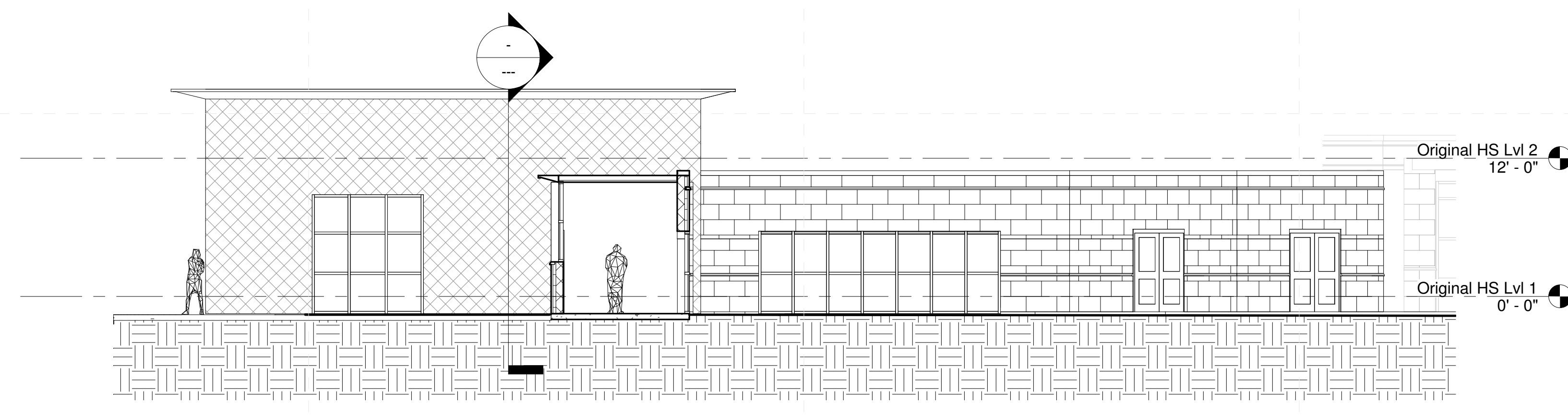
**1 Elevations - East**  
1/8" = 1'-0"



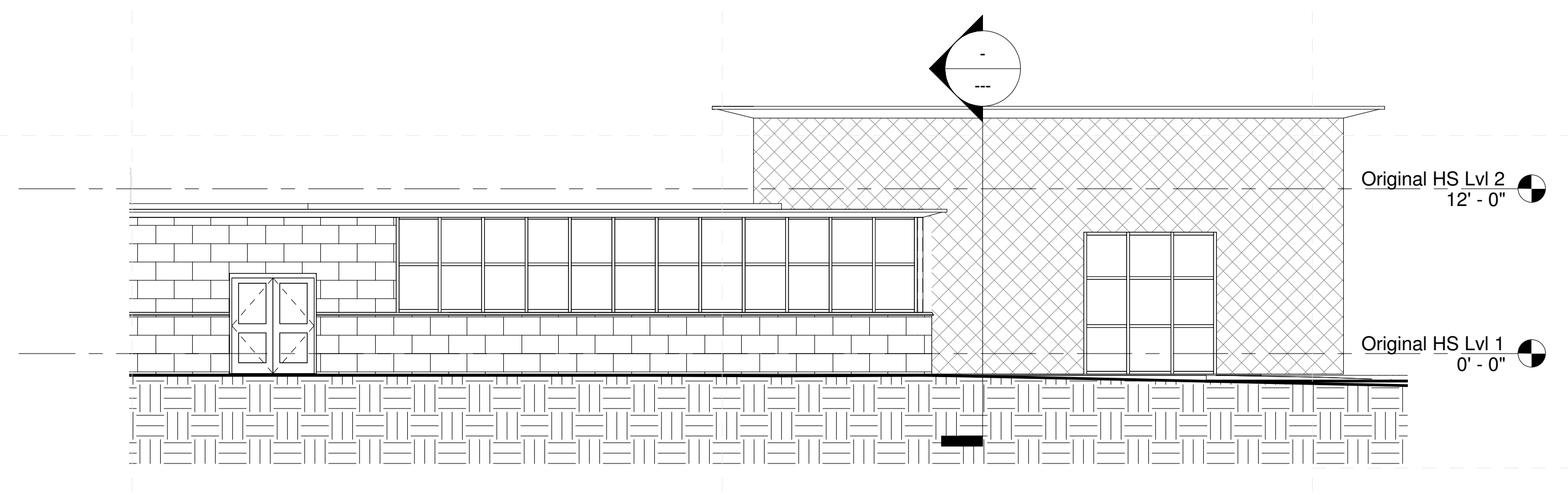
**2 Elevations - West**  
1/8" = 1'-0"



**3 Elevations - West without Screen**  
1/8" = 1'-0"



**4 Elevations - North**  
1/8" = 1'-0"



**5 Elevations - South**  
1/8" = 1'-0"

Project No	22034
Date	November 8, 2022
Revisions	Rev Date
Drawn	PPU
Checked	RBI