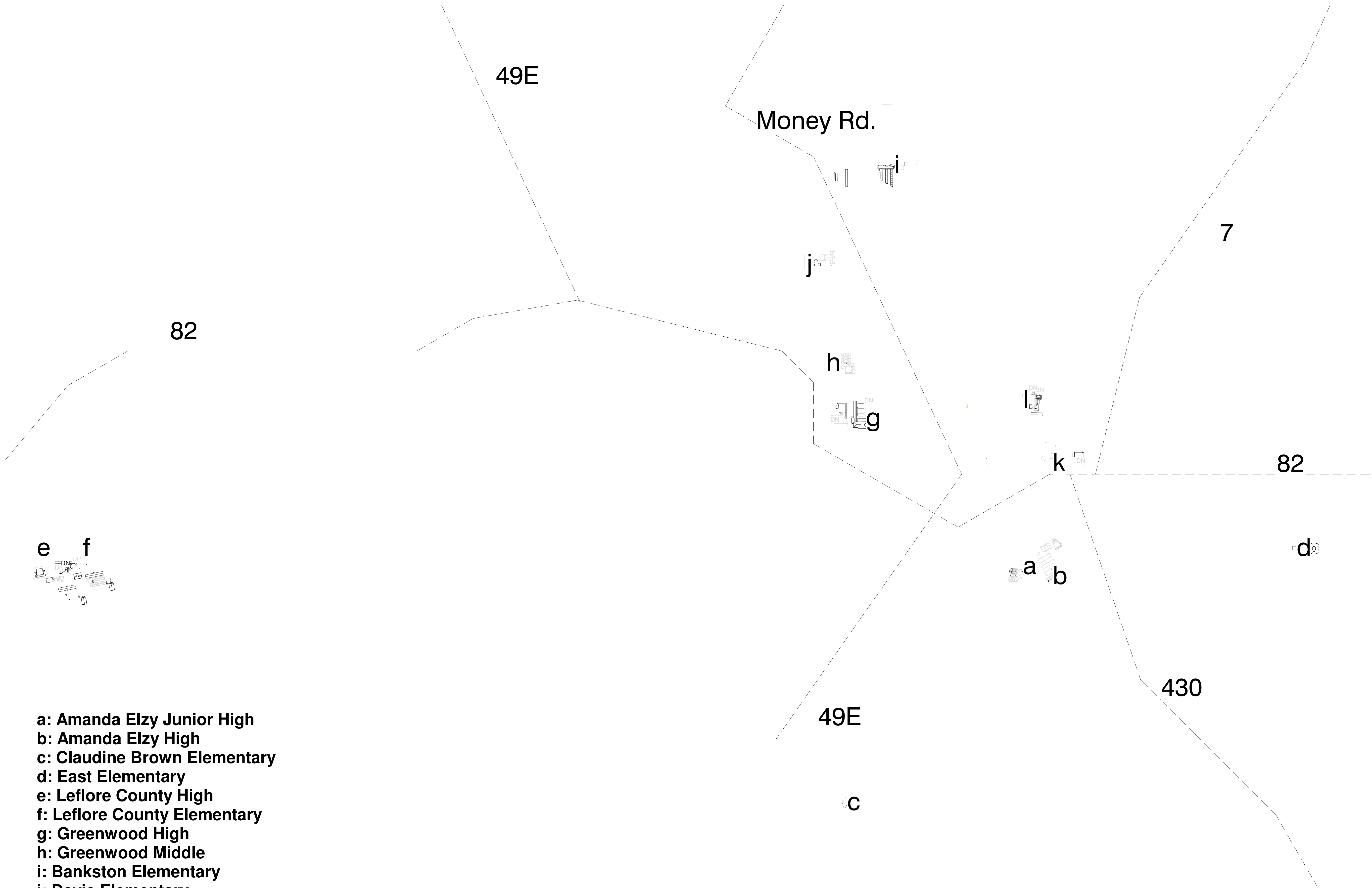


# DALE | BAILEY

J a c k s o n • B i l o x i

AN ASSOCIATION

M i s s i s s i p p i



- a: Amanda Elzy Junior High
- b: Amanda Elzy High
- c: Claudine Brown Elementary
- d: East Elementary
- e: Leflore County High
- f: Leflore County Elementary
- g: Greenwood High
- h: Greenwood Middle
- i: Bankston Elementary
- j: Davis Elementary
- k: Threadgill Elementary
- l: Threadgill Primary



## Greenwood Leflore Consolidated SD ESSER

1901 Hwy 82 West,  
Greenwood, MS 38930  
DBA PN: 21097  
Schematic Design

03/25/2022

**Superintendent** Dr. Mary Brown

**Board of Education**

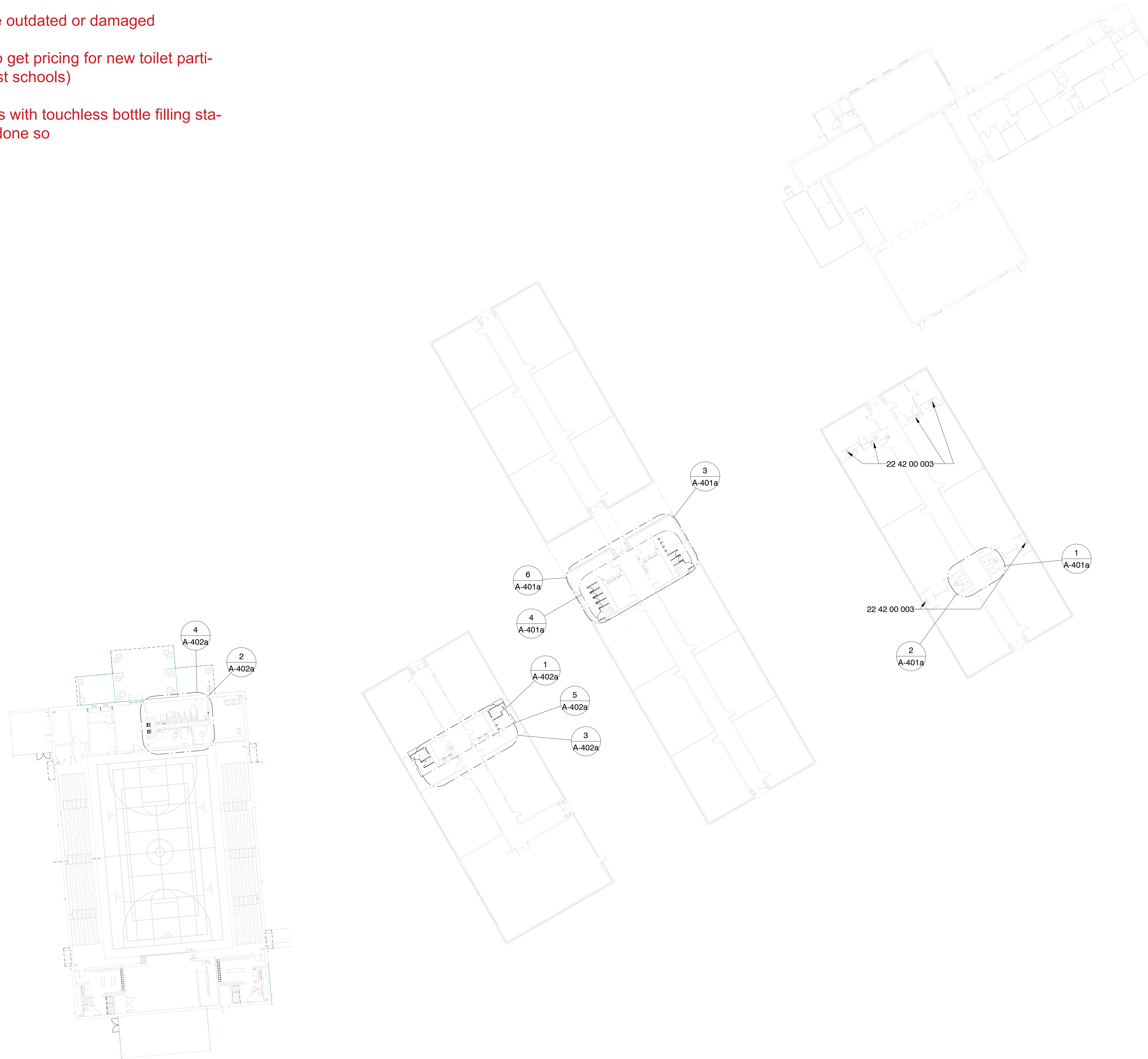
Board President	Mrs. Samantha Milton
Board Vice-President	Dr. Ro' Shaun Bailey
Secretary	Dr. Kalanya Moore
Board Member	Mrs. Jackie C. Lewis
Board Member	Ms. Magdalene Abraham

**Team**

Owner	Greenwood Leflore Consolidated School District
Architect	Dale Bailey, an association
Mechanical	GSK, Mechanical
Electrical	The Power Source

## Typical Work

- New Touchless faucets & flushvalves @ all plumbing fixtures everywhere
- Replace Fixtures where outdated or damaged
- Use alternate bidding to get pricing for new toilet partitions where needed (most schools)
- Replace water fountains with touchless bottle filling stations where not already done so



### Specific Notes

22 42 00 003 New touchless faucet at sink/cabinet; coordinate with mechanical

1 Composite Floor Plan  
3/64" = 1'-0"

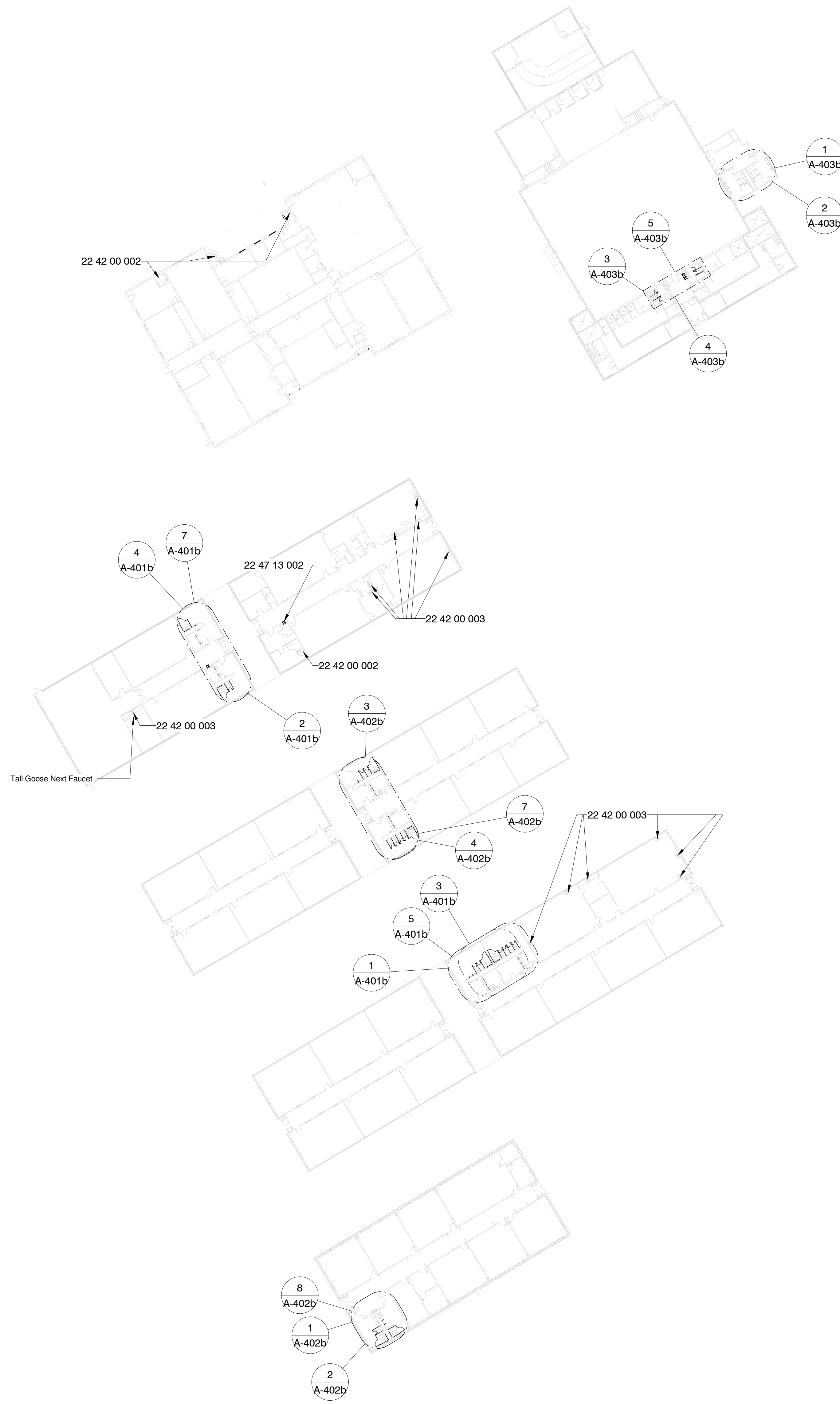


Schematic Design

Project No	21097
Date	25 March 2022
Revisions	Rev Date
Drawn	BJo
Checked	PPu

## Typical Work

- New Touchless faucets & flushvalves @ all plumbing fixtures everywhere
- Replace Fixtures where outdated or damaged
- Use alternate bidding to get pricing for new toilet partitions where needed (most schools)
- Replace water fountains with touchless bottle filling stations where not already done so



**1 Composite Floor Plan**  
1/32" = 1'-0"

### Specific Notes

- 22 42 00 002 New fixtures in this toilet room; coordinate with mechanical
- 22 42 00 003 New touchless faucet at sink/cabinet; coordinate with mechanical
- 22 47 13 002 Install single drinking fountain here with bottle filler attachment; coordinate with mechanical & electrical drawings

**Not For Construction**

**Greenwood Leflore Consolidated SD ESSER**  
Amanda Elzy High: 604 Elzy Ave., Greenwood, MS 38930

Schematic Design

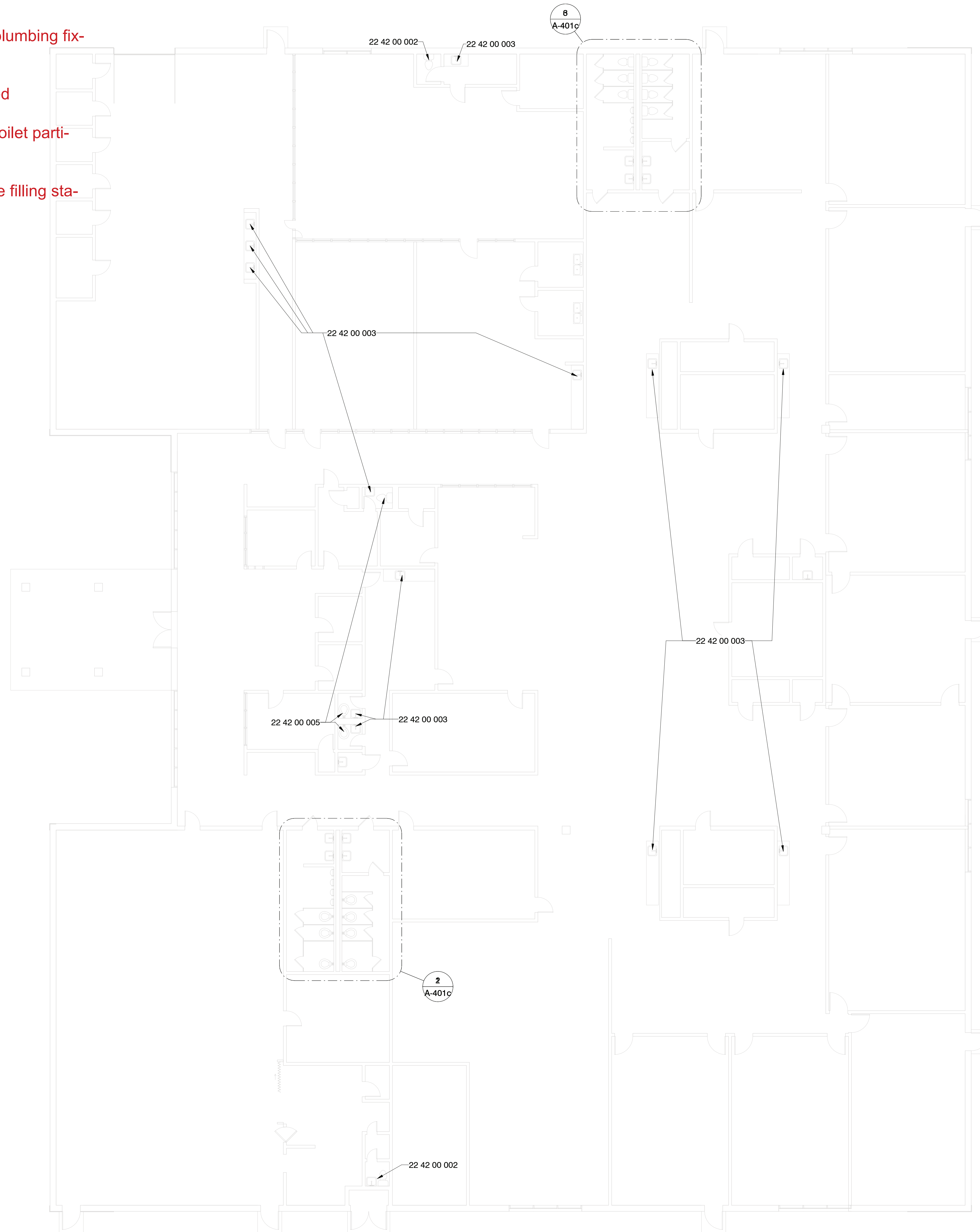
Project No	21097
Date	25 March 2022
Revisions	Rev Date
Drawn	BJo
Checked	PPu

**A-001b**

Amanda Elzy High School  
Composite Floor Plan

## Typical Work

- New Touchless faucets & flushvalves @ all plumbing fixtures everywhere
- Replace Fixtures where outdated or damaged
- Use alternate bidding to get pricing for new toilet partitions where needed (most schools)
- Replace water fountains with touchless bottle filling stations where not already done so

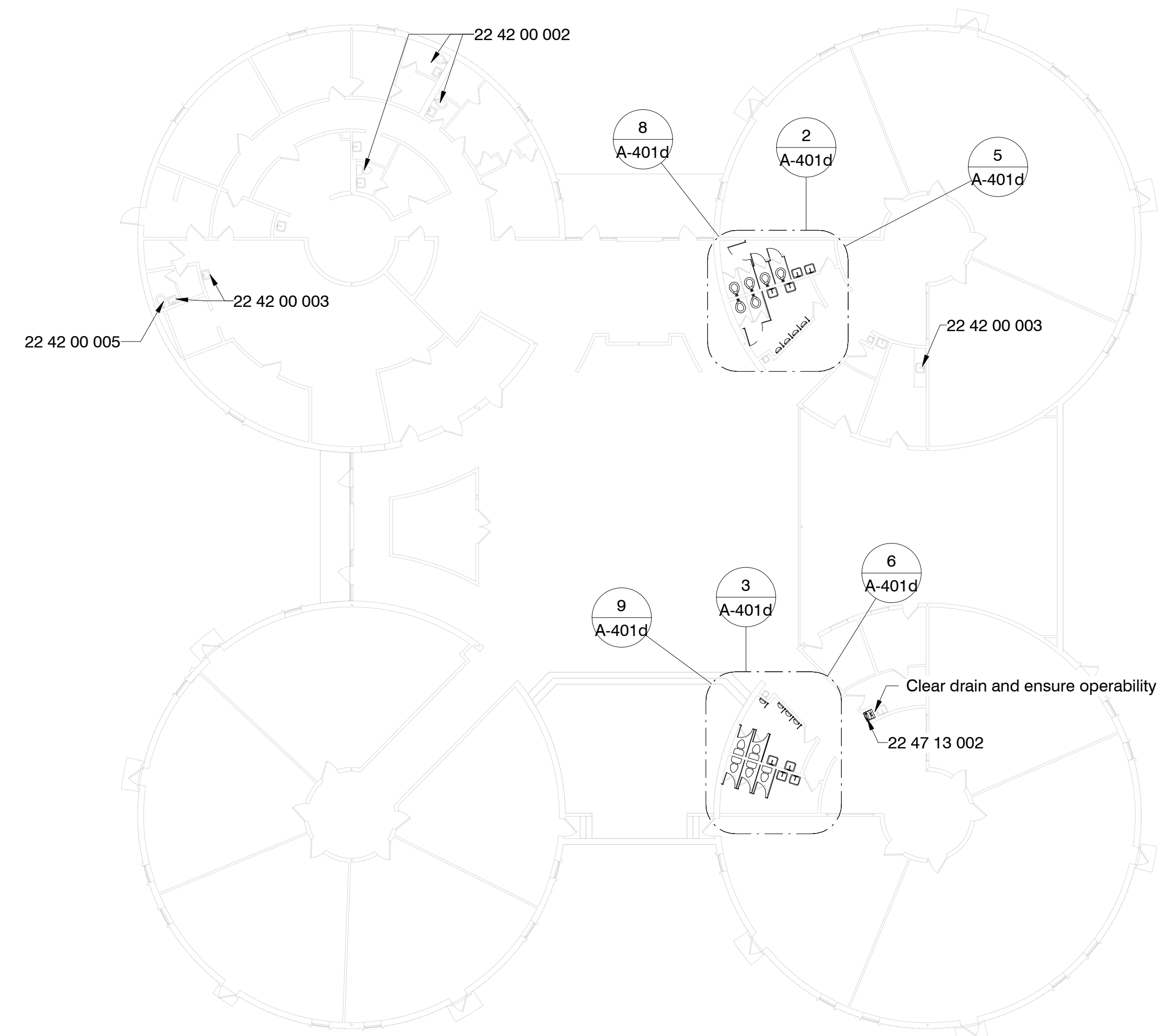
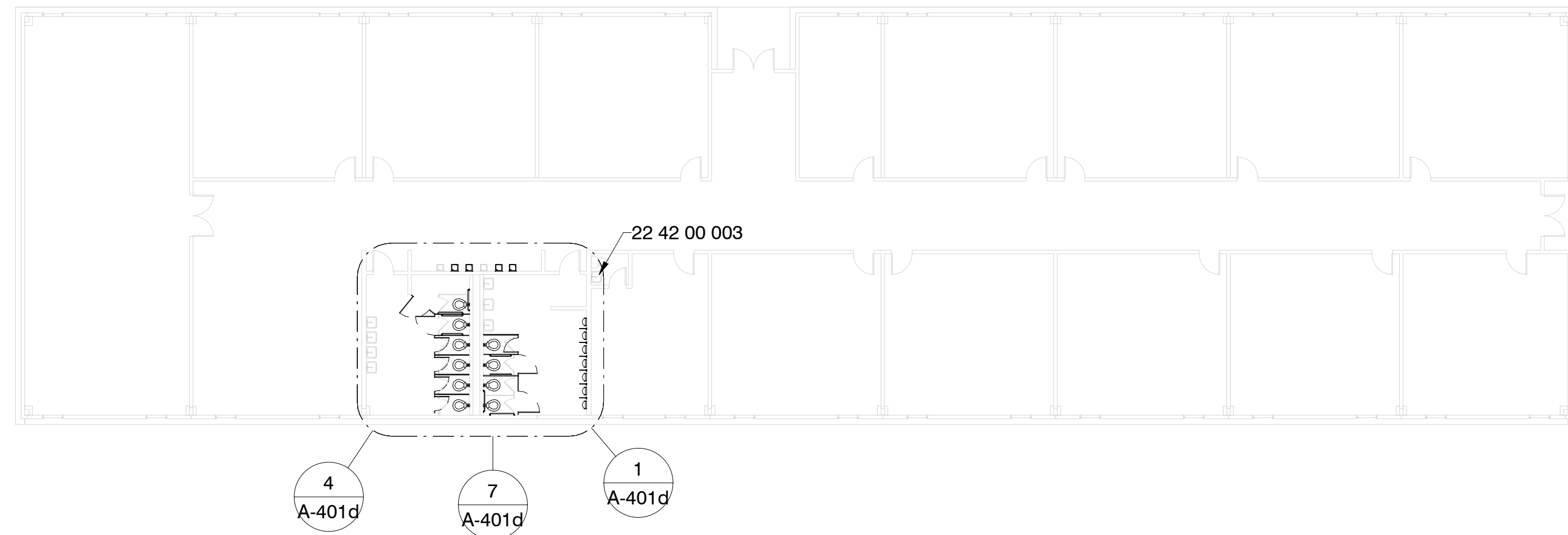


### Specific Notes

- 22 42 00 002 New fixtures in this toilet room; coordinate with mechanical
- 22 42 00 003 New touchless faucet at sink/cabinet; coordinate with mechanical
- 22 42 00 005 New touchless flushvalve @ fixture; coordinate with mechanical

## Typical Work

- New Touchless faucets & flushvalves @ all plumbing fixtures everywhere
- Replace Fixtures where outdated or damaged
- Use alternate bidding to get pricing for new toilet partitions where needed (most schools)
- Replace water fountains with touchless bottle filling stations where not already done so



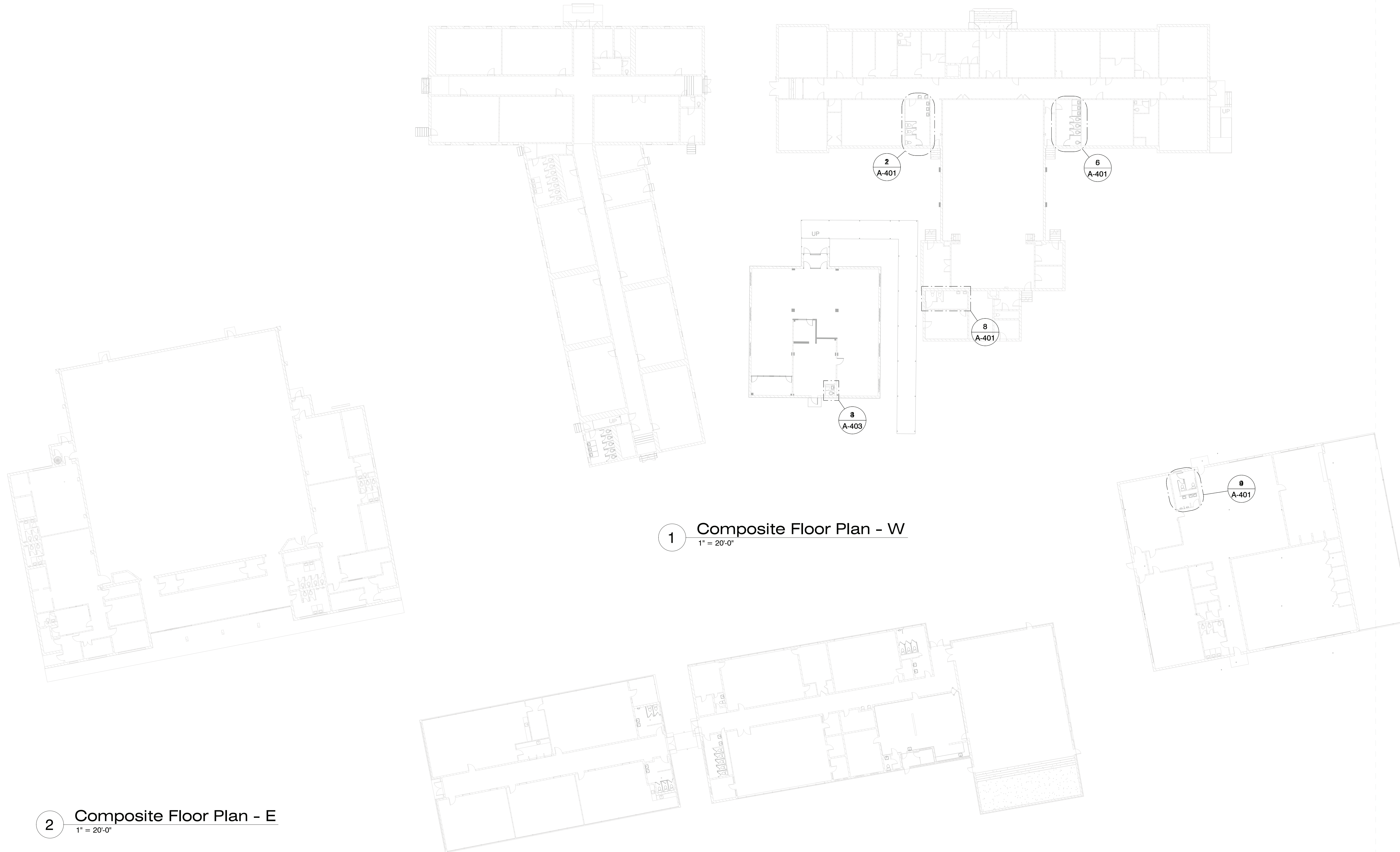
### Specific Notes

- 22 42 00 002 New fixtures in this toilet room; coordinate with mechanical
- 22 42 00 003 New touchless faucet at sink/cabinet; coordinate with mechanical
- 22 42 00 005 New touchless flushvalve @ fixture; coordinate with mechanical
- 22 47 13 002 Install single drinking fountain here with bottle filler attachment; coordinate with mechanical & electrical drawings

1 Composite Floor Plan  
1/16" = 1'-0"

## Typical Work

- New Touchless faucets & flushvalves @ all plumbing fixtures everywhere
- Replace Fixtures where outdated or damaged
- Use alternate bidding to get pricing for new toilet partitions where needed (most schools)
- Replace water fountains with touchless bottle filling stations where not already done so



3/24/2022 10:09:22 AM C:\Users\jppur\OneDrive\Documents\Leflore County Jr. High and High School\_paulpurses\20HY.rvt



Schematic Design

Project No	21097
Date	25 March 2022
Revisions	Rev Date
Drawn	BJo
Checked	PPu

**Not For  
Construction**

**Greenwood Leflore Consolidated SD ESSER**  
 Leflore County Elementary: 401 Lakeside St, Itta Bena, MS 38941

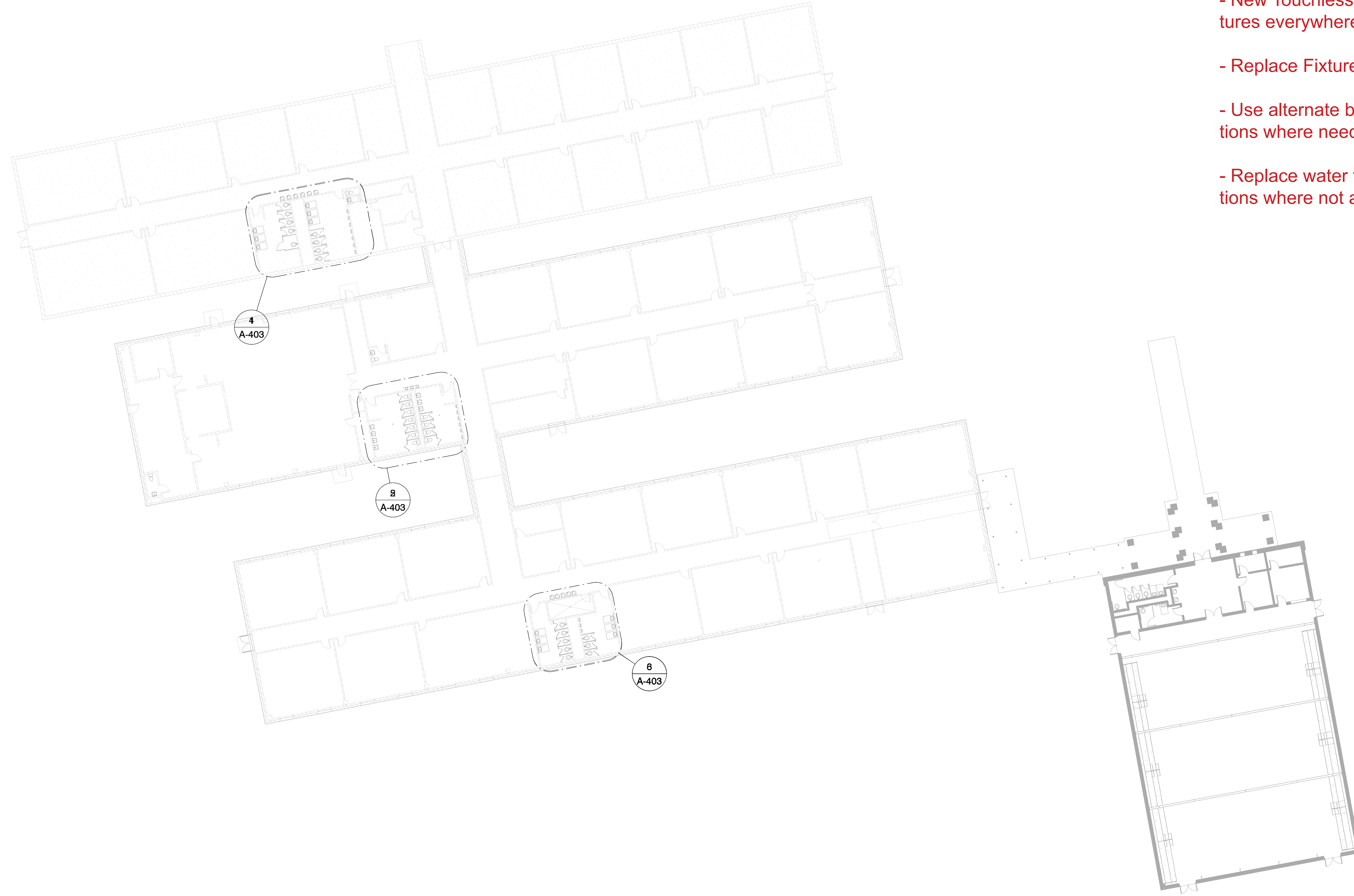
Schematic  
Design

Project No	21097
Date	25 March 2022
Revisions	Rev Date
Drawn	BJo
Checked	PPu

**A-001**  
 Leflore County Jr. High  
 and High School  
 Composite Floor Plan

Typical Work

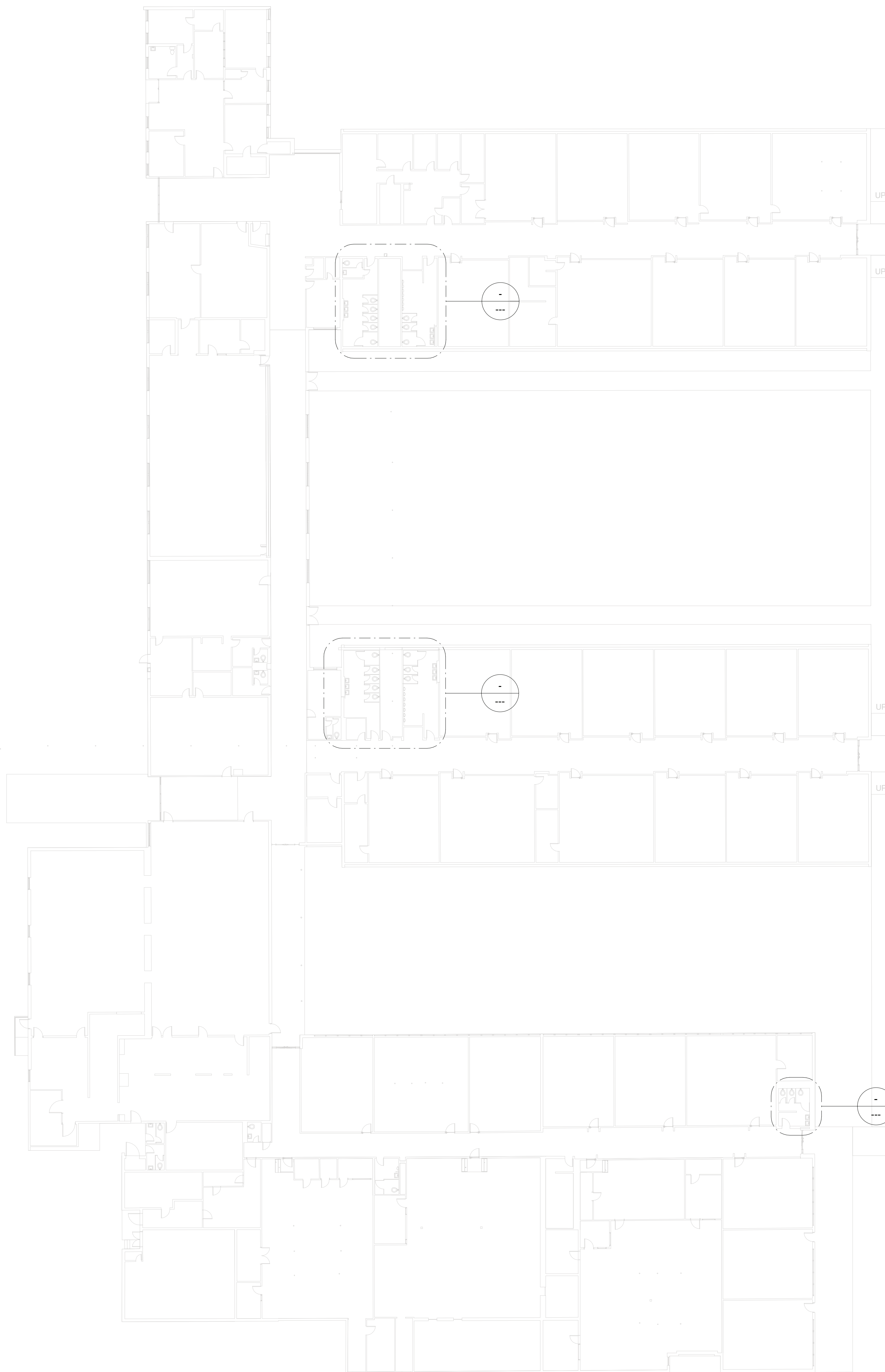
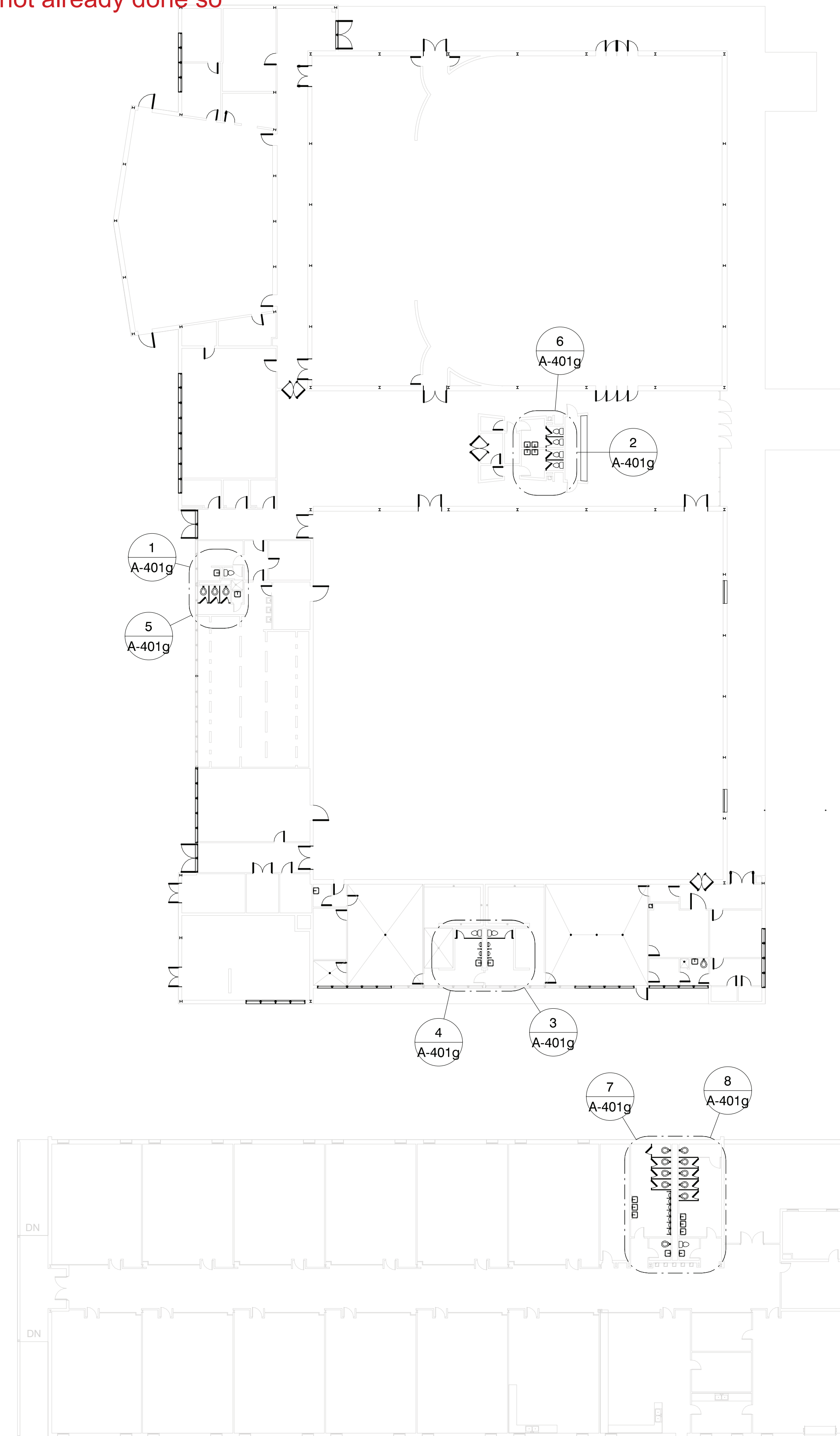
- New Touchless faucets & flushvalves @ all plumbing fixtures everywhere
- Replace Fixtures where outdated or damaged
- Use alternate bidding to get pricing for new toilet partitions where needed (most schools)
- Replace water fountains with touchless bottle filling stations where not already done so



**1 Composite Floor Plan**  
 1" = 20'-0"

## Typical Work

- New Touchless faucets & flushvalves @ all plumbing fixtures everywhere
- Replace Fixtures where outdated or damaged
- Use alternate bidding to get pricing for new toilet partitions where needed (most schools)
- Replace water fountains with touchless bottle filling stations where not already done so



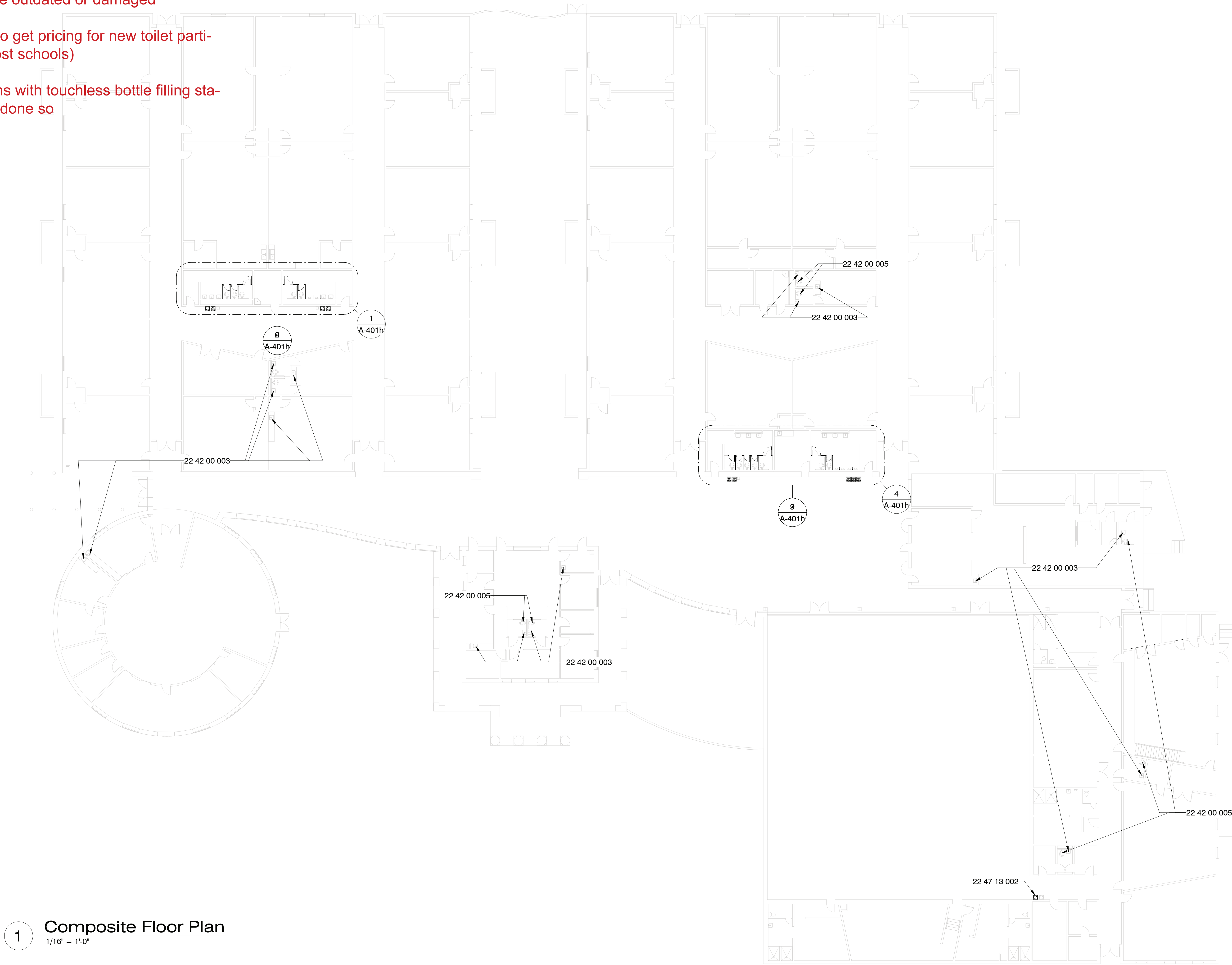
Specific Notes

1 Composite Floor Plan  
1" = 20'-0"



## Typical Work

- New Touchless faucets & flushvalves @ all plumbing fixtures everywhere
- Replace Fixtures where outdated or damaged
- Use alternate bidding to get pricing for new toilet partitions where needed (most schools)
- Replace water fountains with touchless bottle filling stations where not already done so



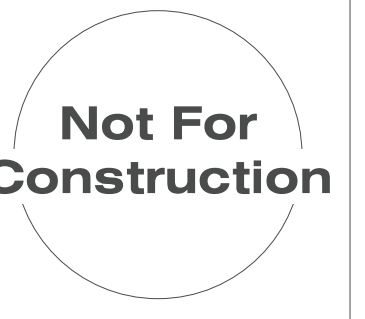
1 Composite Floor Plan  
1/16" = 1'-0"

### Specific Notes

- 22 42 00 003 New touchless faucet at sink/cabinet; coordinate with mechanical
- 22 42 00 005 New touchless flushvalve @ fixture; coordinate with mechanical
- 22 47 13 002 Install single drinking fountain here with bottle filler attachment; coordinate with mechanical & electrical drawings

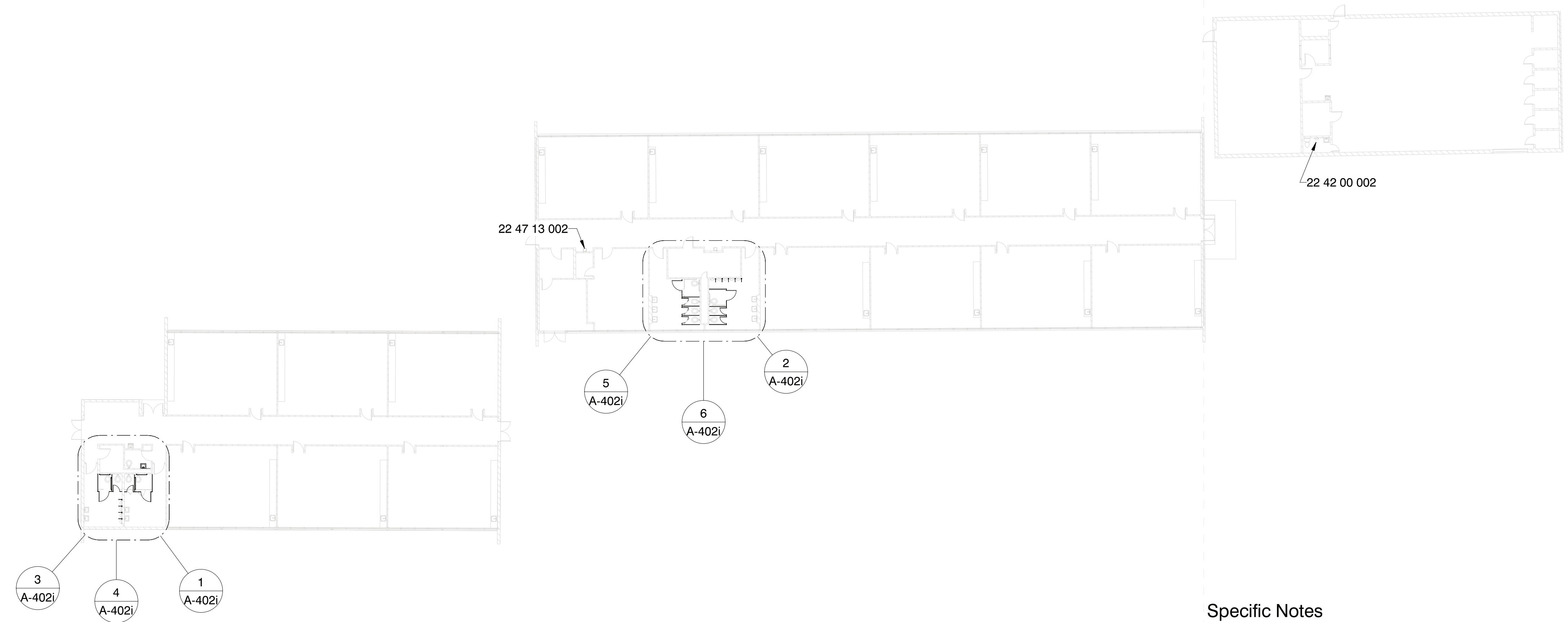
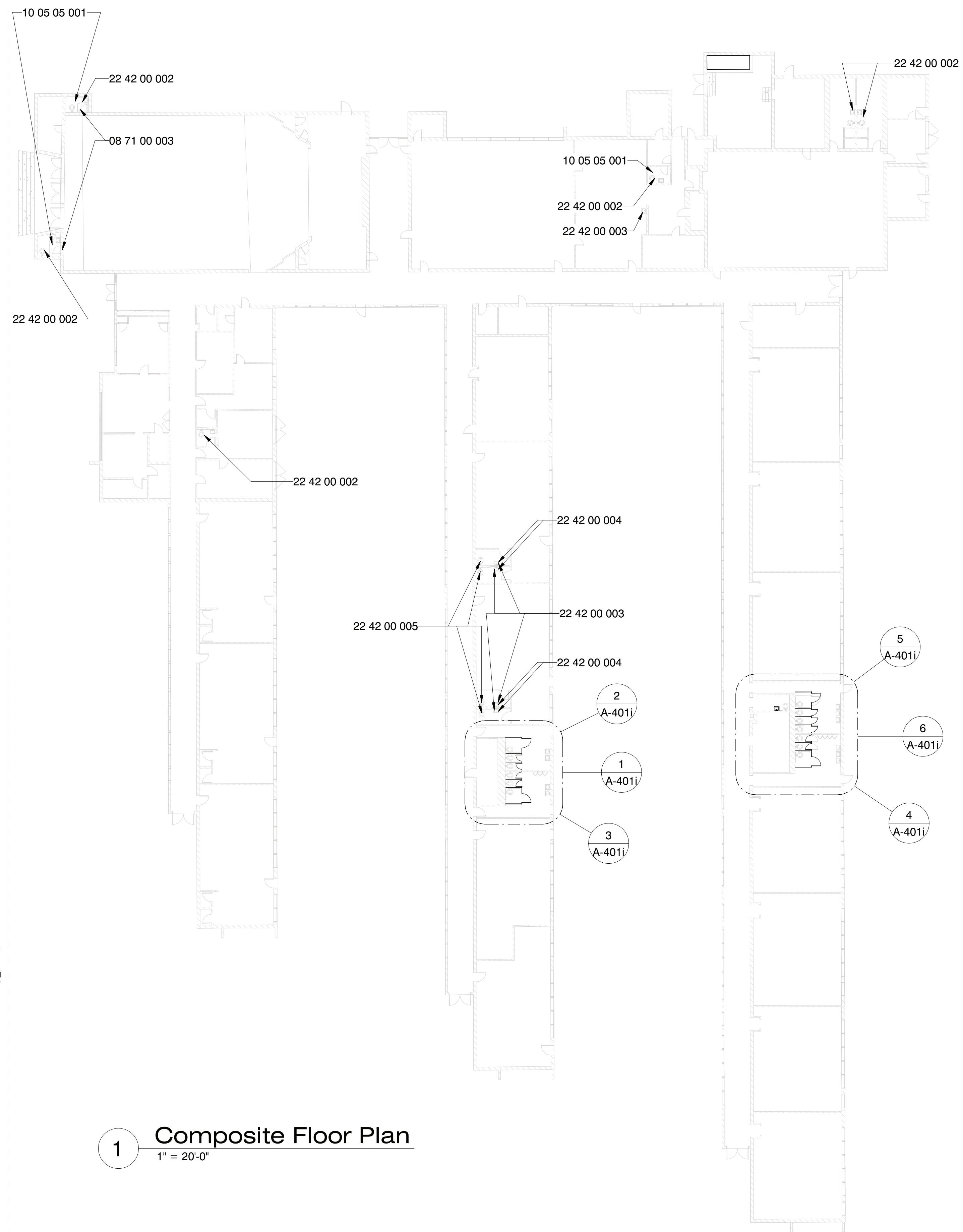
# Typical Work

- New Touchless faucets & flushvalves @ all plumbing fixtures everywhere
- Replace Fixtures where outdated or damaged
- Use alternate bidding to get pricing for new toilet partitions where needed (most schools)
- Replace water fountains with touchless bottle filling stations where not already done so



Schematic Design

Project No	21097
Date	25 March 2022
Revisions	Rev Date
Drawn	BJo
Checked	PPu

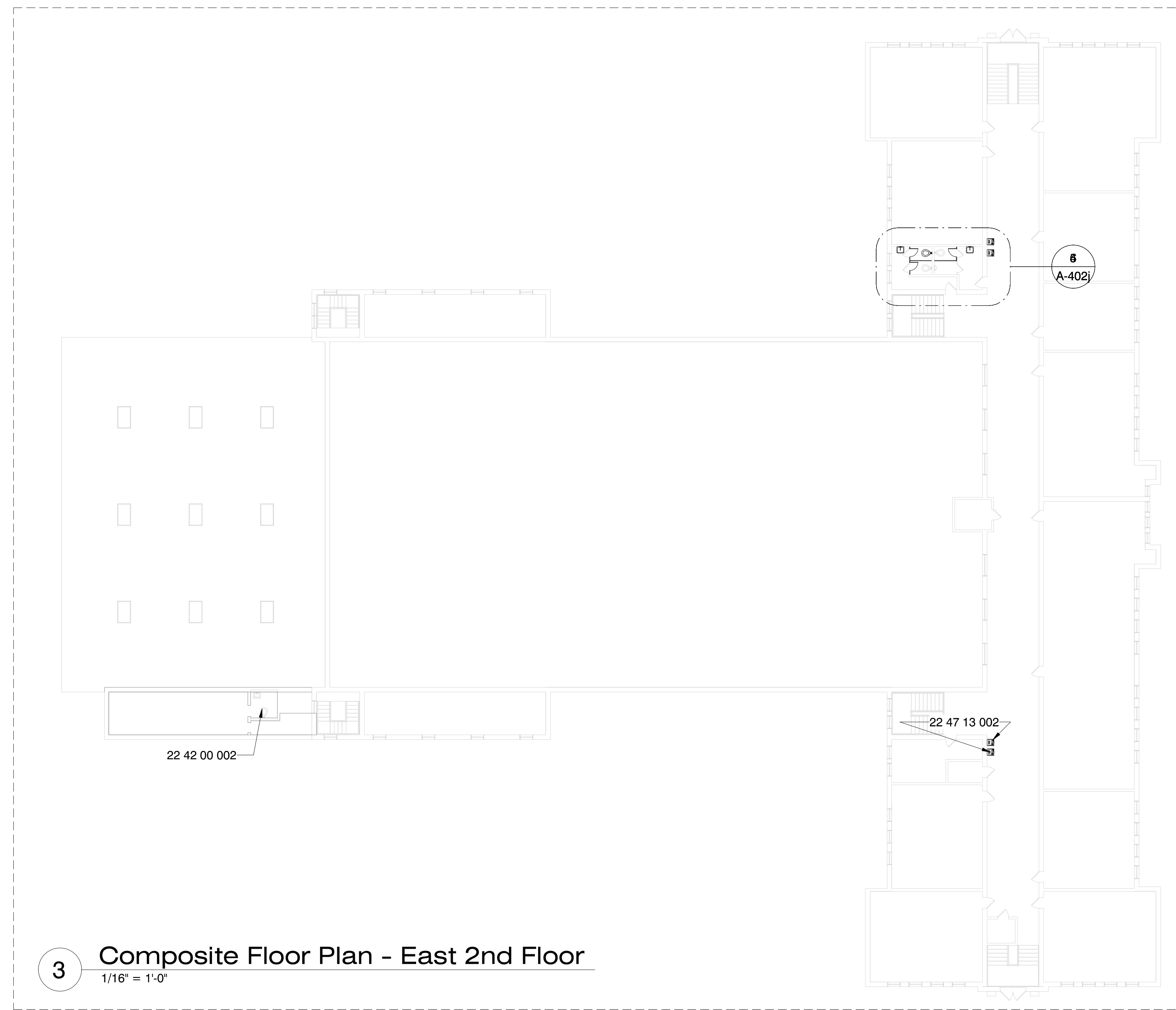


- Specific Notes**
- 08 71 00 003 Install surface mounted latch for privacy
  - 10 05 05 001 Remove toilet partitions entirely; patch any holes left by fasteners with color matching filler
  - 22 42 00 002 New fixtures in this toilet room; coordinate with mechanical
  - 22 42 00 003 New touchless faucet at sink/cabinet; coordinate with mechanical
  - 22 42 00 004 Install Pipe Guards; coordinate with mechanical
  - 22 42 00 005 New touchless flushvalve @ fixture; coordinate with mechanical
  - 22 47 13 002 Install single drinking fountain here with bottle filler attachment; coordinate with mechanical & electrical drawings

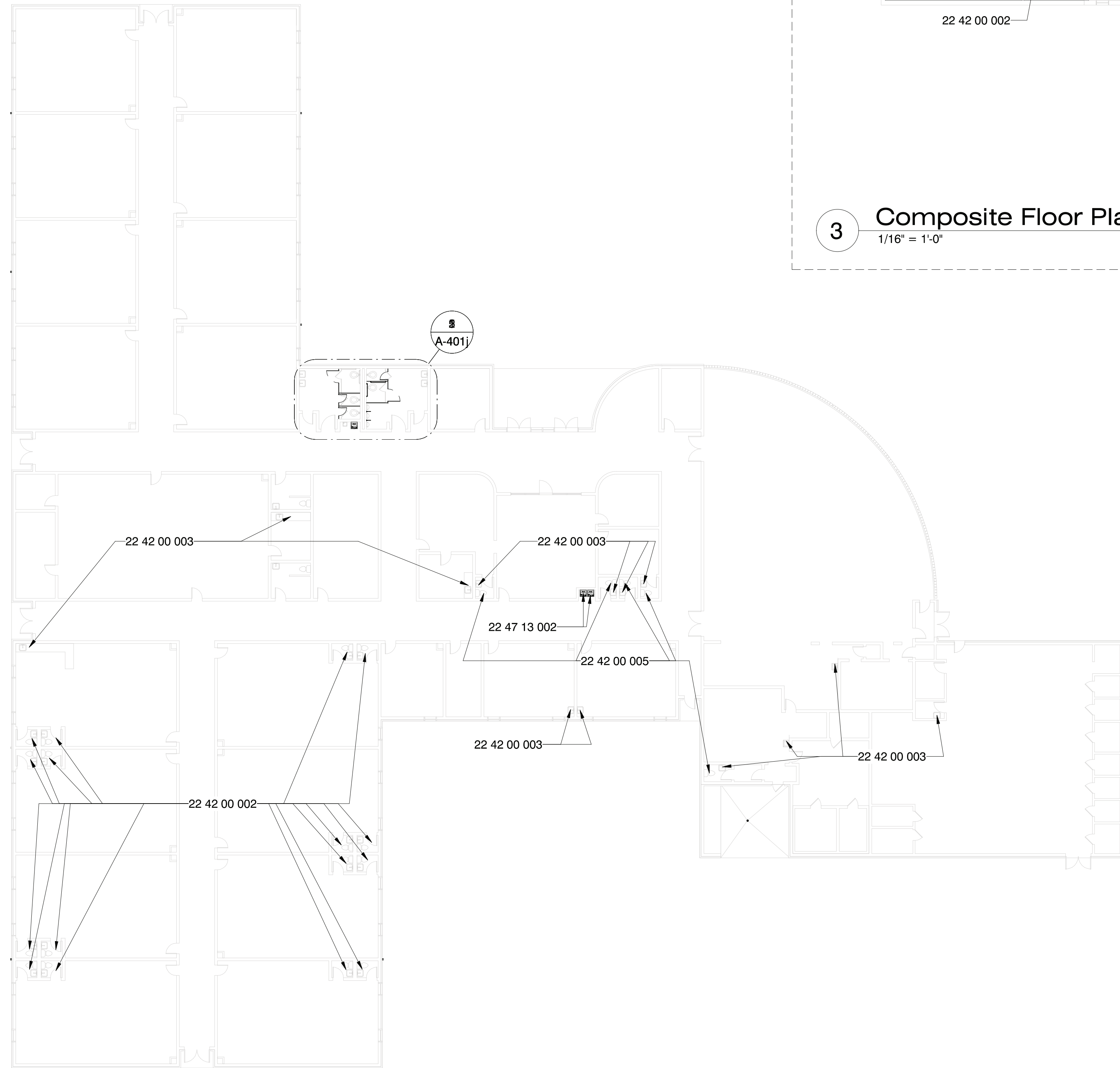
**1 Composite Floor Plan**  
1" = 20'-0"

## Typical Work

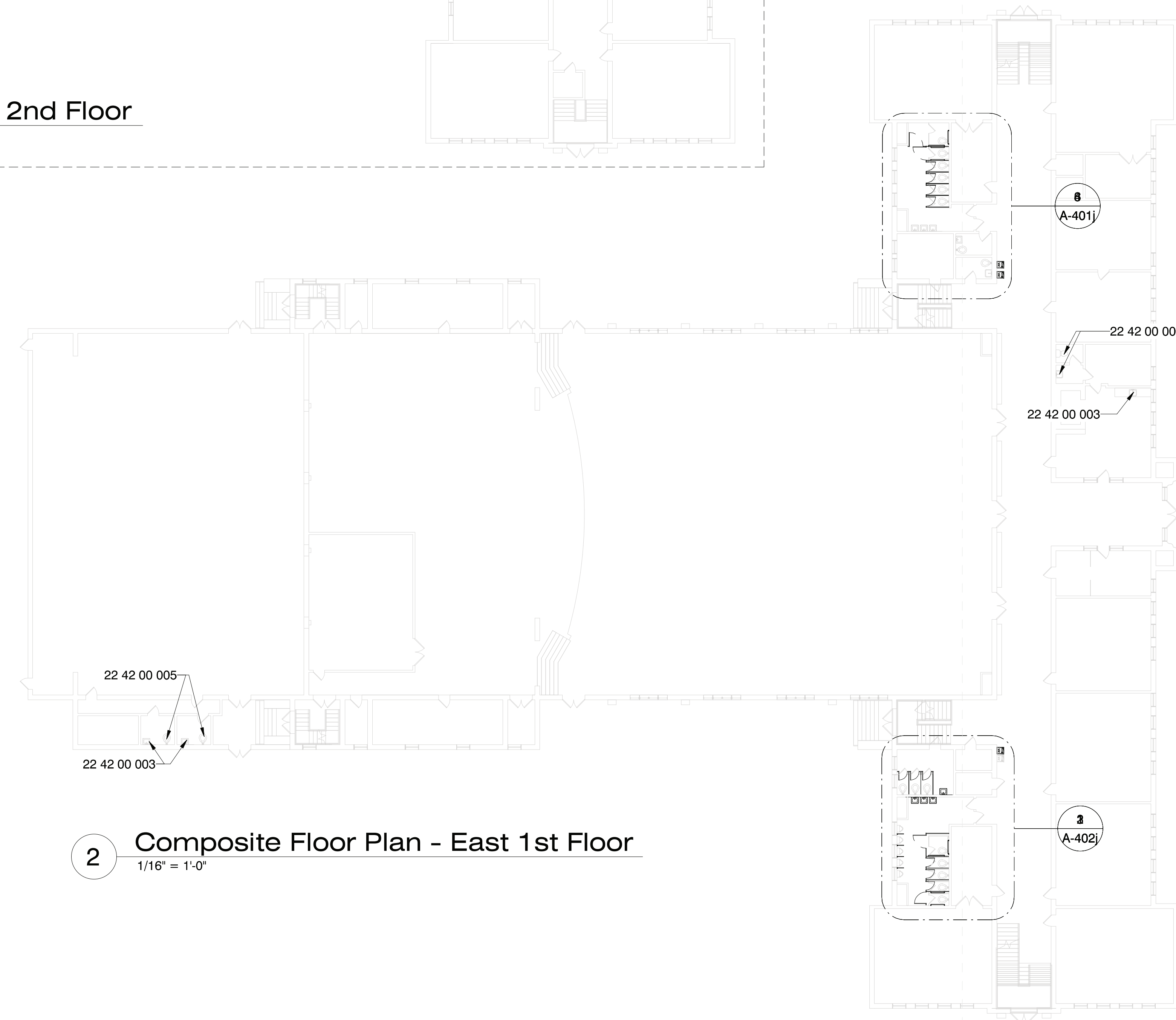
- New Touchless faucets & flushvalves @ all plumbing fixtures everywhere
- Replace Fixtures where outdated or damaged
- Use alternate bidding to get pricing for new toilet partitions where needed (most schools)
- Replace water fountains with touchless bottle filling stations where not already done so



3 Composite Floor Plan - East 2nd Floor  
1/16" = 1'-0"



1 Composite Floor Plan - West  
1/16" = 1'-0"



2 Composite Floor Plan - East 1st Floor  
1/16" = 1'-0"

### Specific Notes

- 22 42 00 002 New fixtures in this toilet room; coordinate with mechanical
- 22 42 00 003 New touchless faucet at sink/cabinet; coordinate with mechanical
- 22 42 00 005 New touchless flushvalve @ fixture; coordinate with mechanical
- 22 47 13 002 Install single drinking fountain here with bottle filler attachment; coordinate with mechanical & electrical drawings

**Not For Construction**

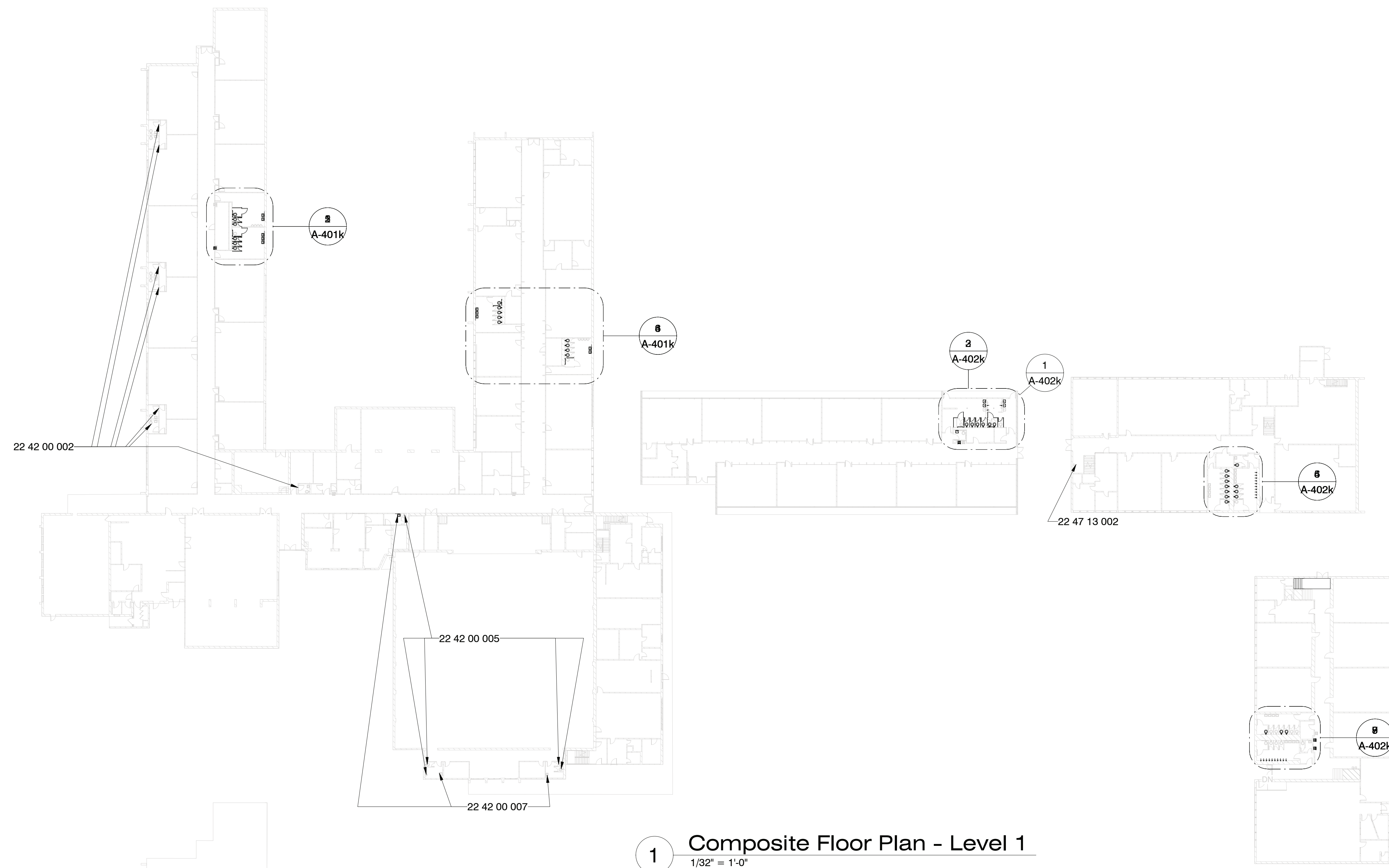
**Greenwood Leflore Consolidated SD ESSER**  
Threadgill Elementary: 1001 Broad St, Greenwood, MS 38930

Schematic Design

Project No	21097
Date	25 March 2022
Revisions	Rev Date
Drawn	PPu
Checked	PPu

**Typical Work**

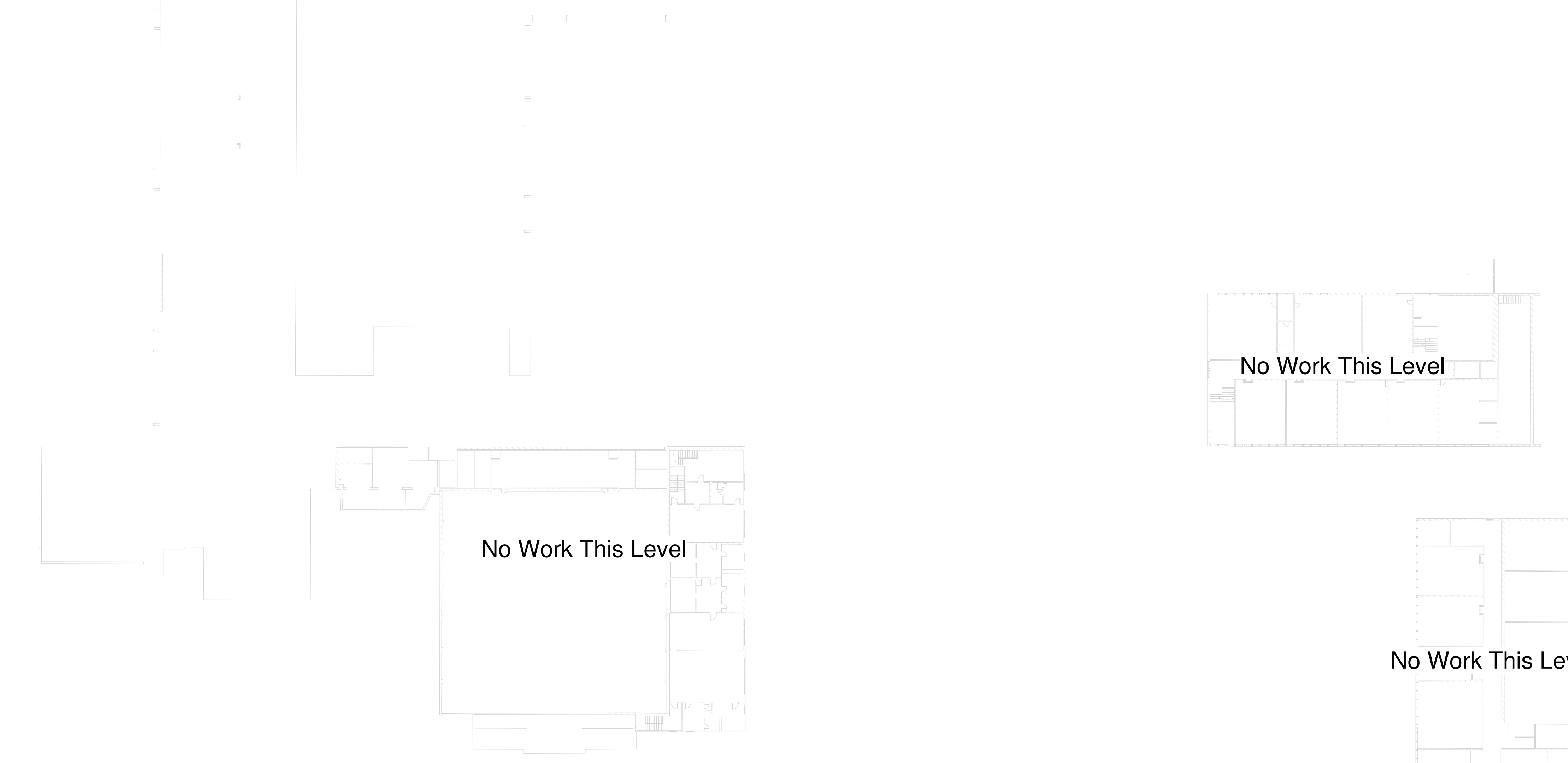
- New Touchless faucets & flushvalves @ all plumbing fixtures everywhere
- Replace Fixtures where outdated or damaged
- Use alternate bidding to get pricing for new toilet partitions where needed (most schools)
- Replace water fountains with touchless bottle filling stations where not already done so



**1 Composite Floor Plan - Level 1**  
1/32" = 1'-0"

**Specific Notes**

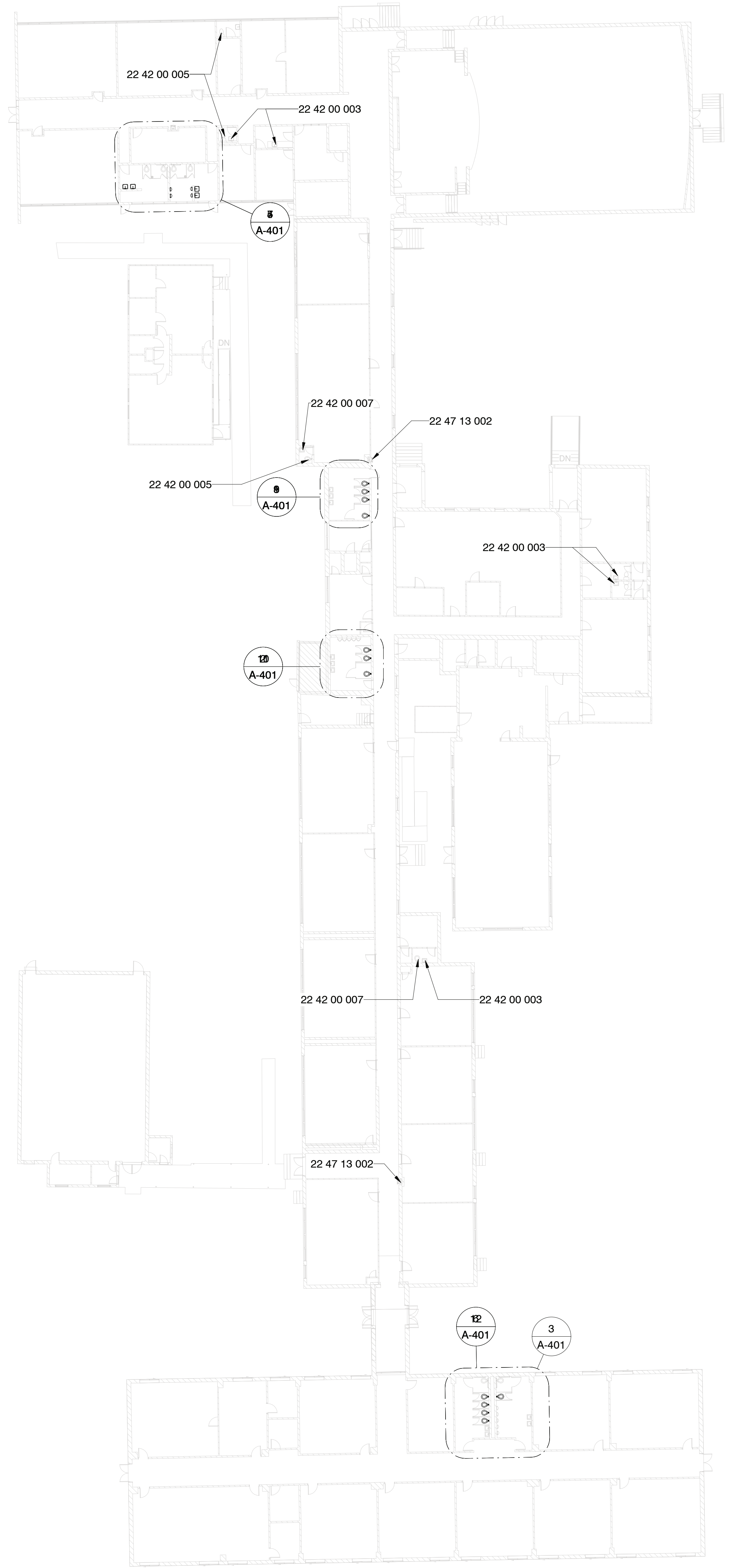
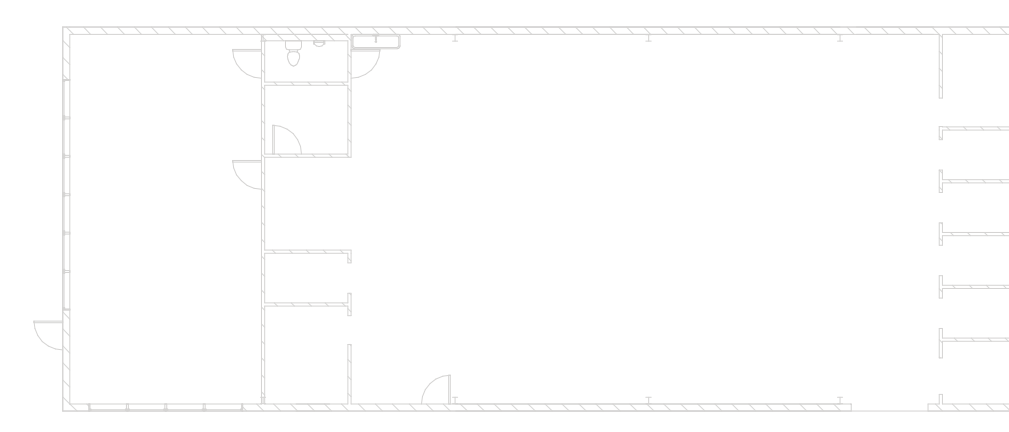
- 22 42 00 002 New fixtures in this toilet room; coordinate with mechanical
- 22 42 00 005 New touchless flushvalve @ fixture; coordinate with mechanical
- 22 42 00 007 Install new fixture; coordinate with mechanical
- 22 47 13 002 Install single drinking fountain here with bottle filler attachment; coordinate with mechanical & electrical drawings



**2 Composite Floor Plan - Level 2**  
1/32" = 1'-0"

## Typical Work

- New Touchless faucets & flushvalves @ all plumbing fixtures everywhere
- Replace Fixtures where outdated or damaged
- Use alternate bidding to get pricing for new toilet partitions where needed (most schools)
- Replace water fountains with touchless bottle filling stations where not already done so



1 Composite Floor Plan  
1" = 20'-0"

### Specific Notes

- 22 42 00 003 New touchless faucet at sink/cabinet; coordinate with mechanical
- 22 42 00 005 New touchless flushvalve @ fixture; coordinate with mechanical
- 22 42 00 007 Install new fixture; coordinate with mechanical
- 22 47 13 002 Install single drinking fountain here with bottle filler attachment; coordinate with mechanical & electrical drawings

Project No	21097
Date	13 January 2022
Revisions	Rev Date
Drawn	PPu
Checked	PPu