

# DALE | BAILEY

J a c k s o n • B i l o x i

AN ASSOCIATION

M i s s i s s i p p i



## Sunflower County Consolidated School District Bond Issue

Ruleville, MS

DPA PN: 21081.01

Design Development  
2/23/2022

**Superintendent** Miskia Davis

**Board of Education**

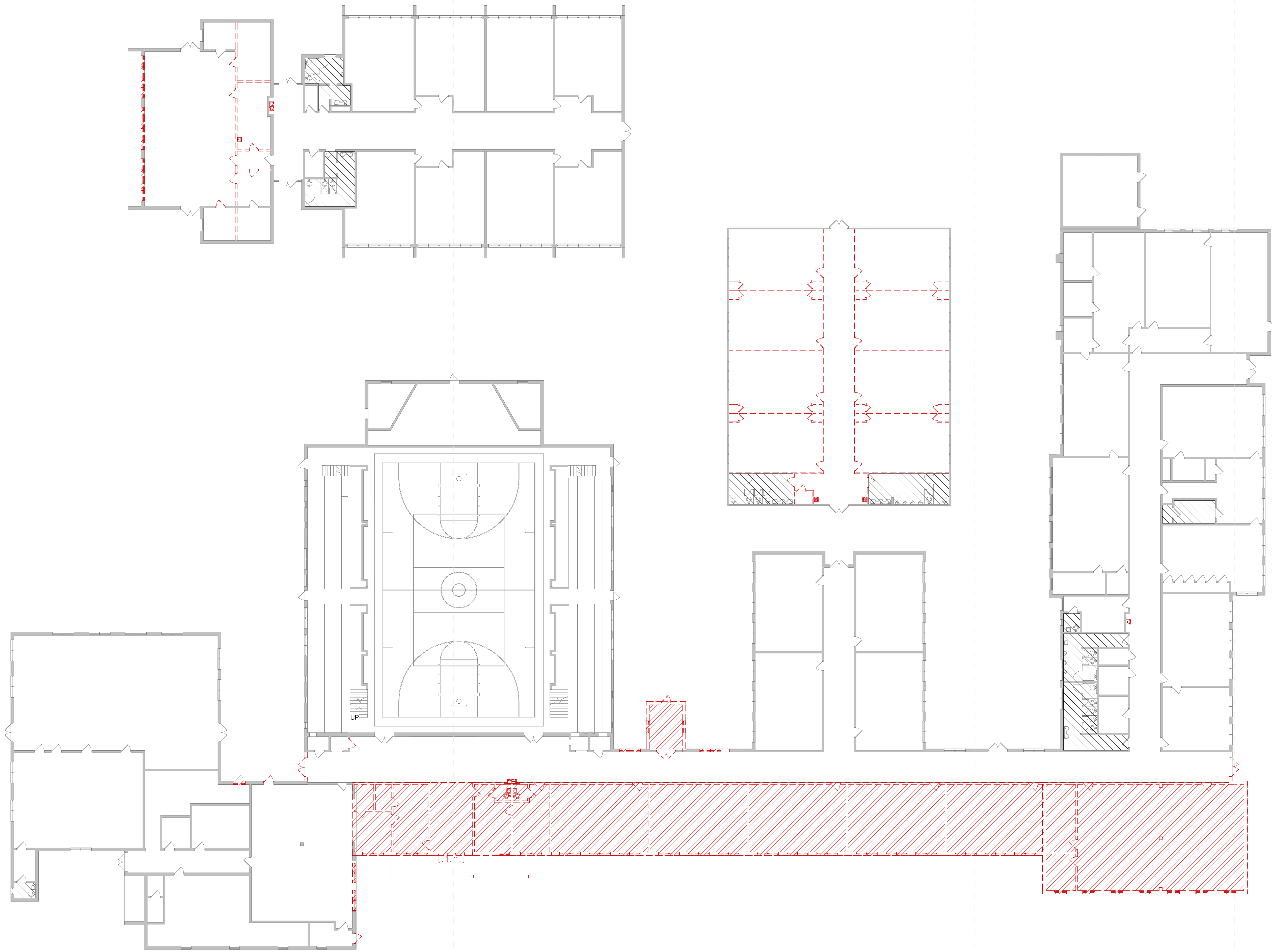
Vice President - District 1	Emma Golden
President - District 2	Edwards Thomas
Member - District 3	Debra Johnson
Member - District 4	Evelyn Woods
Secretary - District 5	Melanie Townsend

**Team**

Owner	Sunflower County Consolidated School District
Architect	Dale   Bailey, An Association
Civil	Gardner Engineering P.A.
Structural	Structural Design Group
Mechanical	GSK, Mechanical
Electrical	The Power Source



1/11/2022 7:04:34 AM  
D:\my stuff\BUSINESS\work\2019\dale\Partners\21027- Sunflower County\uploadedToServer\Ebony's Sunflower's Sunflower High School Bond.rvt



**1** Demolition Floor Plan - Working  
1/16" = 1'-0"

**DALE BAILEY**  
AN ASSOCIATION

Architects

One Jackson Place 250  
188 East Capitol Street  
Jackson, MS 39201  
p 601.352.5411

201 Park Court Suite B  
Ridgeland, MS 39157  
p 601.790.9432

161 Lameuse St. Suite 201  
Biloxi, MS 39530  
p 228.374.1409

dalebaileyplans.com

**Not For Construction**

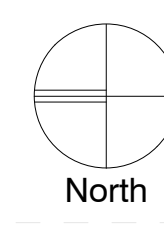
Sunflower County Consolidated School District Bond Issue  
**21081.02 Gentry High School**  
Indianola, MS



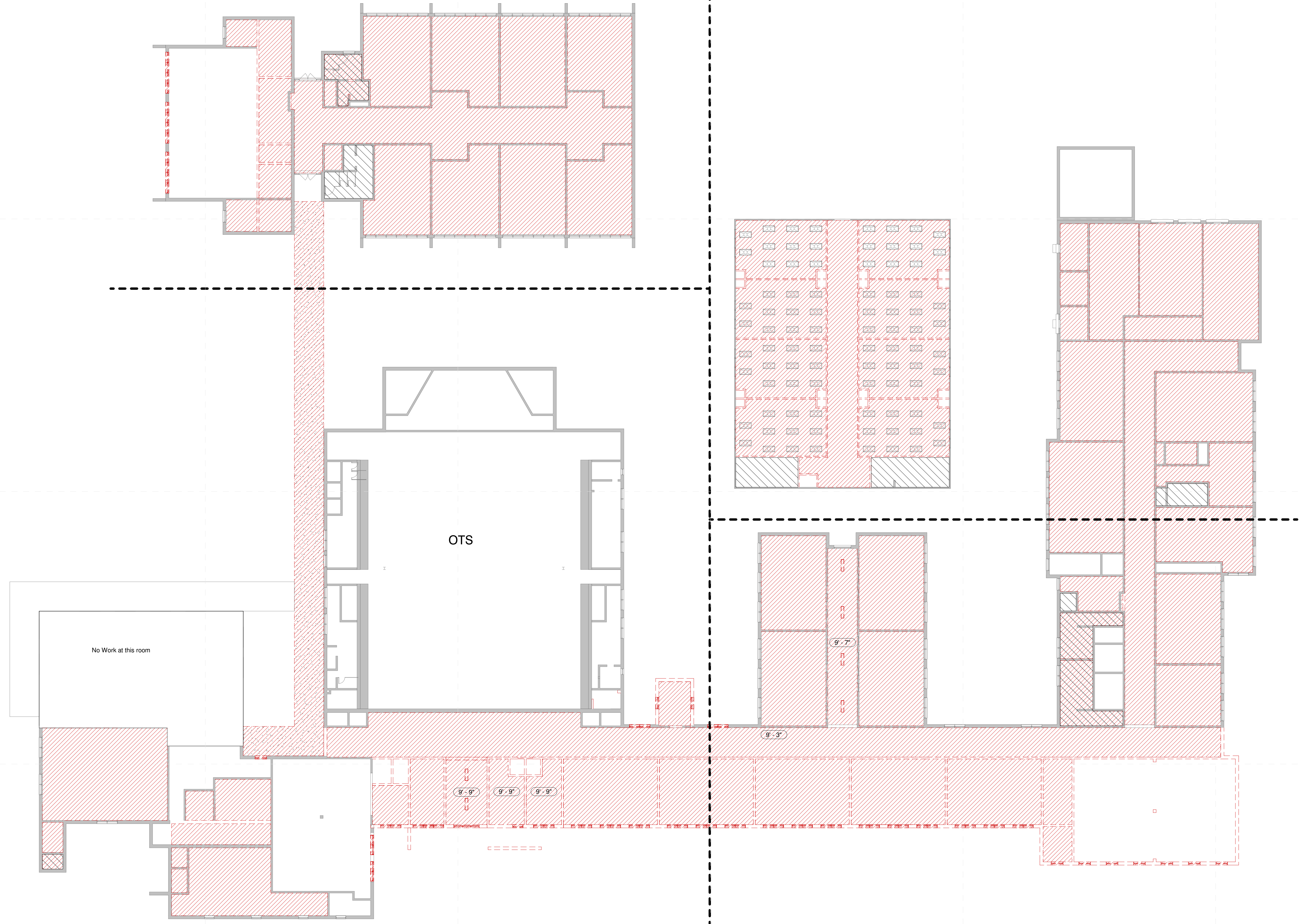
Design  
Development

Project No	21081.01
Date	2/23/2022
Revisions	Rev Date


**AD001a**  
Composite Demolition Plan



1/11/2022 7:04:36 AM  
D:\my stuff\BUSINESS\work\2019 dale\Partners\21027- Sunflower County\uploadedToServer\Ebony's Sunflower\21081 Thomas Edwards High School Bond.rvt



1 Composite Demo RCP  
1/16" = 1'-0"

A-2-30a

**DALE BAILEY**  
AN ASSOCIATION

Architects  
One Jackson Place 250  
188 East Capitol Street  
Jackson, MS 39201  
p 601.352.5411

201 Park Court Suite B  
Ridgeland, MS 39157  
p 601.790.9432

161 Lameuse St. Suite 201  
Biloxi, MS 39530  
p 228.374.1409

dalebaileyplans.com

**Not For Construction**

Sunflower County Consolidated School District Bond Issue  
**21081.01 Thomas Edwards High School**  
Ruleville, MS

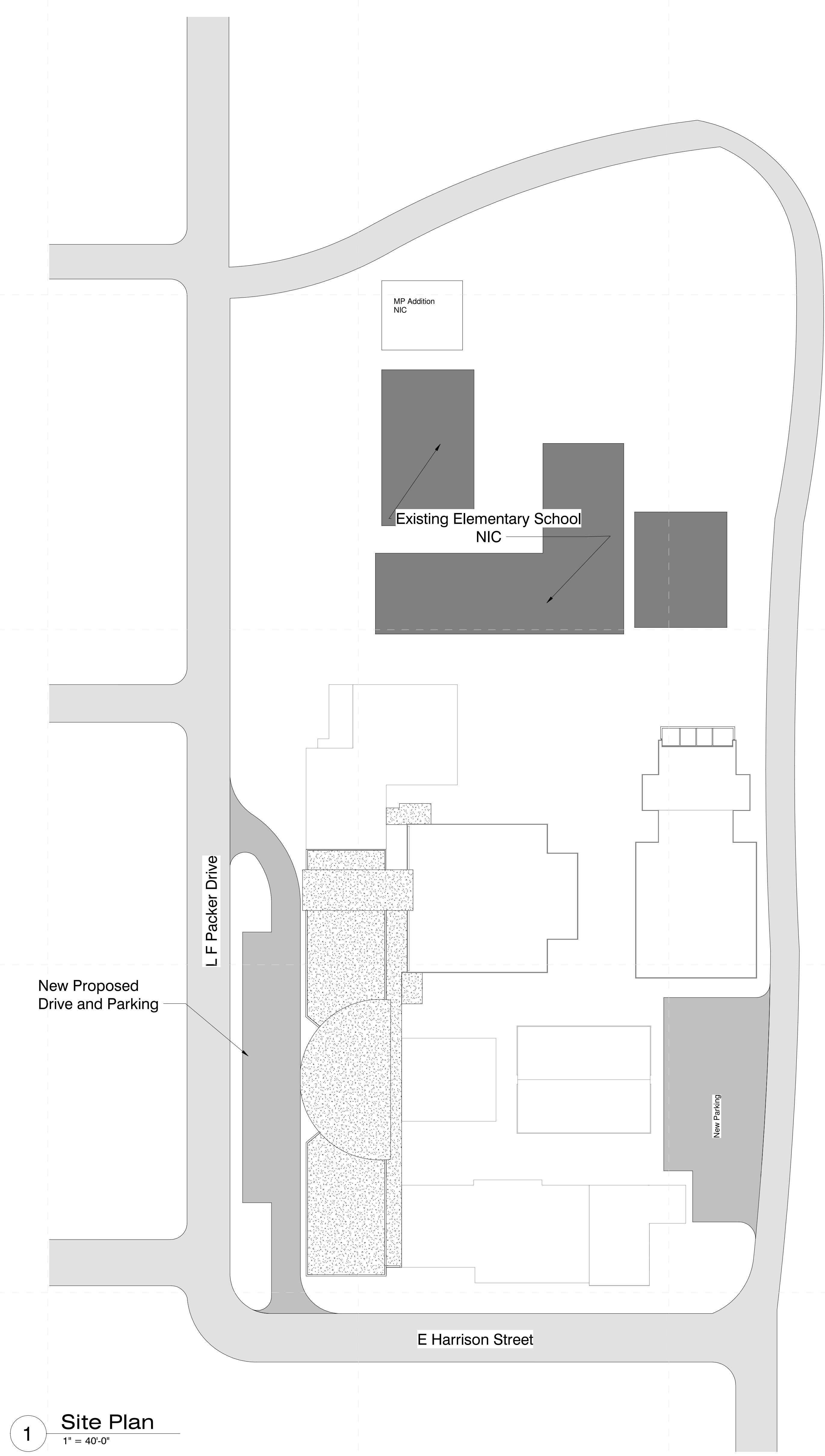


Design  
Development

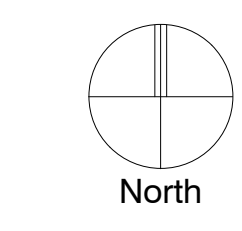
Project No	21081.01
Date	2/23/2022
Revisions	Rev Date

**AD002a**  
Composite Demo RCP

1/11/2022 7:04:37 AM  
D:\my stuff\BUSINESS\work\2019\dale\Partners\21027 - Sunflower County\_\uploadedToServer\Ebony's Sunflower\21081 Thomas Edwards High School Bond.rvt



**1** Site Plan  
1" = 40'-0"



**DALE BAILEY**  
AN ASSOCIATION

Architects

One Jackson Place 250  
188 East Capitol Street  
Jackson, MS 39201  
p 601.352.5411

201 Park Court Suite B  
Ridgeland, MS 39157  
p 601.790.9432

161 Lameuse St. Suite 201  
Biloxi, MS 39530  
p 228.374.1409

dalebaileyplans.com

**Not For Construction**

Sunflower County Consolidated School District Bond Issue  
**21081.01 Thomas Edwards High School**  
Ruleville, MS

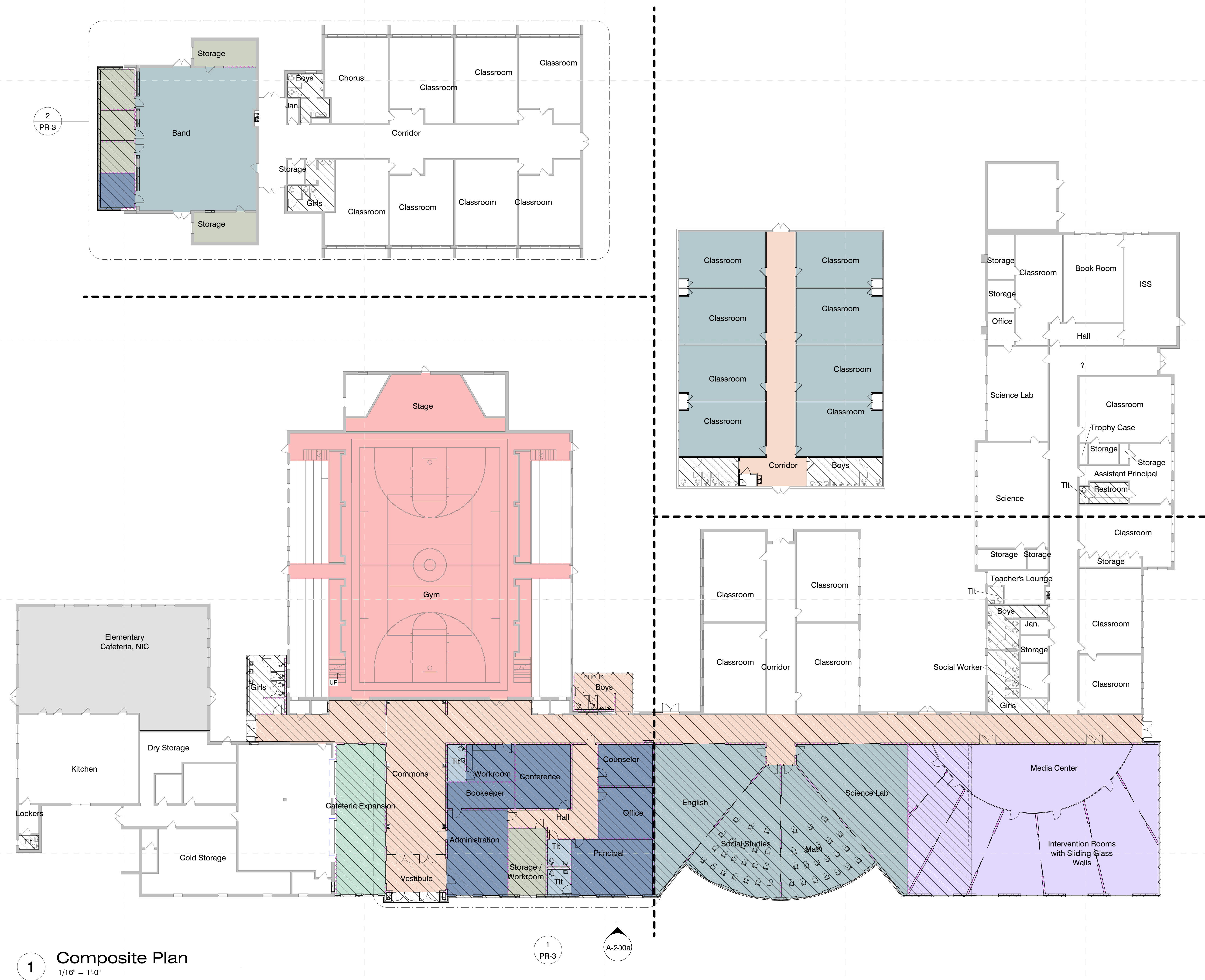


Design  
Development

Project No	21081.01
Date	2/23/2022
Revisions	Rev Date

**AS101a**  
Site Plan

1/11/2022 7:04:22 AM  
D:\my stuff\BUSINESS\work\2019 dale\Partners\21027- Sunflower County\_\uploaded\to\Server\Ebony's Sunflower\21027- Thomas Edwards High School Bond.dwg



**1 Composite Plan**  
1/16" = 1'-0"

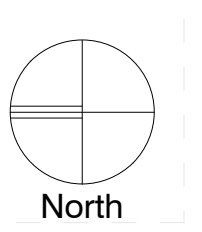
1 PR-3  
A-2-00a

**Not For Construction**

Sunflower County Consolidated School District Bond Issue  
**21081.01 Thomas Edwards High School**  
Ruleville, MS



Design Development  
Project No 21081.01  
Date 2/23/2022  
Revisions Rev Date



1/11/2022 7:04:23 AM  
D:\my stuff\BUSINESS\work\2019.dale\Partners\21027- Sunflower County\_\uploadedToServer\Ebony's Sunflower\21081 Thomas Edwards High School Bond.rvt

Architects

One Jackson Place 250  
188 East Capitol Street  
Jackson, MS 39201  
p 601.352.5411

201 Park Court Suite B  
Ridgeland, MS 39157  
p 601.790.9432

161 Lameuse St. Suite 201  
Biloxi, MS 39530  
p 228.374.1409

dalebaileyplans.com

**Not For  
Construction**

Sunflower County Consolidated School District Bond Issue  
**21081.01 Thomas Edwards High School**  
Ruleville, MS



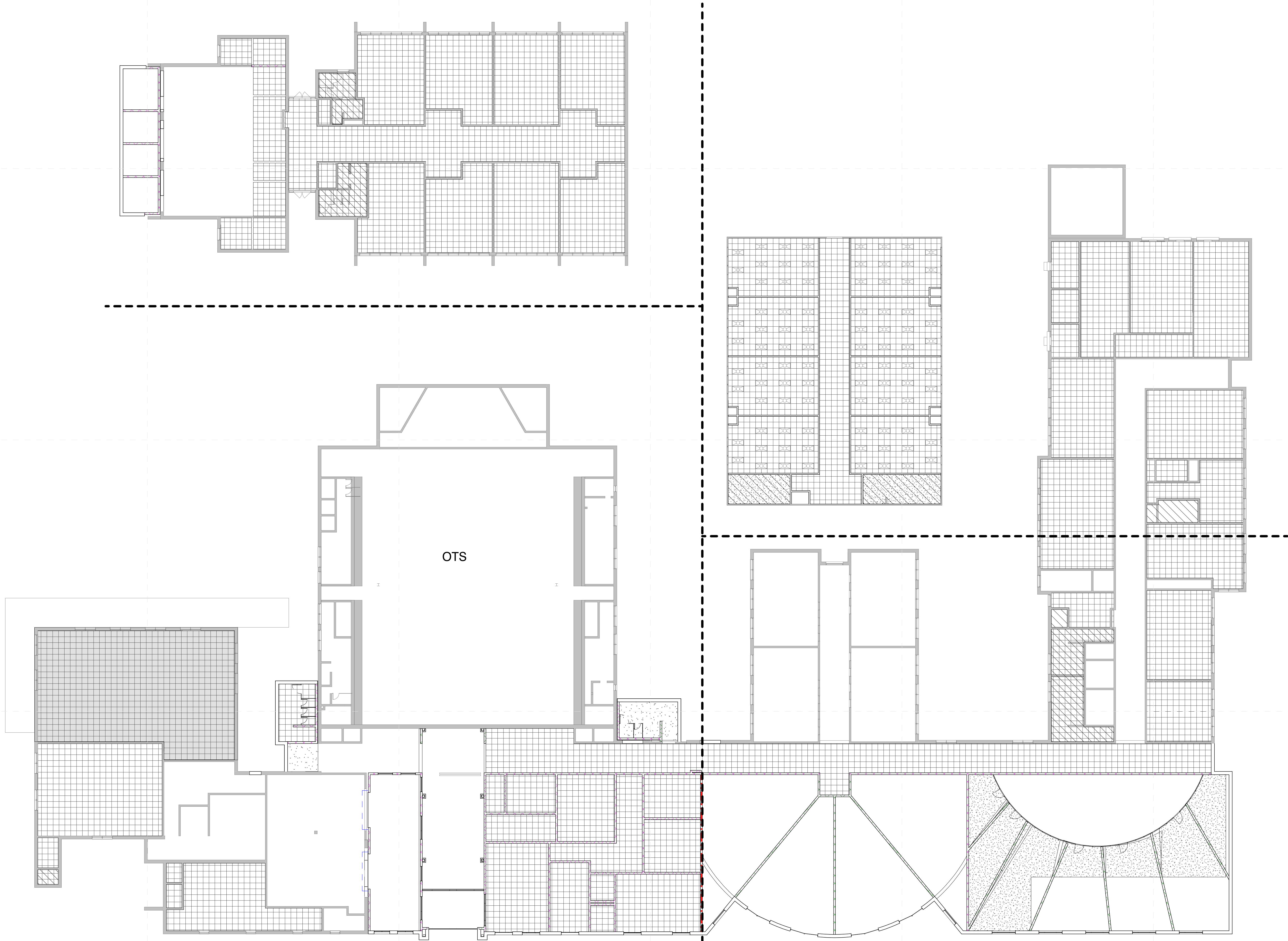
Design  
Development

Project No 21081.01  
Date 2/23/2022  
Revisions Rev Date

**A-002a**

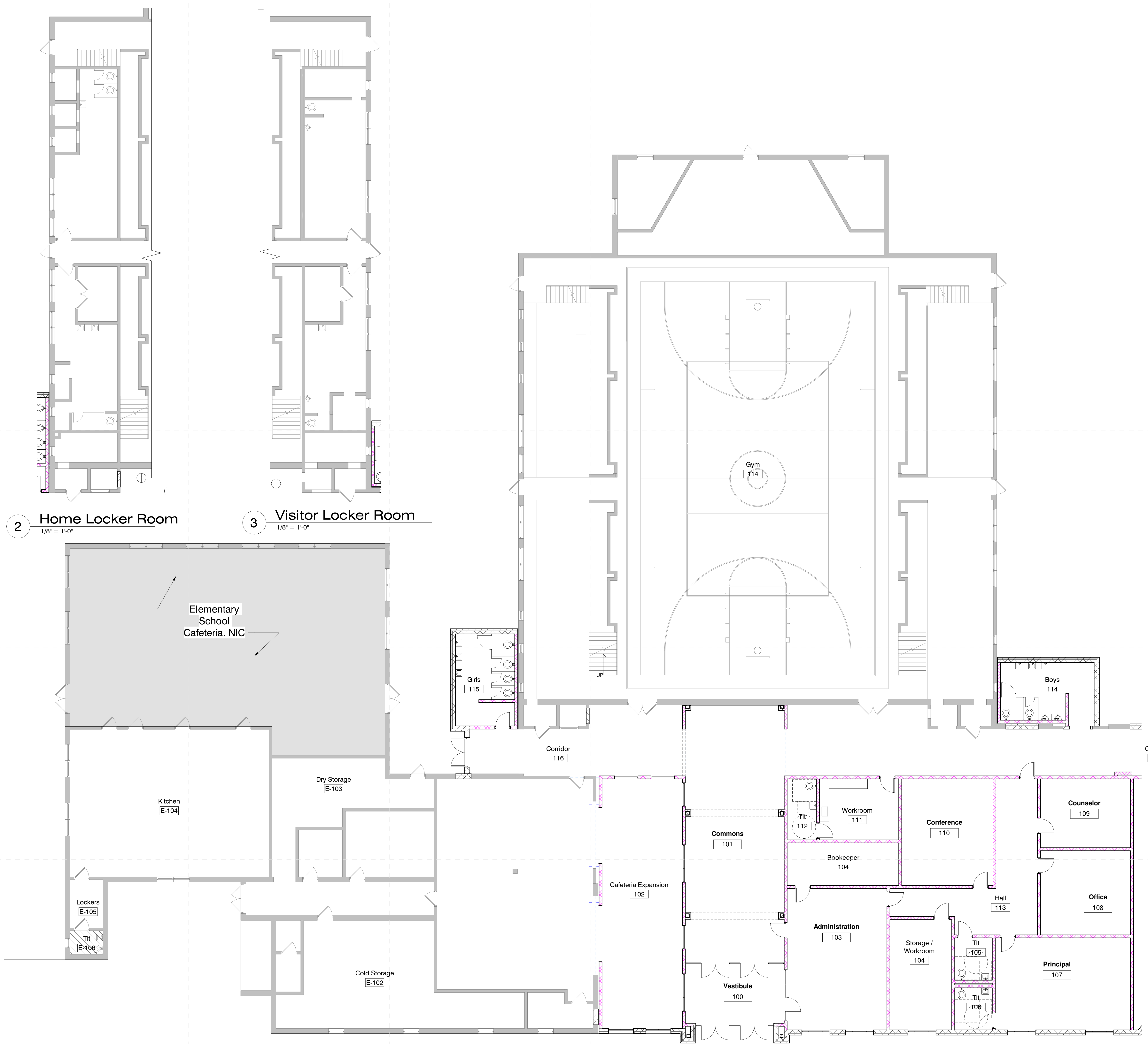
Composite RCP

**1** Ground Floor  
1/16" = 1'-0"



A-2-30a

1/11/2022 7:04:25 AM D:\my stuff\BUSINESS\work\2019 dale\Partners\21027- Sunflower County\_ uploadedToServer\Ebony's Sunflower's Sunflower High School Bond.nrt



2 Home Locker Room  
1/8" = 1'-0"

3 Visitor Locker Room  
1/8" = 1'-0"

1 Dimensioned Floor Plan - Part A  
1/8" = 1'-0"

- General Plan Notes**
- All interior walls to be type "B1" UNO
  - All furniture shown in plan is NIC.
  - All flooring is to extend underneath casework.
  - All door frames in masonry wall to be located 8" off perpendicular wall (typ.) unless indicated otherwise. All door frames in metal stud walls to be located 4" off perpendicular walls (typ.) unless indicated otherwise. Provide min. clear of 12" on push side of door and 18" on pull side.
  - Reference building elevations (A-200 Sheets) for exterior control joint locations.
  - All DS tie into boot and underground water line unless otherwise noted, see Civil.
  - See AG series sheets for floor finish patterns.
  - All CMU wall corners & window sills to have 1" diameter radius. Bottom course of CMU corners are not to be radiused to receive finish base as scheduled.
  - All backsides of bathroom partition doors and single unit restroom doors to have a Coat Hook (CH) installed.
  - All dimensions are to interior finish face U.N.O.

**DALE BAILEY**  
AN ASSOCIATION

Architects

One Jackson Place 250  
188 East Capitol Street  
Jackson, MS 39201  
p 601.352.5411

201 Park Court Suite B  
Ridgeland, MS 39157  
p 601.790.9432

161 Lameuse St. Suite 201  
Biloxi, MS 39530  
p 228.374.1409

dalebaileyplans.com

**Not For Construction**

Sunflower County Consolidated School District Bond Issue  
**21081.01 Thomas Edwards High School**  
Ruleville, MS

Design Development

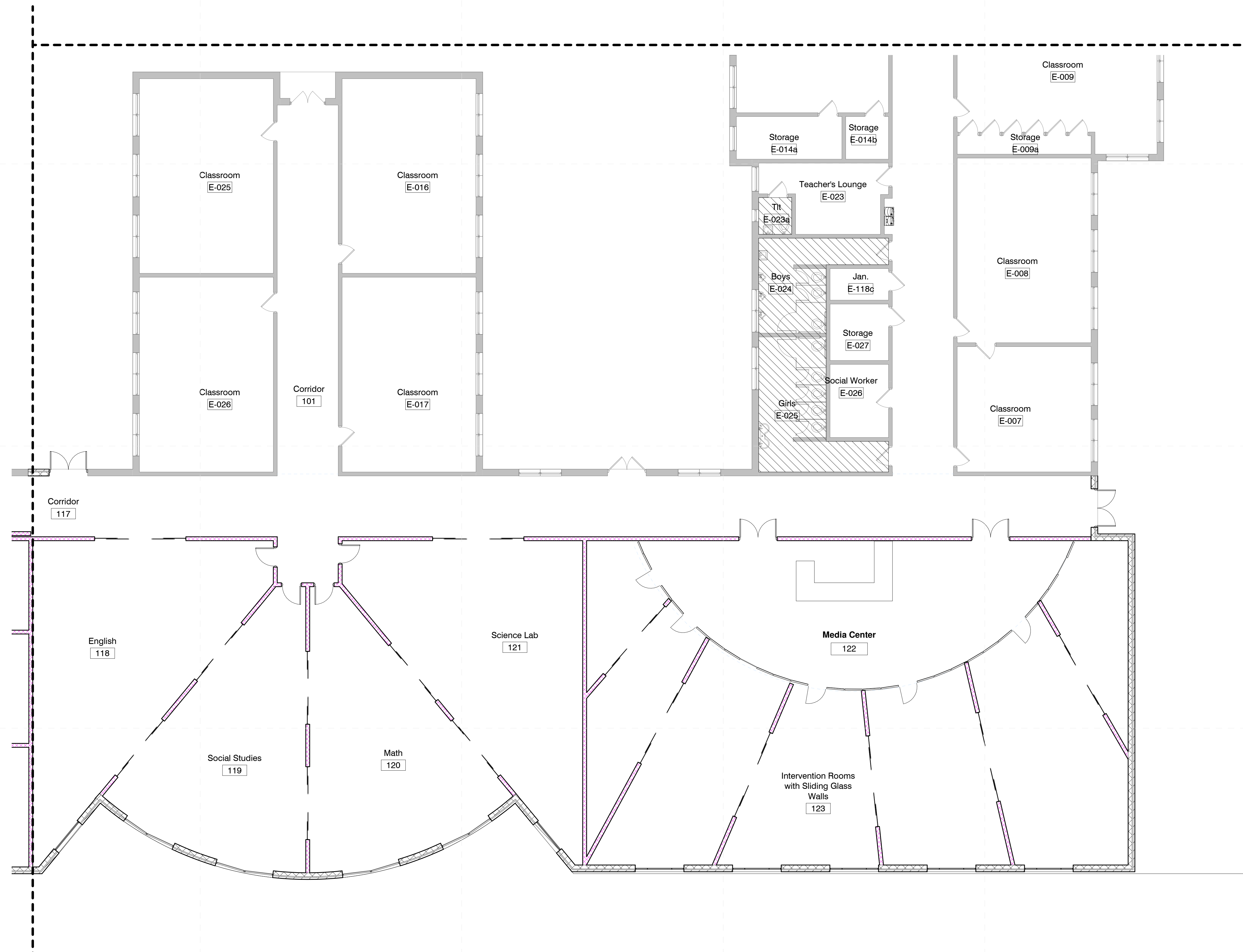
Project No	21081.01
Date	2/23/2022
Revisions	Rev Date

**A-101a**

Floor Plan A



1/11/2022 7:04:26 AM  
D:\my stuff\BUSINESS\work\2019\dale\Partners\21027 - Sunflower County\_\uploadedToServer\Ebony's Sunflower\21081 Thomas Edwards High School Bond.rvt



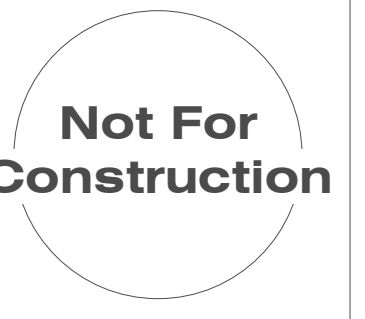
1 Dimensioned Floor Plan - Part B  
1/8" = 1'-0"

General Plan Notes

- All interior walls to be type "B1" UNO
- All furniture shown in plan is NIC.
- All flooring is to extend underneath casework.
- All door frames in masonry wall to be located 8" off perpendicular wall (typ.) unless indicated otherwise. All door frames in metal stud walls to be located 4" off perpendicular walls (typ.) unless indicated otherwise. Provide min. clear of 12" on push side of door and 18" on pull side.
- Reference building elevations (A-200 Sheets) for exterior control joint locations.
- All DS tie into boot and underground water line unless otherwise noted, see Civil.
- See AG series sheets for floor finish patterns.
- All CMU wall corners & window sills to have 1" diameter radius. Bottom course of CMU corners are not to be radiused to receive finish base as scheduled.
- All backsides of bathroom partition doors and single unit restroom doors to have a Coat Hook (CH) installed.
- All dimensions are to interior finish face U.N.O.



Architects  
 One Jackson Place 250  
 188 East Capitol Street  
 Jackson, MS 39201  
 p 601.352.5411  
 201 Park Court Suite B  
 Ridgeland, MS 39157  
 p 601.790.9432  
 161 Lameuse St. Suite 201  
 Biloxi, MS 39530  
 p 228.374.1409  
 dalebaileyplans.com



Sunflower County Consolidated School District Bond Issue  
**21081.01 Thomas Edwards High School**  
 Ruleville, MS

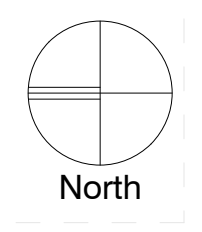


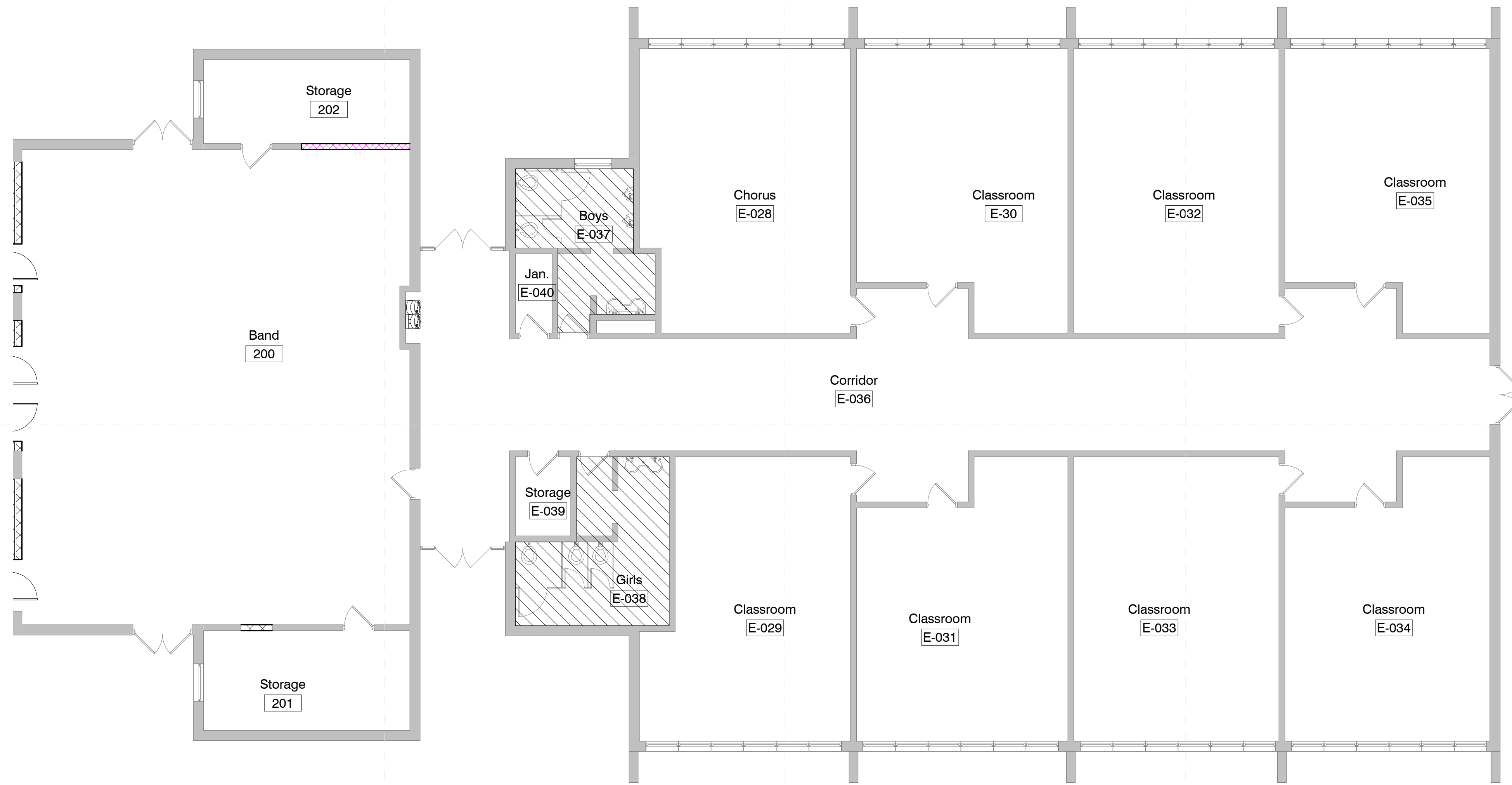
Design Development

Project No	21081.01
Date	2/23/2022
Revisions	Rev Date

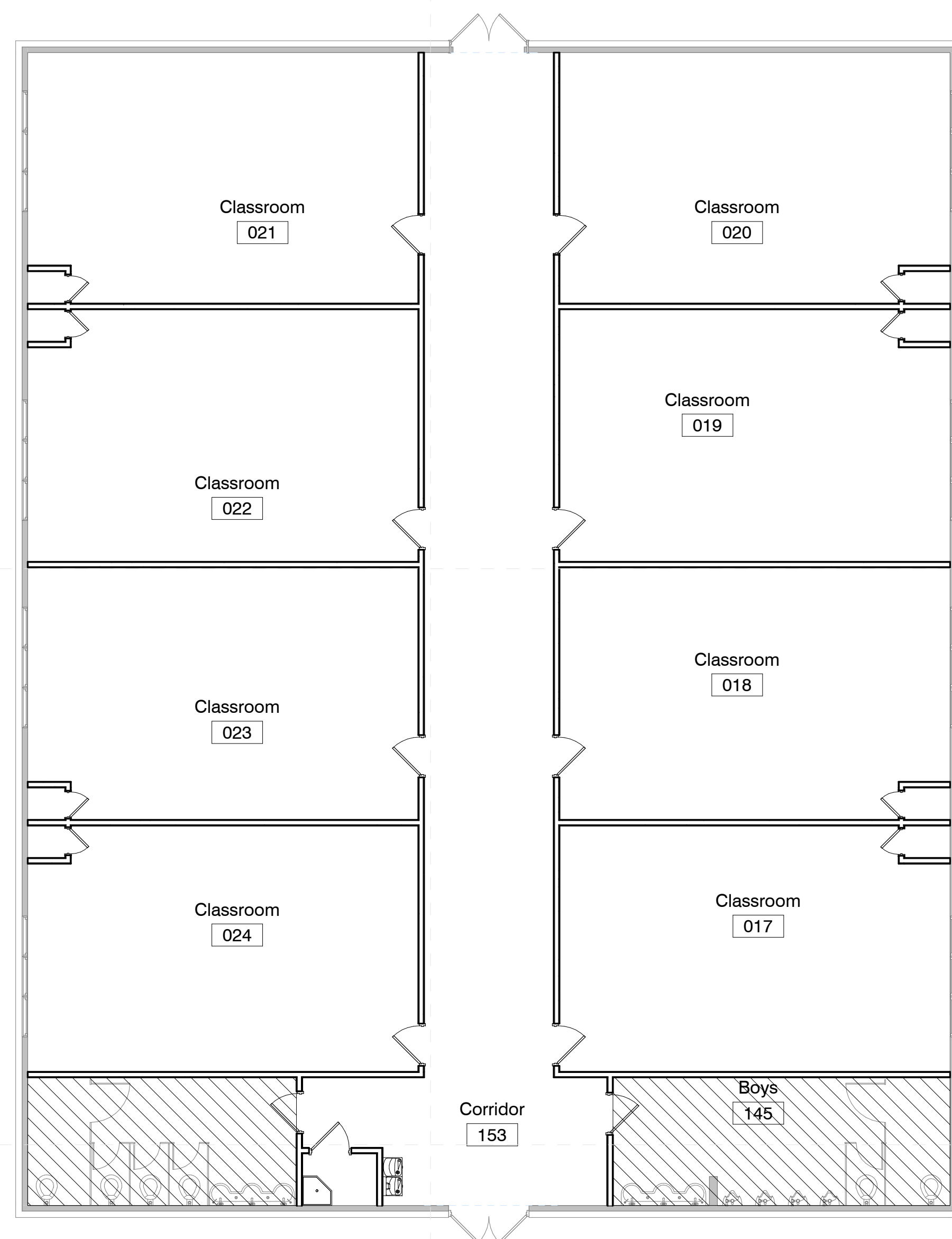
A-102a

Floor Plan B

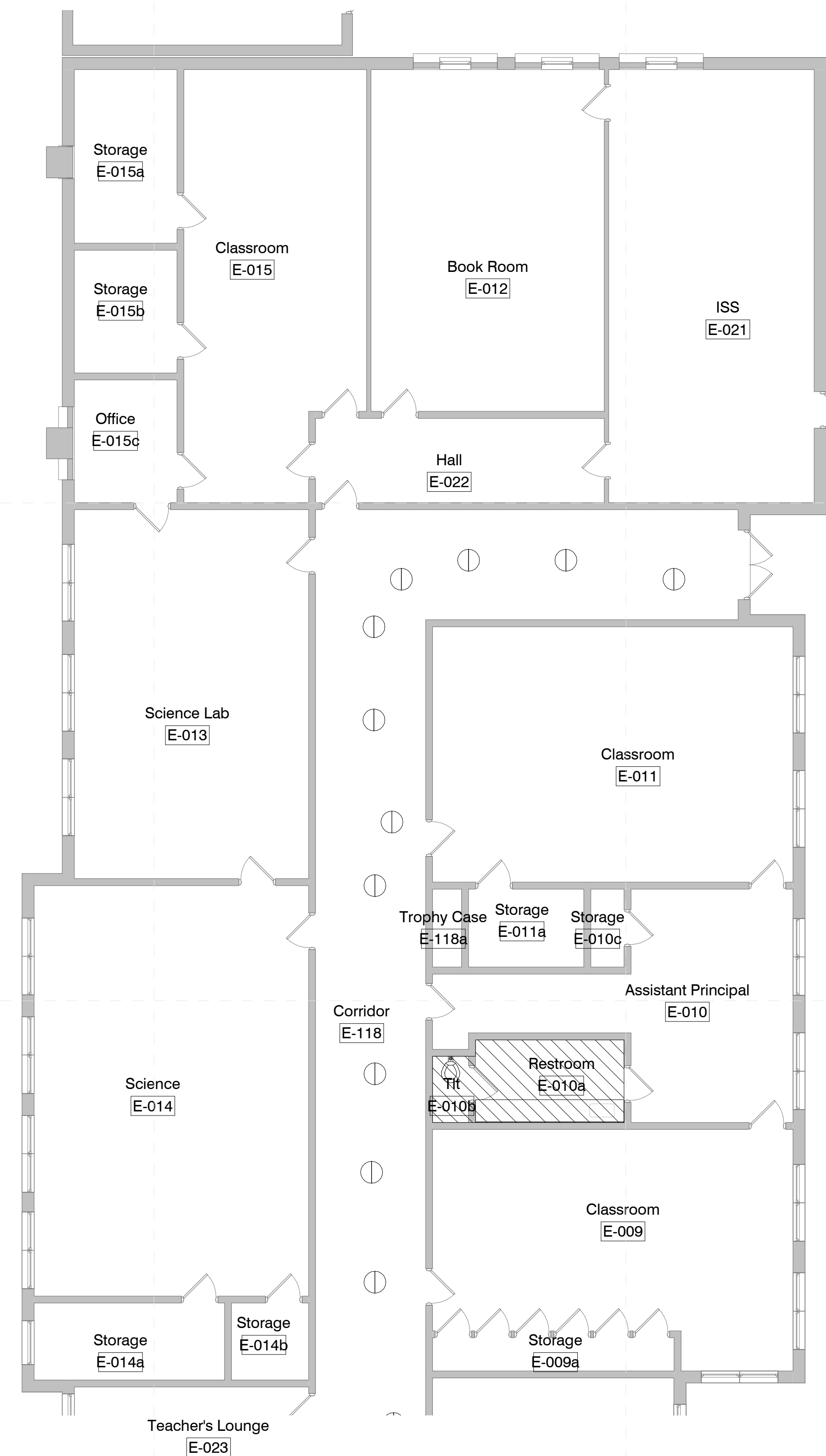




2 Dimensioned Floor Plan - Part D  
1/8" = 1'-0"



1 Dimensioned Floor Plan - Part C  
1/8" = 1'-0"



General Plan Notes

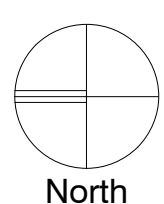
- All interior walls to be type "B1" UNO
- All furniture shown in plan is NIC.
- All flooring is to extend underneath casework.
- All door frames in masonry wall to be located 8" off perpendicular wall (typ.) unless indicated otherwise. All door frames in metal stud walls to be located 4" off perpendicular walls (typ.) unless indicated otherwise. Provide min. clear of 12" on push side of door and 18" on pull side.
- Reference building elevations (A-200 Sheets) for exterior control joint locations.
- All DS tie into boot and underground water line unless otherwise noted, see Civil.
- See AG series sheets for floor finish patterns.
- All CMU wall corners & window sills to have 1" diameter radius. Bottom course of CMU corners are not to be radiused to receive finish base as scheduled.
- All backsides of bathroom partition doors and single unit restroom doors to have a Coat Hook (CH) installed.
- All dimensions are to interior finish face U.N.O.

Not For Construction



Design Development

Project No	21081.01
Date	2/23/2022
Revisions	Rev Date



Architects

One Jackson Place 250  
188 East Capitol Street  
Jackson, MS 39201  
p 601.352.5411

201 Park Court Suite B  
Ridgeland, MS 39157  
p 601.790.9432

161 Lameuse St. Suite 201  
Biloxi, MS 39530  
p 228.374.1409

dalebaileyplans.com

**Not For  
Construction**

Sunflower County Consolidated School District Bond Issue  
**21081.01 Thomas Edwards High School**  
Ruleville, MS

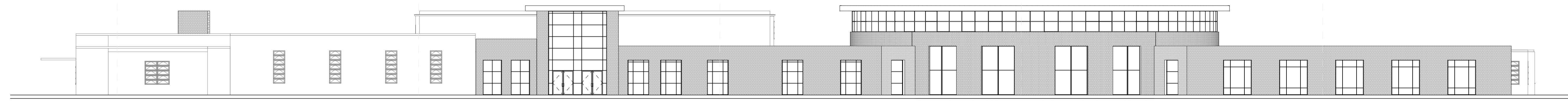


Design  
Development

Project No	21081.01
Date	2/23/2022
Revisions	Rev Date

**A-200a**

Exterior Elevations



**1 Overall Front Elevation**  
1/16" = 1'-0"