

**Not For
Construction**

PCS Junior High School Renovations

132 N. Main St
Lower Gym Level
Pontotoc, MS 38863

Schematic
Design

Project No 21064

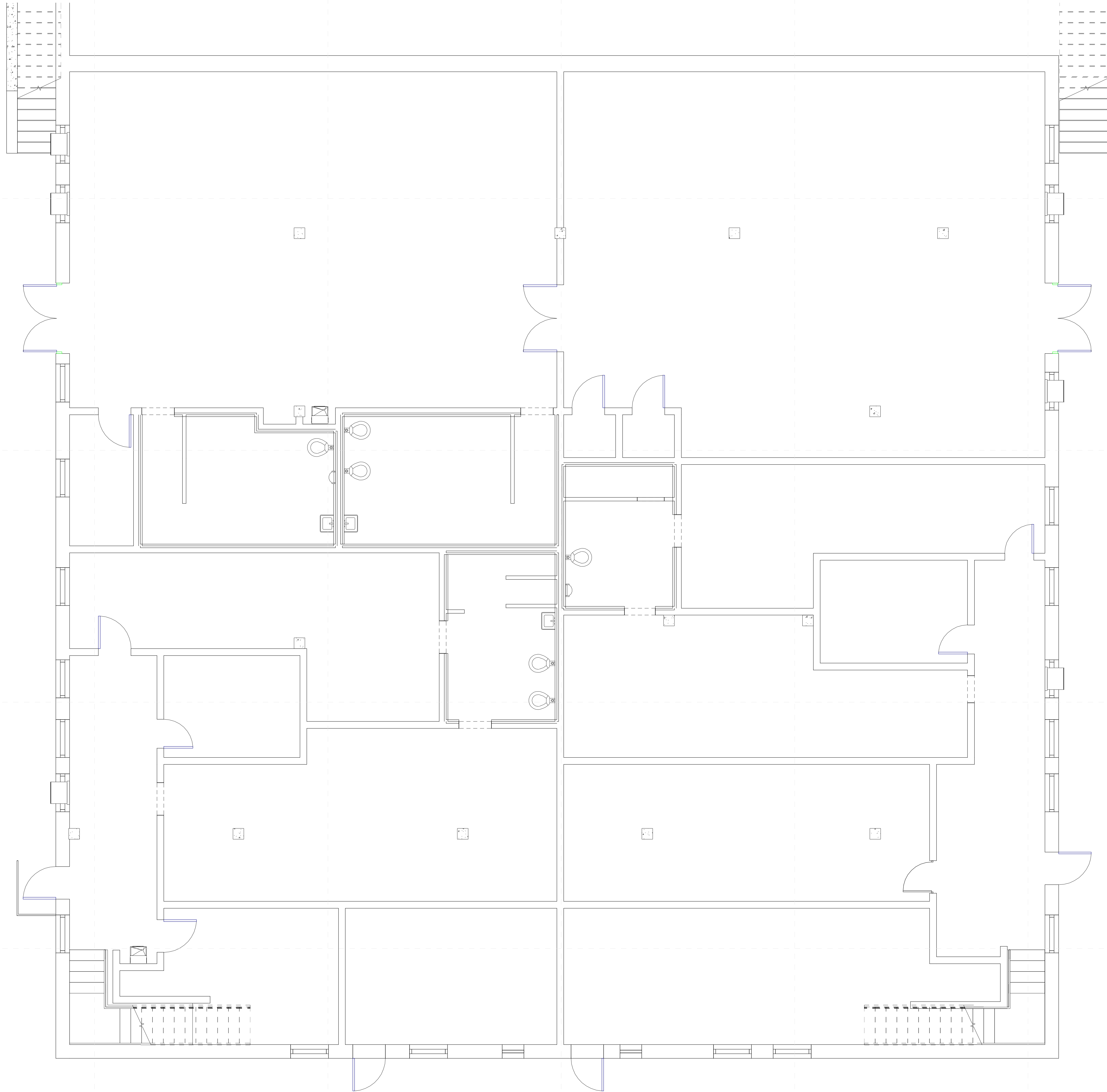
Date

Revisions Rev Date

Revisions	Rev	Date

A-001

Gym Lower LVL



1 PCS Junior High 1st LVL - Locker/Band - Existing
1/4" = 1'-0"

Not For Construction

PCS Junior High School Renovations
132 N. Main St
Lower Gym Level
Pontotoc, MS 38863

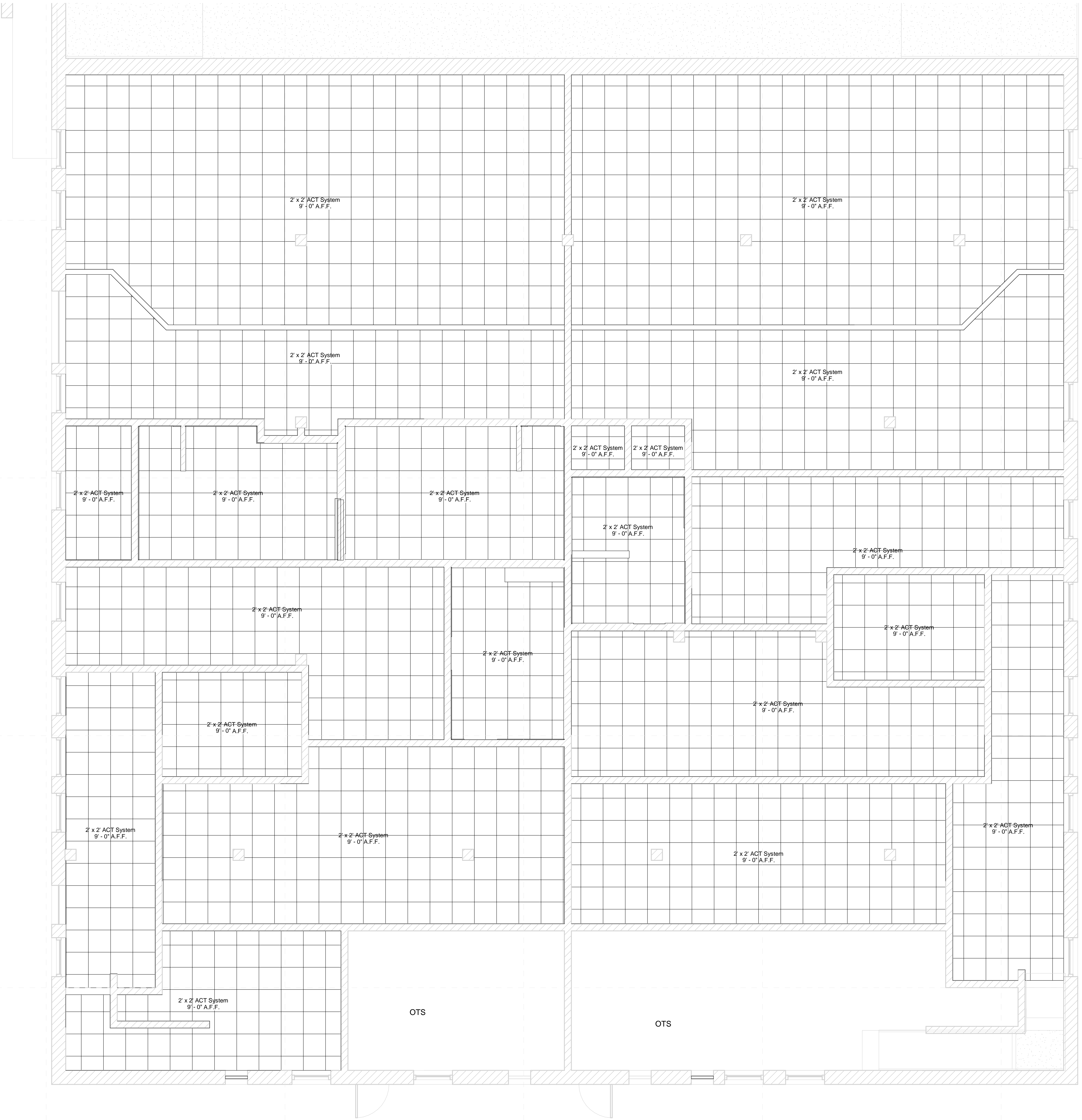
Schematic Design

Project No 21064
Date
Revisions Rev Date

A-141

RCP - New Construction

- Ceiling Legend**
- Moisture Resistant Acoustical Lay In Ceiling
 - Colored Acoustical Lay In Ceiling
 - Vinyl Faced Acoustical Lay In Ceiling
 - Composite Deck Underside (exposed)
 - 2x4 Acoustical Lay In Ceiling (TO BE REMOVED)
 - 2x2 Acoustical Lay In Ceiling (NEW)
 - Painted 5/8" Type-X Fire Gypsum
 - Concealed Fastender Painted Metal Soffit
 - 2x4 Fluorescent Fixture
 - Surface-Mounted Fluorescent Light Fixture
 - Recessed Can Light Fixture
 - HVAC Supply Grille
 - HVAC Return Grille
 - Exterior Wall Light
 - Interior Wall Light
 - Open to Structure (OTS)



1 PCS Junior High School - Locker/Band - New Construction
1/4" = 1'-0"

9/17/2021 5:00:23 PM D:\my stuff\BUSINESS\work\2019\dale\Partners\21064 - Pontotoc ESSRL\models\PCS Junior High School.rvt

