

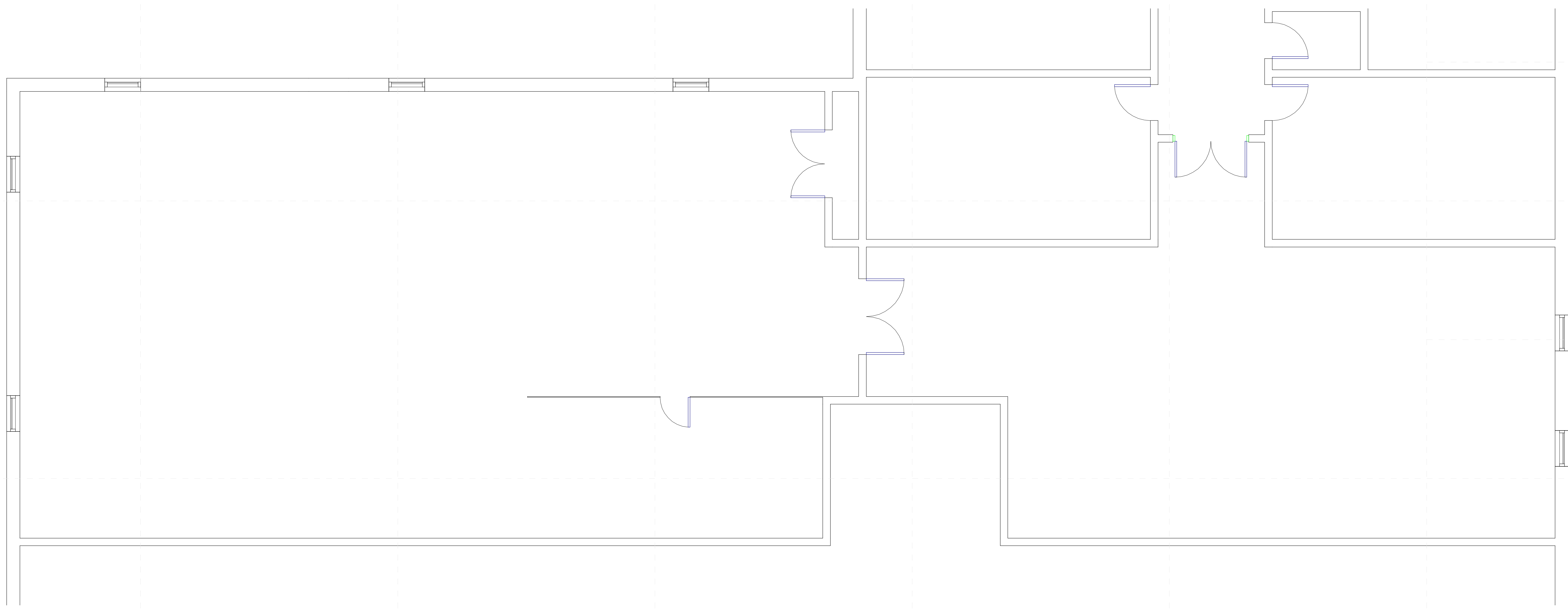
**Not For
Construction**

PCS High School Renovations
123 N Main St
Pontotoc, MS 38863

Schematic
Design

Project No	21064
Date	8/20/2021
Revisions	Rev Date

A001
Floor Plan



1 PCS HS Band Unfinished Space - Existing
1/4" = 1'-0"

**Not For
Construction**

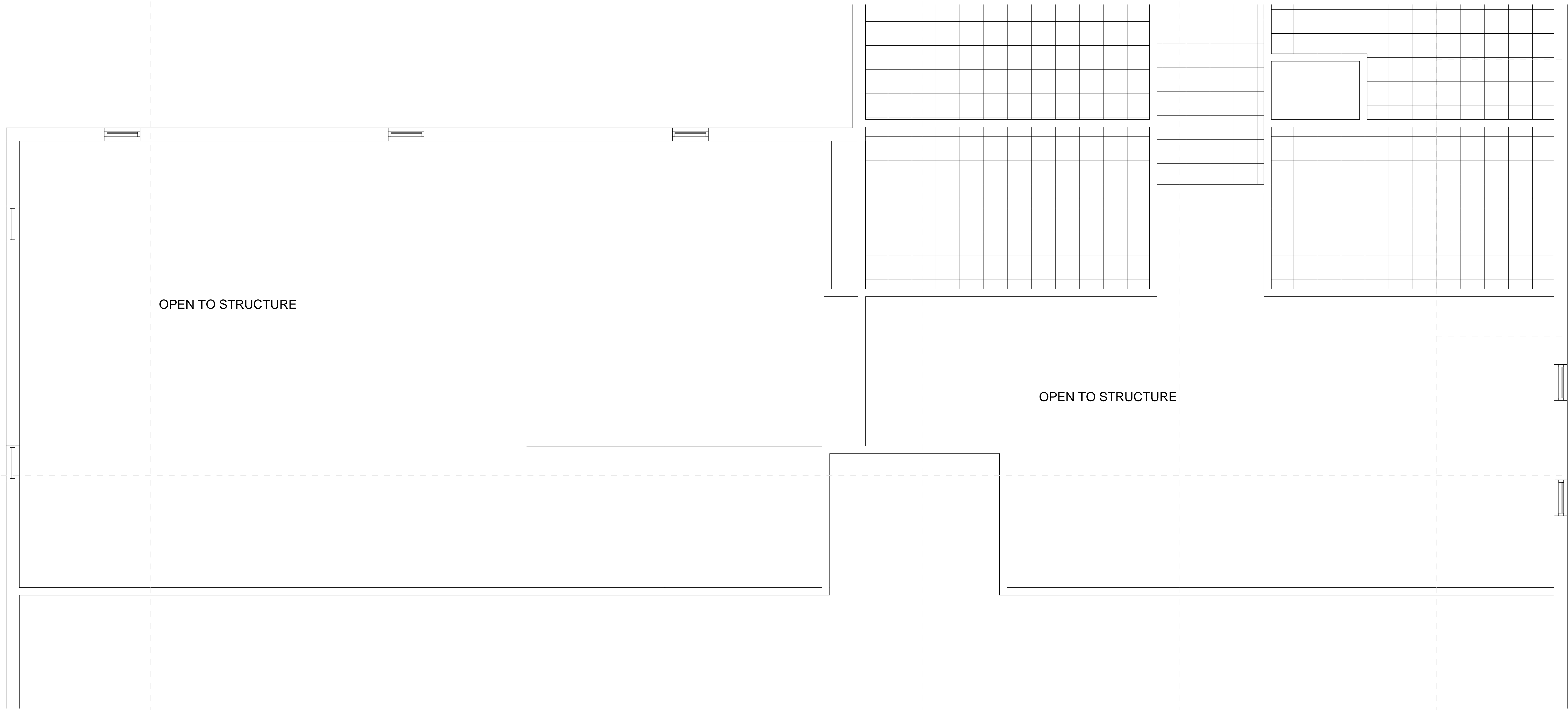
PCS High School Renovations
123 N Main St
Pontotoc, MS 38863

Schematic
Design

Project No	21064
Date	8/20/2021
Revisions	Rev Date

A042

RCP - Existing



1 PCS HS Band Unfinished Space - Existing
1/4" = 1'-0"

Not For Construction

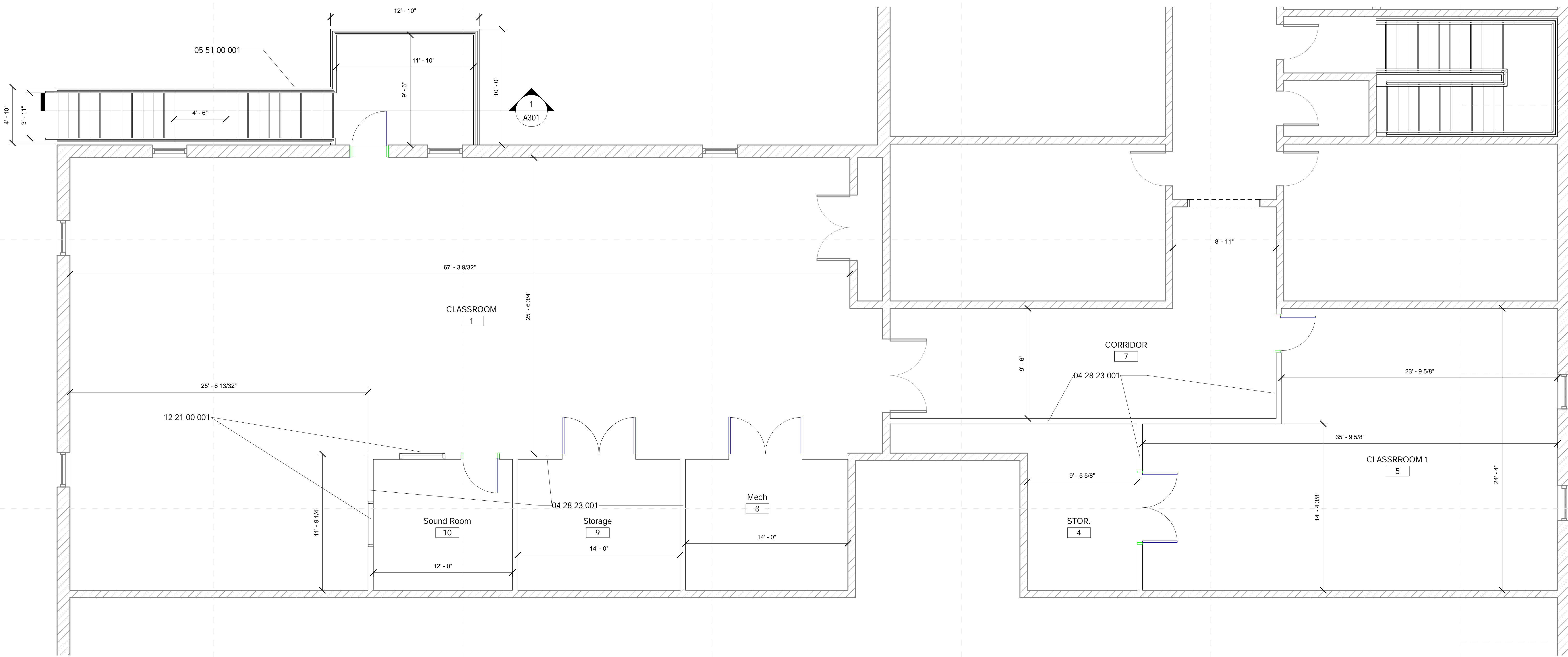
PCS High School Renovations
123 N Main St
Pontotoc, MS 38863

Schematic Design

Project No	21064
Date	8/20/2021
Revisions	Rev Date

A101

Floor Plan



1 PCS HS Band Unfinished Space - New Construction
1/4" = 1'-0"

Specific Notes

- 04 28 23 001 6" CMU Wall; Set plumb/level/flush with mortar to minimum of 2" above ceiling
- 05 51 00 001 Prefabricated Metal Stair with concrete toppers
- 12 21 00 001 Install new privacy blinds here

Architects

One Jackson Place 250
188 East Capitol Street
Jackson, MS 39201
p 601.352.5411

201 Park Court Suite B
Ridgeland, MS 39157
p 601.790.9432

161 Lameuse St. Suite 201
Biloxi, MS 39530
p 228.374.1409

dalebaileyplans.com

**Not For
Construction**

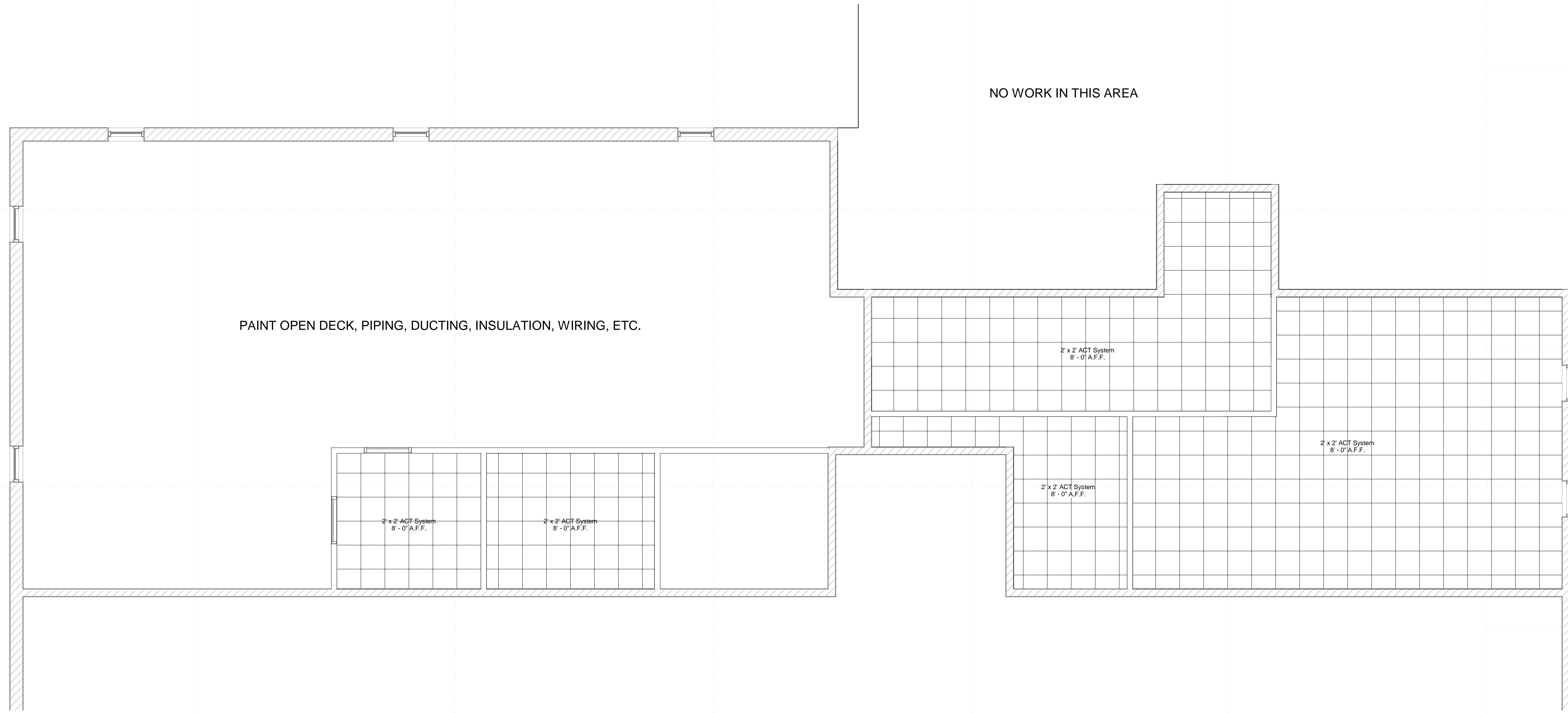
PCS High School Renovations
123 N Main St
Pontotoc, MS 38863

Schematic
Design

Project No	21064
Date	8/20/2021
Revisions	Rev Date

A141

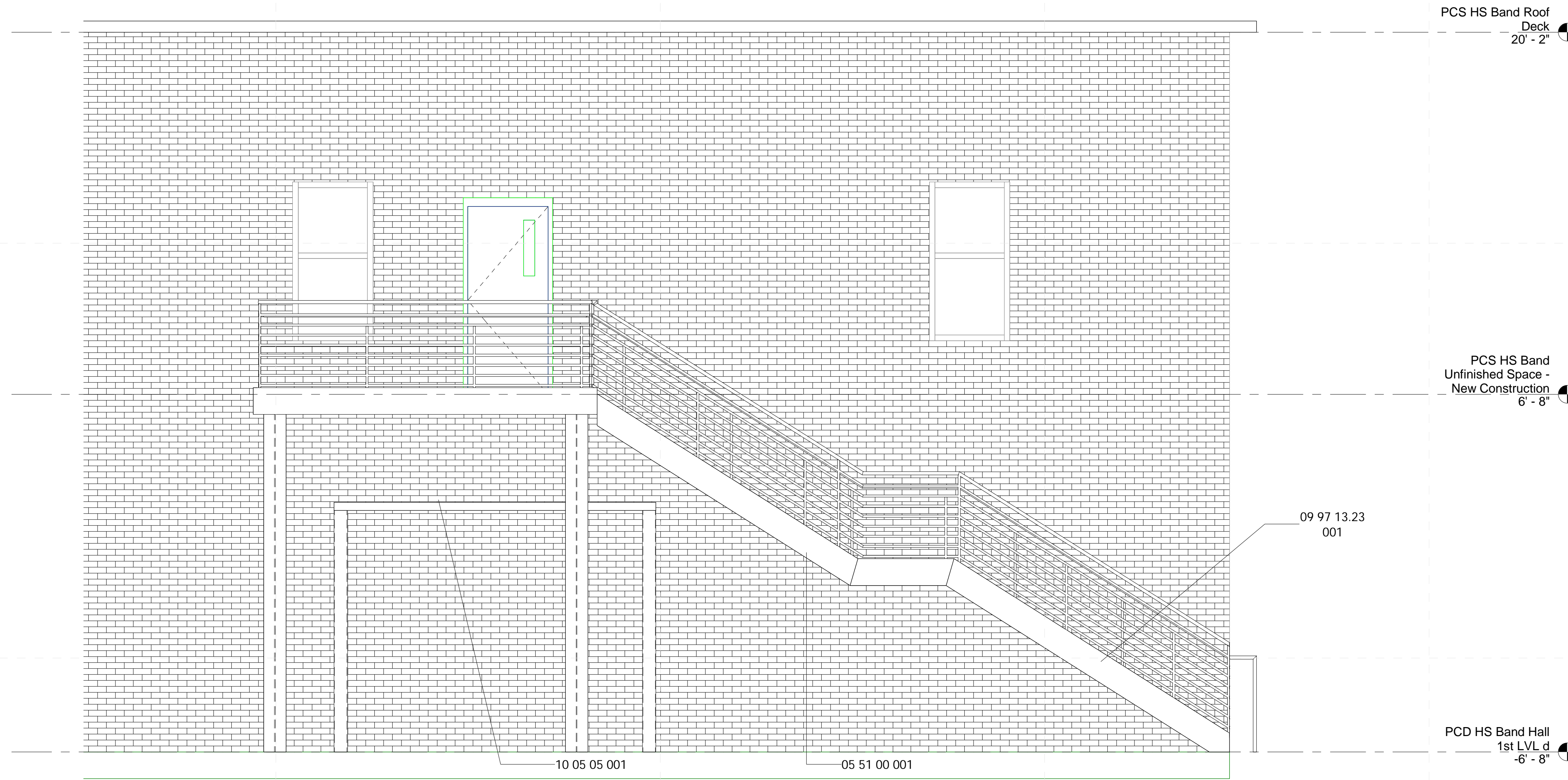
RCP - New Construction



1 PCS HS Band Unfinished Space - New Construction
1/4" = 1'-0"

General Ceiling Notes

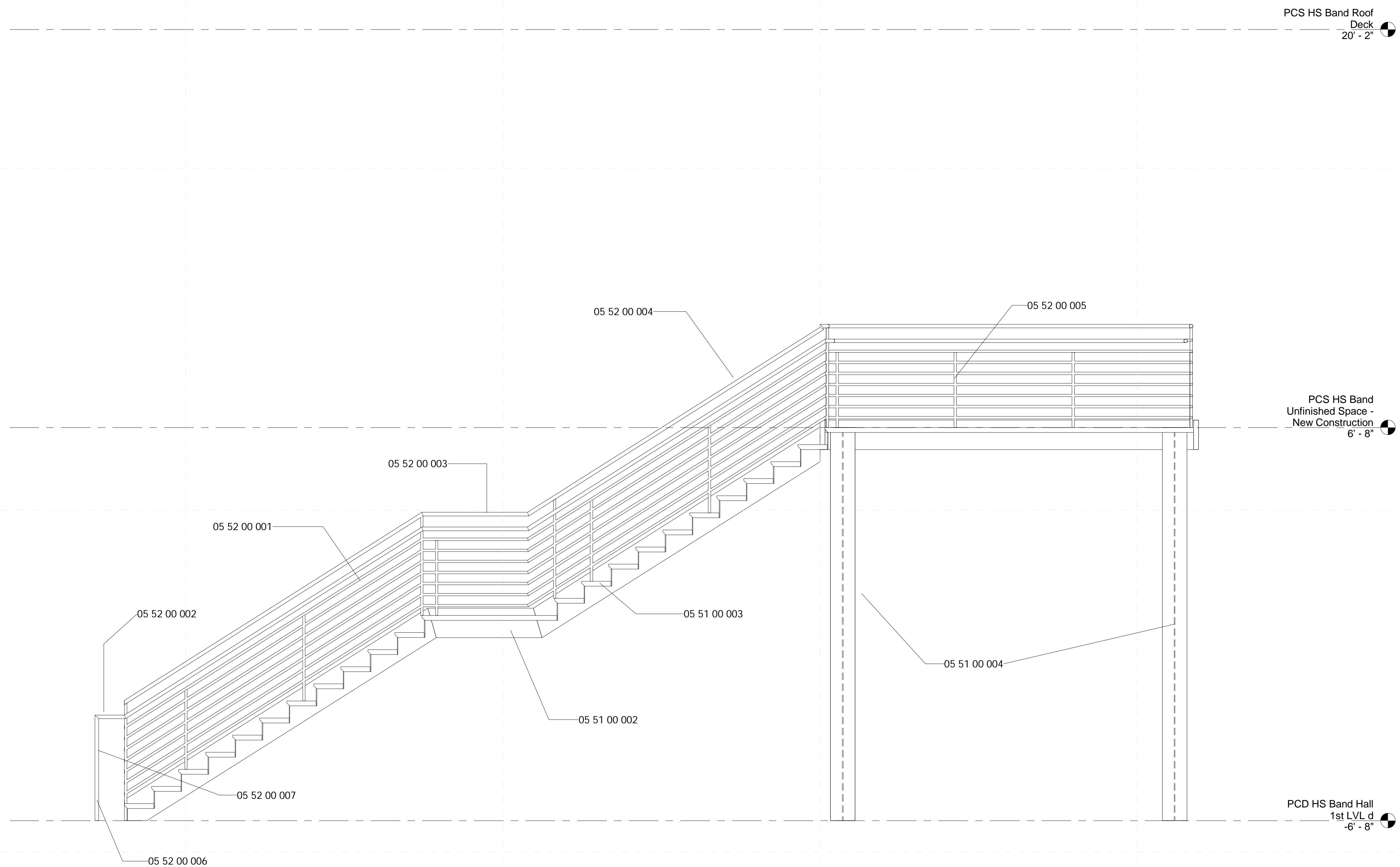
1. Install new 2x2 grid and tile wherever shown; new grid shall be level and flat unless noted otherwise.



1 STAIR WALL
3/8" = 1'-0"

Specific Notes

- 05 51 00 001 Prefabricated Metal Stair with concrete toppers
- 09 97 13.23 001 Finish all steel members with primer & enamel paint
- 10 05 05 001 Remove metal awning entirely; remove caulking and residues left by caulking; patch damages with like materials



1 Stair Section
1/2" = 1'-0"

General Stair Notes

1. Stair rise shall be greater than 4-1/2" and less than 7".
2. Stair run shall be 11" or greater.

Specific Notes

- 05 51 00 002 Welded Steel Stringers
- 05 51 00 003 Galvanized metal pan to receive concrete topping
- 05 51 00 004 Steel columns to make prefabricated stair free standing
- 05 52 00 001 Install horizontal square solid bar so that no 4" ball can pass thru at any point
- 05 52 00 002 Install round pipe with OD no greater than 2" or less than 1-1/4" for handrail @ a height of 36" above floor or center step
- 05 52 00 003 Install guard rail at a height of 42" to top of rail
- 05 52 00 004 Install square tube 2" as top of guard
- 05 52 00 005 Install 1" square tube vertical members at ends of runs, corners, and a minimum of every 4' throughout
- 05 52 00 006 Return Handrail to ground and secure
- 05 52 00 007 Extend handrail 12" passed the nosing of the last step