

**Not For
Construction**

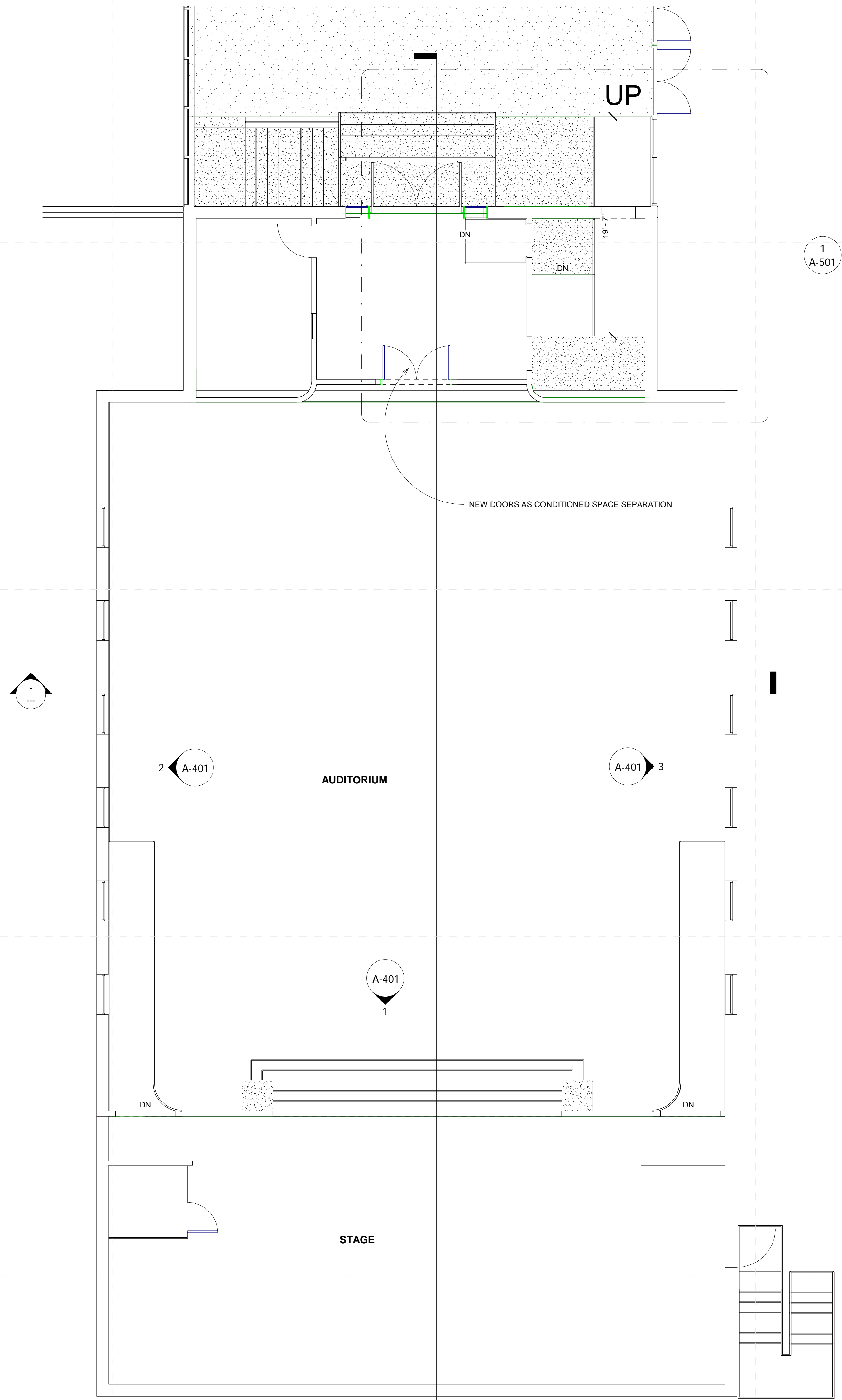
Pontotoc City School District

Schematic
Design

Project No	21064
Date	8/18/2021
Revisions	Rev Date

A-101

New Construction



1 PCS Middle - Auditorium - New Construction
3/16" = 1'-0"

8/30/2021 9:20:44 AM D:\my stuff\BUSINESS\work\2019\dale\partners\21064 - Pontotoc ESSRL\models\PCS Middle School.rvt

**Not For
Construction**

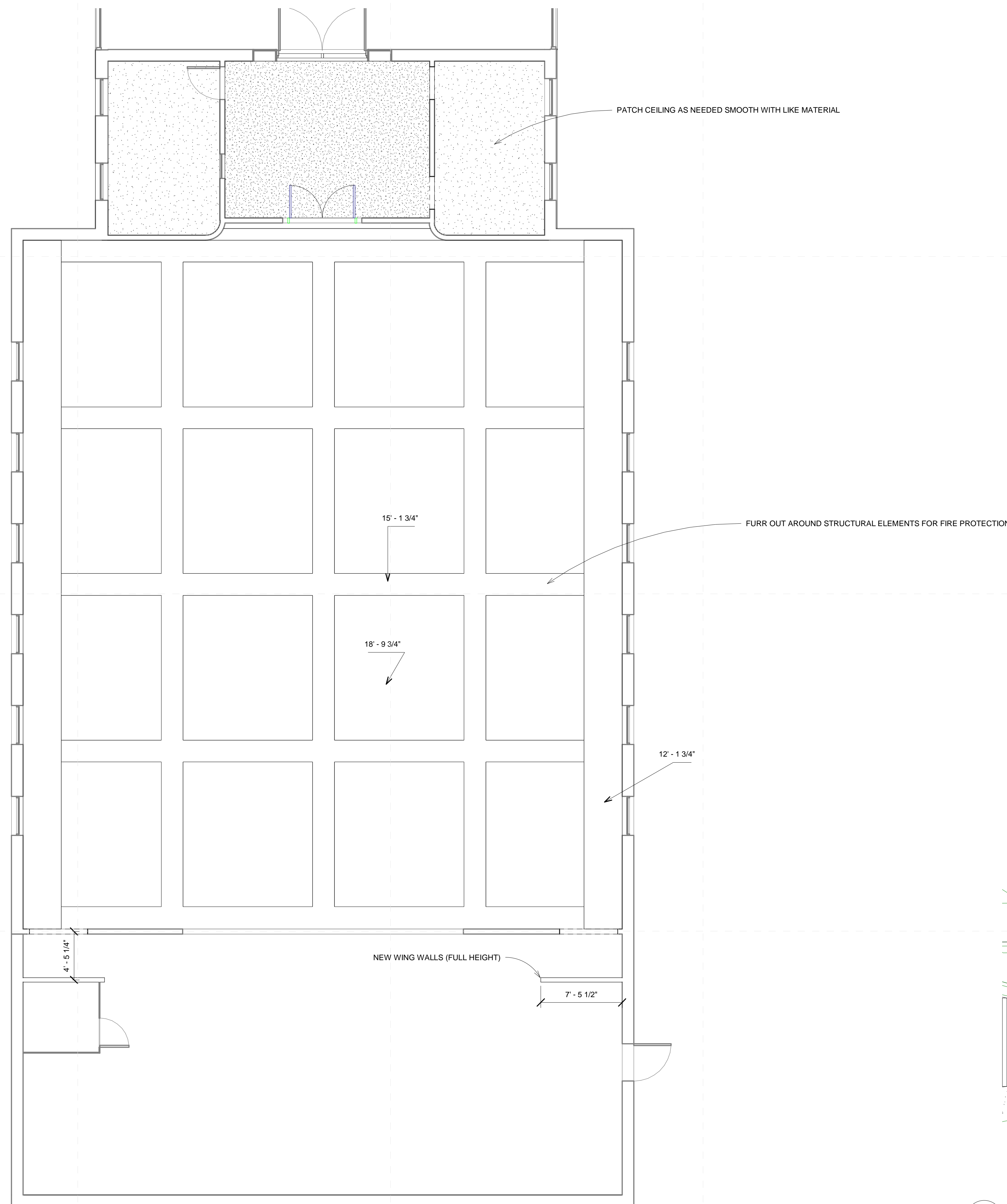
Pontotoc City School District

Schematic
Design

Project No 21064
Date 8/18/2021
Revisions Rev Date

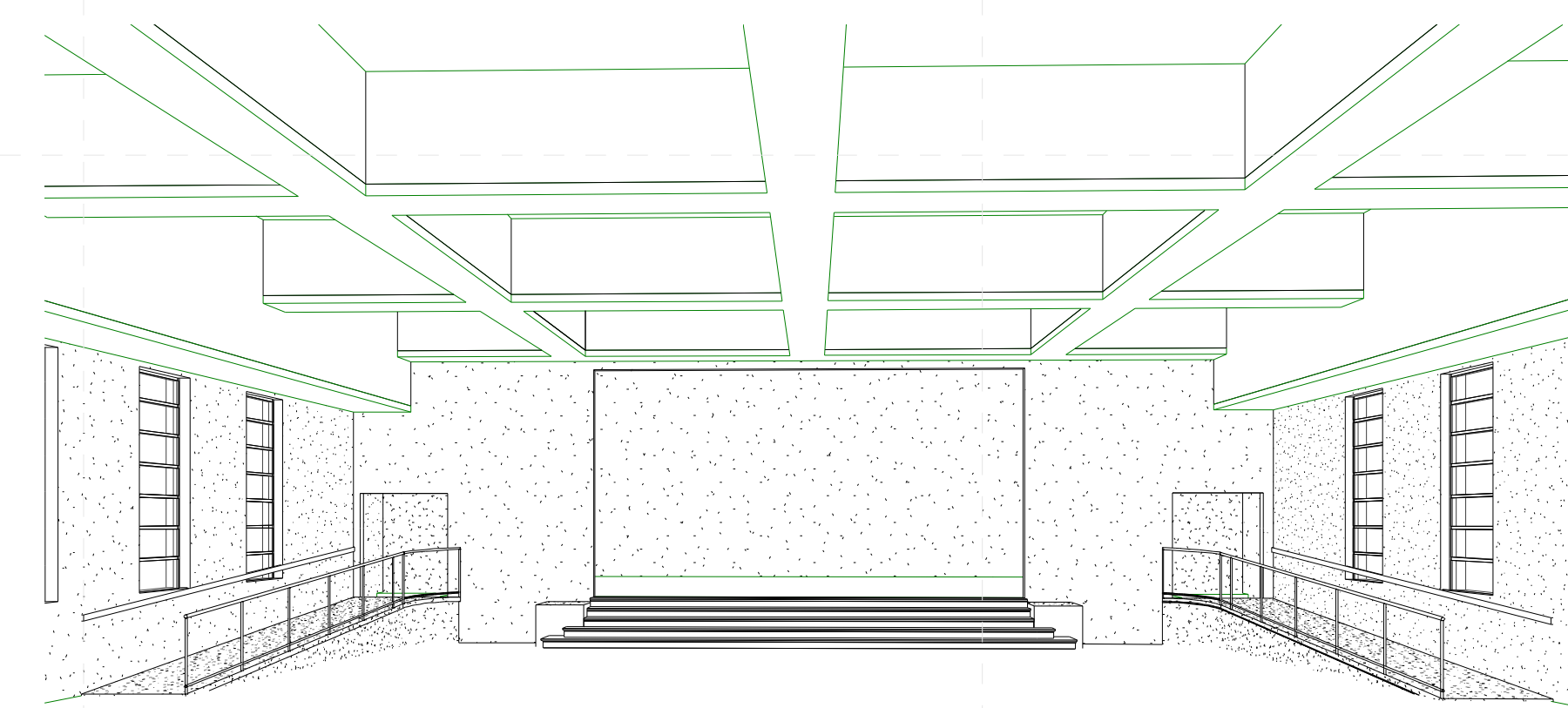
A-141

RCP - New Construction



Ceiling Legend

- Moisture Resistant Acoustical Lay In Ceiling
- Colored Acoustical Lay In Ceiling
- Vinyl Faced Acoustical Lay In Ceiling
- Composite Deck Underside (exposed)
- 2x4 Acoustical Lay In Ceiling (TO BE REMOVED)
- 2x2 Acoustical Lay In Ceiling (NEW)
- Painted 5/8" Type-X Fire Gypsum
- Concealed Fastener Painted Metal Soffit
- 2x4 Fluorescent Fixture
- Surface-Mounted Fluorescent Light Fixture
- Recessed Can Light Fixture
- HVAC Supply Grille
- HVAC Return Grille
- Exterior Wall Light
- Interior Wall Light
- Open to Structure (OTS)



2 Auditorium Entry

1 PCS Middle - Auditorium - New Construction
3/16" = 1'-0"

Architects

One Jackson Place 250
188 East Capitol Street
Jackson, MS 39201
p 601.352.5411

201 Park Court Suite B
Ridgeland, MS 39157
p 601.790.9432

161 Lameuse St. Suite 201
Biloxi, MS 39530
p 228.374.1409

dalebaileyplans.com

**Not For
Construction**

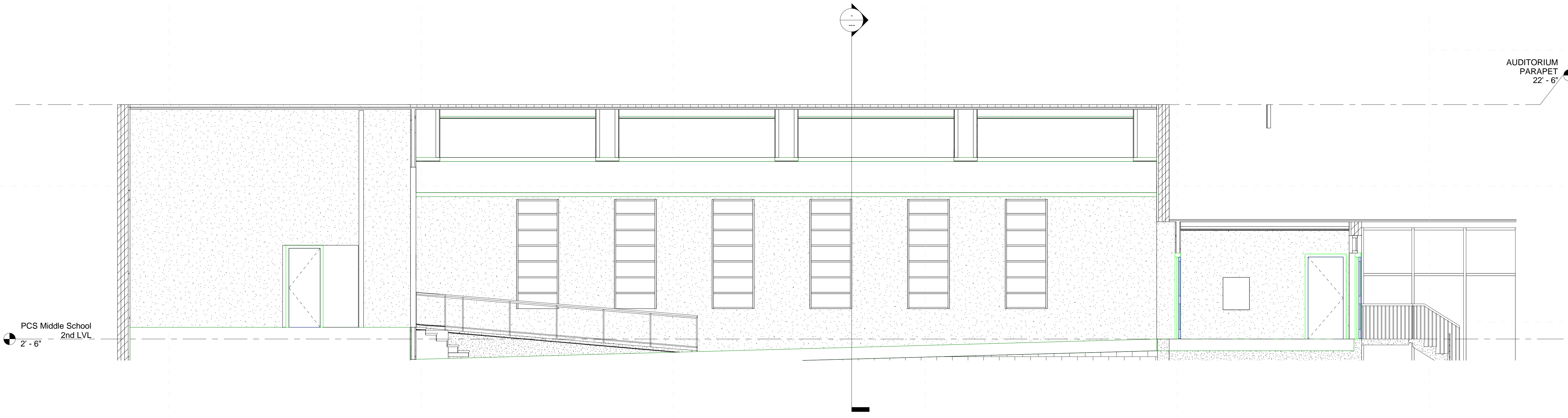
Pontotoc City School District

Schematic
Design

Project No	21064
Date	8/18/2021
Revisions	Rev Date

A-301

Building Section



1 BUILDING SECTION
1/4" = 1'-0"

8/30/2021 9:20:47 AM
D:\my stuff\BUSINESS\work\2019\dale\partners\21064 - Pontotoc ESSRL\models\PCS Middle School.rvt

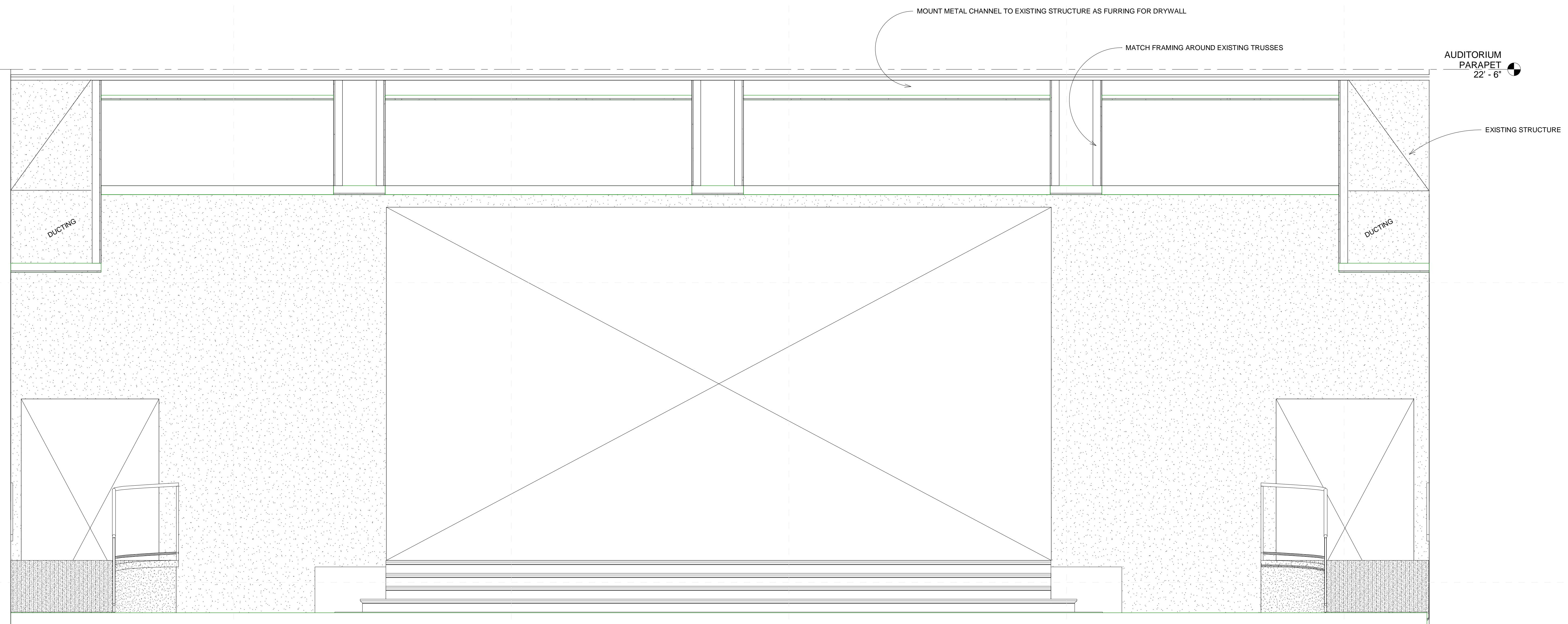
Not For Construction

Pontotoc City School District

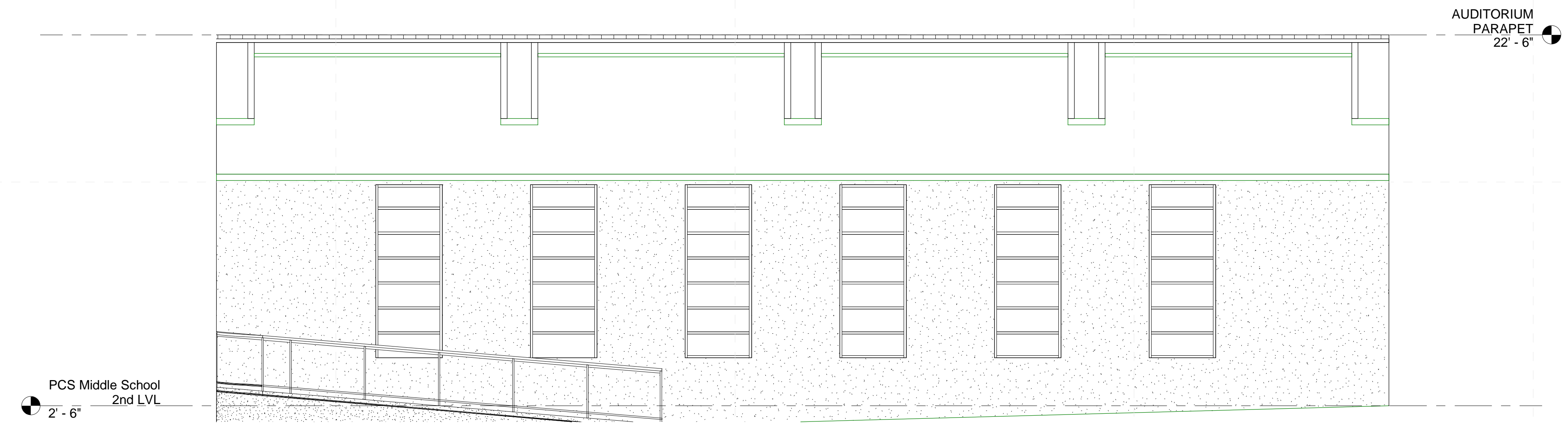
Schematic Design

Project No	21064
Date	8/18/2021
Revisions	Rev Date

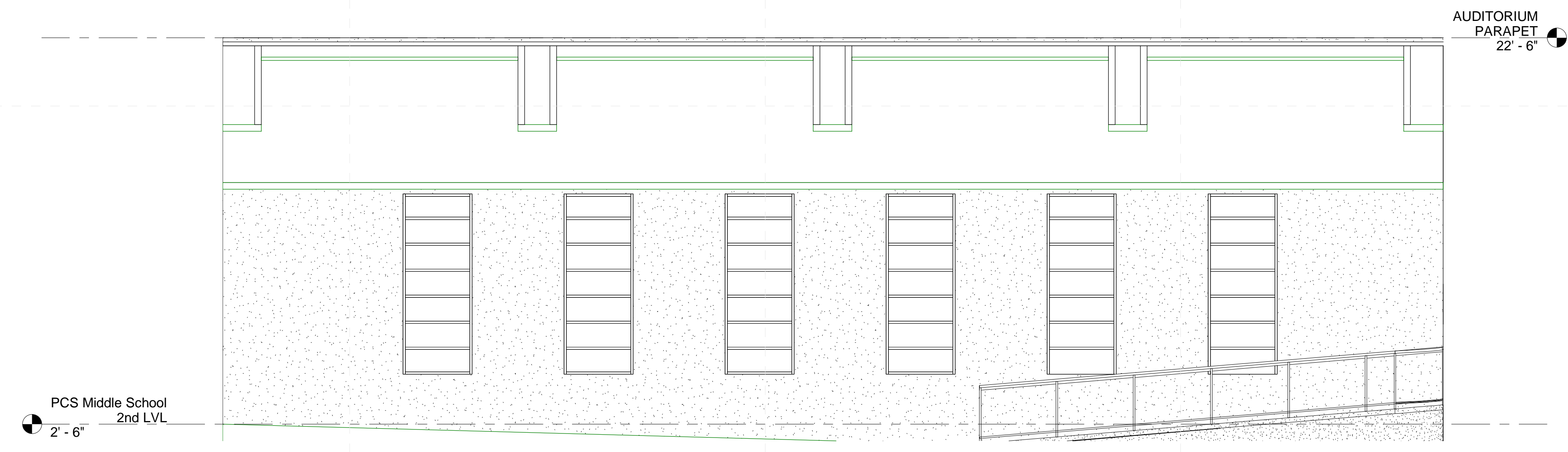
A-401
Interior Elevations



1 Stage Elevation
1/2" = 1'-0"



2 West Interior Wall
1/4" = 1'-0"



3 East Interior Wall
1/4" = 1'-0"

8/30/2021 9:20:48 AM D:\my stuff\BUSINESS\work\2019\dale\partners\21064 - Pontotoc ESSRL_model\PCS Middle School.rvt

**Not For
Construction**

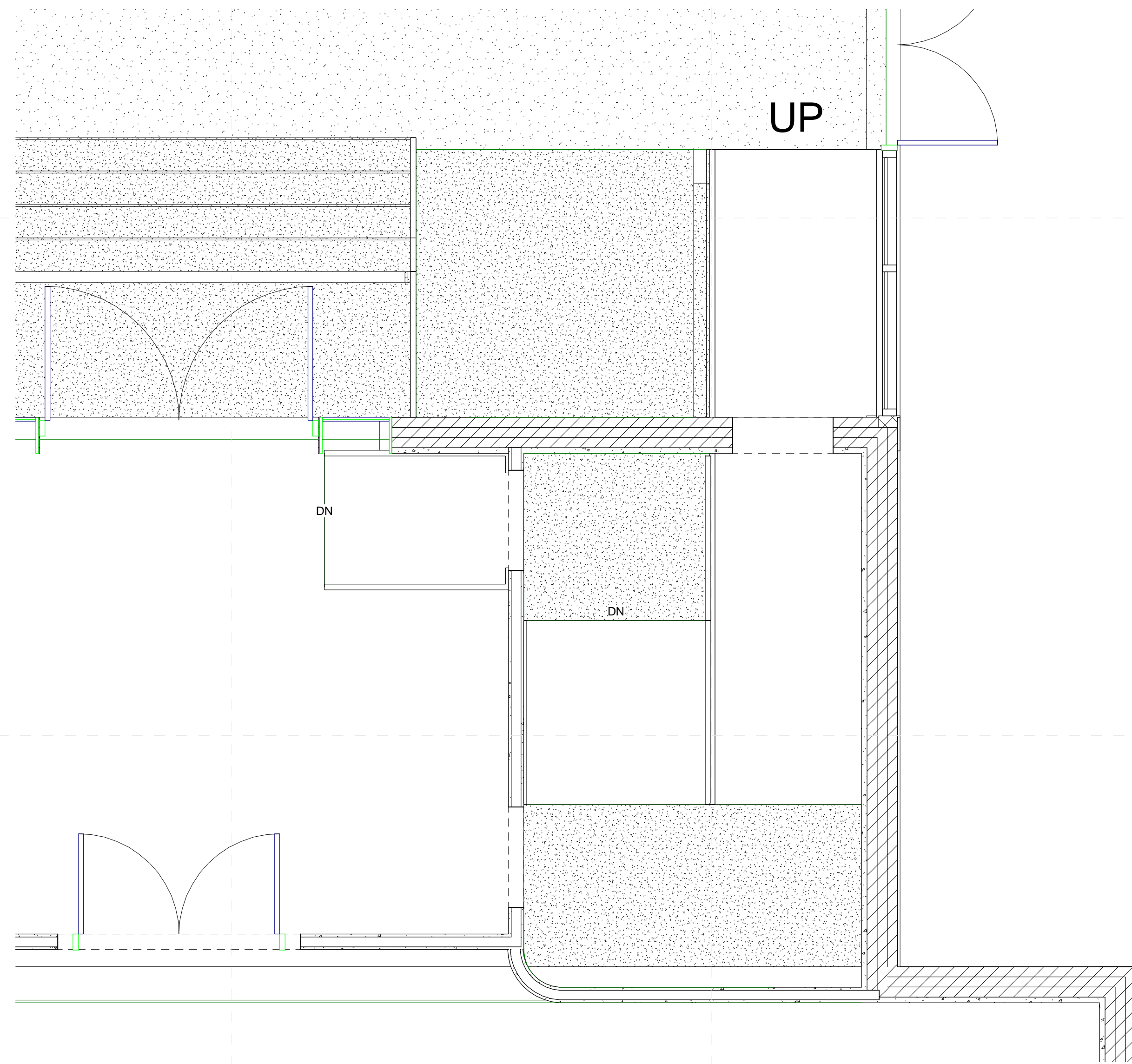
Pontotoc City School District

Schematic
Design

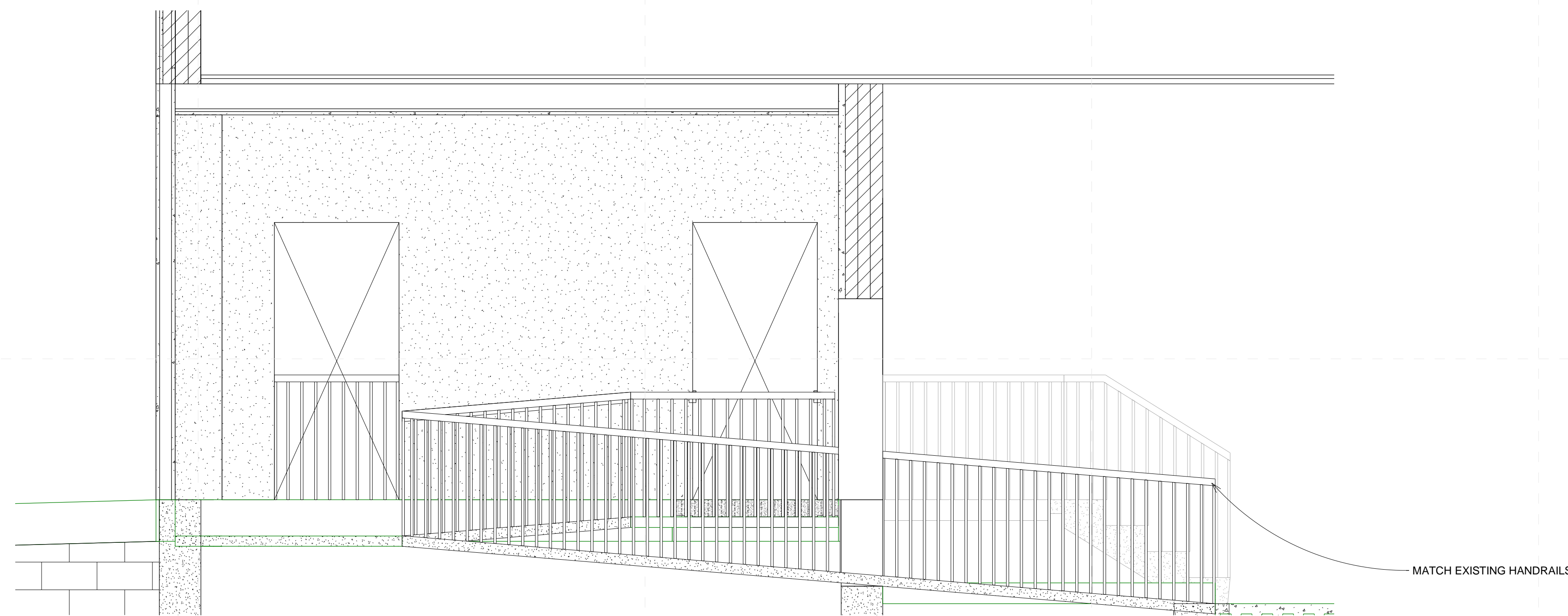
Project No	21064
Date	8/18/2021
Revisions	Rev Date

A-501

ADA Ramp Details



1 PCS Middle - ADA Ramp to Auditorium Lobby
3/8" = 1'-0"



2 Ramp Section
1/2" = 1'-0"

**Not For
Construction**

Pontotoc City School District

Schematic
Design

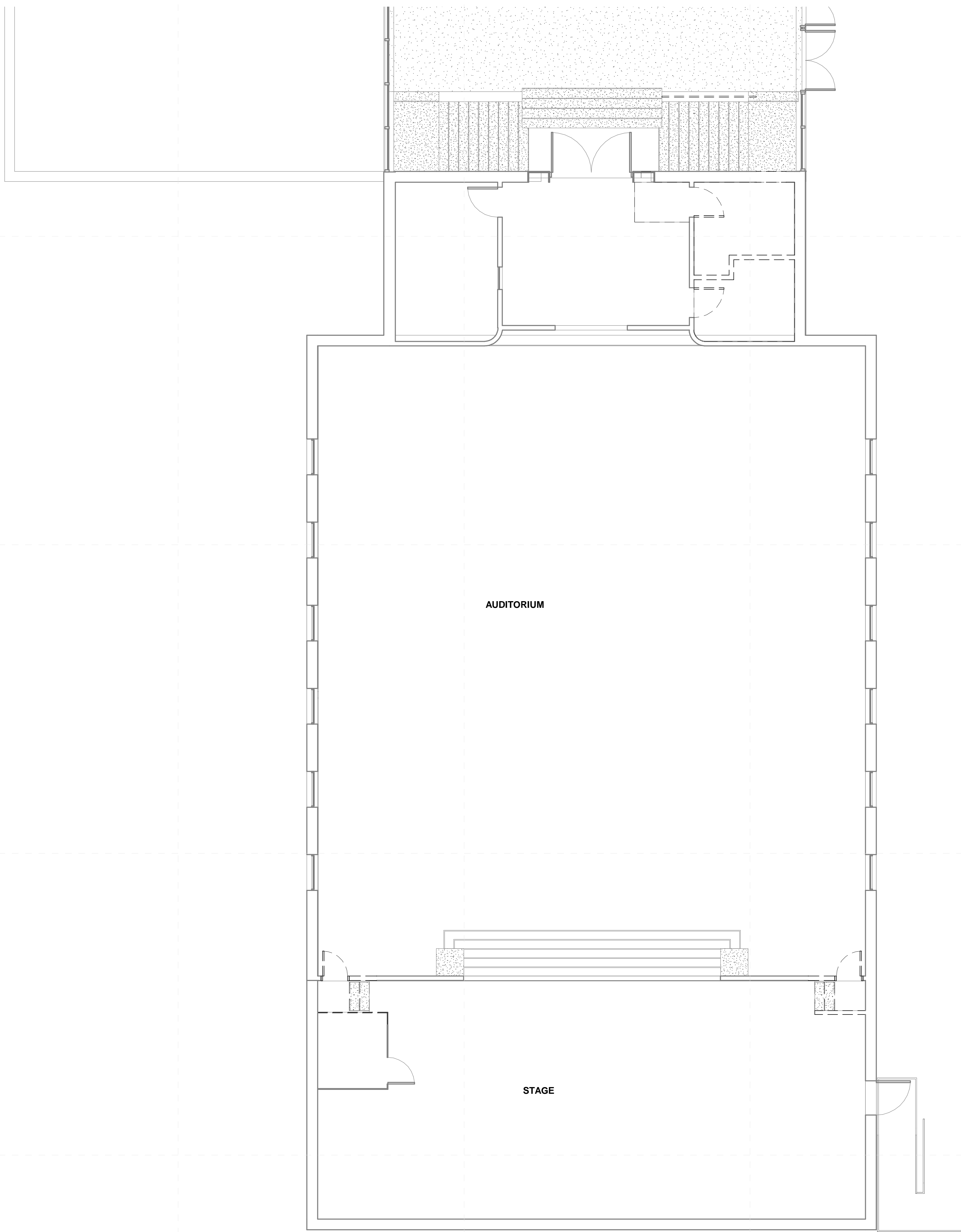
Project No 21064

Date 8/18/2021

Revisions Rev Date

AD-101

Demolition



1 PCS Middle - Auditorium - Existing

3/16" = 1'-0"

Architects

One Jackson Place 250
188 East Capitol Street
Jackson, MS 39201
p 601.352.5411

201 Park Court Suite B
Ridgeland, MS 39157
p 601.790.9432

161 Lameuse St. Suite 201
Biloxi, MS 39530
p 228.374.1409

dalebaileyplans.com

**Not For
Construction**

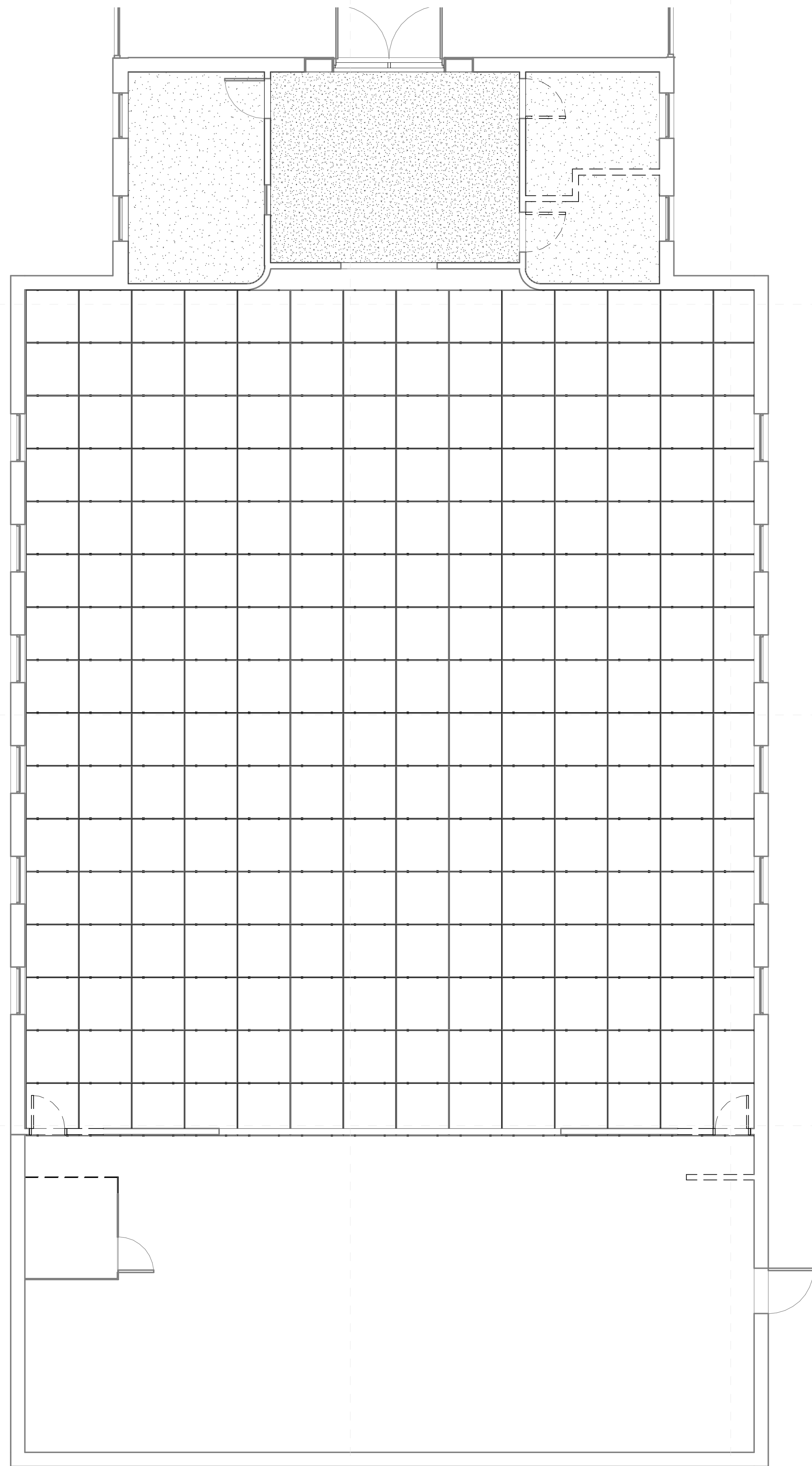
Pontotoc City School District

Schematic
Design

Project No	21064
Date	8/18/2021
Revisions	Rev Date

AD-141

RCP - Existing



1 PCS Middle - Auditorium - Existing
3/16" = 1'-0"