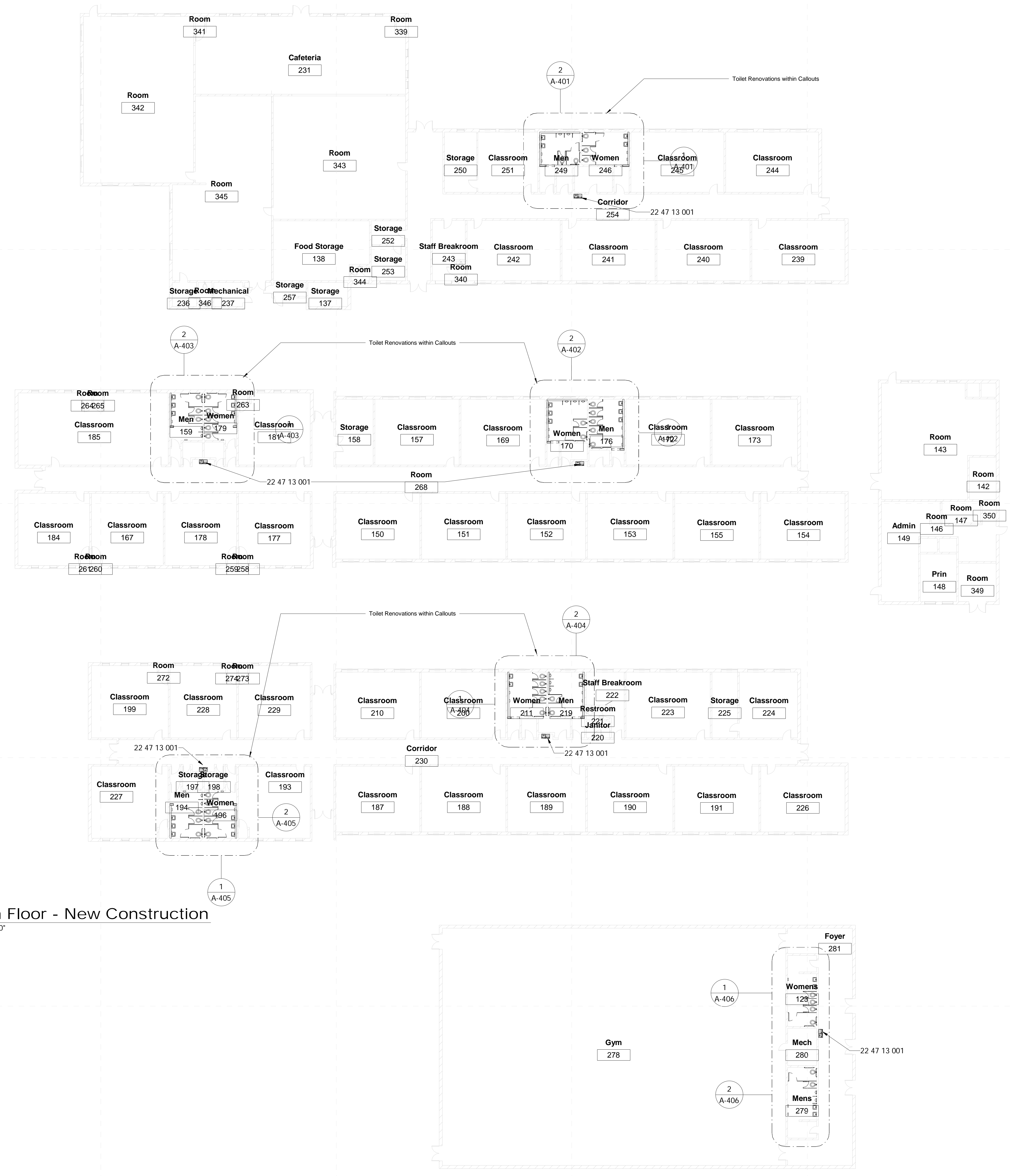
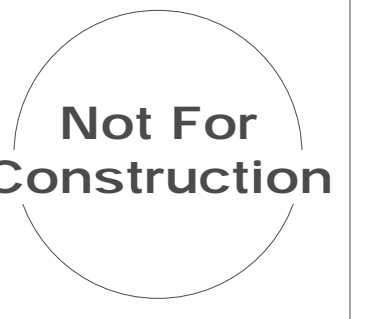


**Specific Notes**

22 47 13 001 Install double drinking fountain here; coordinate with mechanical & electrical drawings

**1** Floor Plan - New Construction  
1/16" = 1'-0"



**Specific Notes**

22 47 13 001 Install double drinking fountain here: coordinate with mechanical & electrical drawings

**1** Main Floor - New Construction  
1/16" = 1'-0"

**2** Main Floor - New Construction Gym  
1/16" = 1'-0"

**Sunflower Consolidated School District**  
Carver Elementary School: 404 Jefferson St. Indianola, MS 38751

Design  
Development

| Project No | 00000      |
|------------|------------|
| Date       | Issue Date |
| Revisions  | Rev Date   |
| 1          | 10/5/2021  |
| 2          | 11/26/2021 |

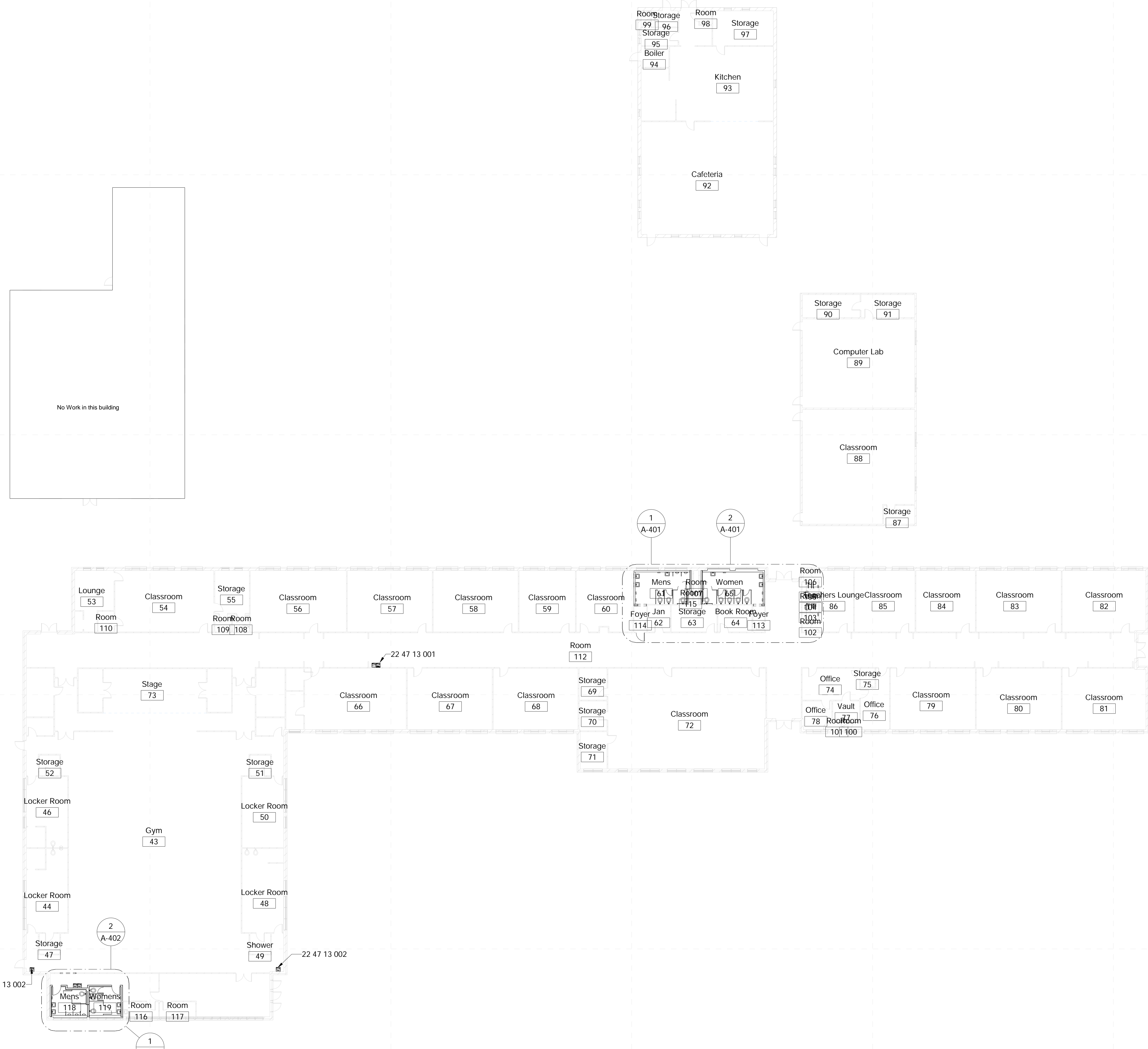


**Not For  
Construction**

**Sunflower Consolidated School District**  
Drew Hunter Middle School: 10 Swoope Rd, Drew, MS 38737

Design Development

| Project No | 005        |
|------------|------------|
| Date       | June 2021  |
| Revisions  | Rev Date   |
| 1          | 10/5/2021  |
| 2          | 11/26/2021 |



**1 Main Floor - New Construction**  
1/16" = 1'-0"

**Specific Notes**

22 47 13 001 Install double drinking fountain here: coordinate with mechanical & electrical drawings

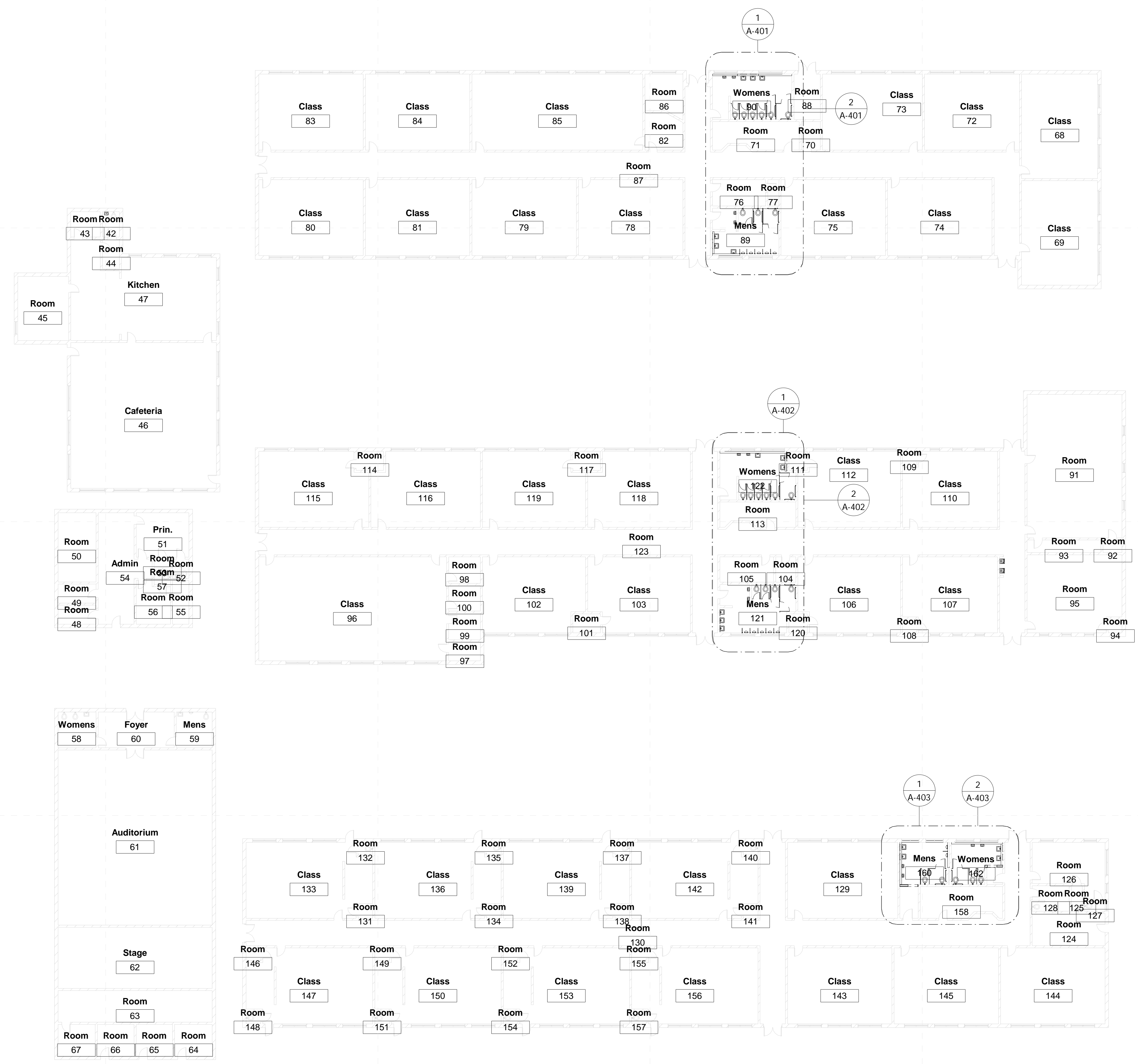
22 47 13 002 Install single drinking fountain here: coordinate with mechanical & electrical drawings

**Not For  
Construction**

**Sunflower Consolidated School District**  
Lockard Elementary School: 302 College Ave., Indianola, MS 38751

Design  
Development

|            |            |
|------------|------------|
| Project No | 00000      |
| Date       | Issue Date |
| Revisions  | Rev Date   |
| 1          | 10/5/2021  |
| 2          | 11/26/2021 |



**1 Main Floor - New Construction**  
1/16" = 1'-0"

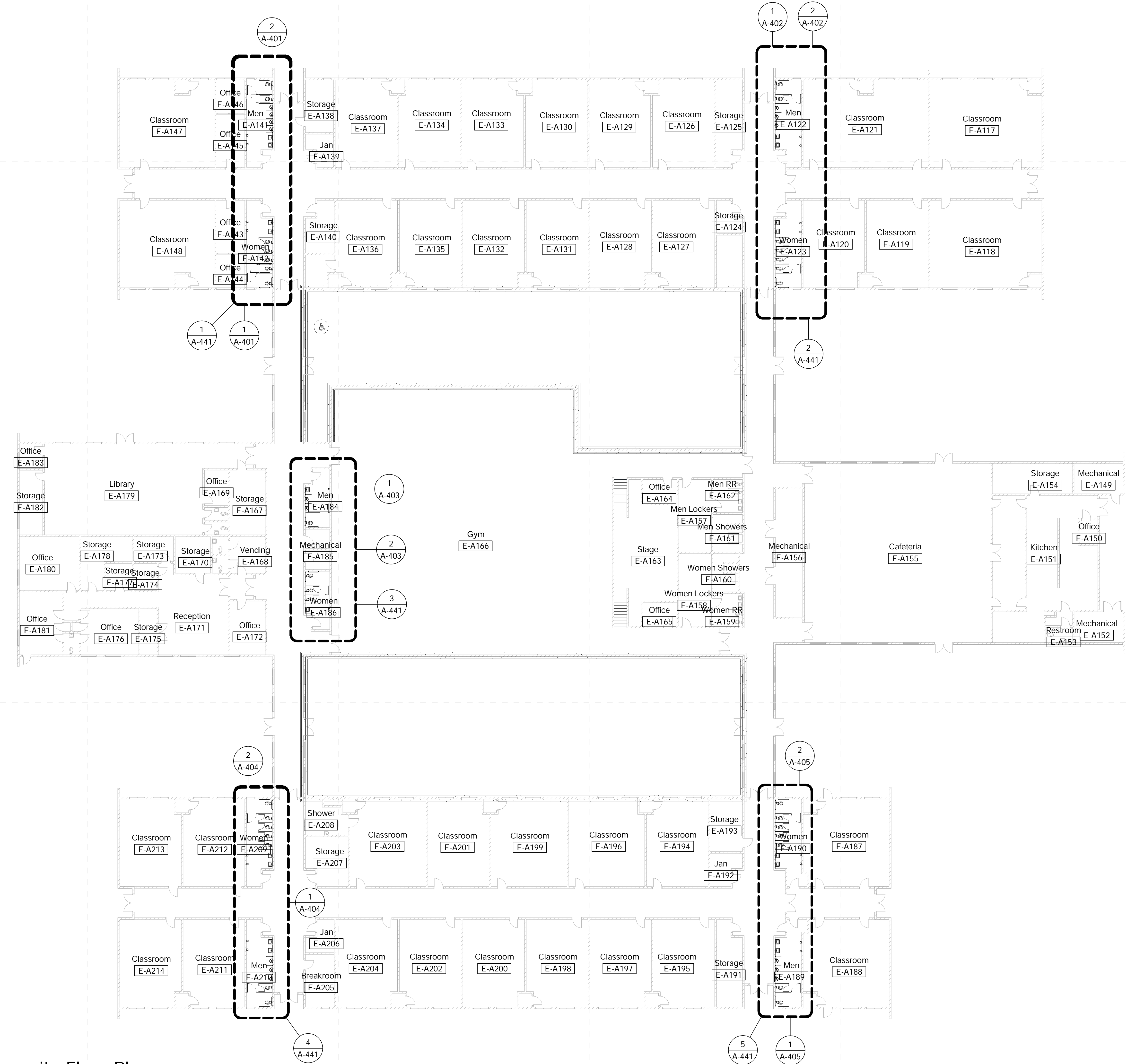


Not For  
Construction

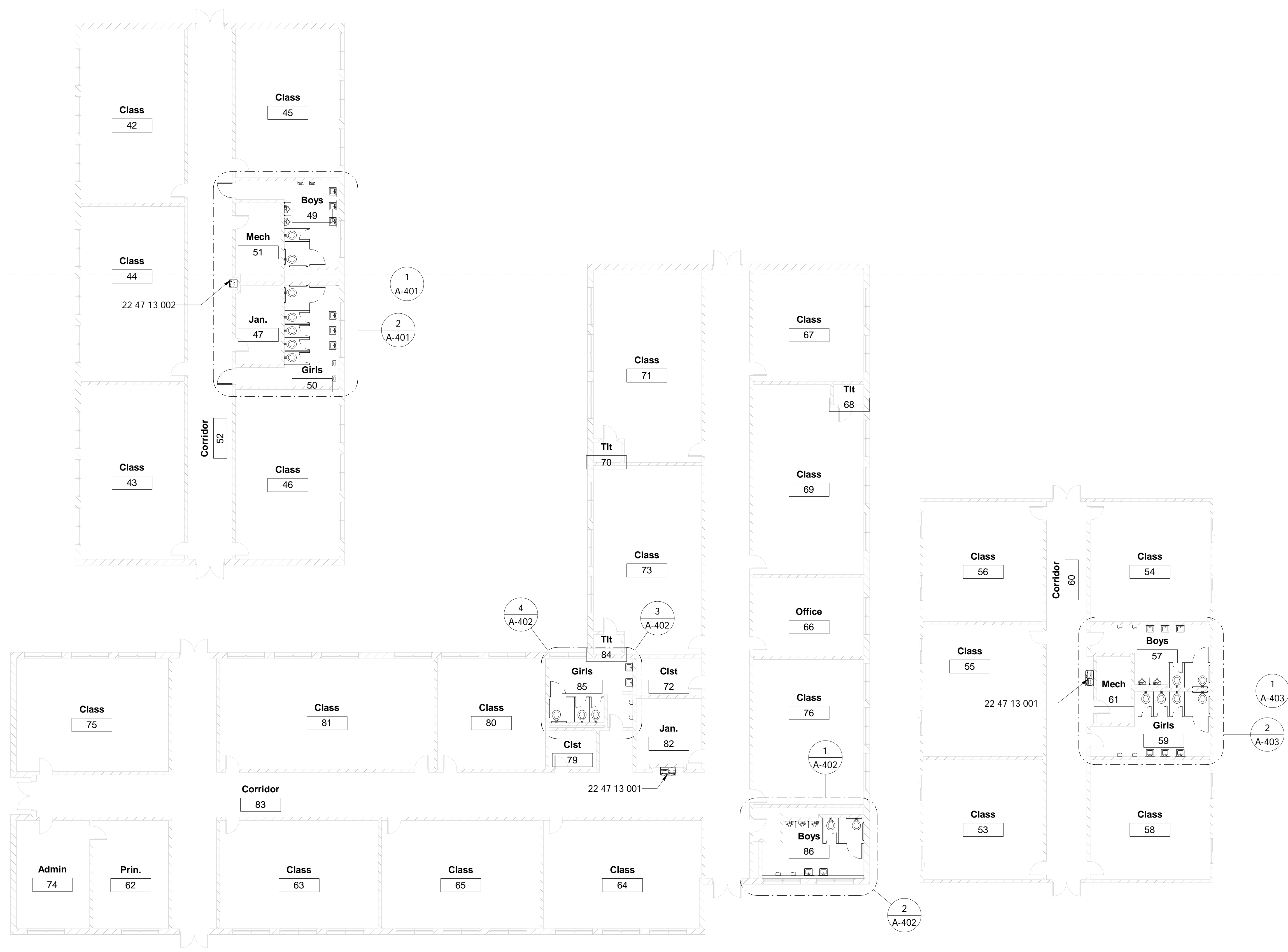
**Sunflower Consolidated School District**  
Merritt Middle School: 705 Kinlock Rd, Indianola, MS 38751

Design  
Development

|            |                |
|------------|----------------|
| Project No | 21027          |
| Date       | 3 January 2018 |
| Revisions  | Rev Date       |
| 1          | 10/5/2021      |
| 2          | 11/26/2021     |

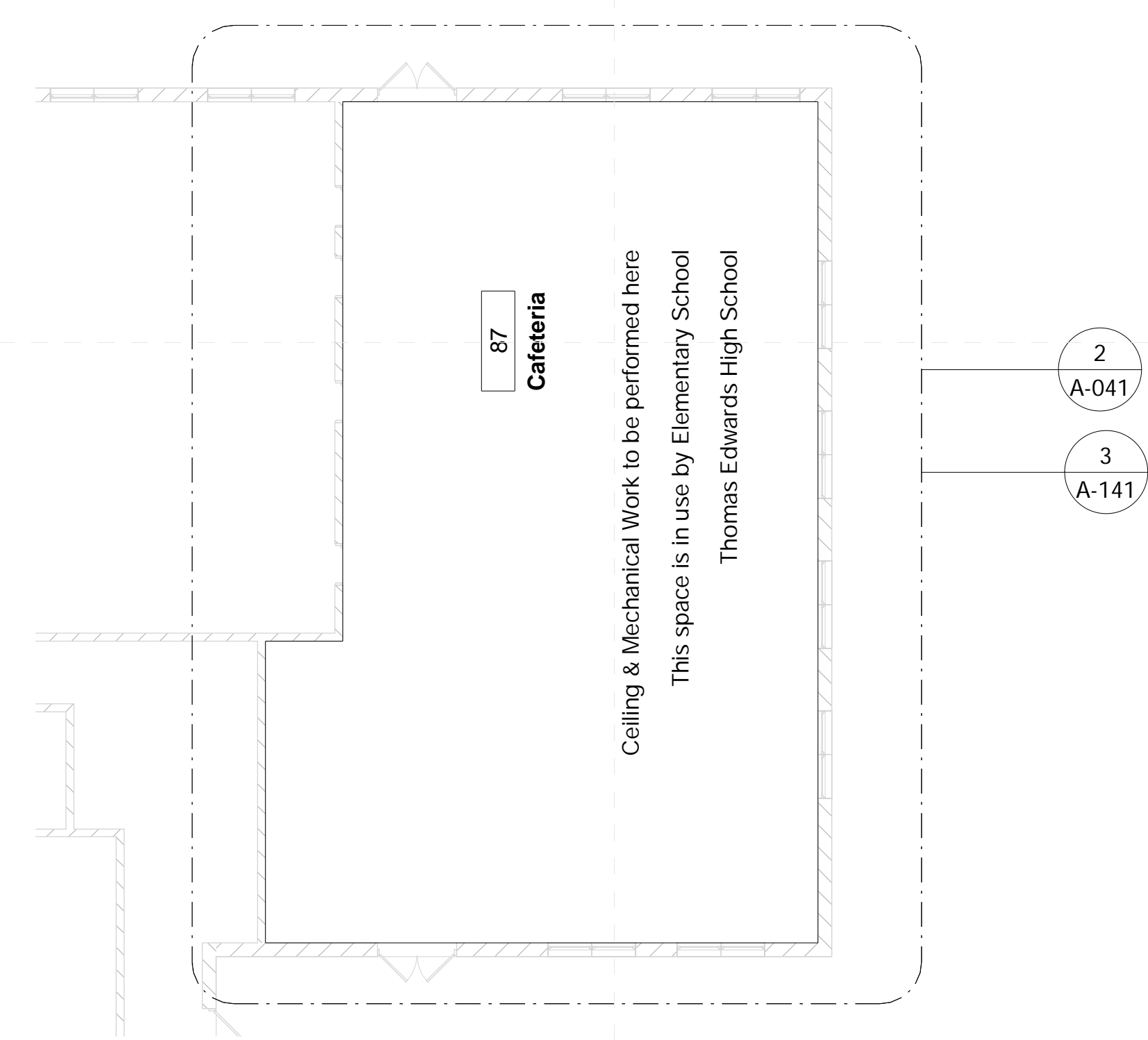


**1 Composite Floor Plan**  
1/16" = 1'-0"

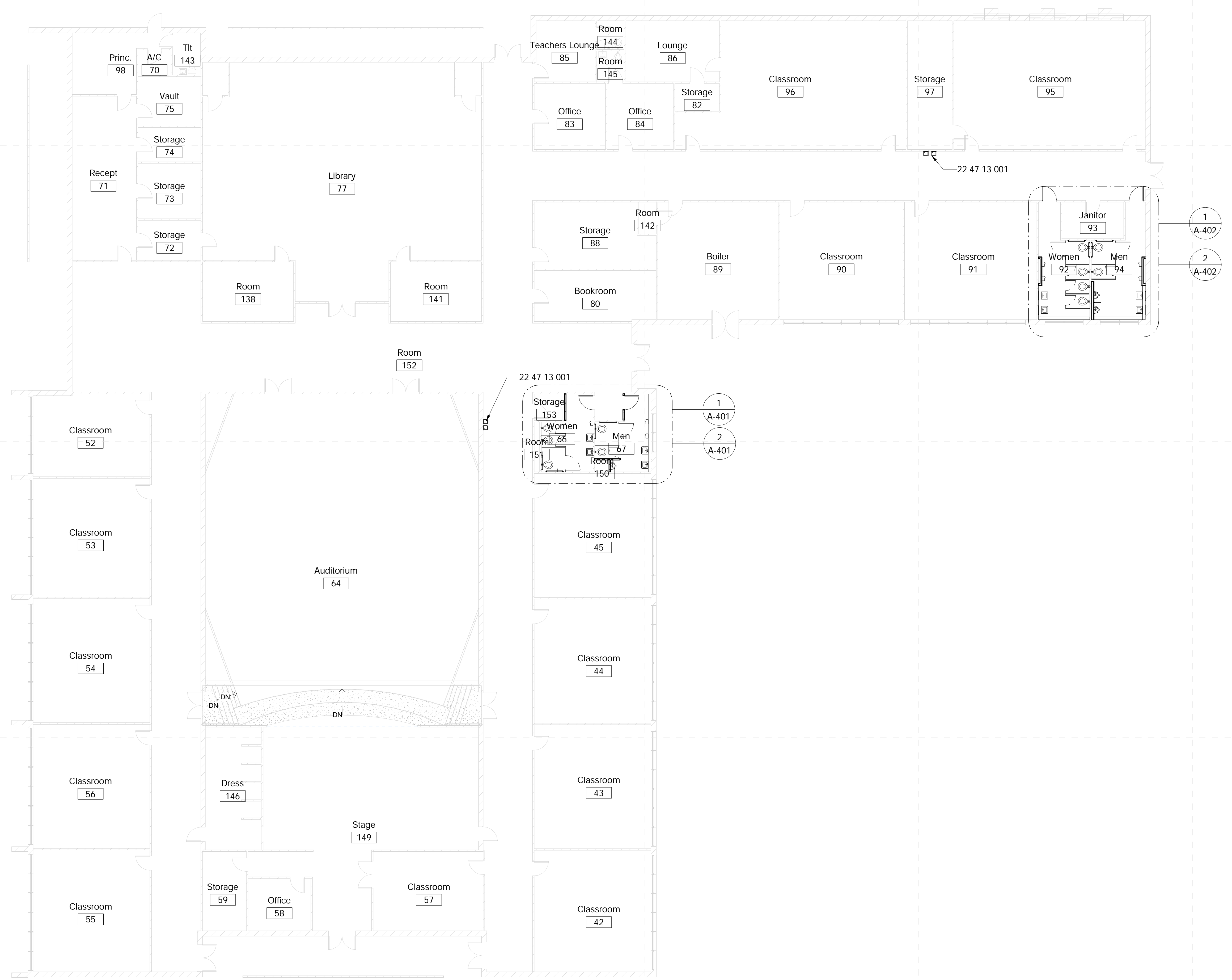


- Specific Notes**
- 22 47 13 001 Install double drinking fountain here; coordinate with mechanical & electrical drawings
  - 22 47 13 002 Install single drinking fountain here; coordinate with mechanical & electrical drawings

**2 Composite Floor Plan**  
3/32" = 1'-0"







**Specific Notes**

22 47 13 001 Install double drinking fountain here; coordinate with mechanical & electrical drawings

**1 Ruleville Middle Main Building - New Construction**  
3/32" = 1'-0"